

89

**U.S. PUBLIC LAND CORNER
MAINTENANCE**

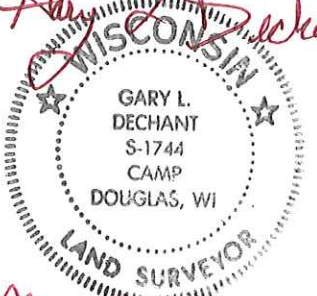
Corner ID : SE Sec. 20 T18N-R3W

21803200000

<u>DATE</u>	<u>CREW</u>	<u>MONUMENT TYPE -----</u>
November 16, 2016	Zachariah P.Dechant Gary L. Dechant	Existing Harrison, top broke off. Buried 3' due to landowner shooting range! Steel post 1' east, survey sign ½' west. 375' east of CTH "I". Existing ties gone.

References:

	<u>Bearing</u>	<u>Distance</u>
1) Set ¾"x24" hex iron bar, down 12" in field	N55E	24.03'
2) Set ¾"x24 hex iron bar, down 12" in field	S56E	24.13'
3) Set ¾"x24" hex iron bar, down 6", in lawn	S65W	26.64'
4) Set ¾"x24" hex iron bar, down 12" in field	N48W	22.43

Gary L. Dechant

November 29, 2016

See Reverse Side
For Maintenance

CERTIFICATE

I, Nicholas M. Hillmer, do hereby certify that this document and the data contained herein was prepared by me or under my direct supervision and that I am a duly Licensed Land Surveyor under the laws of the State of Wisconsin.

Dated this 21st day of May, 2013

Nicholas M. Hillmer, P.L.S. 2909
Anderson Engineering of Minnesota, LLC.

CERTIFIED LAND CORNER

History of corner established since Original Government Survey

In November of 1902 Fred Holden shows a stone at this corner. In November of 1957 Lenschow shows an iron pipe at the corner. Feddersen found an iron pipe at this corner in March of 1977 and December of 1982. In December of 1982 William Jung found the iron pipe and replaced it with a Harrison monument.

Description of evidence found

On January 23rd, 2013, Anderson Engineering of Minnesota located the Harrison monument with the top missing 2 feet below a mound of dirt and 0.4 foot west of a witness post with survey marker sign.

No. 89 P.2
21803200000



Description of corner and witness monuments, references and accessories used to perpetuate the original or re-established location of this corner:

Witnesses to corner location:

Nick Hillmer
Josh Oslund
Dan Greenwald

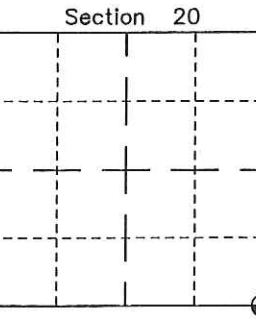
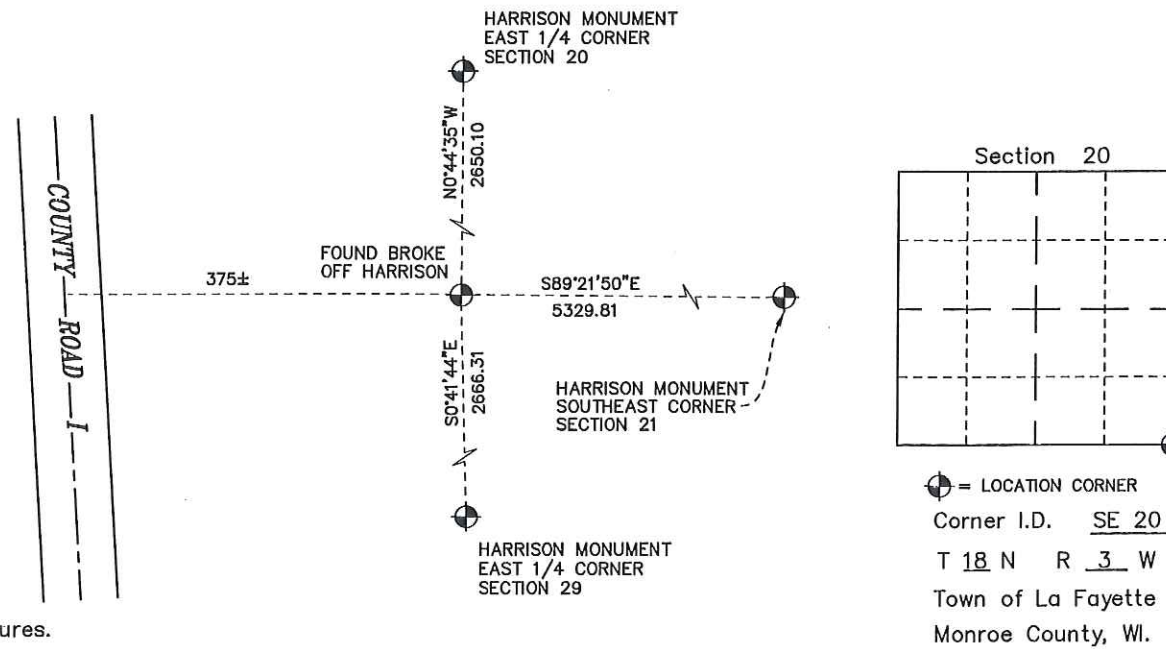
MONROE COUNTY
COORDINATE SYSTEM
NAD 1983 (2007)

HARRISON MONUMENT
Northing (Y) 405492.98
Easting (X) 641975.88

Base Station - 22 182W
Northing (Y) 408053.25
Easting (X) 679287.00



All distances are shown in U.S. Survey Feet.
Bearings are for tie reference purposes only.
Coordinates were derived from RTK GNSS procedures.



⊕ = LOCATION CORNER
Corner I.D. SE 20
T 18 N R 3 W
Town of La Fayette
Monroe County, WI.

I, William C. Jung, do hereby certify that on the 22nd day of December 19 82, I found (evidence) ~~no evidence~~ of the Northeast corner of Section 29, T 18 N, R 3 W Fourth Principal Meridian, and I re-established said corner according to the Wisconsin Statutes as shown and described hereon.

Dated this 27th day of Jan. 19 83.

William C. Jung

Deputy County Surveyor
Title

History of corner establishment since Original Government Survey

In November of 1902 Holden shows a stone at this corner. In November of 1957 Lenschow shows an iron pipe at this corner. Feddersen found an iron pipe at this corner in March of 1977 and in December of 1982.

Description of corner evidence found:

I did not find a stone, but I did find an iron pipe near the occupied corner. I removed the pipe and replaced it with a Harrison marker.

Approved: **HARLEY A. SIME**
MONROE CO. SURVEYOR

**See Reverse Side
For Maintenance**

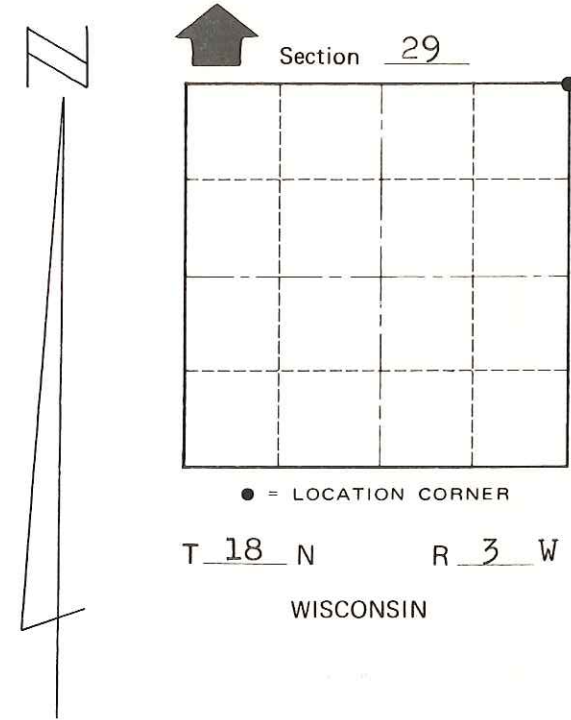
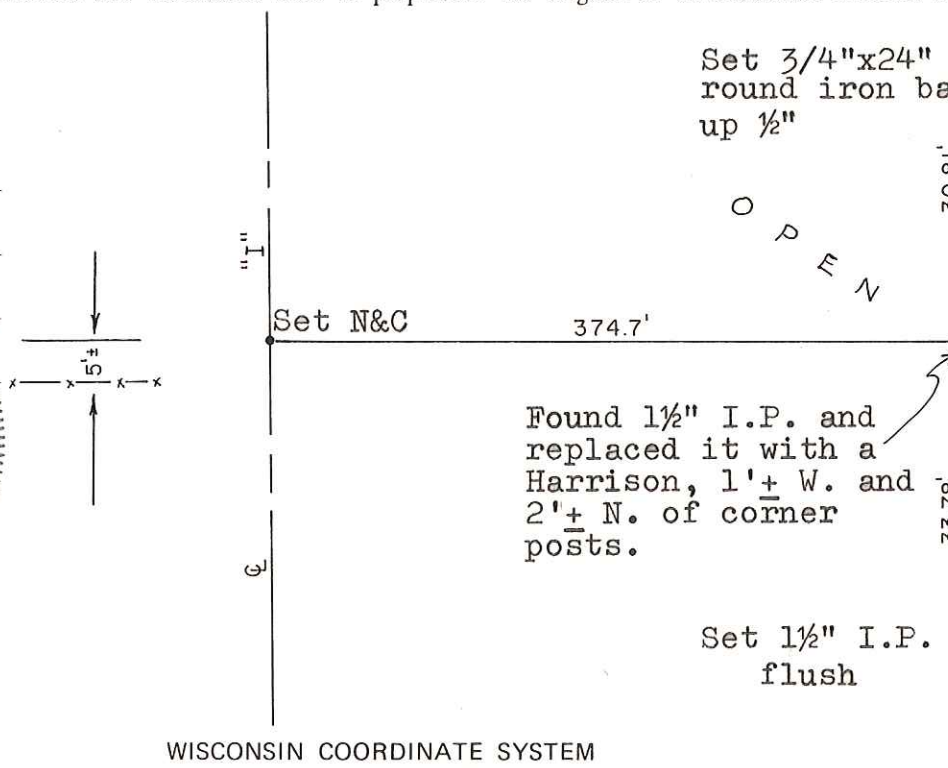
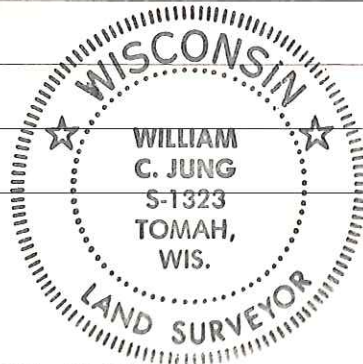
COUNTY SURVEYOR FORM NO. 1

Description of corner and witness monuments, references and accessories used to perpetuate the original or re-established location of this corner:

Witnesses to corner location:

William Jung

Bryan Meyer



SURVEY CONTROL ORDER

Horizontal	_____
Vertical	_____

WISCONSIN COORDINATE SYSTEM

Corner	East (X)	North (Y)	Elevation (Z)	Zone
Control Sta. Name				

~~City, Village or~~ Town of LaFayette
County of Monroe