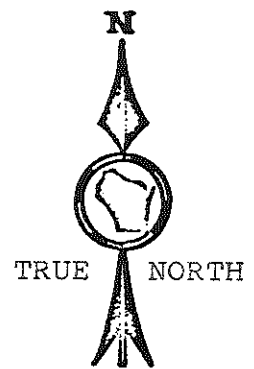
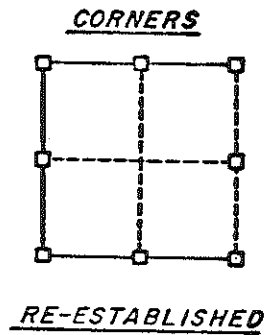


Existing axle with gear on top



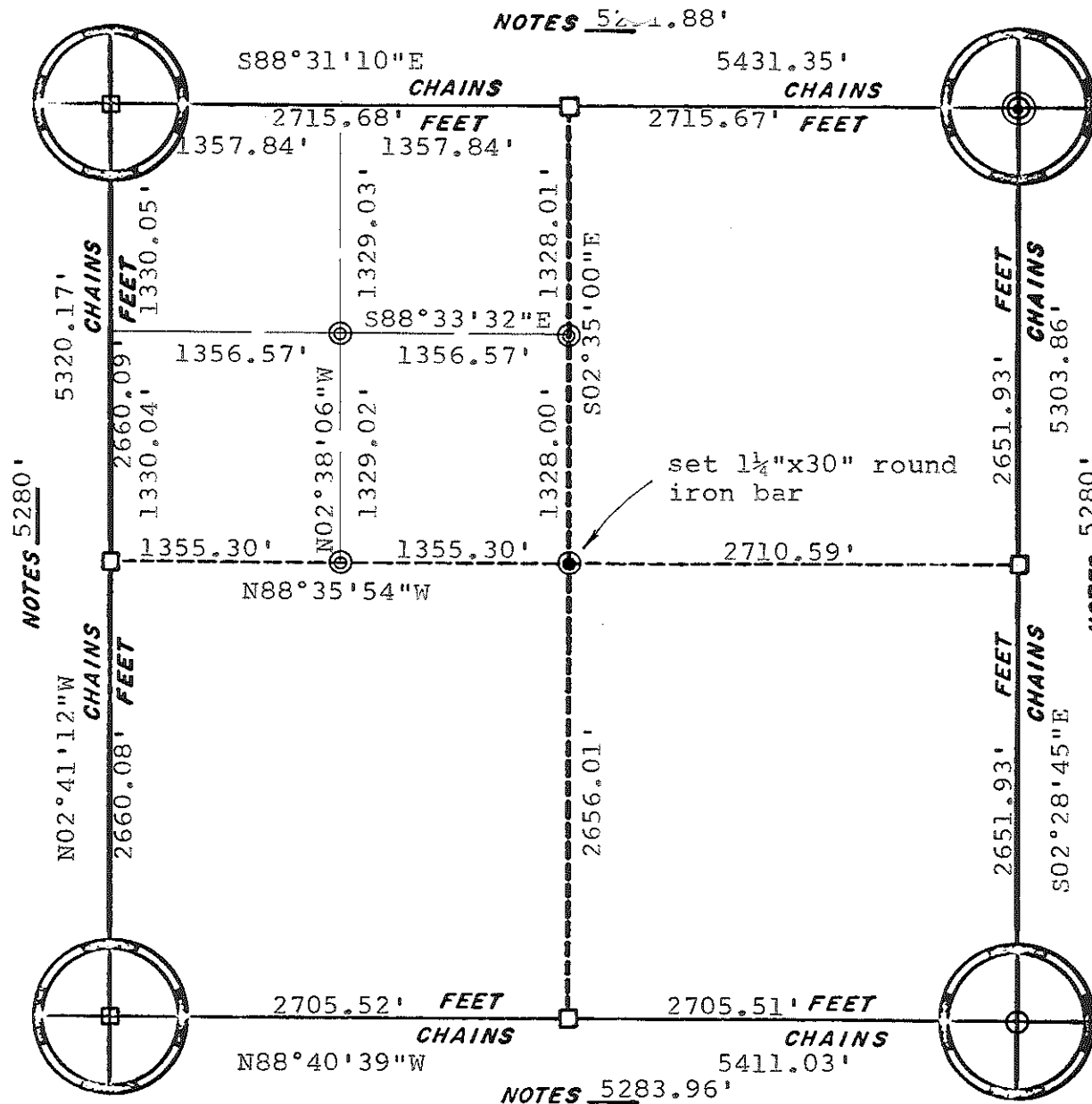
■ = set Harrison monument



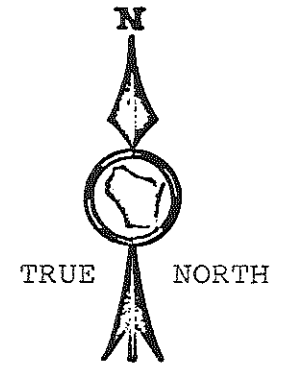
ORIGINAL SURVEY DATA

BY \_\_\_\_\_  
DATE 12, Sept., 1978

SURVEYED BY L.A. Feddersen	CONTRACT DATE March, 1977	COUNTY MONROE [REDACTED]	TOWN-VILLAGE-CITY LAFAYETTE	SECTION 8	TOWNSHIP 18N	RANGE 3W
-------------------------------	------------------------------	-----------------------------	--------------------------------	--------------	-----------------	-------------

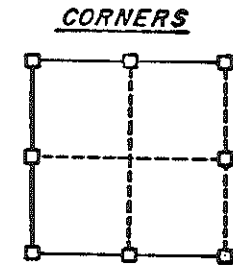


existing 1" iron pipe & stone on side



□ = set Harrison monument

⊙ = set 1-3/16" x 30" round iron bar



RE-ESTABLISHED

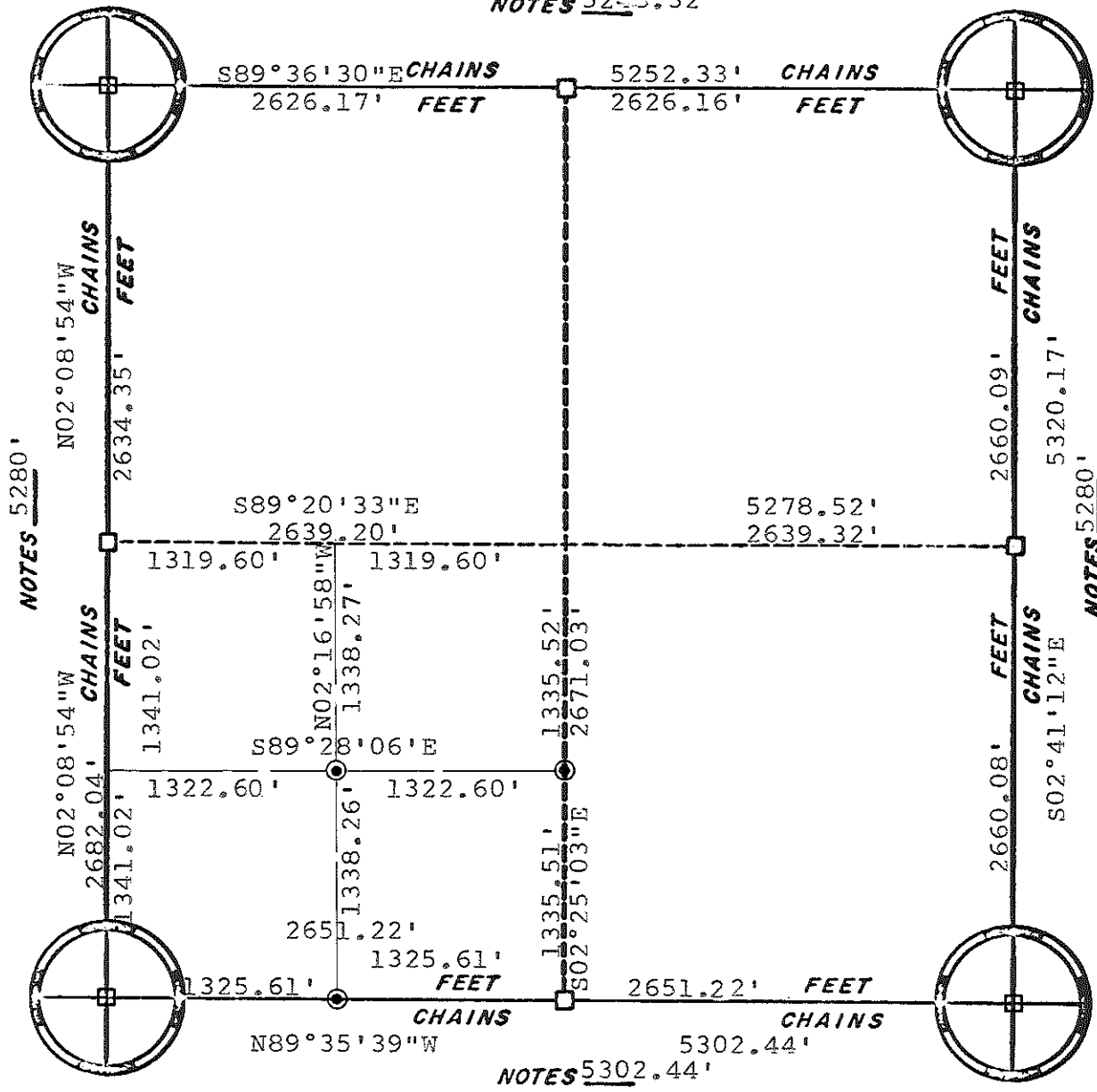
existing 1 1/4" iron pipe

**ORIGINAL SURVEY DATA**

BY \_\_\_\_\_  
DATE 9/12/78

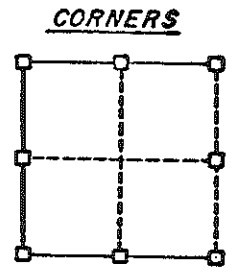
SURVEYED BY L.A. Feddersen	CONTRACT DATE March, 1977	COUNTY MONROE [REDACTED]	TOWN-VILLAGE-CITY LAFAYETTE	SECTION 16	TOWNSHIP 18N	RANGE 3W
-------------------------------	------------------------------	-----------------------------	--------------------------------	---------------	-----------------	-------------

NOTES 52...32'



□ = set Harrison monument

⊙ = set 1-3/16"x30" round iron bar

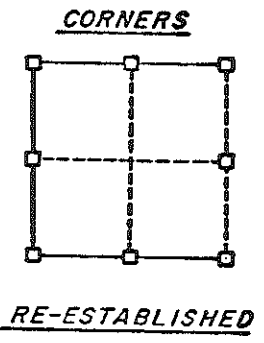
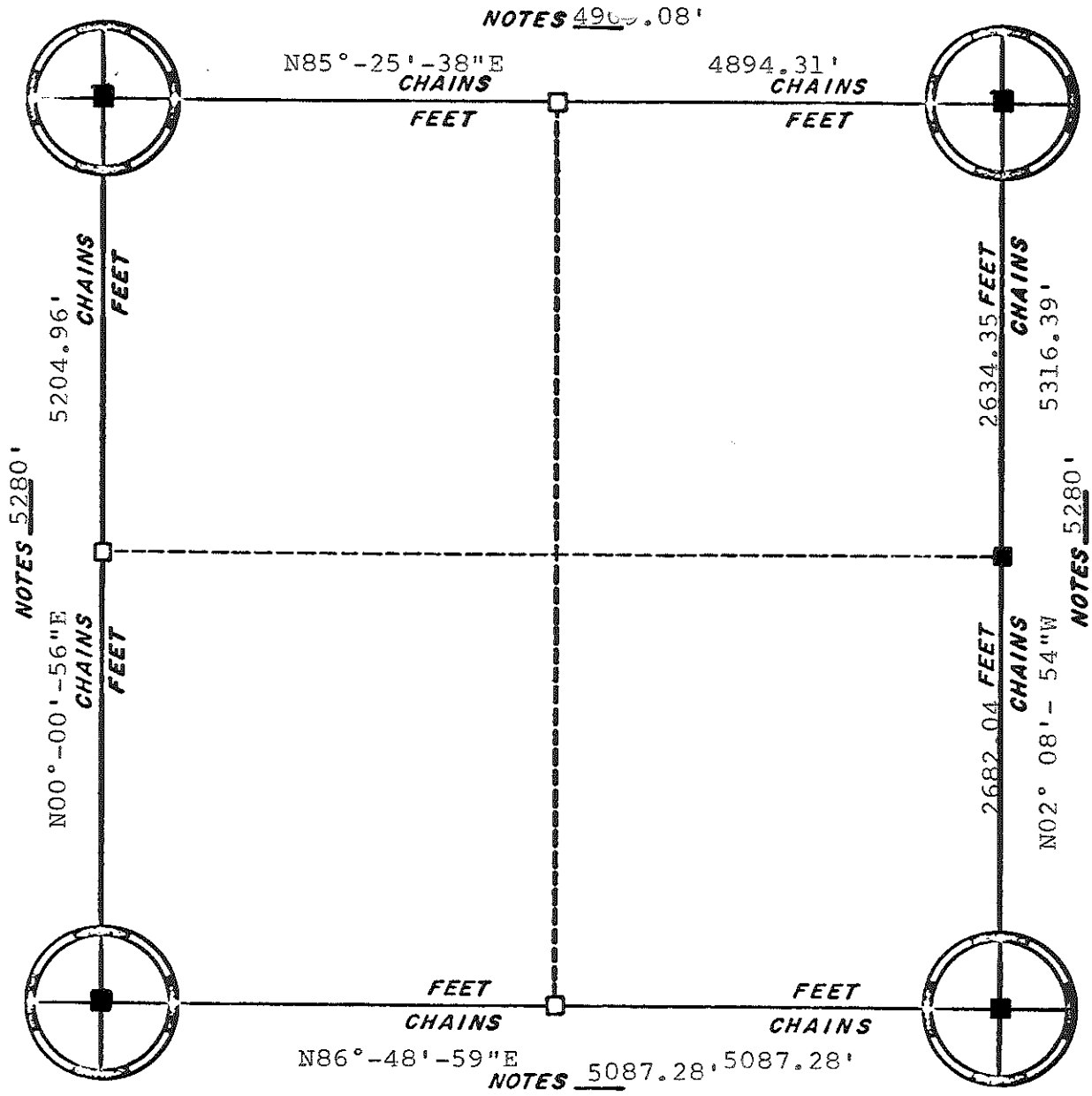


RE-ESTABLISHED

ORIGINAL SURVEY DATA

BY \_\_\_\_\_  
DATE 9/12/78

SURVEYED BY L.A. Feddersen	CONTRACT DATE March, 1978	COUNTY MONROE [REDACTED]	TOWN-VILLAGE-CITY LAFAYETTE	SECTION 17	TOWNSHIP 18N	RANGE 3W
-------------------------------	------------------------------	-----------------------------	--------------------------------	---------------	-----------------	-------------

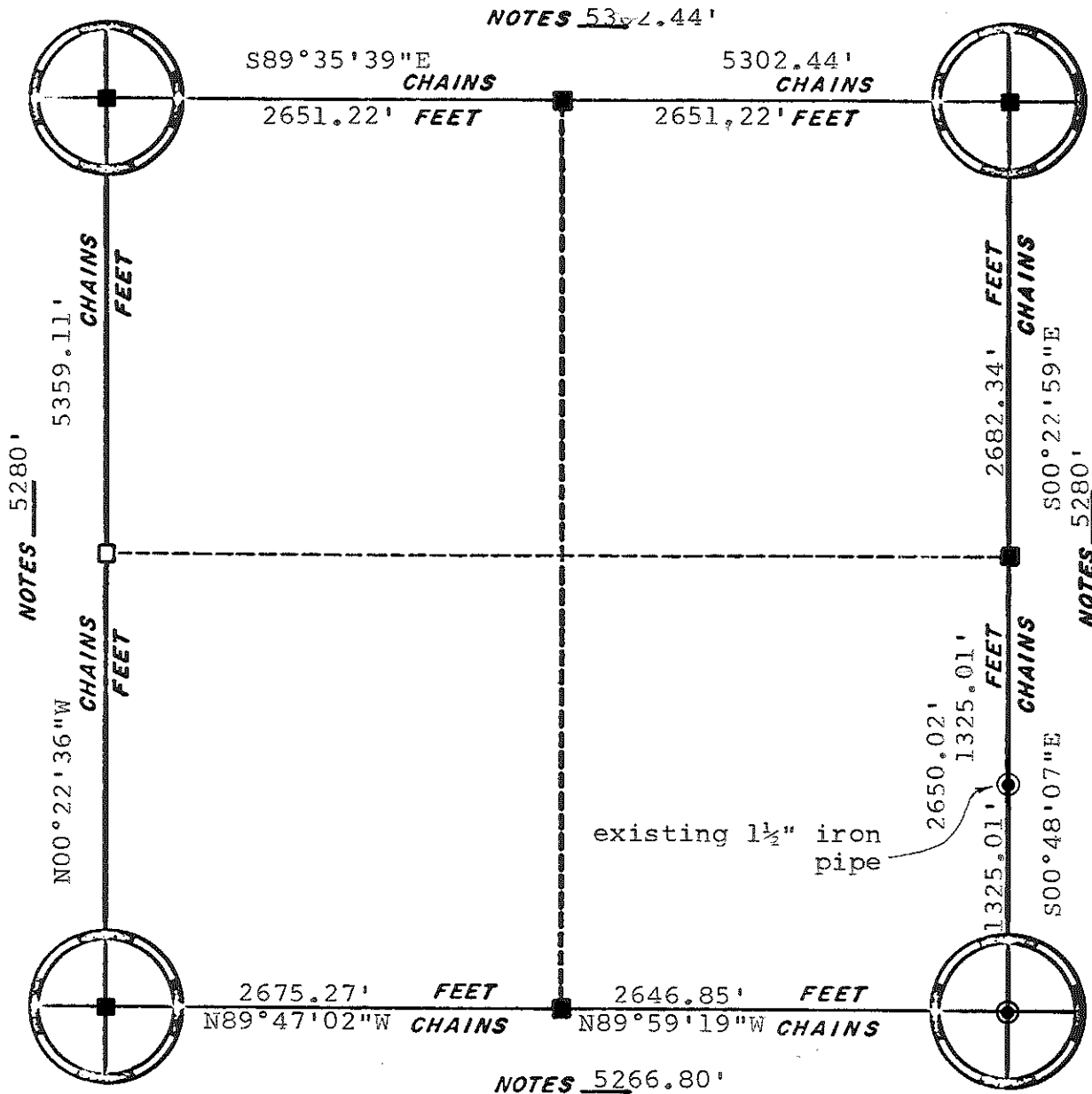


■ - Set Harrison Monument.

ORIGINAL SURVEY DATA

BY \_\_\_\_\_  
DATE OCT, 3, 1978

SURVEYED BY L.A. Peddersen D.J. Malliet	CONTRACT DATE March, 1977	COUNTY MONROE [REDACTED]	TOWN-VILLAGE - <del>EXTN</del> Lafayette	SECTION 18	TOWNSHIP 18N	RANGE 3W
---	------------------------------	-----------------------------	---	---------------	-----------------	-------------

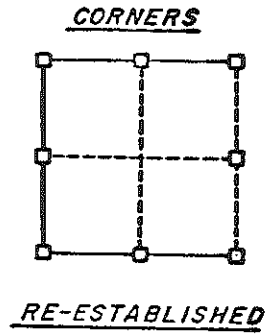
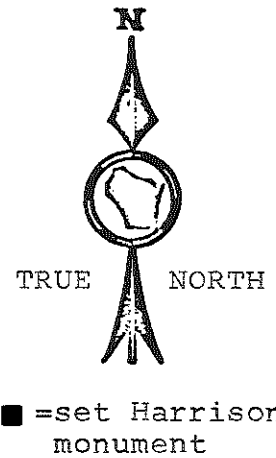


NOTES 5372.44'

NOTES 5280'

NOTES 5280'

NOTES 5266.80'



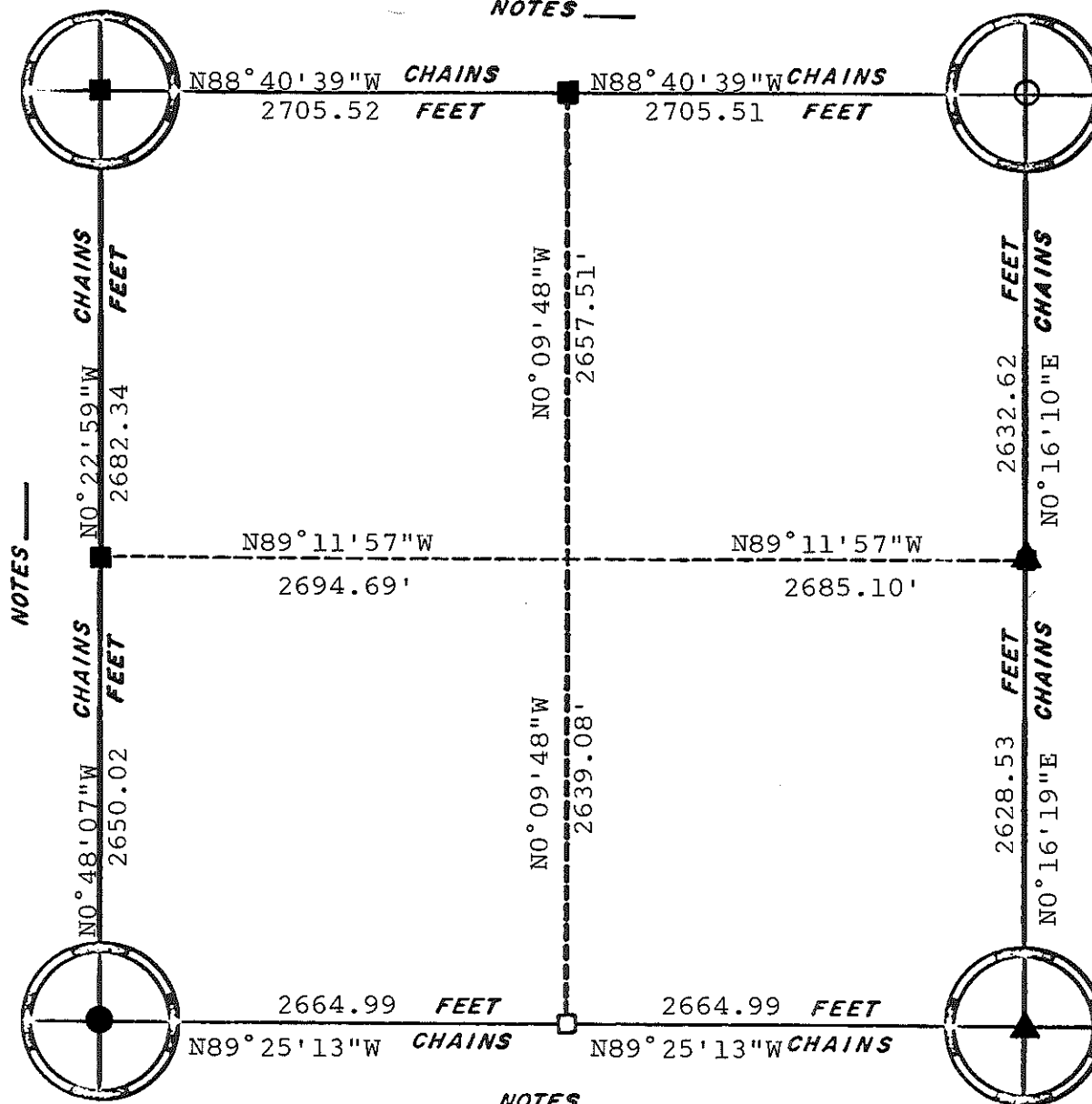
existing 1 1/2" iron pipe

ORIGINAL SURVEY DATA

BY \_\_\_\_\_  
DATE 9/12/78

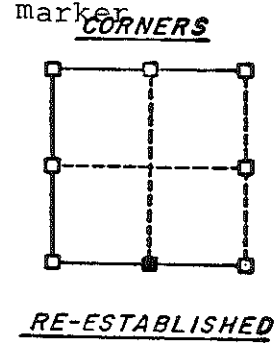
SURVEYED BY L.A. Feddersen	CONTRACT DATE March, 1977	COUNTY MONROE _____	TOWN-VILLAGE-CITY LAFAYETTE	SECTION 20	TOWNSHIP 18N	RANGE 3W
-------------------------------	------------------------------	------------------------	--------------------------------	---------------	-----------------	-------------

NOTES \_\_\_\_\_



- = Ex. Harrison
- = Set Harrison
- = Ex. 1 1/4" iron pipe
- = Ex. 1 1/2" iron pipe
- ▲ = Ex. Fort McCoy conc marker

NOTES \_\_\_\_\_



NOTES \_\_\_\_\_

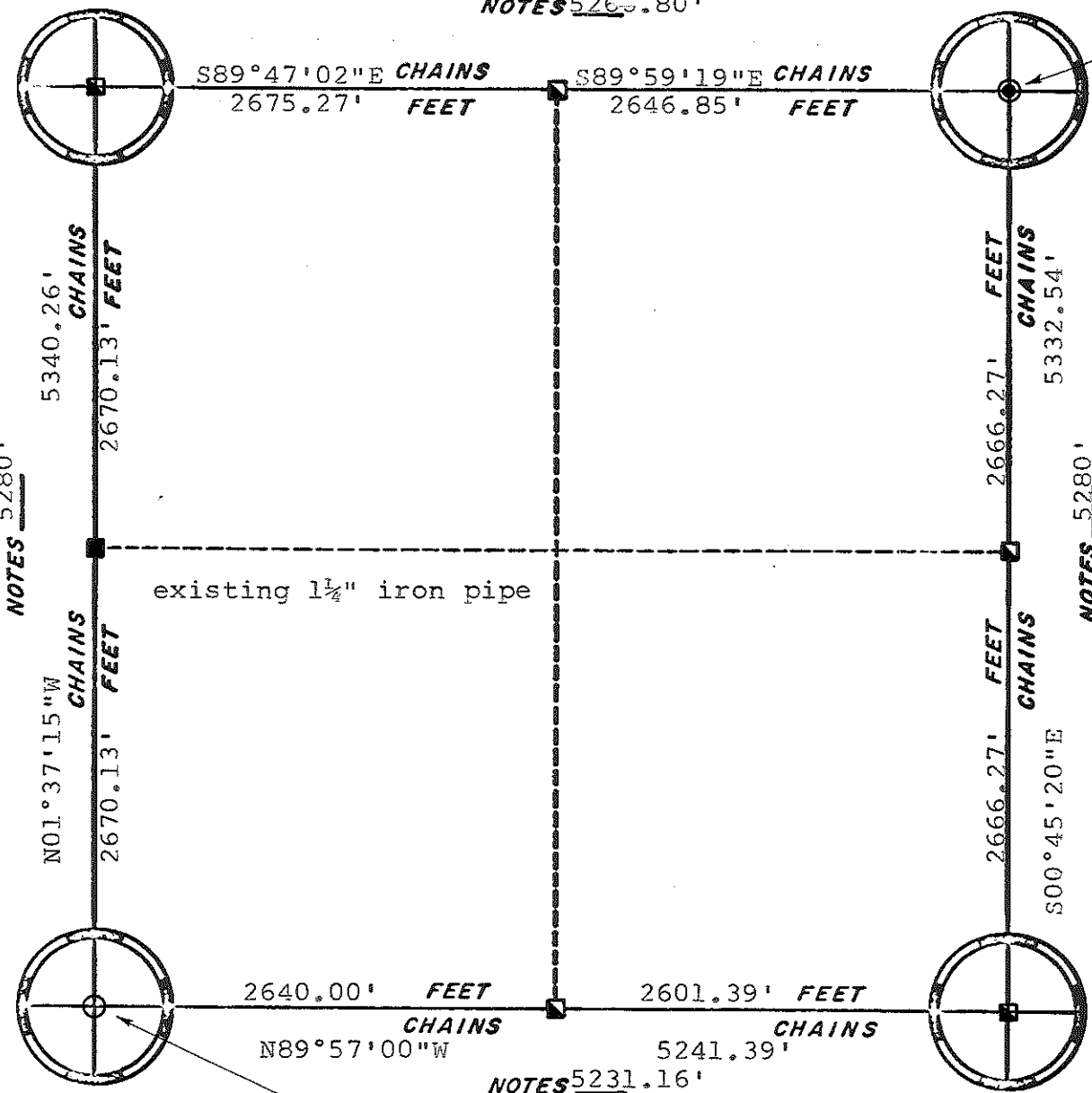
ORIGINAL SURVEY DATA

BY \_\_\_\_\_  
DATE \_\_\_\_\_

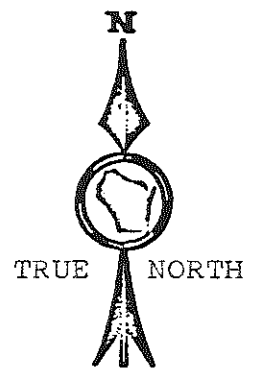
SURVEYED BY	CONTRACT DATE	COUNTY	MONROE	TOWN-VILLAGE-CITY	SECTION	TOWNSHIP	RANGE
L. A. Feddersen	Dec. 17, 1982			LaFayette	21	18N	3W



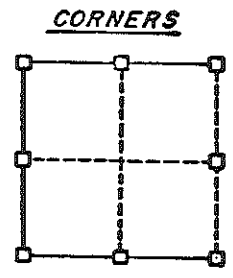
NOTES 5280 .80'



existing 1 1/2" iron pipe



■ = set Harrison monument



RE-ESTABLISHED

NOTES 5280'

NOTES 5280'

NOTES 5231.16'

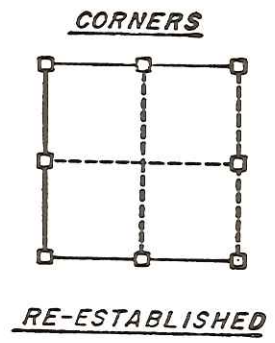
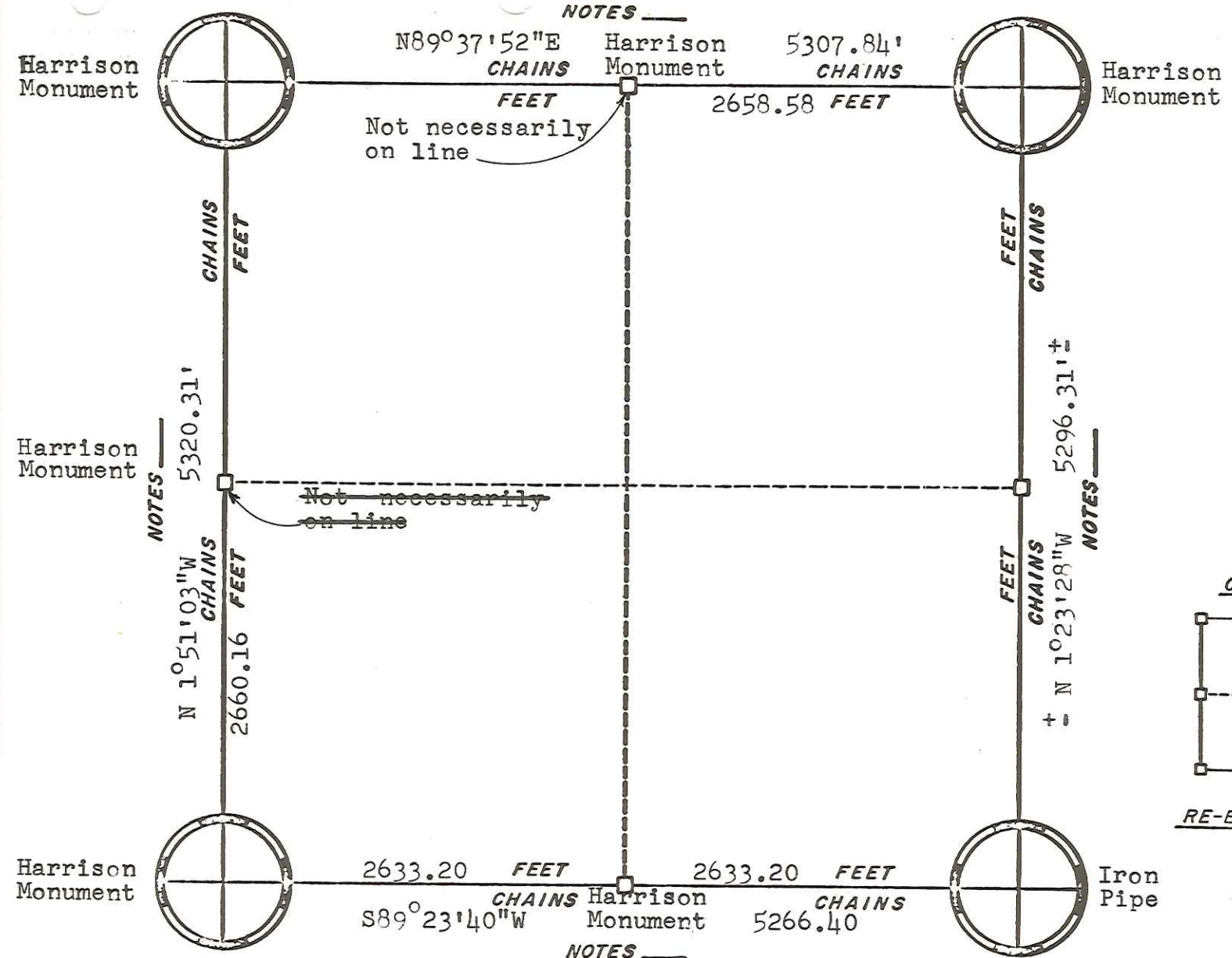
existing 3/4" round iron bar

ORIGINAL SURVEY DATA

BY \_\_\_\_\_  
DATE 9/12/78

SURVEYED BY L.A. Feddersen	CONTRACT DATE March, 1977	COUNTY MONROE	TOWN-VILLAGE-CITY LAFAYETTE	SECTION 29	TOWNSHIP 18N	RANGE 3W
-------------------------------	------------------------------	------------------	--------------------------------	---------------	-----------------	-------------

NOTES —



ORIGINAL SURVEY DATA

BY \_\_\_\_\_  
 DATE March 13, 1981

SURVEYED BY W. C. Jung	CONTRACT DATE May, 1980	COUNTY MONROE	TOWN-VILLAGE-CITY Lafayette Angola	SECTION 33	TOWNSHIP T18N	RANGE R3W
---------------------------	----------------------------	------------------	--	---------------	------------------	--------------