

# CERTIFICATE

I, Nicholas M. Hillmer, do hereby certify that this document and the data contained herein was prepared by me or under my direct supervision and that I am a duly Licensed Land Surveyor under the laws of the State of Wisconsin.

Dated this 21st day of May, 2013



Nicholas M. Hillmer, P.L.S. 2909  
Anderson Engineering of Minnesota, LLC.

# CERTIFIED LAND CORNER

History of corner established since Original Government Survey

Camp McCoy boundary survey map 47-018-037-A47 of 1962 shows this corner as a 1 inch pipe.

No. 21803362000



## Description of evidence found

On January 11th, 2013, Anderson Engineering of Minnesota located the 1 inch iron pipe 1.0 foot above grade. The pipe is accepted as the best available evidence.

Description of corner and witness monuments, references and accessories used to perpetuate the original or re-established location of this corner:

Witnesses to corner location:

Nick Hillmer  
Josh Oslund  
Dan Greenwald

MONROE COUNTY  
COORDINATE SYSTEM  
NAD 1983 (2007)

1 INCH PIPE

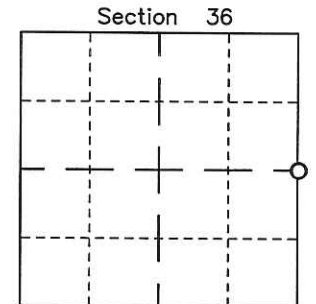
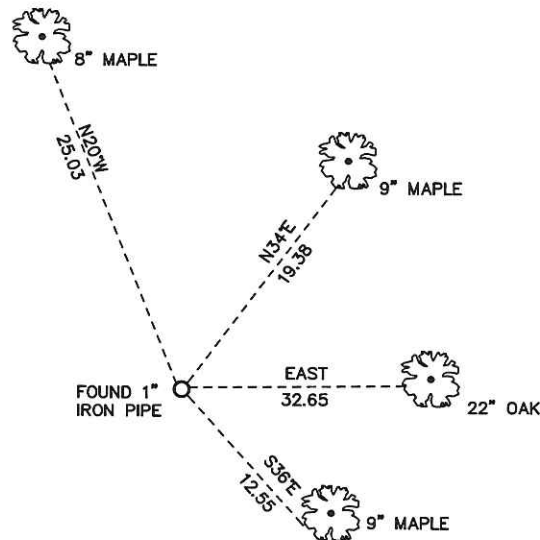
Northing (Y) 397414.08

Easting (X) 663211.54

Base Station - 22 182W

Northing (Y) 408053.25

Easting (X) 679287.00



○ = LOCATION CORNER  
Corner I.D. E 1/4 36  
T 18 N R 3 W  
Town of La Fayette  
Monroe County, WI.

All distances are shown in U.S. Survey Feet.  
Ties are to 60D nails set in trees.  
Bearings are for tie reference purposes only.  
Coordinates were derived from RTK GNSS procedures.