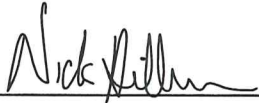


## CERTIFICATE

I, Nicholas M. Hillmer, do hereby certify that this document and the data contained herein was prepared by me or under my direct supervision and that I am a duly Licensed Land Surveyor under the laws of the State of Wisconsin.

Dated this 21st day of May, 2013



Nicholas M. Hillmer, P.L.S. 2909  
Anderson Engineering of Minnesota, LLC.

## CERTIFIED LAND CORNER

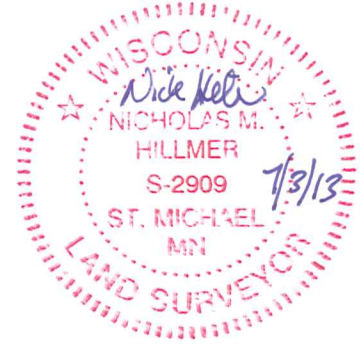
### History of corner established since Original Government Survey

This monument is depicted as the Township corner in a boundary survey of Habelman's cranberry bog done by Fort McCoy in the 1940's, document number 47-018-0371-A48.

### Description of evidence found

On April 10th, 2013, Anderson Engineering of Minnesota located a 6 inch wide by 1 inch thick strap iron set in concrete up 2 1/2 feet. The monument is accepted as the best available evidence.

No. 21803360000



Description of corner and witness monuments, references and accessories used to perpetuate the original or re-established location of this corner:

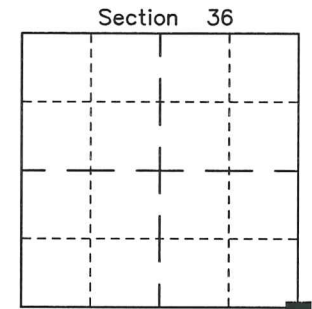
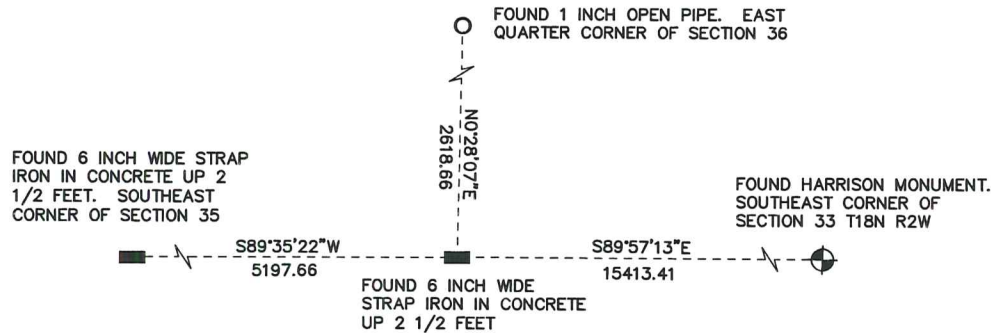
Witnesses to corner location:

Nick Hillmer  
Josh Oslund  
Dan Greenwald

MONROE COUNTY  
COORDINATE SYSTEM  
NAD 1983 (2007)

HARRISON MONUMENT  
Northing (Y) 394795.51  
Easting (X) 663190.13

Base Station - 22 182W  
Northing (Y) 408053.25  
Easting (X) 679287.00



■ = LOCATION CORNER  
Corner I.D. SE 36  
T 18 N R 3 W  
Town of La Fayette  
Monroe County, WI.

All distances are shown in U.S. Survey Feet.  
Bearings are for tie reference purposes only.  
Coordinates were derived from RTK GNSS procedures.