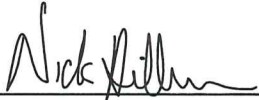


CERTIFICATE

I, Nicholas M. Hillmer, do hereby certify that this document and the data contained herein was prepared by me or under my direct supervision and that I am a duly Licensed Land Surveyor under the laws of the State of Wisconsin.

Dated this 21st day of May, 2013



Nicholas M. Hillmer, P.L.S. 2909
Anderson Engineering of Minnesota, LLC.

CERTIFIED LAND CORNER

History of corner established since Original Government Survey

No known history of this corner since the government survey.

Description of evidence found

On April 10th, 2013, Anderson Engineering of Minnesota located a 6 inch wide by 1 inch thick strap iron set in concrete up 2 1/2 feet in a Fort McCoy natural area. This is the same monument used at the southeast corner of Section 36 which is called out as being the township corner per a boundary survey of Habelman's cranberry bog done by Fort McCoy in the 1940's, document number 47-018-0371-A48. The monument is accepted as the best available evidence.

No. 21803350000



Description of corner and witness monuments, references and accessories used to perpetuate the original or re-established location of this corner:

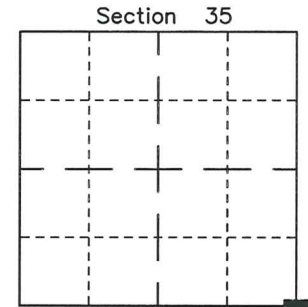
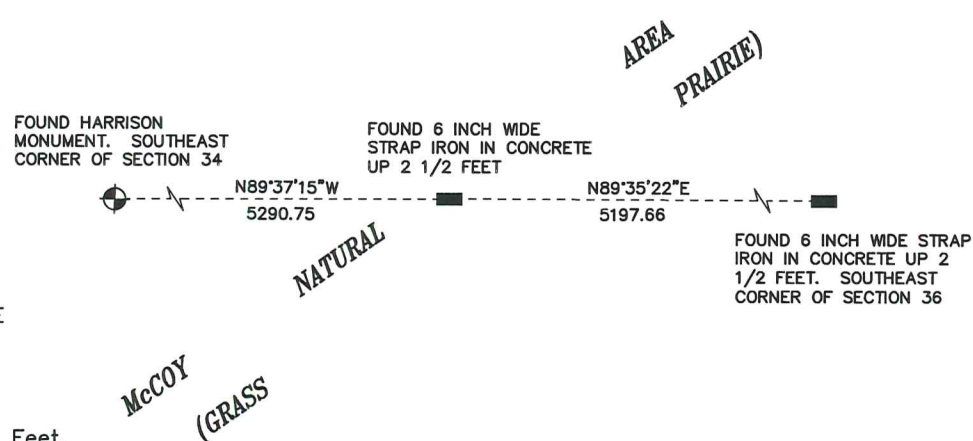
Witnesses to corner location:

Nick Hillmer
Josh Oslund
Dan Greenwald

MONROE COUNTY
COORDINATE SYSTEM
NAD 1983 (2007)

HARRISON MONUMENT
Northing (Y) 394758.27
Easting (X) 657992.60

Base Station - 22 182W
Northing (Y) 408053.25
Easting (X) 679287.00



■ = LOCATION CORNER
Corner I.D. SE 35
T 18 N R 3 W
Town of La Fayette
Monroe County, WI.

All distances are shown in U.S. Survey Feet.
Bearings are for tie reference purposes only.
Coordinates were derived from RTK GNSS procedures.