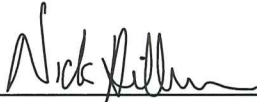


CERTIFICATE

I, Nicholas M. Hillmer, do hereby certify that this document and the data contained herein was prepared by me or under my direct supervision and that I am a duly Licensed Land Surveyor under the laws of the State of Wisconsin.

Dated this 21st day of May, 2013



Nicholas M. Hillmer, P.L.S. 2909
Anderson Engineering of Minnesota, LLC.

CERTIFIED LAND CORNER

History of corner established since Original Government Survey

The 1940's McCoy boundary notes show a "old McCoy mont." at this location. There is only one found document from Fort McCoy with line work illustrating this position in a 1930's expansion map. The map does not identify any monument information.

Description of evidence found

On April 4th, 2013, Anderson Engineering of Minnesota recovered the "old McCoy mont." a 4 foot tall 9 inch concrete square stamped "US MIL RES NO. 4. The monument was not accepted as the corner. On May 7th, 2013, Anderson Engineering of Minnesota set a Harrison monument by extending the north-south quarter line down through the found "old McCoy mont." to the township line, established by the southeast corner of Section 33 and the southeast corner of Section 35. The monument is flush with the ground.

No. 21803340020



Description of corner and witness monuments, references and accessories used to perpetuate the original or re-established location of this corner:

Witnesses to corner location:

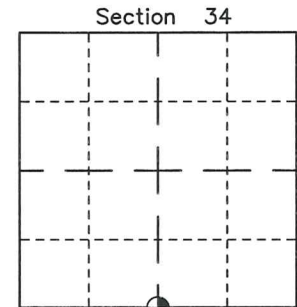
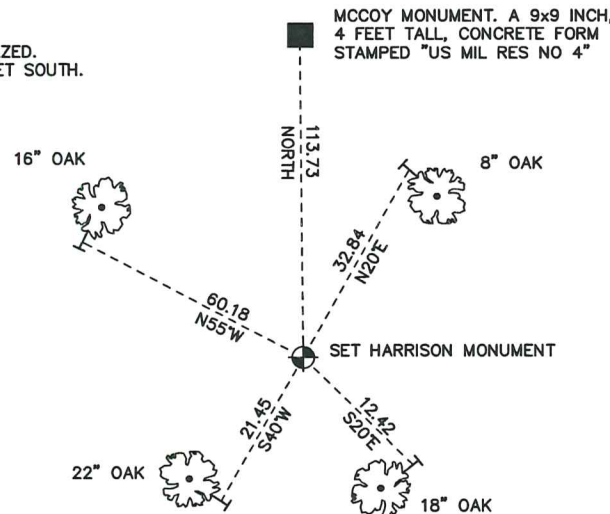
Nick Hillmer
Josh Oslund
Dan Greenwald

ALL TREES DOUBLE BLAZED.
SIGN AND POST 0.8 FEET SOUTH.

MONROE COUNTY
COORDINATE SYSTEM
NAD 1983 (2007)

HARRISON MONUMENT
Northing (Y) 394810.78
Easting (X) 650056.64

Base Station - 22 182W
Northing (Y) 408053.25
Easting (X) 679287.00



⊕ = LOCATION CORNER
Corner I.D. S 1/4 34
T 18 N R 3 W
Town of La Fayette
Monroe County, WI.

All distances are shown in U.S. Survey Feet.
Ties are to 60D nails set in trees.
Bearings are for tie reference purposes only.
Coordinates were derived from RTK GNSS procedures.