


CERTIFICATE

I, Nicholas M. Hillmer, do hereby certify that this document and the data contained herein was prepared by me or under my direct supervision and that I am a duly Licensed Land Surveyor under the laws of the State of Wisconsin.

Dated this 23rd day of May, 2013



Nicholas M. Hillmer, P.L.S. 2909
Anderson Engineering of Minnesota, LLC.

CERTIFIED LAND CORNER

History of corner established since Original Government Survey

On October 3rd, 1986, Garold Sime set this corner on line and equidistant between the southeast corner of Section 33 and the northeast corner of Section 33.

Description of evidence found

On August 30th, 2012, Anderson Engineering of Minnesota located the Harrison monument flush with the ground and 0.1 feet north of a green metal fence post.

No. 21803332000



Description of corner and witness monuments, references and accessories used to perpetuate the original or re-established location of this corner:

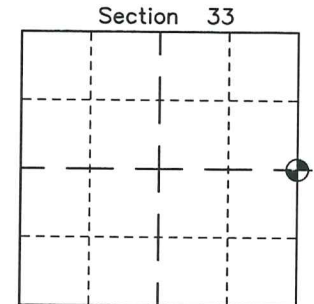
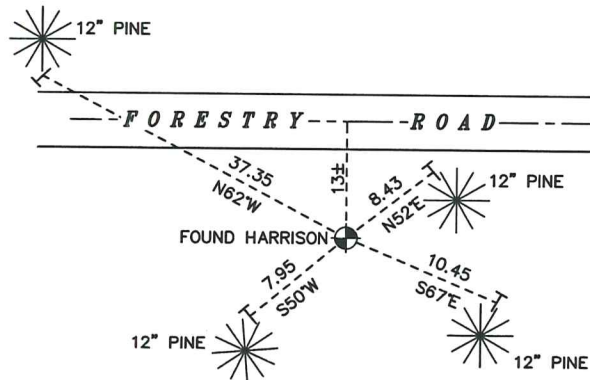
Witnesses to corner location:

Nick Hillmer
Josh Oslund
Dan Greenwald

MONROE COUNTY
COORDINATE SYSTEM
NAD 1983 (2007)

HARRISON MONUMENT
Northing (Y) 397476.33
Easting (X) 647378.92

Base Station - 22 182W
Northing (Y) 408053.25
Easting (X) 679287.00



⊕ = LOCATION CORNER
Corner I.D. E 1/4 33
T 18 N R 3 W
Town of La Fayette
Monroe County, WI.

All distances are shown in U.S. Survey Feet.
Ties are to 60D nails set in trees.
Bearings are for tie reference purposes only.
Coordinates were derived from RTK GNSS procedures.

CERTIFICATE

CERTIFIED LAND CORNER

No. 117

21803332000

I, Garold A. Sime 3rd, do hereby certify that on the 3rd day of October 1986, I found ~~no evidence~~ (no evidence) of the E/4 corner of Section 33, T 18 N, R 3W Fourth Principal Meridian, and I re-established said corner according to the Wisconsin Statutes as shown and described hereon.
 Dated this 3rd day of Oct. 1986.

Garold A. Sime

Deputy County Surveyor
 Title

History of corner establishment since Original Government Survey

Fort McCoy boundary notes call for being near this corner. They mention no monument being set. No other known no history about this corner since the original government survey.

Description of corner evidence found:

I set this corner on line and equidistant between existing section corners

COUNTY SURVEYOR FORM NO. 1

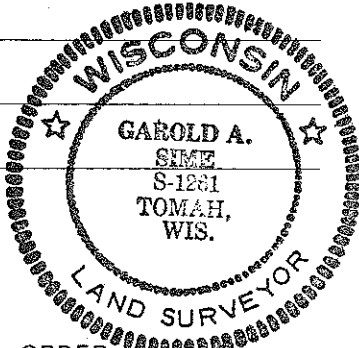
Description of corner and witness monuments, references and accessories used to perpetuate the original or re-established location of this corner:

Set Harrison Monument at corner

Witnesses to corner location:

Garold A. Sime, R.L.S.

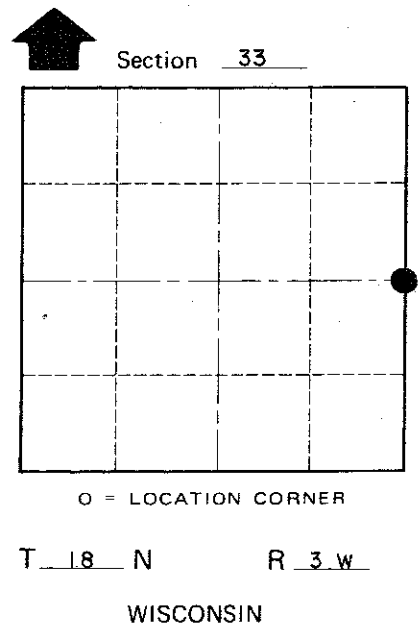
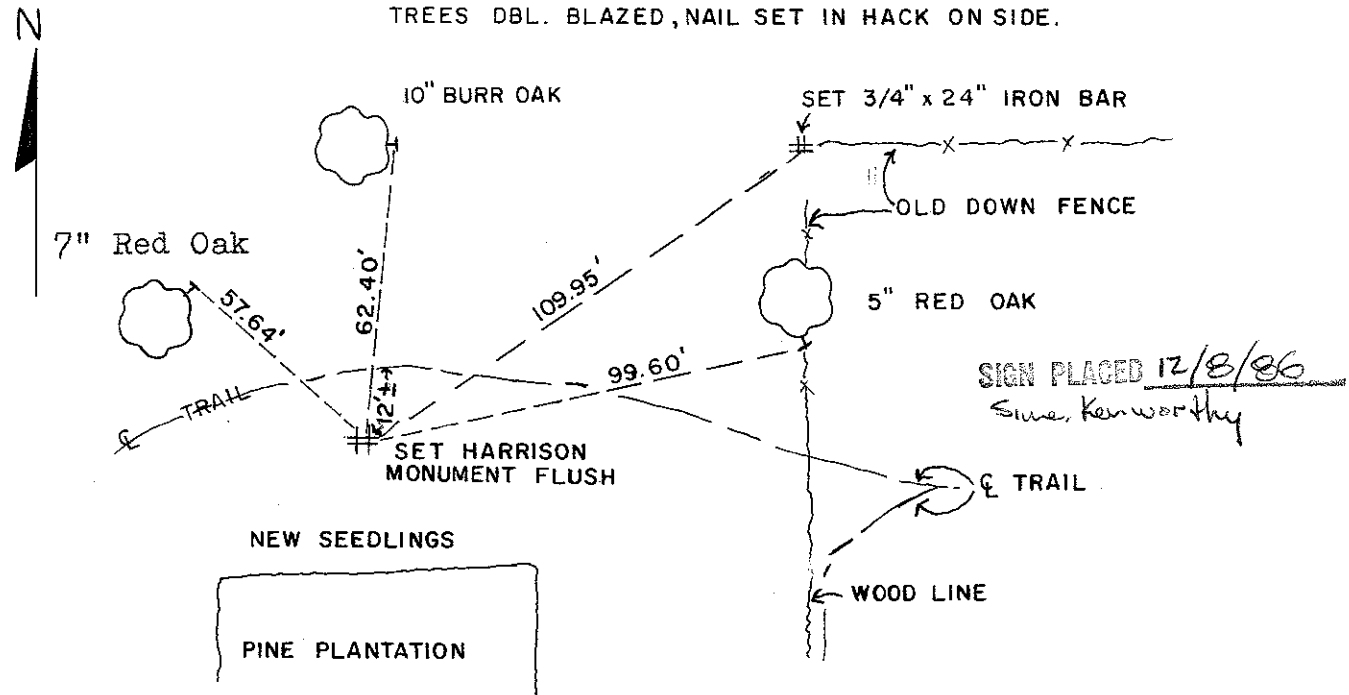
John Kenworthy



SURVEY CONTROL ORDER

Horizontal	_____
Vertical	_____

Corner	East (X)	North (Y)	Elevation (Z)	Zone
Control Sta. Name				



City, Village or Town LAFAYETTE
 County of MONROE