

2180330020

I, William C. Jung, do hereby certify that on the 15th day of May 19 80, I found no evidence of the North 1/4 corner of Section 4, T 17 N, R 3 W Fourth Principal Meridian, and I re-established said corner according to the Wisconsin Statutes as shown and described hereon.

History of corner establishment since Original Government Survey
None recorded since the original government survey.

Dated this 5th day of March 19 81.

Description of corner evidence found:
Set a Harrison marker equidistant and on line with the section corners East and West.

William C. Jung

William C. Jung, R.L.S. 1323
Title

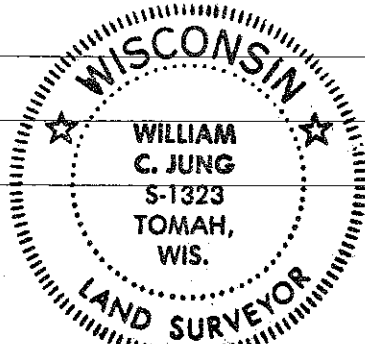
Description of corner and witness monuments, references and accessories used to perpetuate the original or re-established location of this corner:

Approved: **HARLEY A. SIMÉ**
MONROE CO. SURVEYOR

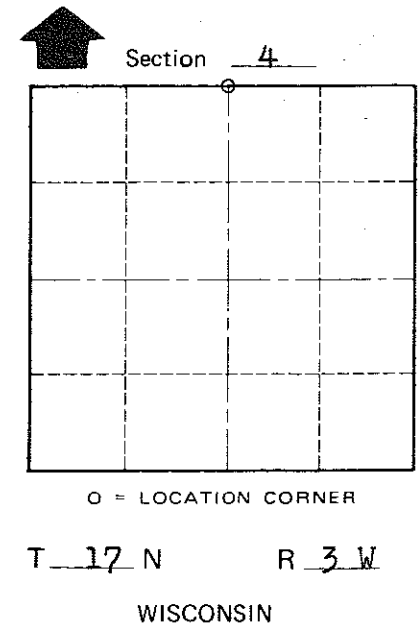
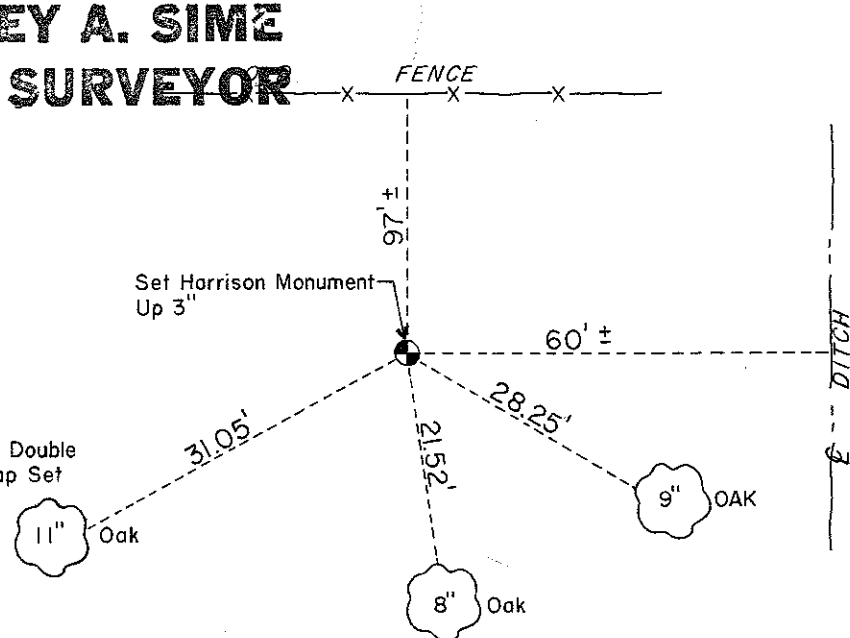
Witnesses to corner location:

William C. Jung

Scott Sowers



NOTE: All Bearing Trees Are Double Blazed With Nail & Cap Set



COUNTY SURVEYOR FORM NO. 1

SURVEY CONTROL ORDER

Horizontal	_____
Vertical	_____

WISCONSIN COORDINATE SYSTEM

Corner	East (X)	North (Y)	Elevation (Z)	Zone
Control Sta. Name				

City, Village or Town Angelo
County of Monroe
Wisconsin