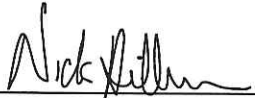


CERTIFICATE

I, Nicholas M. Hillmer, do hereby certify that this document and the data contained herein was prepared by me or under my direct supervision and that I am a duly Licensed Land Surveyor under the laws of the State of Wisconsin.

Dated this 21st day of May, 2013



Nicholas M. Hillmer, P.L.S. 2909
Anderson Engineering of Minnesota, LLC.

CERTIFIED LAND CORNER

History of corner established since Original Government Survey

The 1940's McCoy boundary notes show a corner at this location. In 1980 Harley A. Sime did not find the McCoy monument and determined it was bulldozed out. Sime set a 1 1/2 inch iron pipe at a computed location after surveying Sections 4, 5, and 6 of T17N R3W, and Section 33 and part of Section 34 of T18N R3W. Sime states that the existing fence line along the north line of the Northeast Quarter of Section 4 is definitely in error.

Description of evidence found

On August 9, 2012, Anderson Engineering of Minnesota located the 1 1/2 inch iron pipe set by Harley Sime in 1980. On May 8th, 2013, Anderson Engineering of Minnesota replaced Sime's iron with a 3/4 inch aluminum drive monument with a 3 1/4 inch aluminum cap, stamped "FORT MCCOY BOUNDARY" "2013" "ANDERSON ENG. OF MN."

No. 21803330000



Description of corner and witness monuments, references and accessories used to perpetuate the original or re-established location of this corner:

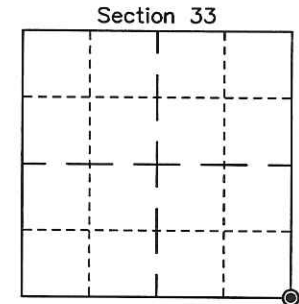
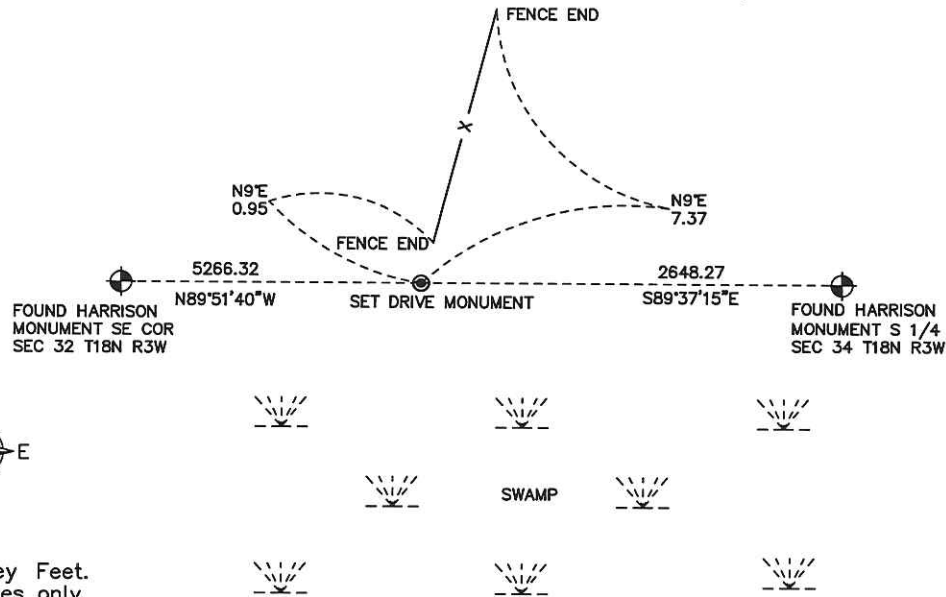
Witnesses to corner location:

Nick Hillmer
Josh Oslund
Dan Greenwald

MONROE COUNTY
COORDINATE SYSTEM
NAD 1983 (2007)

HARRISON MONUMENT
Northing (Y) 394828.29
Easting (X) 647408.42

Base Station - 22 182W
Northing (Y) 408053.25
Easting (X) 679287.00



● = LOCATION CORNER
Corner I.D. SE 33
T 18 N R 3 W
Town of La Fayette
Monroe County, WI.

All distances are shown in U.S. Survey Feet.
Bearings are for tie reference purposes only.
Coordinates were derived from RTK GNSS procedures.

21803330000

I, Harley A. Sime, do hereby certify that on the 19th day of May 19 80, I found ~~(evidence)~~ (no evidence) of the Northeast corner of Section 4, T 17 N, R 3 W Fourth Principal Meridian, and I re-established said corner according to the Wisconsin Statutes as shown and described hereon.

Dated this 5th day of March 19 81.

William C. Jung

William C. Jung, R.L.S. 1323

Title

History of corner establishment since Original Government Survey

Government surveyors set a monument at this corner during the McCoy boundary survey of WWII.

Description of corner evidence found:

I could not find the boundary marker set by the government surveyors. It would appear that it was bulldozed out. I set the corner at a computed location after surveying out Sections 4, 5, and 6 of T17N-R3W, and Section 33 and part of Section 34 of T18N-R3W. The location fits the town line to the West and it fits the original note needle variation North and South. The East lines of Section 33 and Section 4 fit the original distances good. There is about 8 feet excess per 1/2 mile along the latter lines. The existing line fence along the North line of the NEL/4 of Section 4 is definitely in error.

COUNTY SURVEYOR FORM NO. 1

Description of corner and witness monuments, references and accessories used to perpetuate the original or re-established location of this corner:

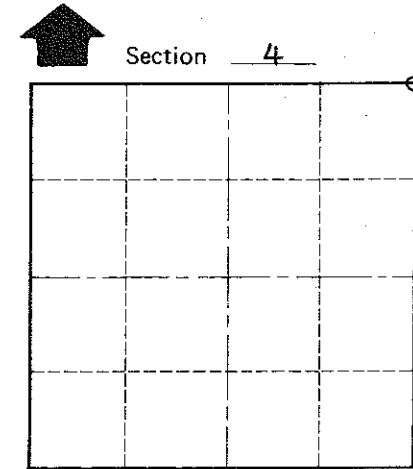
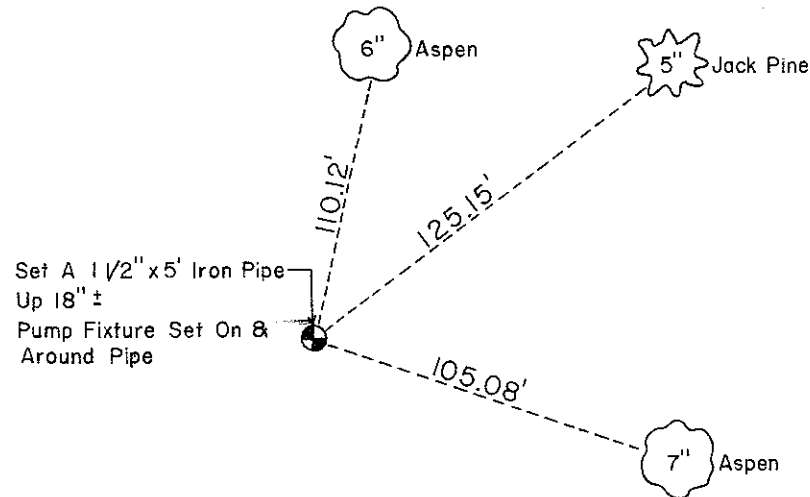
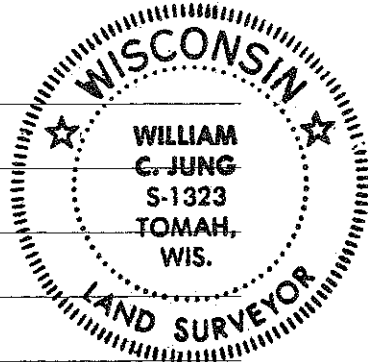
Set an iron pipe in the marsh.

Witnesses to corner location:

Scott Sowers

Carlton Pietz

Todd Tormoen



T 17 N R 3 W
WISCONSIN

Approved: **HARLEY A. SIMÉ**
MONROE CO. SURVEYOR

NOTE: Trees Double Blazed With Nail & Cap's Set

SURVEY CONTROL ORDER

Horizontal	_____
Vertical	_____

WISCONSIN COORDINATE SYSTEM

Corner	East (X)	North (Y)	Elevation (Z)	Zone
Control Sta. Name				

City, Village or Town Angelo
County of Monroe
Wisconsin