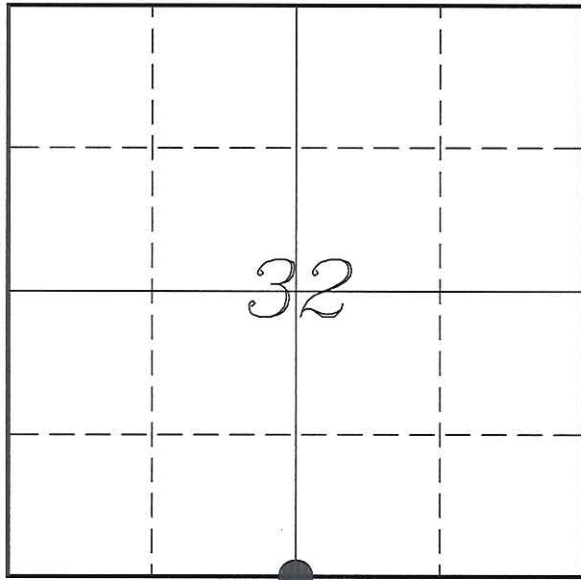


U. S. PUBLIC LAND SURVEY MONUMENT RECORD

SECTION 32, T18N, R3W, TOWN OF LAFAYETTE  
MONROE COUNTY, WISCONSIN



LOCATION OF LANDMARK

MONROE COUNTY COORDINATE SYSTEM	
Northing	394854.310
Easting	639506.980
Datum	NAD 1983 (1991)
Elevation	
Datum	
TYPE OF LANDMARK:	
Existing Harrison Monument	
BEARINGS ARE REFERENCED TO:	
Monroe County Coordinates	

Witnesses: Laurence E Johns III

Date: 9 October 2013

Describe any record evidence, monument evidence, testimonial evidence or any other material evidence you considered and whether the monument was found or restored through acceptance of an obliterated evidence location.

No bearing trees of record were located.

I found the Harrison Monument shown on previous surveys. It is located at the intersection of fences.

I did not find a survey that indicates when it was monumented, but was done so sometime before 1981. Possibly during the initial phase of the bounty program in the 1970's.

This location matches occupation, matches distances to the West and East real well and has been used in surveys since at least 30 years.

I accepted the monument as the best available evidence of the original government corner and placed 4 ties as shown.

Describe or show any material discrepancy between the location of the restored corner and that of the corner previously restored or re-established.

Uriah Biggs established this corner in November 1845.

Bill Jung was at this corner, March 1981. He set a Harrison Monument at a fence corner and prepared a tie sheet.

Bill Jung was at this corner again, in December 1981, during a survey in Section 5. He shows an existing Harrison Monument at this corner.

Bryan Meyer was at this corner, in February 1993, during a survey in Section 32. He shows a Harrison Monument at this corner.

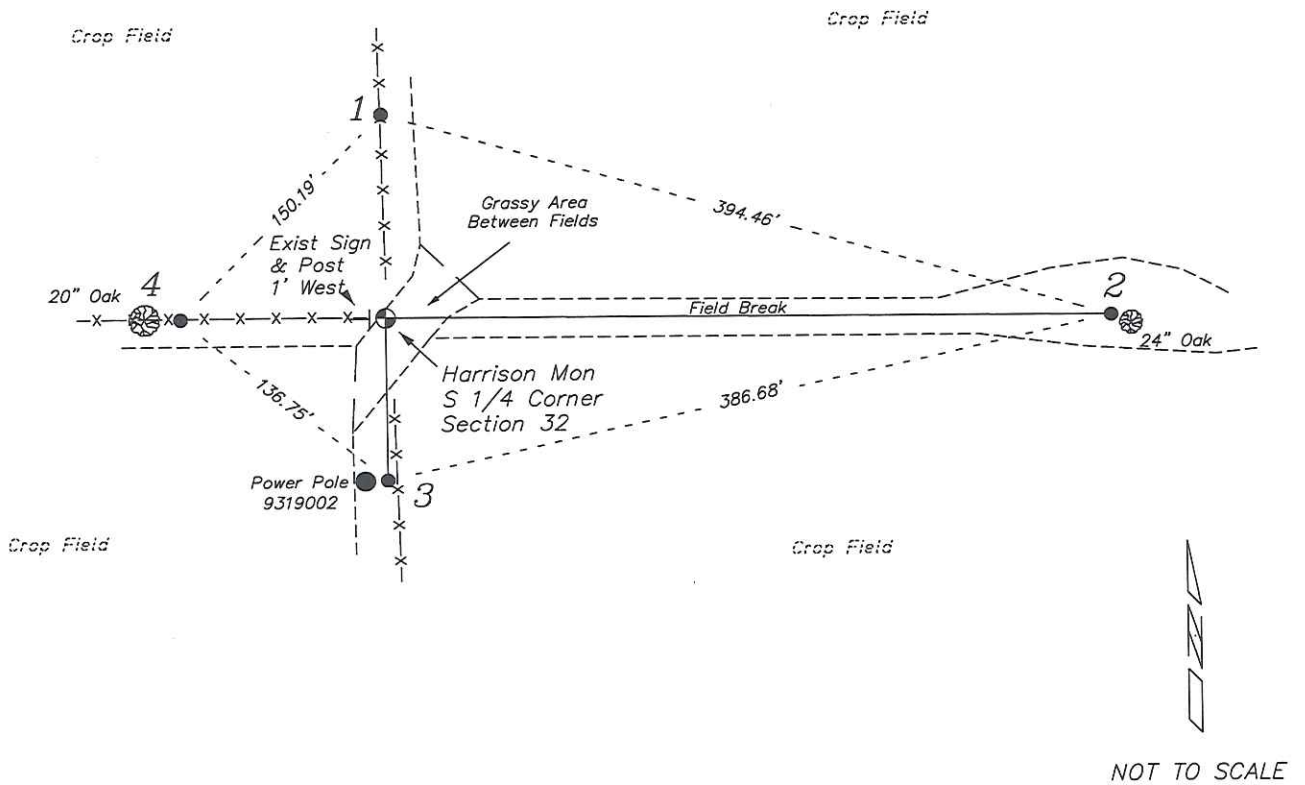
Gary Sime was at this corner, in April 1994, during a survey in Section 5. He shows an existing Harrison Monument at this corner.

Rodney Maxwell was at this corner, in April 2002, during a survey in Section 5. He shows an existing Harrison Monument at this corner.

Stephen Solberg was at this corner, in September 2006, during a survey in Section 32. He shows an existing Harrison Monument at this corner.

## RECORD OF DURABLE WITNESS MONUMENTS

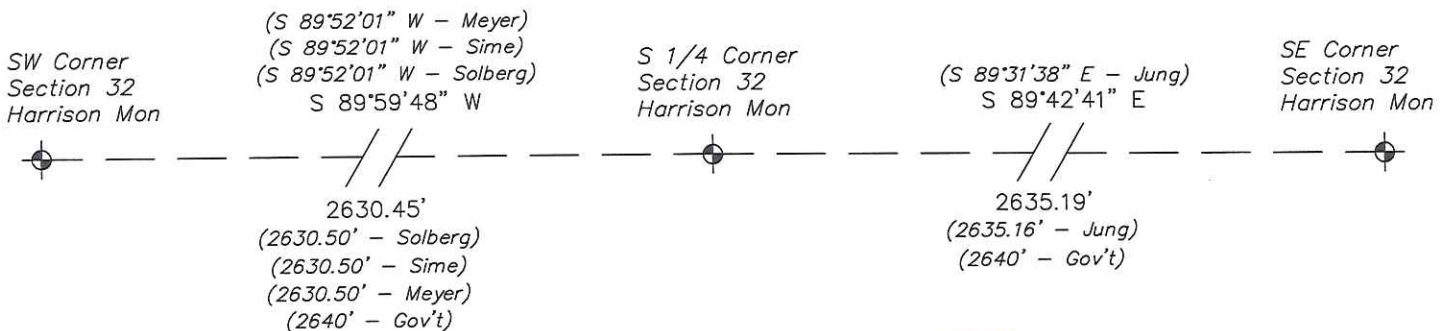
NO	DESCRIPTION	BEARING	DISTANCE
1	Set 3/4" x 18" Iron Rod In Fence Line	N 00°37'20" W	106.75'
2	Set 3/4" x 18" Iron Rod 2' Northwest of a 24" Oak	S 89°41'35" E	378.01'
3	Set 3/4" x 18" Iron Rod 1' East of Power Pole # 9319002	S 00°12'33" E	84.90'
4	Set 3/4" x 18" Iron Rod In Fence Line - 3' East of 20" Oak	N 89°58'38" W	106.86'



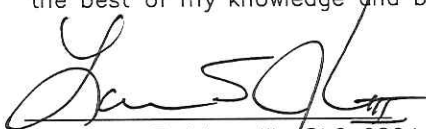
NOT TO SCALE

## PLAN VIEW DRAWING OF REFERENCE TIES

Map Showing Distance And Direction To Other Public Land Survey  
Corners Used For Re-Establishing The Corner



I, Laurence E Johns III RLS 2804, Registered Land Surveyor, hereby certify that the corner location shown on this record was determined by me or under my direction and control, and that this U.S. Public Land Survey Monument Record is correct and complete to the best of my knowledge and belief.

  
 Laurence E Johns III RLS 2804  
 Eagle Ridge Surveying, LLC  
 PO Box 213  
 Wilton, Wisconsin  
 9 October 2013

