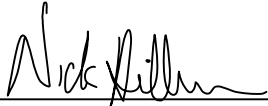


CERTIFICATE

I, Nicholas M. Hillmer, do hereby certify that this document and the data contained herein was prepared by me or under my direct supervision and that I am a duly Licensed Land Surveyor under the laws of the State of Wisconsin.

Dated this 21st day of May, 2013



Nicholas M. Hillmer, P.L.S. 2909
Anderson Engineering of Minnesota, LLC.

CERTIFIED LAND CORNER

History of corner established since Original Government Survey

Fred A. Holden was here in September of 1911. Bryan H. Meyer set a Harrison monument at an occupied fence corner as the best available evidence in 1990.

No. 21802040000

Description of evidence found

On January 24th, 2013, Anderson Engineering of Minnesota located the Harrison monument 0.2 feet above grade and 0.4 feet west of a corner post of a fence that runs north, east, and west.

Description of corner and witness monuments, references and accessories used to perpetuate the original or re-established location of this corner:

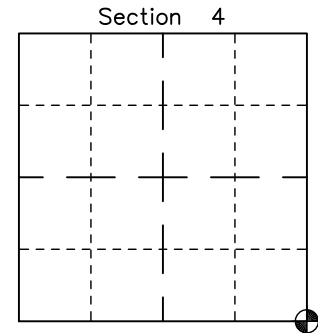
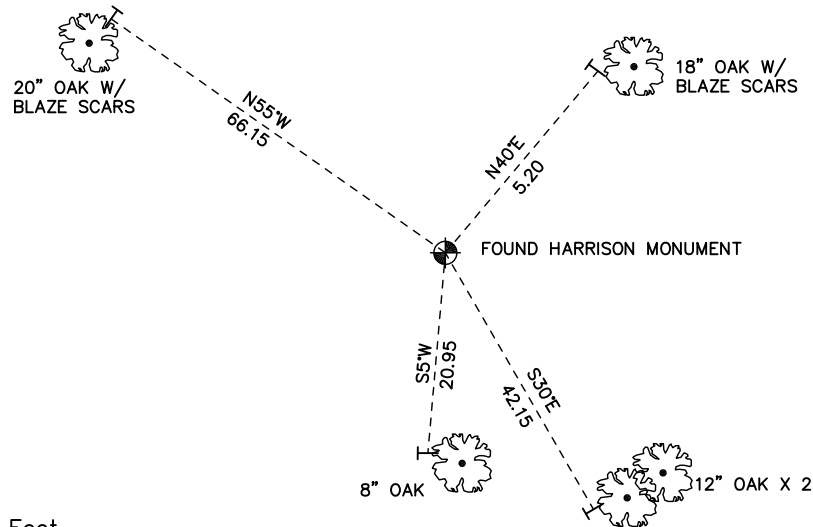
Witnesses to corner location:

Nick Hillmer
Josh Oslund
Dan Greenwald

MONROE COUNTY
COORDINATE SYSTEM
NAD 1983 (2007)

HARRISON MONUMENT
Northing (Y) 421216.44
Easting (X) 678618.38

Base Station - 22 182W
Northing (Y) 408053.25
Easting (X) 679287.00



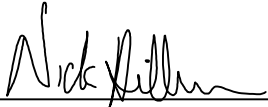
⊙ = LOCATION CORNER
Corner I.D. SE 4
T 18 N R 2 W
Town of Greenfield
Monroe County, WI.

All distances are shown in U.S. Survey Feet.
Ties are to 60D nails set in trees.
Bearings are for tie reference purposes only.
Coordinates were derived from RTK GNSS procedures.

CERTIFICATE

I, Nicholas M. Hillmer, do hereby certify that this document and the data contained herein was prepared by me or under my direct supervision and that I am a duly Licensed Land Surveyor under the laws of the State of Wisconsin.

Dated this 23rd day of May, 2013



Nicholas M. Hillmer, P.L.S. 2909
Anderson Engineering of Minnesota, LLC.

CERTIFIED LAND CORNER

History of corner established since Original Government Survey

Fred A. Holden was here in September of 1911 and calls for an "iron stake." Bryan H. Meyer was here in July of 1983 and talked with Mr. Leroy Frost, a local land owner. Mr. Frost told Meyer he removed a 1 1/2 inch iron pipe when he enlarged his field. Meyer visited Mr. Frost again in 1990 and Mr. Frost showed Meyer the approximate location of where the pipe was. Mr. Frost then showed Meyer the forty corners to the east (old buggy axle) and south (3/4 inch iron rod). Meyer set a Harrison monument by doubling north the bearing and distance of the line that runs along the east line of Section 4. This point is on line with an existing fence to the east and also agrees with Holden's forty corner to the east extremely well.

No. _____
21802042000

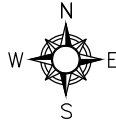
Description of evidence found

On March 12th, 2013, Anderson Engineering of Minnesota located the Harrison monument with the top broke off. The mark is 1.55 feet southeast of the fence corner.

Description of corner and witness monuments, references and accessories used to perpetuate the original or re-established location of this corner:

Witnesses to corner location:

Nick Hillmer
Josh Oslund
Dan Greenwald

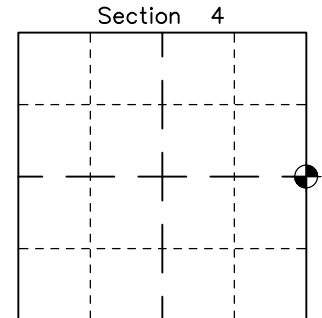
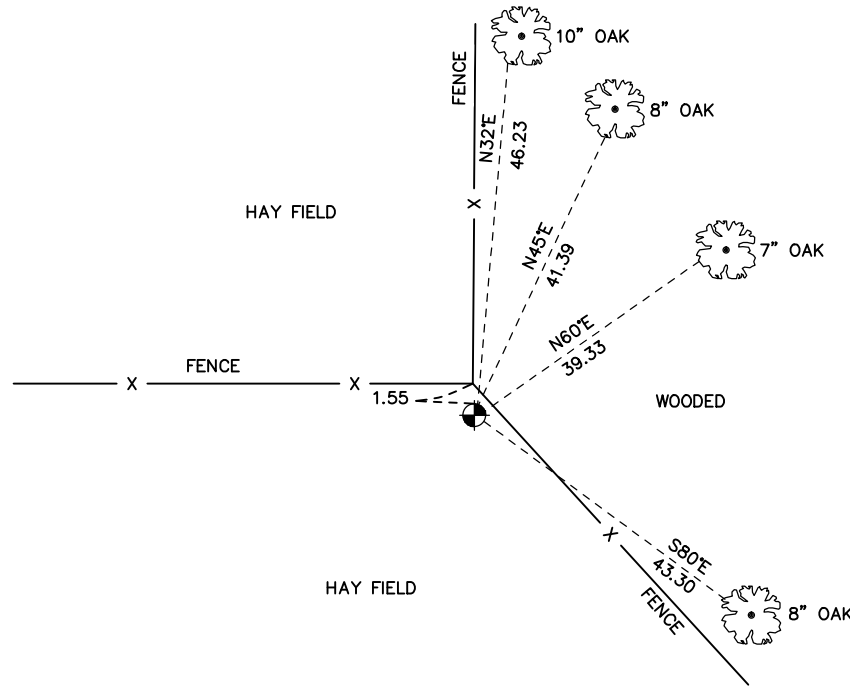


MONROE COUNTY
COORDINATE SYSTEM
NAD 1983 (2007)

HARRISON MONUMENT
Northing (Y) 423842.78
Easting (X) 678554.19

Base Station - 22 182W
Northing (Y) 408053.25
Easting (X) 679287.00

All distances are shown in U.S. Survey Feet.
Ties are to 60D nails set in trees.
Bearings are for tie reference purposes only.
Coordinates were derived from RTK GNSS procedures.

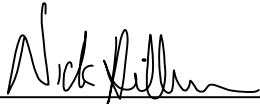


● = LOCATION CORNER
Corner I.D. E 1/4 4
T 18 N R 2 W
Town of Greenfield
Monroe County, WI.

CERTIFICATE

I, Nicholas M. Hillmer, do hereby certify that this document and the data contained herein was prepared by me or under my direct supervision and that I am a duly Licensed Land Surveyor under the laws of the State of Wisconsin.

Dated this 23rd day of May, 2013



Nicholas M. Hillmer, P.L.S. 2909
Anderson Engineering of Minnesota, LLC.

CERTIFIED LAND CORNER

History of corner established since Original Government Survey

No known history of this corner since the government survey.

Description of evidence found

On May 21th, 2013, Anderson Engineering of Minnesota set a Harrison monument at the intersection of a downed fence that runs north and east. This is the best available evidence of the corners original position.

No. _____
21802080000

Description of corner and witness monuments, references and accessories used to perpetuate the original or re-established location of this corner:

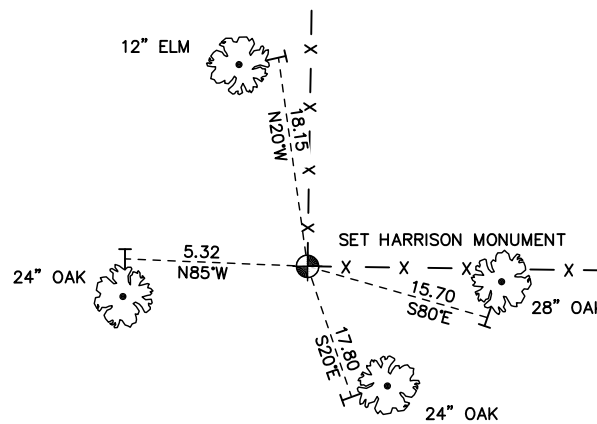
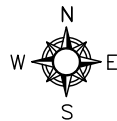
Witnesses to corner location:

Nick Hillmer
Kyle Anderson
Dan Greenwald

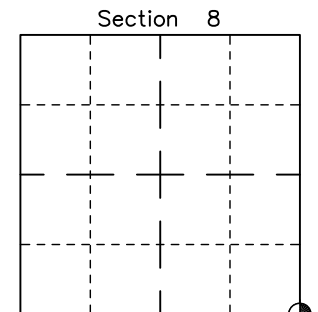
MONROE COUNTY
COORDINATE SYSTEM
NAD 1983 (2007)

HARRISON MONUMENT
Northing (Y) 415855.99
Easting (X) 673329.33

Base Station - 22 182W
Northing (Y) 408053.25
Easting (X) 679287.00



ALL TREES DOUBLE BLAZED.
SIGN AND POST 0.8 FEET SOUTH



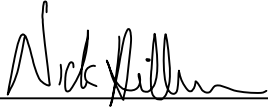
⊗ = LOCATION CORNER
Corner I.D. SE 8
T 18 N R 2 W
Town of Greenfield
Monroe County, WI.

All distances are shown in U.S. Survey Feet.
Ties are to 60D nails set in trees.
Bearings are for tie reference purposes only.
Coordinates were derived from RTK GNSS procedures.

CERTIFICATE

I, Nicholas M. Hillmer, do hereby certify that this document and the data contained herein was prepared by me or under my direct supervision and that I am a duly Licensed Land Surveyor under the laws of the State of Wisconsin.

Dated this 21st day of May, 2013



Nicholas M. Hillmer, P.L.S. 2909
Anderson Engineering of Minnesota, LLC.

CERTIFIED LAND CORNER

History of corner established since Original Government Survey

In 1990 Bryan H. Meyer set a Harrison monument at an occupied fence corner as the best available evidence.

No. 21802092000

Description of evidence found

On January 24th, 2013, Anderson Engineering of Minnesota located the Harrison monument 0.2 feet above grade and 1.0 foot southeast of a witness post with survey marker sign.

Description of corner and witness monuments, references and accessories used to perpetuate the original or re-established location of this corner:

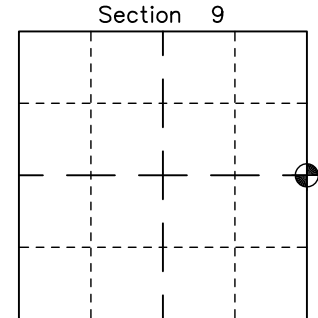
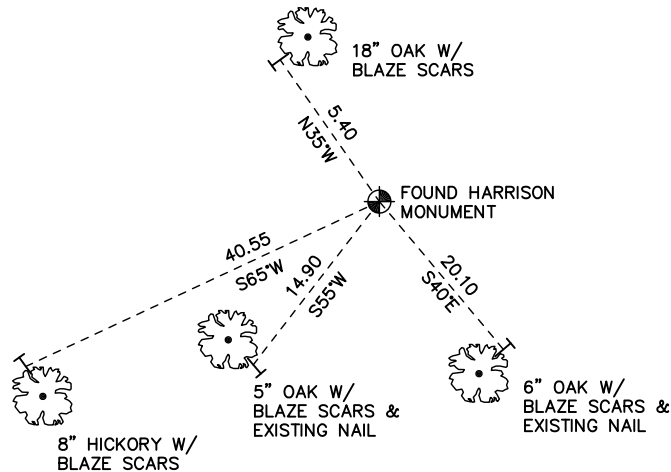
Witnesses to corner location:

Nick Hillmer
Josh Oslund
Dan Greenwald

MONROE COUNTY
COORDINATE SYSTEM
NAD 1983 (2007)

HARRISON MONUMENT
Northing (Y) 418615.48
Easting (X) 678607.21

Base Station - 22 182W
Northing (Y) 408053.25
Easting (X) 679287.00



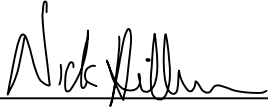
⊙ = LOCATION CORNER
Corner I.D. E 1/4 9
T 18 N R 2 W
Town of Greenfield
Monroe County, WI.

All distances are shown in U.S. Survey Feet.
Ties are to 60D nails set in trees.
Bearings are for tie reference purposes only.
Coordinates were derived from RTK GNSS procedures.

CERTIFICATE

I, Nicholas M. Hillmer, do hereby certify that this document and the data contained herein was prepared by me or under my direct supervision and that I am a duly Licensed Land Surveyor under the laws of the State of Wisconsin.

Dated this 23rd day of May, 2013



Nicholas M. Hillmer, P.L.S. 2909
Anderson Engineering of Minnesota, LLC.

CERTIFIED LAND CORNER

History of corner established since Original Government Survey

In December of 1987, Gary Dechant found the remains of a rotted fence corner. Dechant accepted this as the best available evidence and set a Harrison monument.

Description of evidence found

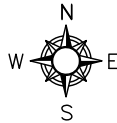
On January 24th, 2013, Anderson Engineering of Minnesota located the Harrison monument 0.3 feet above grade and 0.4 feet south of a witness post with a survey marker sign.

No. 21802160000

Description of corner and witness monuments, references and accessories used to perpetuate the original or re-established location of this corner:

Witnesses to corner location:

Nick Hillmer
Josh Oslund
Dan Greenwald

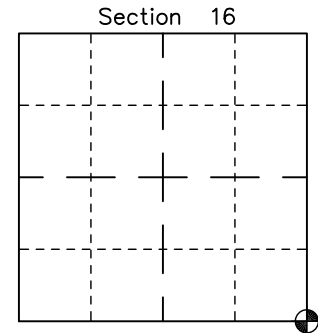
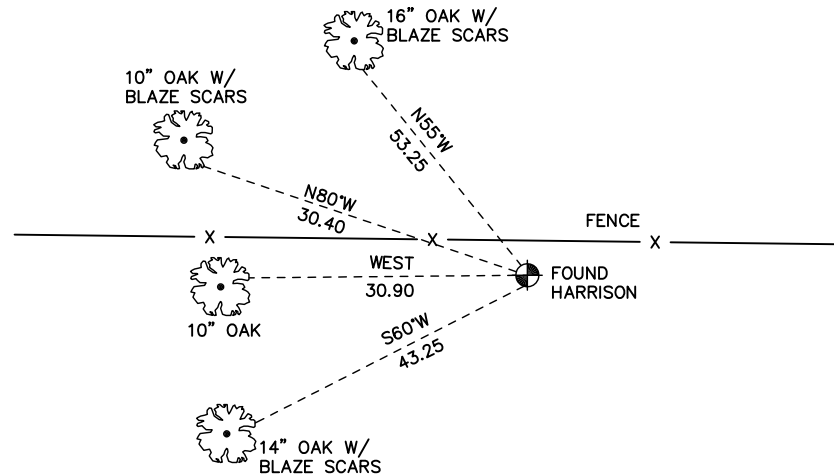


MONROE COUNTY
COORDINATE SYSTEM
NAD 1983 (2007)

HARRISON MONUMENT
Northing (Y) 410706.85
Easting (X) 678646.32

Base Station - 22 182W
Northing (Y) 408053.25
Easting (X) 679287.00

All distances are shown in U.S. Survey Feet.
Ties are to 60D nails set in trees.
Bearings are for tie reference purposes only.
Coordinates were derived from RTK GNSS procedures.

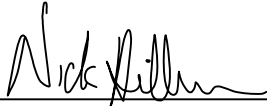


⊙ = LOCATION CORNER
Corner I.D. SE 16
T 18 N R 2 W
Town of Greenfield
Monroe County, WI.

CERTIFICATE

I, Nicholas M. Hillmer, do hereby certify that this document and the data contained herein was prepared by me or under my direct supervision and that I am a duly Licensed Land Surveyor under the laws of the State of Wisconsin.

Dated this 23rd day of May, 2013



Nicholas M. Hillmer, P.L.S. 2909
Anderson Engineering of Minnesota, LLC.

CERTIFIED LAND CORNER

History of corner established since Original Government Survey

Fort McCoy surveyors were here in the 1940's. In December of 1987 Gary Dechant found and accepted a fence corner as the best available evidence. Dechant set a Harrison monument and sign.

No. 21802160020

Description of evidence found

On January 24th, 2013, Anderson Engineering of Minnesota located the Harrison monument 0.3 feet above grade and 0.3 feet south of a witness post with a survey marker sign. Remnants of a fence were found to the west and north. The mark is 1.0 foot east of the apparent fence intersection.

Description of corner and witness monuments, references and accessories used to perpetuate the original or re-established location of this corner:

Witnesses to corner location:

Nick Hillmer
Josh Oslund
Dan Greenwald

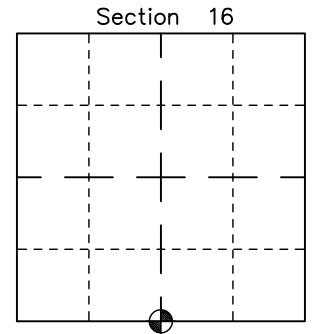
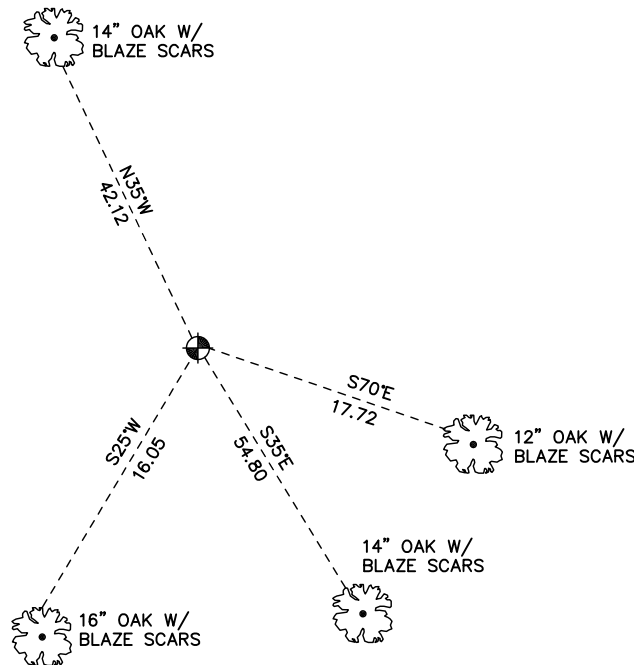


MONROE COUNTY
COORDINATE SYSTEM
NAD 1983 (2007)

HARRISON MONUMENT
Northing (Y) 410683.22
Easting (X) 676052.65

Base Station - 22 182W
Northing (Y) 408053.25
Easting (X) 679287.00

All distances are shown in U.S. Survey Feet.
Ties are to 60D nails set in trees.
Bearings are for tie reference purposes only.
Coordinates were derived from RTK GNSS procedures.

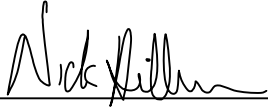


● = LOCATION CORNER
Corner I.D. S 1/4 16
T 18 N R 2 W
Town of Greenfield
Monroe County, WI.

CERTIFICATE

I, Nicholas M. Hillmer, do hereby certify that this document and the data contained herein was prepared by me or under my direct supervision and that I am a duly Licensed Land Surveyor under the laws of the State of Wisconsin.

Dated this 23rd day of May, 2013



Nicholas M. Hillmer, P.L.S. 2909
Anderson Engineering of Minnesota, LLC.

CERTIFIED LAND CORNER

History of corner established since Original Government Survey

O.R. Dahl was near this location in November of 1868. In October of 1990 Bryan Meyer set a Harrison monument on line between the northeast and southeast corners of Section 16 and by doubling north the distance from the southeast corner of Section 16 to the centerline of a town road (Bittersweet Lane). Town Road records from 1871 indicate that Bittersweet Lane is to run along the north line of the SE 1/4-SE 1/4 of Section 16.

Description of evidence found

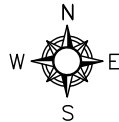
On January 24th, 2013, Anderson Engineering of Minnesota located the Harrison monument 0.1 feet below grade. The monument is 25+/- feet west of the centerline of the road on a side slope.

No. 21802162000

Description of corner and witness monuments, references and accessories used to perpetuate the original or re-established location of this corner:

Witnesses to corner location:

Nick Hillmer
Josh Oslund
Dan Greenwald

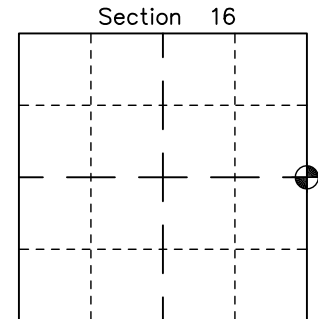
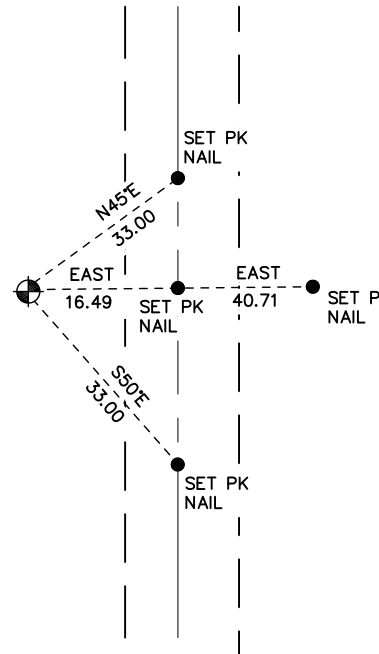


MONROE COUNTY
COORDINATE SYSTEM
NAD 1983 (2007)

HARRISON MONUMENT
Northing (Y) 413364.99
Easting (X) 678644.81

Base Station - 22 182W
Northing (Y) 408053.25
Easting (X) 679287.00

All distances are shown in U.S. Survey Feet.
Bearings are for tie reference purposes only.
Coordinates were derived from RTK GNSS procedures.

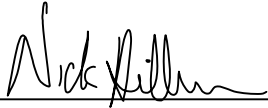


● = LOCATION CORNER
Corner I.D. E 1/4 16
T 18 N R 2 W
Town of Greenfield
Monroe County, WI.

CERTIFICATE

I, Nicholas M. Hillmer, do hereby certify that this document and the data contained herein was prepared by me or under my direct supervision and that I am a duly Licensed Land Surveyor under the laws of the State of Wisconsin.

Dated this 23rd day of May, 2013



Nicholas M. Hillmer, P.L.S. 2909
Anderson Engineering of Minnesota, LLC.

CERTIFIED LAND CORNER

History of corner established since Original Government Survey

Fred Holden was at this location in January of 1901. In December of 1987 Gary Dechant set a Harrison monument by using the fence corner as the best available evidence.

Description of evidence found

On November 1st, 2012, Anderson Engineering of Minnesota located the Harrison monument 0.3 feet above grade and 1.0 foot south of a witness post with a survey marker sign.

No. 21802170000

Description of corner and witness monuments, references and accessories used to perpetuate the original or re-established location of this corner:

Witnesses to corner location:

Nick Hillmer
Josh Oslund
Dan Greenwald

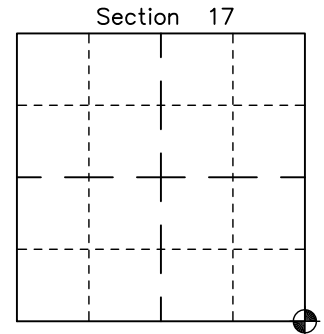
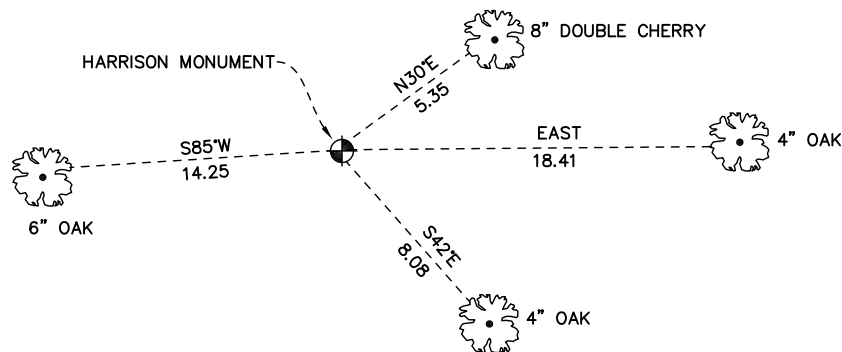


MONROE COUNTY
COORDINATE SYSTEM
NAD 1983 (2007)

HARRISON MONUMENT
Northing (Y) 410666.48
Easting (X) 673437.74

Base Station - 22 182W
Northing (Y) 408053.25
Easting (X) 679287.00

All distances are shown in U.S. Survey Feet.
Ties are to 60D nails set in trees.
Bearings are for tie reference purposes only.
Coordinates were derived from RTK GNSS procedures.

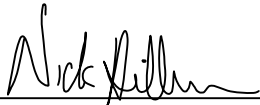


☉ = LOCATION CORNER
Corner I.D. SE 17
T 18 N R 2 W
Town of Greenfield
Monroe County, WI.

CERTIFICATE

I, Nicholas M. Hillmer, do hereby certify that this document and the data contained herein was prepared by me or under my direct supervision and that I am a duly Licensed Land Surveyor under the laws of the State of Wisconsin.

Dated this 23rd day of May, 2013



Nicholas M. Hillmer, P.L.S. 2909
Anderson Engineering of Minnesota, LLC.

CERTIFIED LAND CORNER

History of corner established since Original Government Survey

No known history of this corner since the government survey.

Description of evidence found

On May 21th, 2013, Anderson Engineering of Minnesota set a Harrison monument at the tee of a downed, north-south barbed wire fence with a downed barbed wire fence that intersects it from the east. This was the best remaining evidence of the corners original position.

No. _____
21802172000

Description of corner and witness monuments, references and accessories used to perpetuate the original or re-established location of this corner:

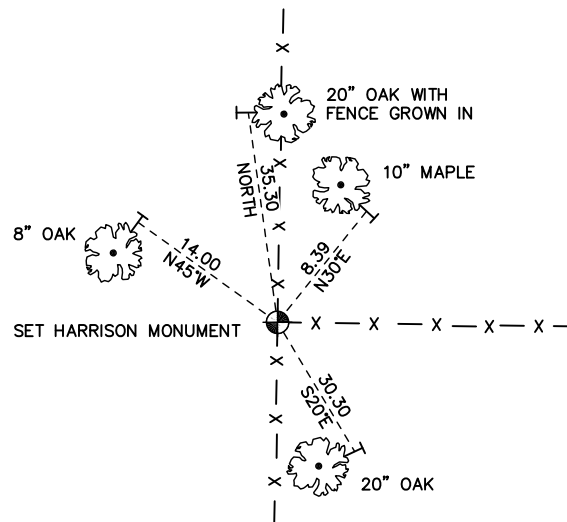
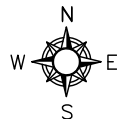
Witnesses to corner location:

Nick Hillmer
Kyle Anderson
Dan Greenwald

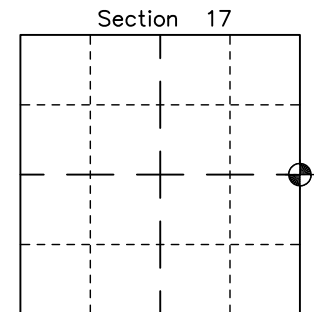
MONROE COUNTY
COORDINATE SYSTEM
NAD 1983 (2007)

HARRISON MONUMENT
Northing (Y) 413265.45
Easting (X) 673357.89

Base Station - 22 182W
Northing (Y) 408053.25
Easting (X) 679287.00



ALL TREES DOUBLE BLAZED.
SIGN AND POST 1.0 FOOT SOUTH



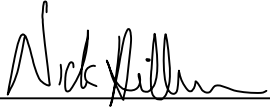
● = LOCATION CORNER
Corner I.D. E 1/4 17
T 18 N R 2 W
Town of Greenfield
Monroe County, WI.

All distances are shown in U.S. Survey Feet.
Ties are to 60D nails set in trees.
Bearings are for tie reference purposes only.
Coordinates were derived from RTK GNSS procedures.

CERTIFICATE

I, Nicholas M. Hillmer, do hereby certify that this document and the data contained herein was prepared by me or under my direct supervision and that I am a duly Licensed Land Surveyor under the laws of the State of Wisconsin.

Dated this 23rd day of May, 2013



Nicholas M. Hillmer, P.L.S. 2909
Anderson Engineering of Minnesota, LLC.

CERTIFIED LAND CORNER

History of corner established since Original Government Survey

In December of 1987 Gary Dechant set a Harrison monument by single proportionate measurement.

No. 21802202000

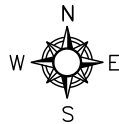
Description of evidence found

On November 1st, 2012, Anderson Engineering of Minnesota located the Harrison monument flush with the ground and 1.0 foot south of a witness post with a survey marker sign.

Description of corner and witness monuments, references and accessories used to perpetuate the original or re-established location of this corner:

Witnesses to corner location:

Nick Hillmer
Josh Oslund
Dan Greenwald

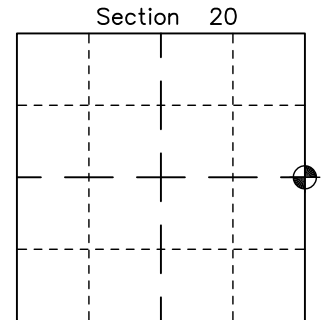
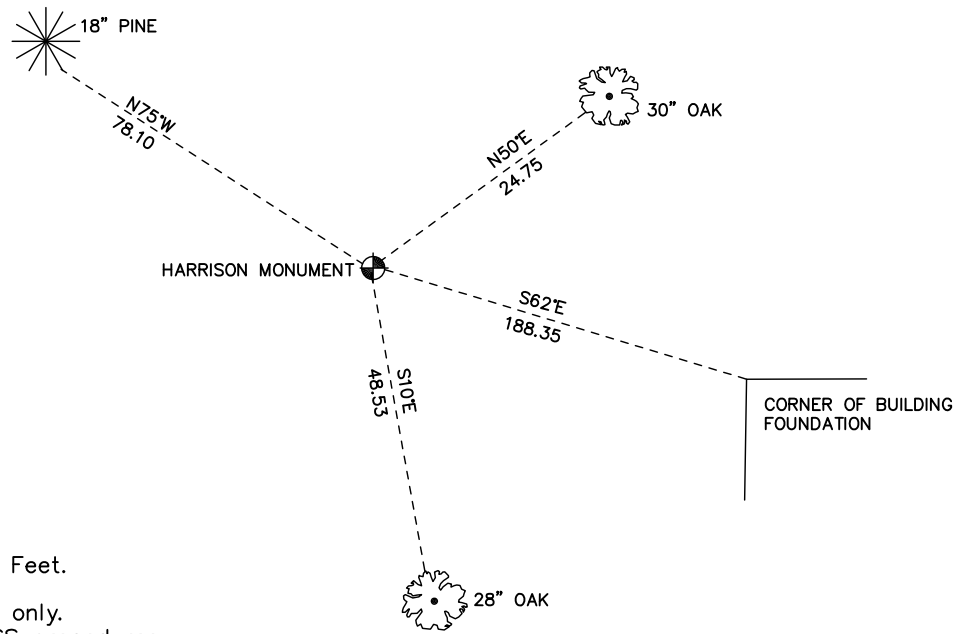


MONROE COUNTY
COORDINATE SYSTEM
NAD 1983 (2007)

HARRISON MONUMENT
Northing (Y) 408055.79
Easting (X) 673440.57

Base Station - 22 182W
Northing (Y) 408053.25
Easting (X) 679287.00

All distances are shown in U.S. Survey Feet.
Ties are to 60D nails set in trees.
Bearings are for tie reference purposes only.
Coordinates were derived from RTK GNSS procedures.



● = LOCATION CORNER
Corner I.D. E 1/4 20
T 18 N R 2 W
Town of Greenfield
Monroe County, WI.

CERTIFICATE

I, Nicholas M. Hillmer, do hereby certify that this document and the data contained herein was prepared by me or under my direct supervision and that I am a duly Licensed Land Surveyor under the laws of the State of Wisconsin.

Dated this 21st day of May, 2013

Nicholas M. Hillmer, P.L.S. 2909
Anderson Engineering of Minnesota, LLC.

CERTIFIED LAND CORNER

History of corner established since Original Government Survey

In December of 1987 Gary Dechant set a Harrison monument by using single proportionate measurement.

No. 21802210020

Description of evidence found

On August 30th, 2012, Anderson Engineering of Minnesota located the Harrison monument flush with the ground and 0.3 feet east of a metal witness post with survey marker sign.

Description of corner and witness monuments, references and accessories used to perpetuate the original or re-established location of this corner:

Witnesses to corner location:

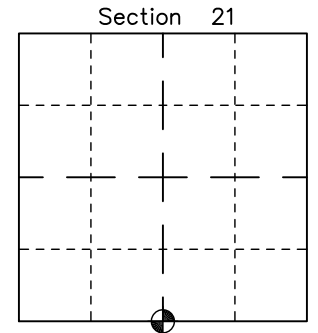
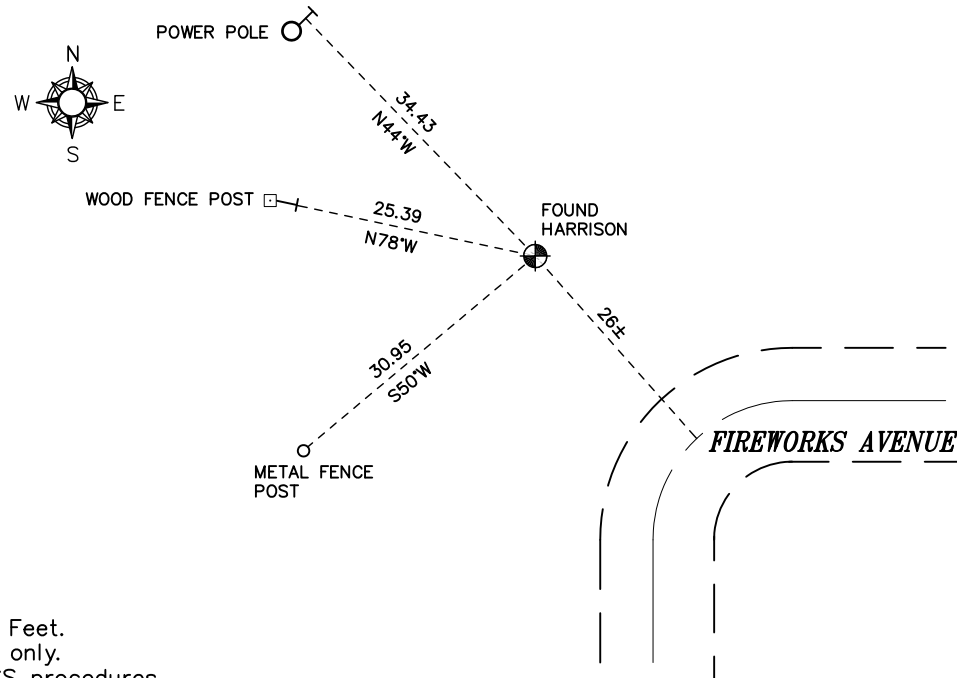
Nick Hillmer
Josh Oslund
Dan Greenwald

MONROE COUNTY
COORDINATE SYSTEM
NAD 1983 (2007)

HARRISON MONUMENT
Northing (Y) 405445.07
Easting (X) 676054.90

Base Station - 22 182W
Northing (Y) 408053.25
Easting (X) 679287.00

All distances are shown in U.S. Survey Feet.
Bearings are for tie reference purposes only.
Coordinates were derived from RTK GNSS procedures.

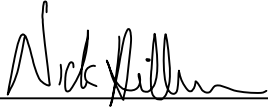


● = LOCATION CORNER
Corner I.D. S 1/4 21
T 18 N R 2 W
Town of Greenfield
Monroe County, WI.

CERTIFICATE

I, Nicholas M. Hillmer, do hereby certify that this document and the data contained herein was prepared by me or under my direct supervision and that I am a duly Licensed Land Surveyor under the laws of the State of Wisconsin.

Dated this 23rd day of May, 2013



Nicholas M. Hillmer, P.L.S. 2909
Anderson Engineering of Minnesota, LLC.

CERTIFIED LAND CORNER

History of corner established since Original Government Survey

Duane Marten set an iron bar at this location in July of 1972. In June of 1979 William Jung found the iron bar and replaced it with a Harrison monument.

No. 21802212000

Description of evidence found

On January 24th, 2012, Anderson Engineering of Minnesota located the Harrison monument 0.2 feet below grade in the center of the intersection of Eden Avenue and Edgewater Road.

Description of corner and witness monuments, references and accessories used to perpetuate the original or re-established location of this corner:

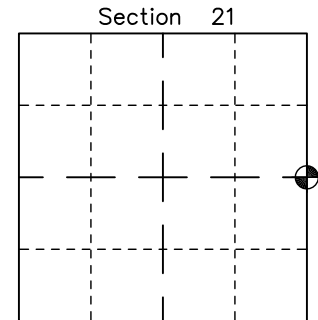
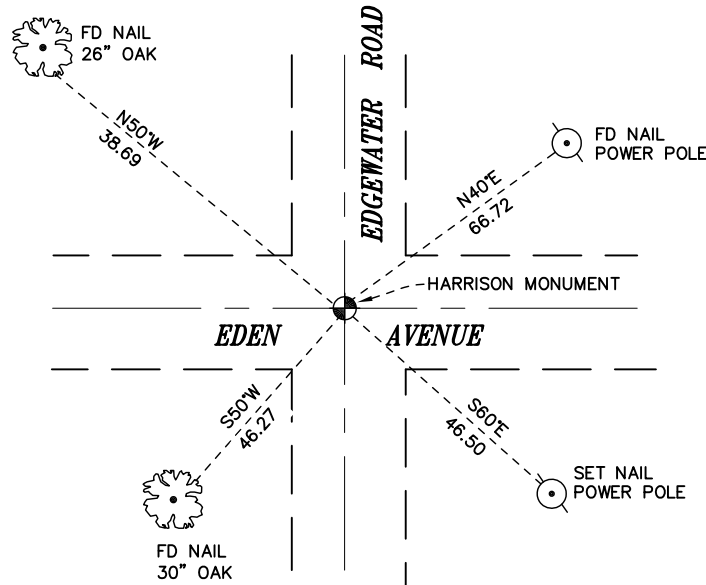
Witnesses to corner location:

Nick Hillmer
Josh Oslund
Dan Greenwald

MONROE COUNTY
COORDINATE SYSTEM
NAD 1983 (2007)

HARRISON MONUMENT
Northing (Y) 408081.37
Easting (X) 678653.11

Base Station - 22 182W
Northing (Y) 408053.25
Easting (X) 679287.00



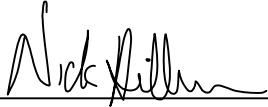
● = LOCATION CORNER
Corner I.D. E 1/4 21
T 18 N R 2 W
Town of Greenfield
Monroe County, WI.

All distances are shown in U.S. Survey Feet.
Ties are to 60D nails.
Bearings are for tie reference purposes only.
Coordinates were derived from RTK GNSS procedures.

CERTIFICATE

I, Nicholas M. Hillmer, do hereby certify that this document and the data contained herein was prepared by me or under my direct supervision and that I am a duly Licensed Land Surveyor under the laws of the State of Wisconsin.

Dated this 23rd day of May, 2013



Nicholas M. Hillmer, P.L.S. 2909
Anderson Engineering of Minnesota, LLC.

CERTIFIED LAND CORNER

History of corner established since Original Government Survey

Fred Holden was here in January of 1901. In August of 1988 Gary Dechant set a Harrison monument half way between section corners and in an east-west fence line.

No. 21802260020

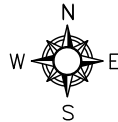
Description of evidence found

On February 21st, 2013, Anderson Engineering of Minnesota located the Harrison monument sticking up 0.4 foot in between two fences.

Description of corner and witness monuments, references and accessories used to perpetuate the original or re-established location of this corner:

Witnesses to corner location:

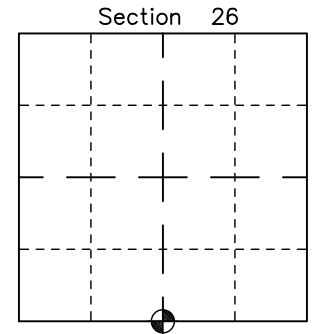
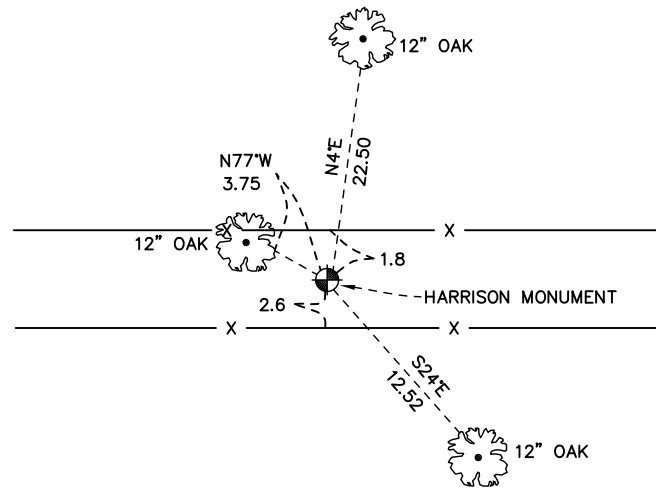
Nick Hillmer
Josh Oslund
Dan Greenwald



MONROE COUNTY
COORDINATE SYSTEM
NAD 1983 (2007)

HARRISON MONUMENT
Northing (Y) 400172.88
Easting (X) 686444.50

Base Station - 22 182W
Northing (Y) 408053.25
Easting (X) 679287.00



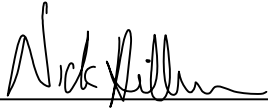
● = LOCATION CORNER
Corner I.D. S 1/4 26
T 18 N R 2 W
Town of Greenfield
Monroe County, WI.

All distances are shown in U.S. Survey Feet.
Ties are to 60D nails set in trees.
Bearings are for tie reference purposes only.
Coordinates were derived from RTK GNSS procedures.

CERTIFICATE

I, Nicholas M. Hillmer, do hereby certify that this document and the data contained herein was prepared by me or under my direct supervision and that I am a duly Licensed Land Surveyor under the laws of the State of Wisconsin.

Dated this 23rd day of May, 2013



Nicholas M. Hillmer, P.L.S. 2909
Anderson Engineering of Minnesota, LLC.

CERTIFIED LAND CORNER

History of corner established since Original Government Survey

Webster Kenyon was at this location in June of 1883. In August of 1991 Bryan Meyer set a Harrison monument by using single proportionate measurements from the southwest corner and southeast corner of Section 28.

No. 21802280020

Description of evidence found

On January 21st, 2013, Anderson Engineering of Minnesota located the Harrison monument 0.4 foot below the ground surface. A witness post with survey marker sign was also present.

Description of corner and witness monuments, references and accessories used to perpetuate the original or re-established location of this corner:

Witnesses to corner location:

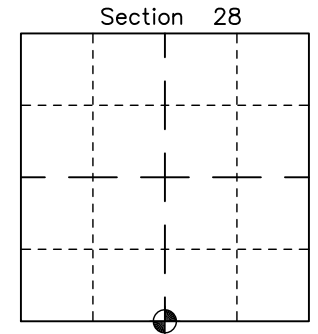
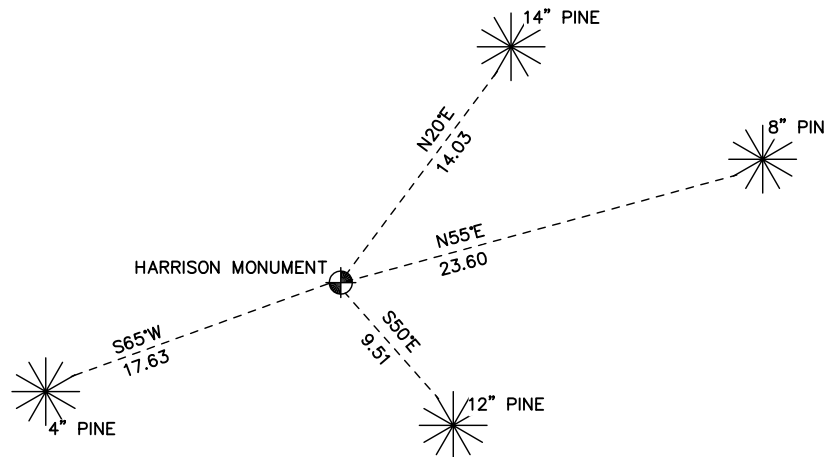
Nick Hillmer
Josh Oslund
Dan Greenwald



MONROE COUNTY
COORDINATE SYSTEM
NAD 1983 (2007)

HARRISON MONUMENT
Northing (Y) 400170.05
Easting (X) 676094.13

Base Station - 22 182W
Northing (Y) 408053.25
Easting (X) 679287.00



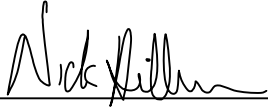
⊕ = LOCATION CORNER
Corner I.D. S 1/4 28
T 18 N R 2 W
Town of Greenfield
Monroe County, WI.

All distances are shown in U.S. Survey Feet.
Ties are to 60D nails set in trees.
Bearings are for tie reference purposes only.
Coordinates were derived from RTK GNSS procedures.

CERTIFICATE

I, Nicholas M. Hillmer, do hereby certify that this document and the data contained herein was prepared by me or under my direct supervision and that I am a duly Licensed Land Surveyor under the laws of the State of Wisconsin.

Dated this 23rd day of May, 2013



Nicholas M. Hillmer, P.L.S. 2909
Anderson Engineering of Minnesota, LLC.

CERTIFIED LAND CORNER

History of corner established since Original Government Survey

The 1945 McCoy boundary notes show a corner at this location. In July of 1979 William Jung set a P.K nail equidistant between the section corners and on line with the fence line to the north. In November of 1997 Douglas Malliet set a small gauge railroad spike using ties taken prior to road construction.

No. 21802282000

Description of evidence found

On January 24th, 2013, Anderson Engineering of Minnesota located the small gauge railroad spike (shank only, no head) approximately 6.5 feet north of the centerline of State Highway 21.

Description of corner and witness monuments, references and accessories used to perpetuate the original or re-established location of this corner:

Witnesses to corner location:

Nick Hillmer
Josh Oslund
Dan Greenwald



MONROE COUNTY
COORDINATE SYSTEM
NAD 1983 (2007)

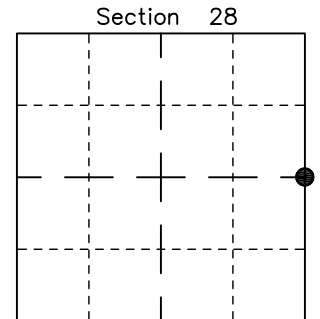
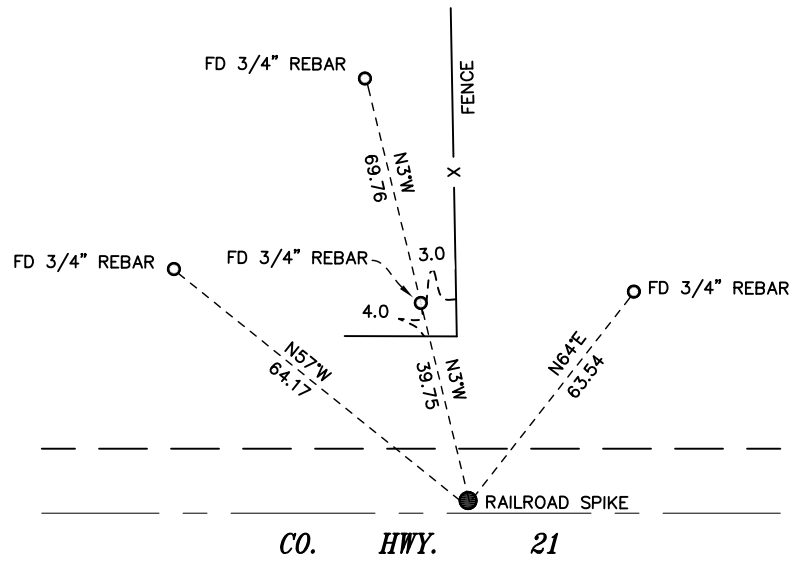
RAILROAD SPIKE

Northing (Y) 402805.52
Easting (X) 678671.56

Base Station - 22 182W

Northing (Y) 408053.25
Easting (X) 679287.00

All distances are shown in U.S. Survey Feet.
Bearings are for tie reference purposes only.
Coordinates were derived from RTK GNSS procedures.

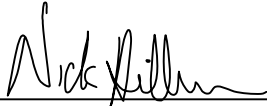


● = LOCATION CORNER
Corner I.D. E 1/4 28
T 18 N R 2 W
Town of Greenfield
Monroe County, WI.

CERTIFICATE

I, Nicholas M. Hillmer, do hereby certify that this document and the data contained herein was prepared by me or under my direct supervision and that I am a duly Licensed Land Surveyor under the laws of the State of Wisconsin.

Dated this 23rd day of May, 2013



Nicholas M. Hillmer, P.L.S. 2909
Anderson Engineering of Minnesota, LLC.

CERTIFIED LAND CORNER

History of corner established since Original Government Survey

Schroeder found this corner in place in June of 1883. In 1946 surveyors from Camp McCoy found an original bearing tree stump and re-established the corner, setting an iron pipe at the true corner. William Jung found this pipe on February 19, 1982, took ties, and recorded a tie sheet in the county surveyors files. In 1982 E.O.D. personnel from Fort McCoy destroyed the section corner when they blew a duck pond hole. In 1983 Jung went back out and found the pipe blown over and buried by the blast. Jung reset the pipe at its former location.

Description of evidence found

On February 22nd, 2013, Anderson Engineering of Minnesota located the 2 3/8 inch pipe flush with the ground and 0.3 foot west of a fence post.

No. 21802290000

Description of corner and witness monuments, references and accessories used to perpetuate the original or re-established location of this corner:

Witnesses to corner location:

Nick Hillmer
Josh Oslund
Dan Greenwald

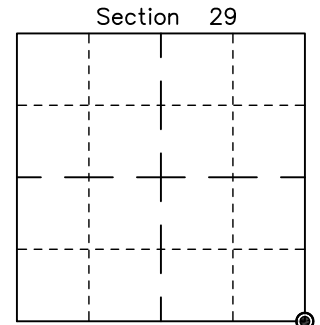
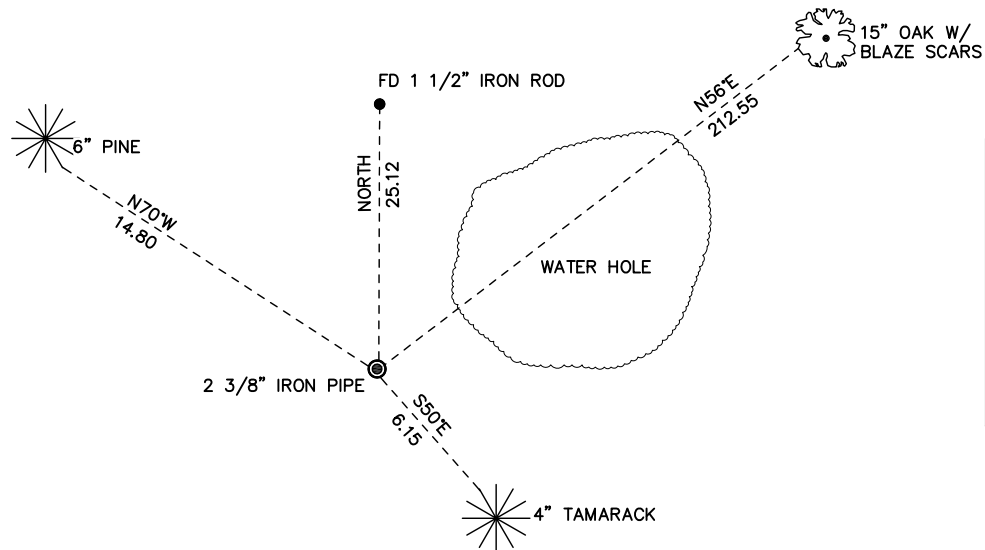


MONROE COUNTY
COORDINATE SYSTEM
NAD 1983 (2007)

2 3/8 INCH PIPE
Northing (Y) 400174.89
Easting (X) 673479.11

Base Station - 22 182W
Northing (Y) 408053.25
Easting (X) 679287.00

All distances are shown in U.S. Survey Feet.
Ties are to 60D nails set in trees.
Bearings are for tie reference purposes only.
Coordinates were derived from RTK GNSS procedures.



⊙ = LOCATION CORNER
Corner I.D. SE 29
T 18 N R 2 W
Town of Greenfield
Monroe County, WI.

CERTIFICATE

I, Nicholas M. Hillmer, do hereby certify that this document and the data contained herein was prepared by me or under my direct supervision and that I am a duly Licensed Land Surveyor under the laws of the State of Wisconsin.

Dated this 23rd day of May, 2013

Nicholas M. Hillmer, P.L.S. 2909
Anderson Engineering of Minnesota, LLC.

CERTIFIED LAND CORNER

History of corner established since Original Government Survey

No known history of this corner since the government survey.

Description of evidence found

On May 21th, 2013, Anderson Engineering of Minnesota set a Harrison monument at a proportioned distance on the township line between the southwest corner of Section 31 and the south quarter corner of Section 34.

No. _____
21802330000

Description of corner and witness monuments, references and accessories used to perpetuate the original or re-established location of this corner:

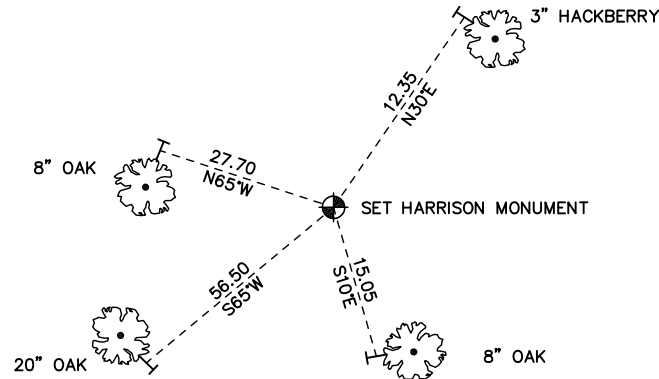
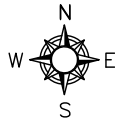
Witnesses to corner location:

Nick Hillmer
Kyle Anderson
Dan Greenwald

MONROE COUNTY
COORDINATE SYSTEM
NAD 1983 (2007)

HARRISON MONUMENT
Northing (Y) 394783.04
Easting (X) 678603.53

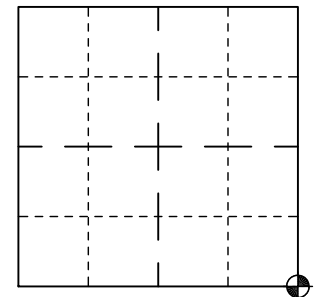
Base Station - 22 182W
Northing (Y) 408053.25
Easting (X) 679287.00



ALL TREES DOUBLE BLAZED.
SIGN AND POST 1.0 FOOT SOUTH

All distances are shown in U.S. Survey Feet.
Ties are to 60D nails set in trees.
Bearings are for tie reference purposes only.
Coordinates were derived from RTK GNSS procedures.

Section 33

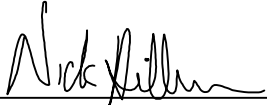


☉ = LOCATION CORNER
Corner I.D. SE 33
T 18 N R 2 W
Town of Greenfield
Monroe County, WI.

CERTIFICATE

I, Nicholas M. Hillmer, do hereby certify that this document and the data contained herein was prepared by me or under my direct supervision and that I am a duly Licensed Land Surveyor under the laws of the State of Wisconsin.

Dated this 23rd day of May, 2013



Nicholas M. Hillmer, P.L.S. 2909
Anderson Engineering of Minnesota, LLC.

CERTIFIED LAND CORNER

History of corner established since Original Government Survey

No know history of this corner since the government survey.

Description of evidence found

On May 21th, 2013, Anderson Engineering of Minnesota set a Harrison monument midway and online in between the northeast and southeast corners of Section 33.

No. 21802332000

Description of corner and witness monuments, references and accessories used to perpetuate the original or re-established location of this corner:

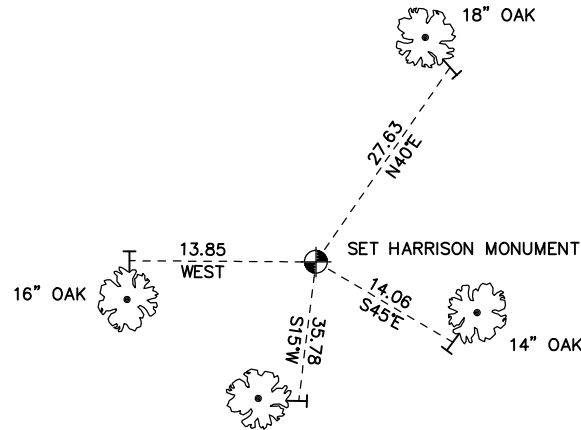
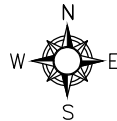
Witnesses to corner location:

Nick Hillmer
Kyle Anderson
Dan Greenwald

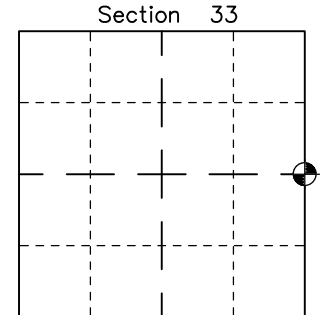
MONROE COUNTY
COORDINATE SYSTEM
NAD 1983 (2007)

HARRISON MONUMENT
Northing (Y) 397474.34
Easting (X) 678656.31

Base Station - 22 182W
Northing (Y) 408053.25
Easting (X) 679287.00



ALL TREES DOUBLE BLAZED.
SIGN AND POST 1.3 FEET SOUTH



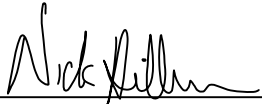
● = LOCATION CORNER
Corner I.D. E 1/4 33
T 18 N R 2 W
Town of Greenfield
Monroe County, WI.

All distances are shown in U.S. Survey Feet.
Ties are to 60D nails set in trees.
Bearings are for tie reference purposes only.
Coordinates were derived from RTK GNSS procedures.

CERTIFICATE

I, Nicholas M. Hillmer, do hereby certify that this document and the data contained herein was prepared by me or under my direct supervision and that I am a duly Licensed Land Surveyor under the laws of the State of Wisconsin.

Dated this 23rd day of May, 2013



Nicholas M. Hillmer, P.L.S. 2909
Anderson Engineering of Minnesota, LLC.

CERTIFIED LAND CORNER

History of corner established since Original Government Survey

Fred Holden was here in January of 1901. In August of 1988, Gary Dechant set a Harrison monument half way between the south quarter of Section 35 and the south quarter of Section 34 and in line with projected east-west fence from the west. Dechant found remains of rusted north-south fence while digging for the monument.

Description of evidence found

On September 26th, 2012, Anderson Engineering of Minnesota did not find the Harrison due to earth work in the area. On May 8th 2013, Anderson Engineering of Minnesota set a new Harrison monument 22 feet west from the only remaining stable tie, a 3/4 inch solid bar. The position agrees with distances per the 1988 section breakdown.

No. _____
21802340000

Description of corner and witness monuments, references and accessories used to perpetuate the original or re-established location of this corner:

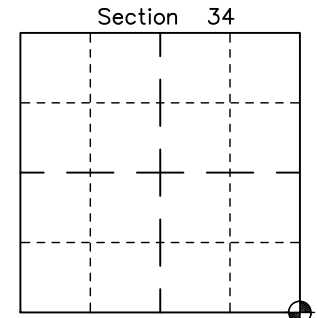
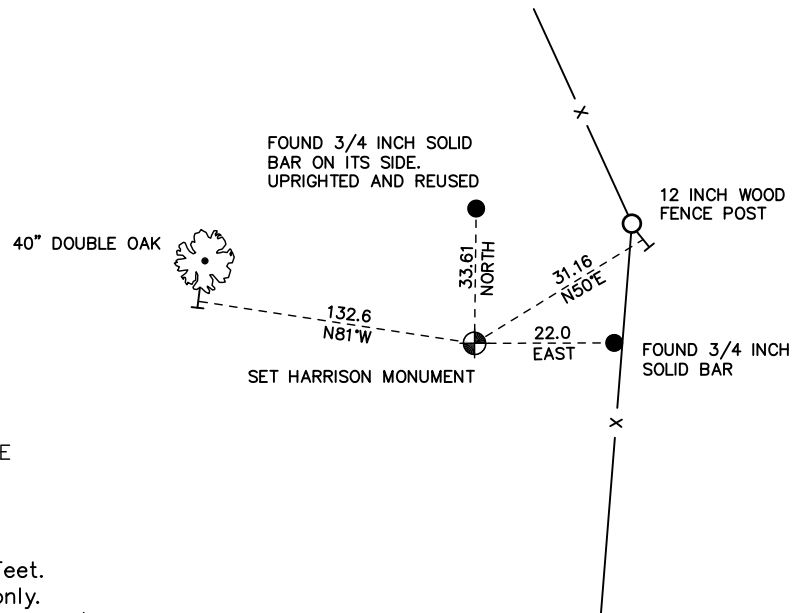
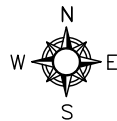
Witnesses to corner location:

Nick Hillmer
Kyle Anderson
Dan Greenwald

MONROE COUNTY
COORDINATE SYSTEM
NAD 1983 (2007)

HARRISON MONUMENT
Northing (Y) 394860.22
Easting (X) 683865.61

Base Station - 22 182W
Northing (Y) 408053.25
Easting (X) 679287.00



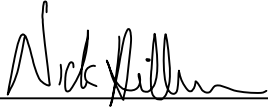
⊕ = LOCATION CORNER
Corner I.D. SE 34
T 18 N R 2 W
Town of Greenfield
Monroe County, WI.

All distances are shown in U.S. Survey Feet.
Bearings are for tie reference purposes only.
Coordinates were derived from RTK GNSS procedures.

CERTIFICATE

I, Nicholas M. Hillmer, do hereby certify that this document and the data contained herein was prepared by me or under my direct supervision and that I am a duly Licensed Land Surveyor under the laws of the State of Wisconsin.

Dated this 23rd day of May, 2013



Nicholas M. Hillmer, P.L.S. 2909
Anderson Engineering of Minnesota, LLC.

CERTIFIED LAND CORNER

History of corner established since Original Government Survey

Fred Holden was here in January of 1901. In August of 1988, Gary Dechant set a Harrison monument half way between section corners and on line with the projected north-south fence from the north.

Description of evidence found

On February 22nd, 2013, Anderson Engineering of Minnesota located the Harrison monument 0.4 feet above grade and 0.8 feet northeast of a sign.

No. 21802342000

Description of corner and witness monuments, references and accessories used to perpetuate the original or re-established location of this corner:

Witnesses to corner location:

Nick Hillmer
Josh Oslund
Dan Greenwald

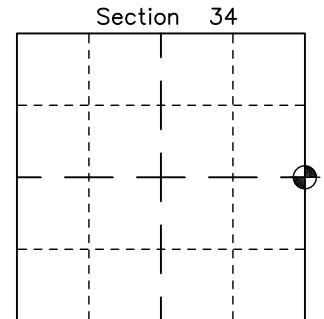
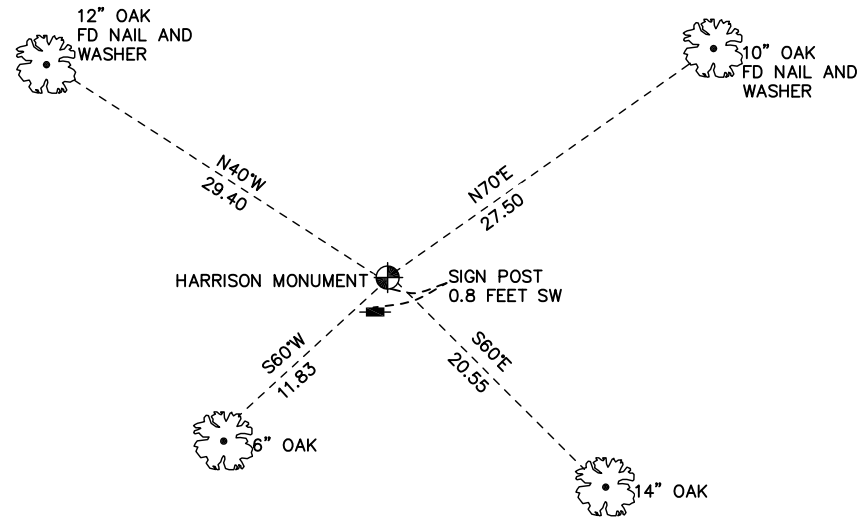


MONROE COUNTY
COORDINATE SYSTEM
NAD 1983 (2007)

HARRISON MONUMENT
Northing (Y) 397494.09
Easting (X) 683830.23

Base Station - 22 182W
Northing (Y) 408053.25
Easting (X) 679287.00

All distances are shown in U.S. Survey Feet.
Ties are to 60D nails set in trees.
Bearings are for tie reference purposes only.
Coordinates were derived from RTK GNSS procedures.

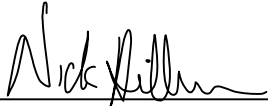


⊙ = LOCATION CORNER
Corner I.D. E 1/4 34
T 18 N R 2 W
Town of Greenfield
Monroe County, WI.

CERTIFICATE

I, Nicholas M. Hillmer, do hereby certify that this document and the data contained herein was prepared by me or under my direct supervision and that I am a duly Licensed Land Surveyor under the laws of the State of Wisconsin.

Dated this 23rd day of May, 2013



Nicholas M. Hillmer, P.L.S. 2909
Anderson Engineering of Minnesota, LLC.

CERTIFIED LAND CORNER

History of corner established since Original Government Survey

Kenyon was here in February of 1866. Schroeder was here in May of 1883. Fred Holden was here in January of 1901. Ray Hurlburt was here in November of 1940 and set an auto steering post at the corner. In November of 1981 Harley Sime found and accepted Hurlburt's auto steering post as the corner.

No. 21802350020

Description of evidence found

On February 21st, 2013, Anderson Engineering of Minnesota located the auto steering post 2.0 feet north of a fence corner in debris of a fallen tree. The monument is halfway up a ridge line between two draws.

Description of corner and witness monuments, references and accessories used to perpetuate the original or re-established location of this corner:

Witnesses to corner location:

Nick Hillmer
Josh Oslund
Dan Greenwald

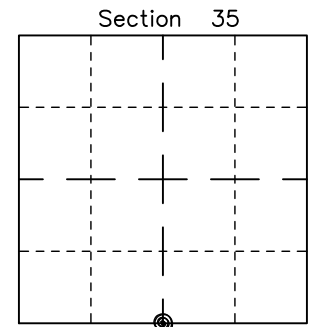
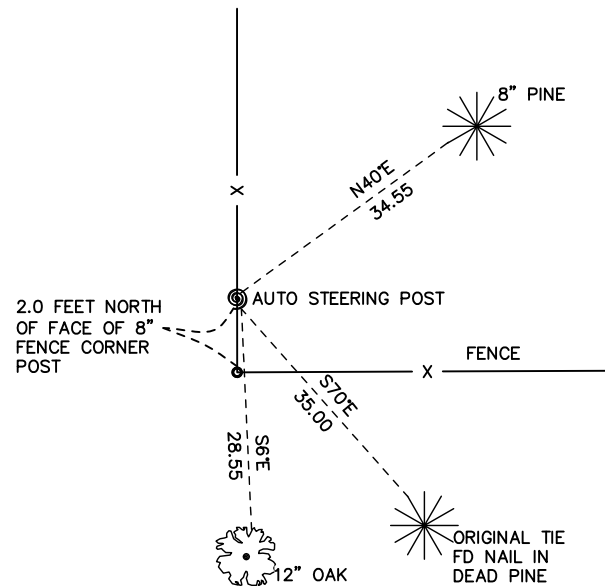


MONROE COUNTY
COORDINATE SYSTEM
NAD 1983 (2007)

AUTO STEERING POST
Northing (Y) 394885.11
Easting (X) 686488.36

Base Station - 22 182W
Northing (Y) 408053.25
Easting (X) 679287.00

All distances are shown in U.S. Survey Feet.
Ties are to 60D nails set in trees.
Bearings are for tie reference purposes only.
Coordinates were derived from RTK GNSS procedures.

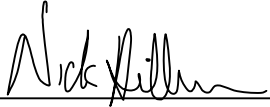


= LOCATION CORNER
Corner I.D. S 1/4 35
T 18 N R 2 W
Town of Greenfield
Monroe County, WI.

CERTIFICATE

I, Nicholas M. Hillmer, do hereby certify that this document and the data contained herein was prepared by me or under my direct supervision and that I am a duly Licensed Land Surveyor under the laws of the State of Wisconsin.

Dated this 23rd day of May, 2013



Nicholas M. Hillmer, P.L.S. 2909
Anderson Engineering of Minnesota, LLC.

CERTIFIED LAND CORNER

History of corner established since Original Government Survey

In June of 1976 Harley Sime set a Harrison monument 2.5 feet below the road using single proportion measurements between the southeast and northeast corners of Section 35. The recorded section breakdown by Gary Dechant dated August 3, 1988, shows a found monument at this location.

Description of evidence found

On September 26th, 2012, Anderson Engineering of Minnesota located the Harrison monument 1.3 feet below the road surface. The top of the monument is no longer in place.

No. 21802352000

Description of corner and witness monuments, references and accessories used to perpetuate the original or re-established location of this corner:

Witnesses to corner location:

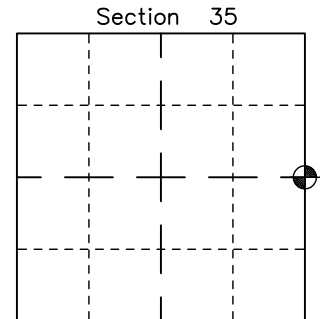
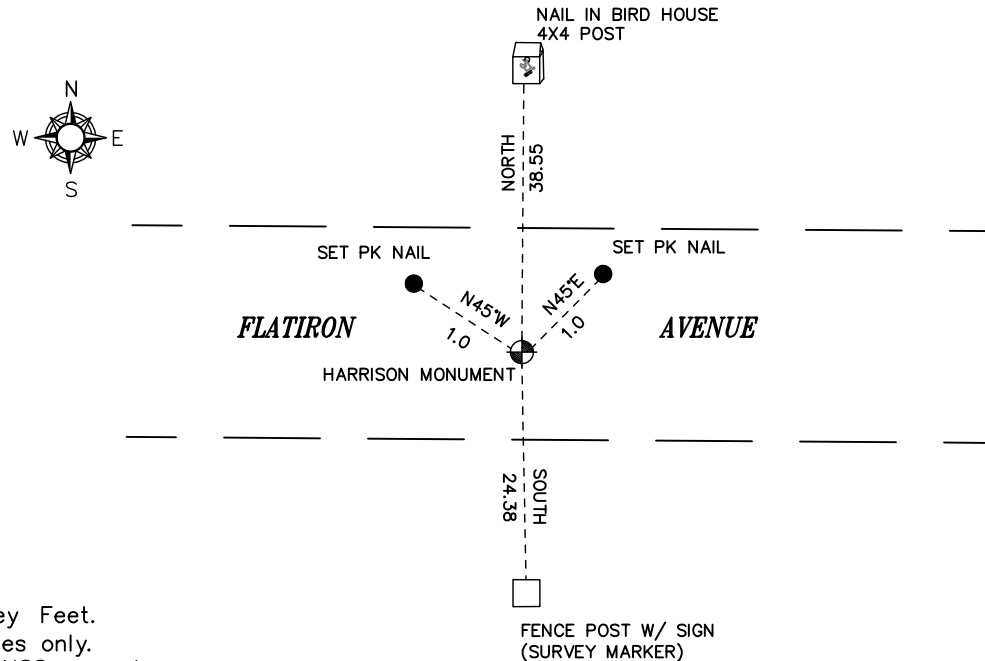
Nick Hillmer
Josh Oslund
Dan Greenwald

MONROE COUNTY
COORDINATE SYSTEM
NAD 1983 (2007)

HARRISON MONUMENT
Northing (Y) 397530.52
Easting (X) 689091.29

Base Station - 22 182W
Northing (Y) 408053.25
Easting (X) 679287.00

All distances are shown in U.S. Survey Feet.
Bearings are for tie reference purposes only.
Coordinates were derived from RTK GNSS procedures.



⊙ = LOCATION CORNER
Corner I.D. E 1/4 35
T 18 N R 2 W
Town of Greenfield
Monroe County, WI.