

**U.S. PUBLIC LAND CORNER  
MAINTENANCE**

# 14  
Corner ID: W1/4 Sec. 6, T18N-R1W  
21802012000

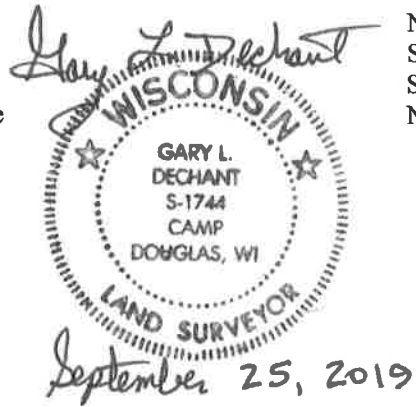
<u>DATE</u>	<u>CREW</u>	<u>MONUMENT TYPE</u>
September 25, 2019	Zachariah P. Dechant Gary L. Dechant	Existing Railroad spike over Harrison. Harrison down 10" in center of CTH "G" Mason nail 1' south & 1' East

References:

- 1) Set 3/4"x24" round iron bar, down 8", in field
- 2) Set 3/4"x24" round iron bar, down 10", in field
- 3) Existing 3/4" round iron bar, down 10", in field
- 4) Set 3/4"x24" round iron bar, down 4" west side field entrance

<u>Bearing</u>	<u>Distance</u>
N13E	49.94'
S7E	42.21'
S13W	43.24'
N7W	43.94'

Reference markers set on straight lines with Harrison



I, Harley Sime, do hereby certify that on the \_\_\_\_\_ day of \_\_\_\_\_ 19 74, I found (evidence) ~~(no evidence)~~ of the W 1/4 corner of Section 6, T 18 N, R 1 W Fourth Principal Meridian, and I re-established said corner according to the Wisconsin Statutes as shown and described hereon.

Dated this 25 day of Feb 19 75.

Harley Sime  
County Surveyor  
title

History of original corner establishment:

In June of 1908, Fred Holden ( County Surveyor ) set a 1" iron pipe at this corner. This iron pipe was found in good condition during the resurvey of this Section in 1974.

Description of corner evidence found:

Having located this 1" iron pipe set by F. Holden I replaced it with a Harrison monument.

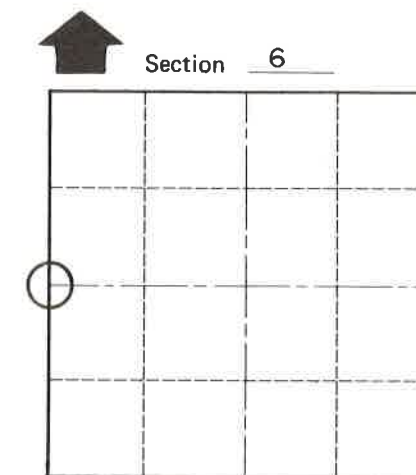
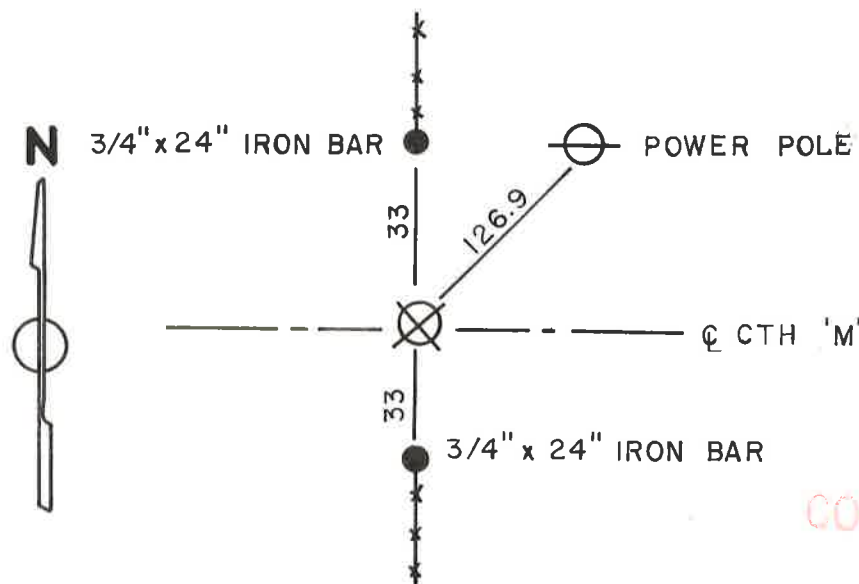
**See Reverse Side  
For Maintenance**

Description of corner and witness monuments, references and accessories used to perpetuate the original or re-established location of this corner:

Standard Harrison monument set 4" below blacktop. Accessories shown below.

Witnesses to corner location:

- SURVEY CREW
- K. Pritzlaff - Survey Crew Chief
  - D. Malliet
  - B. Jung
  - A. Lueck



O = LOCATION CORNER  
T 18 N R 1 W  
WISCONSIN

**PLACED  
COUNTY SURVEYOR'S  
SIGN 5-19-87**

SURVEY CONTROL ORDER

Horizontal	_____
Vertical	_____

WISCONSIN COORDINATE SYSTEM

Corner	East (X)	North (Y)	Elevation (Z)	Zone
Control Sta. Name				

City, Village or Town La Grange  
County of Monroe

COUNTY SURVEYOR FORM NO. 1