

CERTIFICATE

CERTIFIED LAND CORNER

No. 22

21802010020

I, Garold A. Sime, do hereby certify that on the 28th day of April 1978, I found (evidence) (~~no evidence~~) of the N $\frac{1}{4}$ corner of Section 12, T 18 N, R 2 W Fourth Principal Meridian, and I re-established said corner according to the Wisconsin Statutes as shown and described hereon.

Dated this 22nd day of Jan. 1979.

Garold A. Sime, R.L.S. 1261

Crew Chief, County Surveyor's
Title Office

History of original corner establishment:

O. R. Dahl was here in April of 1871.
Fred Holden was also here in May of 1907.

Description of corner evidence found:

Set Harrison over existing 1 $\frac{1}{4}$ " pipe, the top 6" of the pipe was bent over. When we tried to straighten it, the top broke off. The remainder of the pipe is still there, down 2.5'±.

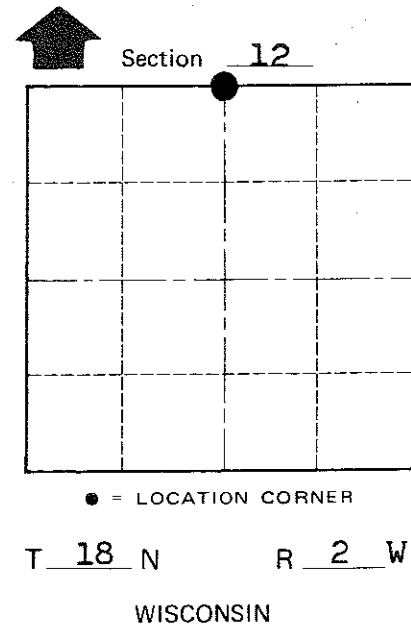
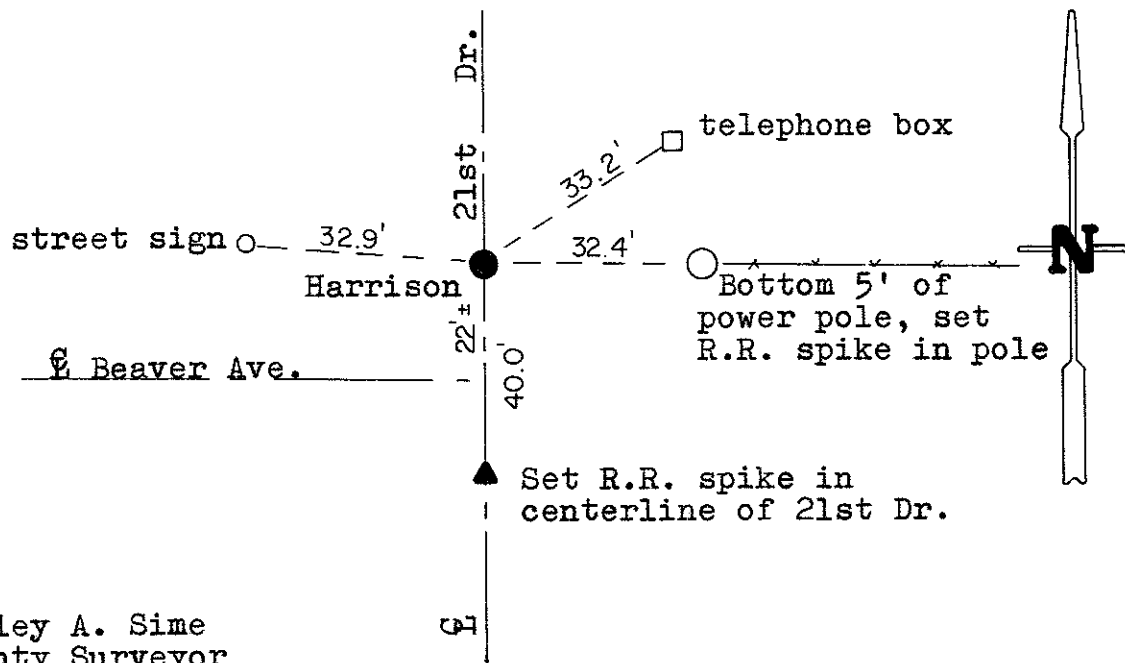
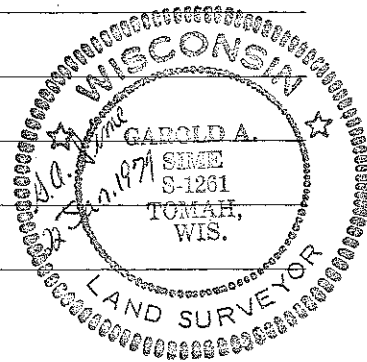
Description of corner and witness monuments, references and accessories used to perpetuate the original or re-established location of this corner:

Witnesses to corner location:

G. Sime

C. Pietz

L. Radcliffe



COUNTY SURVEYOR FORM NO. 1

SURVEY CONTROL ORDER

Horizontal _____
Vertical _____

Approved by: Harley A. Sime
County Surveyor

WISCONSIN COORDINATE SYSTEM

Corner	East (X)	North (Y)	Elevation (Z)	Zone
Control Sta. Name				

City, Village or Town Greenfield
County of Monroe