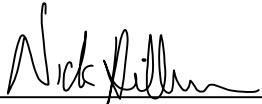


**CERTIFICATE**

I, Nicholas M. Hillmer, do hereby certify that this document and the data contained herein was prepared by me or under my direct supervision and that I am a duly Licensed Land Surveyor under the laws of the State of Wisconsin.

Dated this 21st day of May, 2013



Nicholas M. Hillmer, P.L.S. 2909  
Anderson Engineering of Minnesota, LLC.

**CERTIFIED LAND CORNER**

History of corner established since Original Government Survey

In September of 1911 Fred Holden's notes show a 1 1/2 inch pipe at this corner as of record CSR 1720. In November of 1982 William Jung found a 1 1/2 inch pipe at this corner.

Description of evidence found

On December 4th, 2012, Anderson Engineering of Minnesota located Holden's 1 1/2 inch iron pipe 1.2 feet above grade and 0.8 feet south of a metal post. On April 17, 2013, Anderson Engineering of Minnesota replaced Holden's pipe with a 30 inch Berntsen aluminum dig monument with a 3 1/4 inch aluminum cap, stamped "FORT MCCOY BOUNDARY" "2013" "ANDERSON ENG. OF MN."

No. \_\_\_\_\_  
**21802042020**

Description of corner and witness monuments, references and accessories used to perpetuate the original or re-established location of this corner:

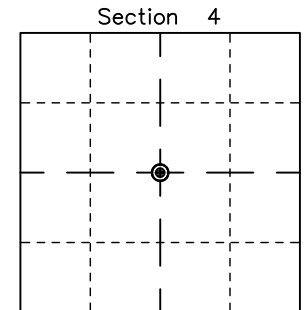
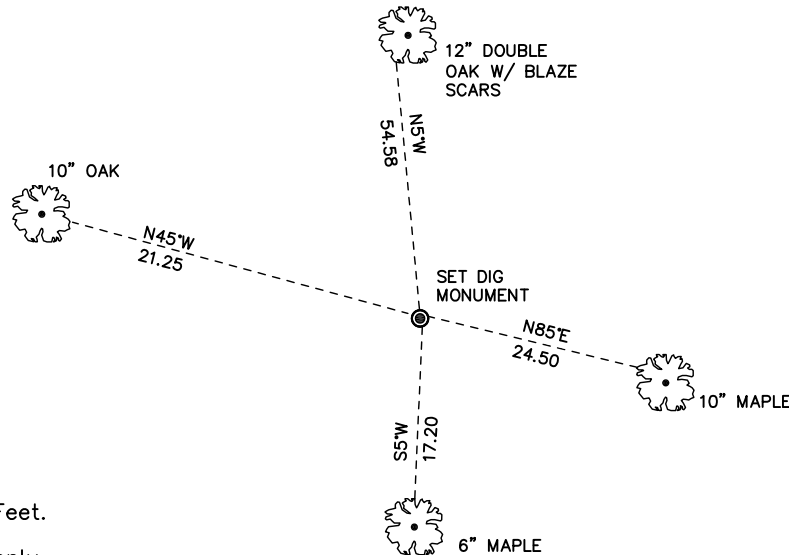
Witnesses to corner location:

Nick Hillmer  
Josh Oslund  
Dan Greenwald

MONROE COUNTY  
COORDINATE SYSTEM  
NAD 1983 (2007)

MCCOY DIG MONUMENT  
Northing (Y) 423789.83  
Easting (X) 675928.89

Base Station - 22 182W  
Northing (Y) 408053.25  
Easting (X) 679287.00



⊙ = LOCATION CORNER  
Corner I.D. C 1/4 4  
T 18 N R 2 W  
Town of Greenfield  
Monroe County, WI.

All distances are shown in U.S. Survey Feet.  
Ties are to 60D nails set in trees.  
Bearings are for tie reference purposes only.  
Coordinates were derived from RTK GNSS procedures.

21802042020

I, William C. Jung, do hereby certify that on the 29th day of November 1982, I found (evidence) ~~(no evidence)~~ of the Center 1/4 corner of Section 4, T 18 N, R 2 W Fourth Principal Meridian, and I re-established said corner according to the Wisconsin Statutes as shown and described hereon.

Dated this 23rd day of Feb. 1983.

William C. Jung  
Deputy County Surveyor  
Title

History of corner establishment since Original Government Survey

In September of 1911 Holden's notes show a 1 1/2" pipe at this corner. According to the McCoy boundary notes, a 1 1/2" iron pipe was found at this corner during WWII.

Description of corner evidence found:

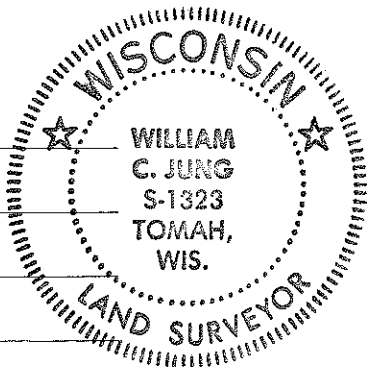
I found what I believe to be Holden's old pipe.

Description of corner and witness monuments, references and accessories used to perpetuate the original or re-established location of this corner:

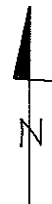
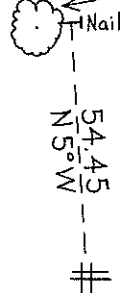
Witnesses to corner location:

William Jung

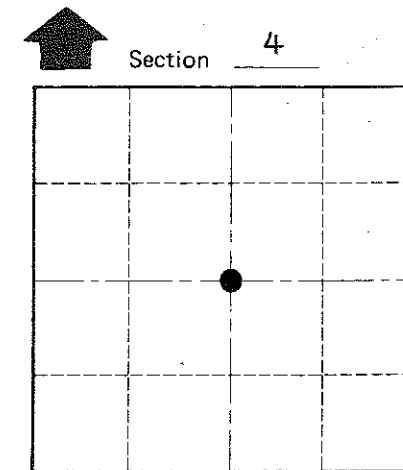
Melvin Pliner



Double blazed 10" double White Oak  
Distance to nail in hack  
Magnetic bearing to tree



Found a 1 1/2" iron pipe which I pounded down and left up 7". 7" North of the corner is a military steel fence post, up 4' +. About 6' North of the corner is an old rotted stump, possibly blazed.



• = LOCATION CORNER

T 18 N R 2 W

WISCONSIN

Approved: **HARLEY A. SIME**  
**MONROE CO. SURVEYOR**

SURVEY CONTROL ORDER

Horizontal	_____
Vertical	_____

WISCONSIN COORDINATE SYSTEM

Corner	East (X)	North (Y)	Elevation (Z)	Zone
Control Sta. Name				

~~City, Village or~~ Town Greenfield  
County of Monroe

COUNTY SURVEYOR FORM NO. 1