

21802040020

I, William C. Jung, do hereby certify that on the 29th day of November 1982, I found (evidence) ~~██████████~~ of the South 1/4 corner of Section 4, T18 N, R 2 W Fourth Principal Meridian, and I re-established said corner according to the Wisconsin Statutes as shown and described hereon.

History of corner establishment since Original Government Survey

Holden re-established this corner in September of 1911. According to the McCoy boundary notes, a marker was probably set at this corner in WWII.

Description of corner evidence found:

I found a McCoy boundary marker which I accepted as the 1/4 corner.

Dated this 21st day of Dec. 1982.

William C. Jung

Deputy County Surveyor

Title

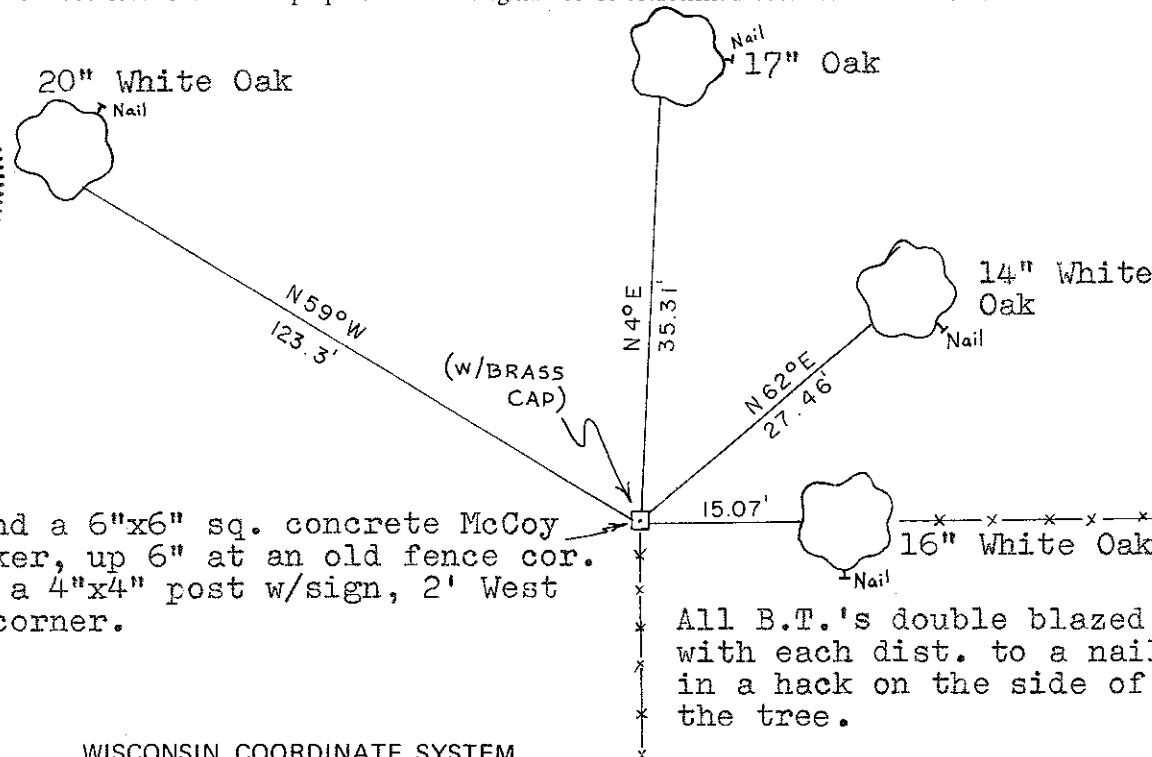
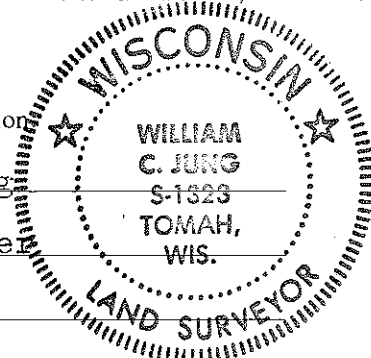
COUNTY SURVEYOR FORM NO. 1

Description of corner and witness monuments, references and accessories used to perpetuate the original or re-established location of this corner:

Witnesses to corner location

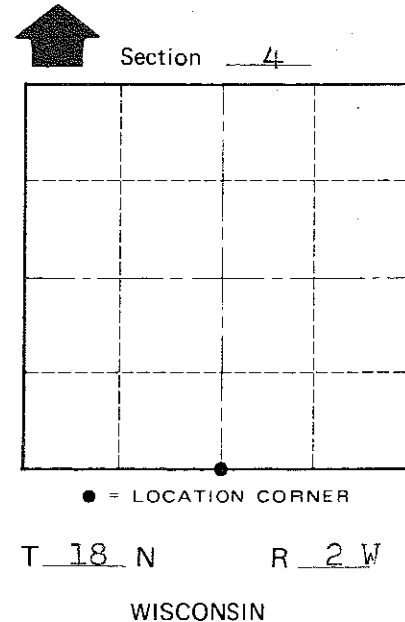
William C. Jung

Melvin A. Pliner



Found a 6"x6" sq. concrete McCoy marker, up 6" at an old fence cor. Set a 4"x4" post w/sign, 2' West of corner.

All B.T.'s double blazed with each dist. to a nail in a hack on the side of the tree.



Approved: HARLEY A. SIME
MONROE CO. SURVEYOR

SURVEY CONTROL ORDER

Horizontal _____
Vertical _____

WISCONSIN COORDINATE SYSTEM

Corner	East (X)	North (Y)	Elevation (Z)	Zone
Control Sta. Name				

~~City, Village or~~ Town of Greenfield

County of Monroe