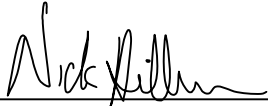


CERTIFICATE

I, Nicholas M. Hillmer, do hereby certify that this document and the data contained herein was prepared by me or under my direct supervision and that I am a duly Licensed Land Surveyor under the laws of the State of Wisconsin.

Dated this 21st day of May, 2013



Nicholas M. Hillmer, P.L.S. 2909
Anderson Engineering of Minnesota, LLC.

CERTIFIED LAND CORNER

History of corner established since Original Government Survey

Fred A. Holden was here in September of 1911. Bryan H. Meyer set a Harrison monument at an occupied fence corner as the best available evidence in 1990.

No. 21802040000

Description of evidence found

On January 24th, 2013, Anderson Engineering of Minnesota located the Harrison monument 0.2 feet above grade and 0.4 feet west of a corner post of a fence that runs north, east, and west.

Description of corner and witness monuments, references and accessories used to perpetuate the original or re-established location of this corner:

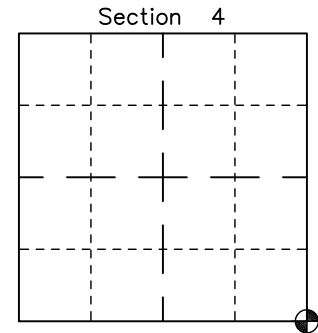
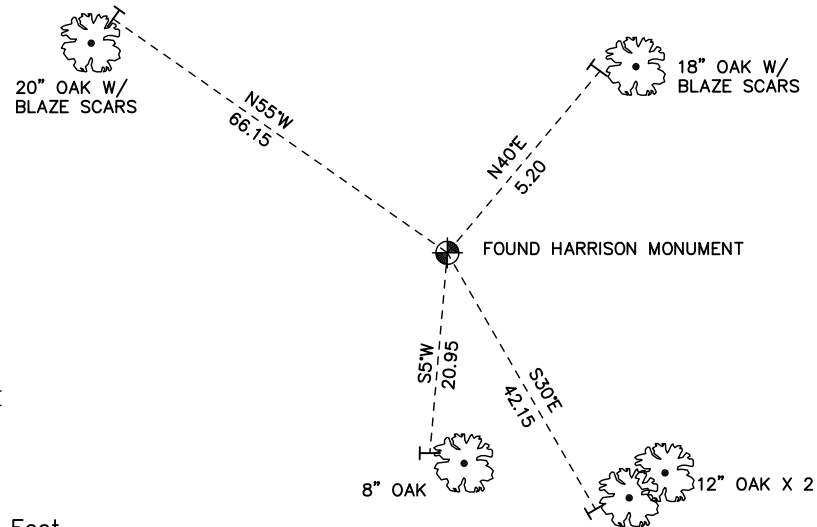
Witnesses to corner location:

Nick Hillmer
Josh Oslund
Dan Greenwald

MONROE COUNTY
COORDINATE SYSTEM
NAD 1983 (2007)

HARRISON MONUMENT
Northing (Y) 421216.44
Easting (X) 678618.38

Base Station - 22 182W
Northing (Y) 408053.25
Easting (X) 679287.00



⊙ = LOCATION CORNER
Corner I.D. SE 4
T 18 N R 2 W
Town of Greenfield
Monroe County, WI.

All distances are shown in U.S. Survey Feet.
Ties are to 60D nails set in trees.
Bearings are for tie reference purposes only.
Coordinates were derived from RTK GNSS procedures.

CERTIFICATE

I, Bryan H. Meyer, do hereby certify that on the 8th day of October 19 90, I found (evidence) ~~no evidence~~ of the Northwest corner of Section 10, T 18 N, R 2 W Fourth Principal Meridian, and I re-established said corner according to the Wisconsin Statutes as shown and described hereon.

Dated this 26th day of Dec. 19 90.

Bryan H. Meyer

Deputy County Surveyor
Title

CERTIFIED LAND CORNER

History of corner establishment since Original Government Survey

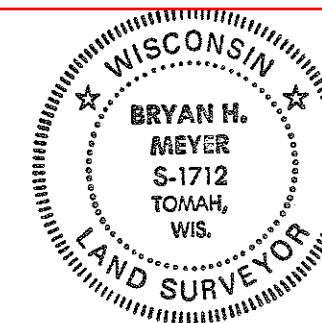
Fred A. Holden was here in September of 1911.

Description of corner evidence found:

I accepted the occupied fence corner as the best available evidence.

No. 27

21802040000



H. A. Sime and Associates
P. O. Box 705
Tomah, Wisconsin 54660
Phone: (608)-372-5392

COUNTY SURVEYOR FORM NO. 1

Description of corner and witness monuments, references and accessories used to perpetuate the original or re-established location of this corner:

Crew: Meyer, Kenworthy

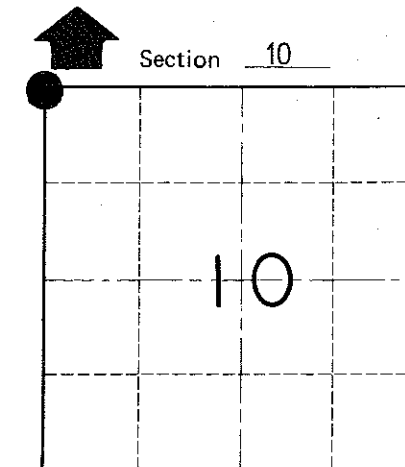
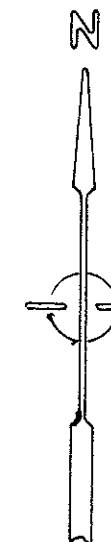
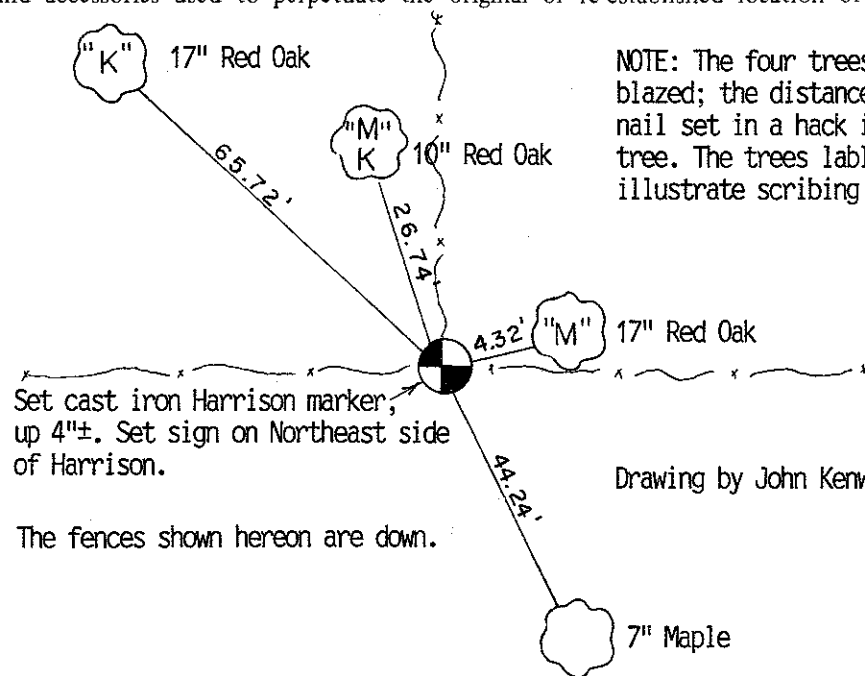
Date: October 8, 1990

Weather: Rain, 50°±

Witnesses to corner location:

John Kenworthy

Bryan H. Meyer



T 18 N R 2 W

WISCONSIN

SURVEY CONTROL ORDER

Horizontal	_____
Vertical	_____

WISCONSIN COORDINATE SYSTEM

Corner	East (X)	North (Y)	Elevation (Z)	Zone
Control Sta. Name				

~~City, Village or~~ Town of Greenfield
County of Monroe