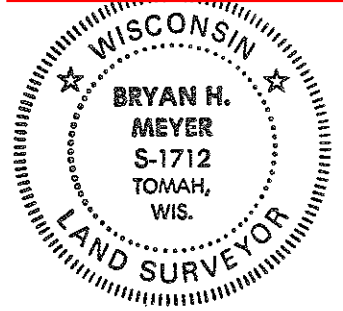


CERTIFICATE

CERTIFIED LAND CORNER

No. 26

**21802030020**



I, Bryan H. Meyer, do hereby certify that on the 9th day of October 19 90, I found (evidence) ~~██████████~~ of the North 1/4 corner of Section 10, T 18 N, R 2 W Fourth Principal Meridian, and I re-established said corner according to the Wisconsin Statutes as shown and described hereon.

History of corner establishment since Original Government Survey

Fred Holden was here in September of 1911.

Description of corner evidence found:

I found a 1" iron pipe at the occupied fence corner. Judging from how old the pipe looks, I would say it was set sometime in the early 1900s. I believe it was set by Holden. I accepted the pipe as the corner.

Dated this 21st day of Dec. 19 90.

*Bryan H. Meyer*

Deputy County Surveyor  
Title

H. A. Sime and Associates  
P. O. Box 705  
Tomah, Wisconsin 54660  
Phone: (608)-372-5392

COUNTY SURVEYOR FORM NO. 1

Description of corner and witness monuments, references and accessories used to perpetuate the original or re-established location of this corner:

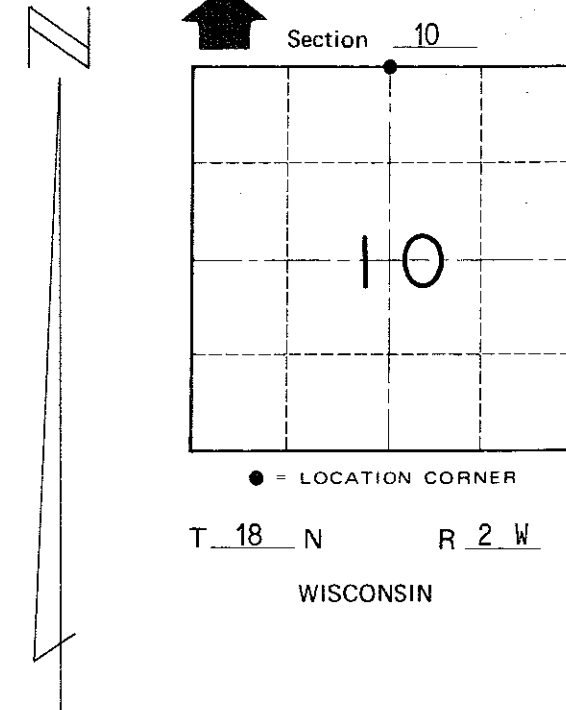
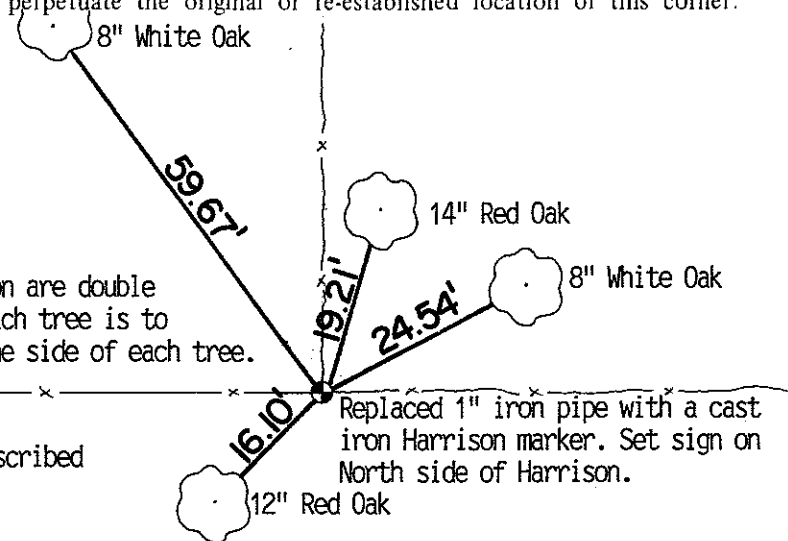
Crew: Meyer, Kenworthy  
Date: October 9, 1990  
Weather: Sunny, Windy, 45°±  
Witnesses to corner location:

John Kenworthy

Bryan H. Meyer

The four trees shown hereon are double blazed; the distance to each tree is to a nail set in a hack in the side of each tree.

NOTE: The trees shown are scribed in the upper blaze.



SURVEY CONTROL ORDER

Horizontal	_____
Vertical	_____

WISCONSIN COORDINATE SYSTEM

Corner	East (X)	North (Y)	Elevation (Z)	Zone
Control Sta. Name				

~~City/Village~~ Town of Greenfield  
County of Monroe