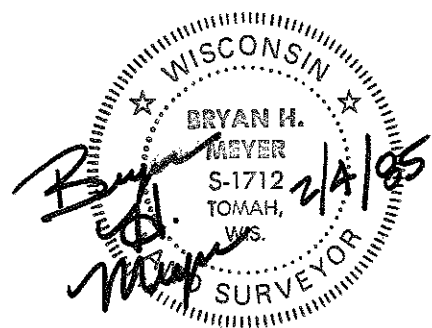


CERTIFICATE

CERTIFIED LAND CORNER

No. 25

**21802030000**



I, Bryan H. Meyer, do hereby certify that on the 29<sup>th</sup> day of June 19 84, I found (evidence) ~~of the Northwest~~ of the Northwest corner of Section 11, T 18 N, R 2 W Fourth Principal Meridian, and I re-established said corner according to the Wisconsin Statutes as shown and described hereon.

Dated this 4<sup>th</sup> day of Feb. 19 85.

Bryan H. Meyer  
Deputy County Surveyor  
Title

History of corner establishment since Original Government Survey

Fred Holden was here in September of 1911.

Description of corner evidence found:

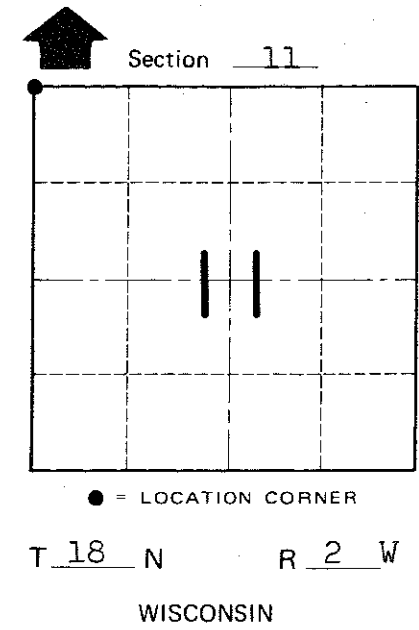
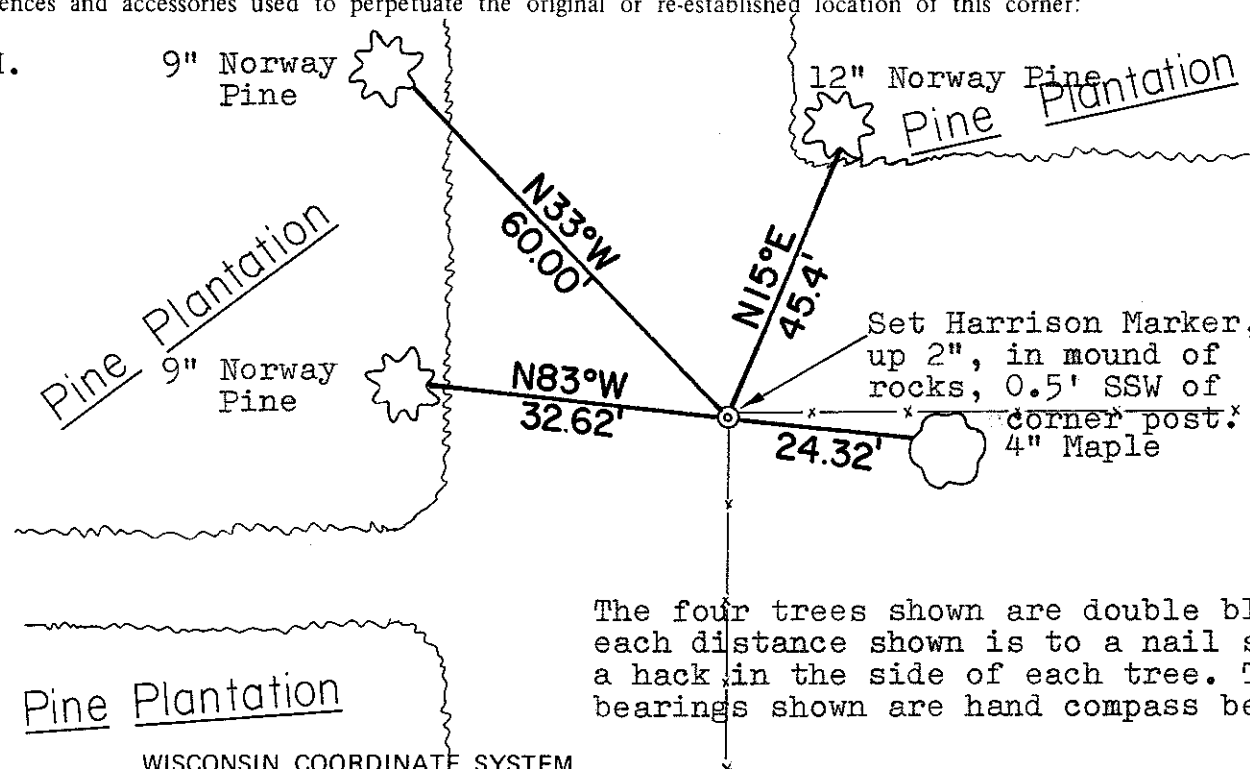
I accepted a two-way fence corner as the best available evidence.

COUNTY SURVEYOR FORM NO. 1

Description of corner and witness monuments, references and accessories used to perpetuate the original or re-established location of this corner:

Crew: Meyer, Wilhite  
Date: June 29, 1984 - 10:30 A.M.  
Weather: P. Cloudy, 75°±.  
Witnesses to corner location:

Bryan H. Meyer  
Dallas Wilhite



The four trees shown are double blazed; each distance shown is to a nail set in a hack in the side of each tree. The bearings shown are hand compass bearings.

SURVEY CONTROL ORDER

Horizontal	_____
Vertical	_____

Corner	East (X)	North (Y)	Elevation (Z)	Zone
Control Sta. Name				

WISCONSIN COORDINATE SYSTEM

~~Village of~~ Town of Greenfield

County of Monroe