

24

**U.S. PUBLIC LAND CORNER
MAINTENANCE**

Corner ID : S1/4, Sec. 2, T18N-R2W

21802020020

<u>DATE</u>	<u>CREW</u>	<u>MONUMENT TYPE</u> -----
March 9, 2017	Zachariah P. Dechant Gary L. Dechant	Harrison intact, down 12" in field

Ties all in good shape, down 12"



I, Bryan H. Meyer, do hereby certify that on the 29th day of June 19 84, I found ~~evidence~~ (no evidence) of the North 1/4 corner of Section 11, T 18 N, R 2 W Fourth Principal Meridian, and I re-established said corner according to the Wisconsin Statutes as shown and described hereon.

Dated this 4th day of Feb. 1985.

Bryan H. Meyer
Deputy County Surveyor
Title

History of corner establishment since Original Government Survey

Fred Holden was here in April of 1909.

Description of corner evidence found:

I set this corner on line and equidistant between the Northwest and Northeast corners of Section 11.

See Reverse Side For Maintenance



COUNTY SURVEYOR FORM NO. 1

Description of corner and witness monuments, references and accessories used to perpetuate the original or re-established location of this corner:

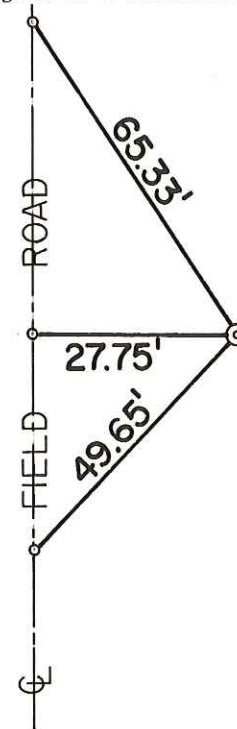
Crew: Meyer, Wilhite
Date: June 29, 1984 - 1:00 P. M.
Weather: P. Cloudy, 75°±.

Witnesses to corner location:

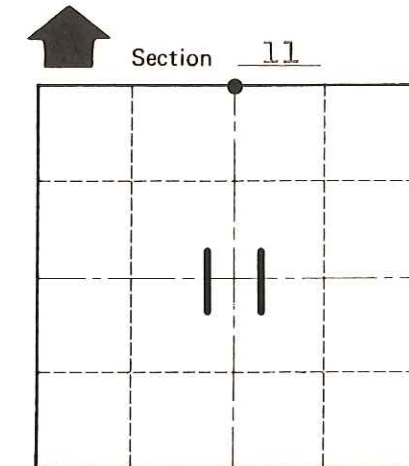
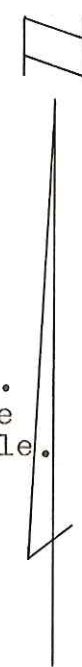
Bryan H. Meyer

Dallas Wilhite

o = Set 3/4"x24" round iron bar, down 12"±.



Set Harrison Marker, down 12"± in hay field. Harrison falls near the center of a slight swale.



● = LOCATION CORNER
T 18 N R 2 W
WISCONSIN

SURVEY CONTROL ORDER

Horizontal	_____
Vertical	_____

WISCONSIN COORDINATE SYSTEM

Corner	East (X)	North (Y)	Elevation (Z)	Zone
Control Sta. Name				

~~Village of~~ Town of Greenfield
County of Monroe