

CERTIFICATE

I, William C. Jung, do hereby certify that on the 25th day of June 1979, I found (evidence) () of the Southeast corner of Section 27, T18 N, R 2 W, Fourth Principal Meridian, and I re-established said corner according to the Wisconsin Statutes as shown and described hereon.

Dated this 10th day of Feb. 1981.

William C. Jung
William C. Jung, R.L.S. 1323
Title

CERTIFIED LAND CORNER

No. 105

21802270000

History of original corner establishment:

Fred Holden reestablished this corner in January of 1901. Government surveyors found a concrete monument at this corner in 1944 while doing the McCoy boundary survey. It appears that this corner was set in about 1938 by government engineers. Fred Zietlow used this monument in his survey of October of 1968. H.A. Sime used this in a December, 1974 survey.

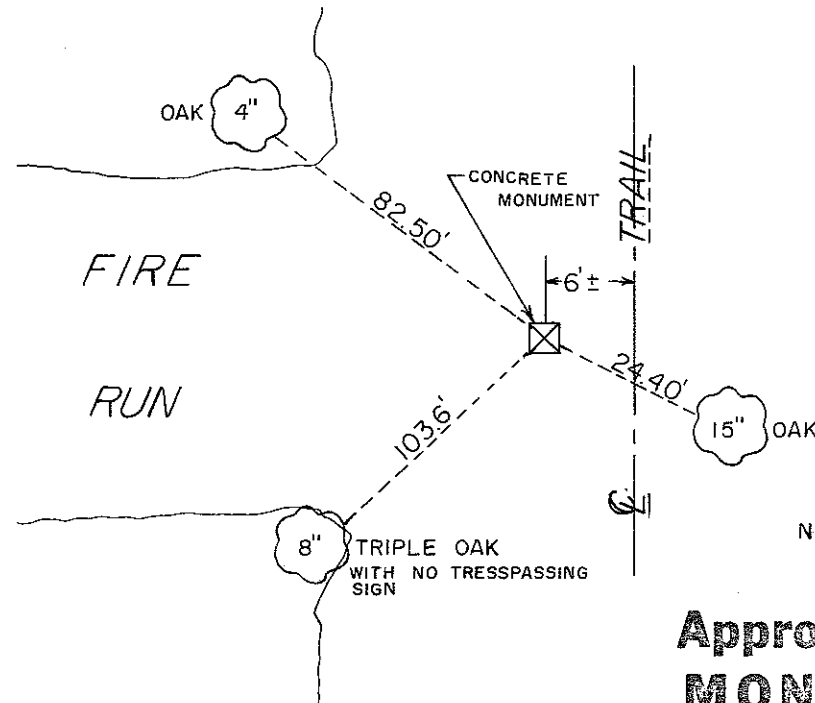
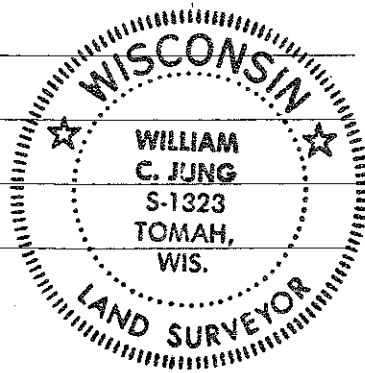
Description of corner evidence found:

Found 9" x 9" square concrete post, up, 3'±, has pointed top. McCoy Boundary Marker. Marked "18".

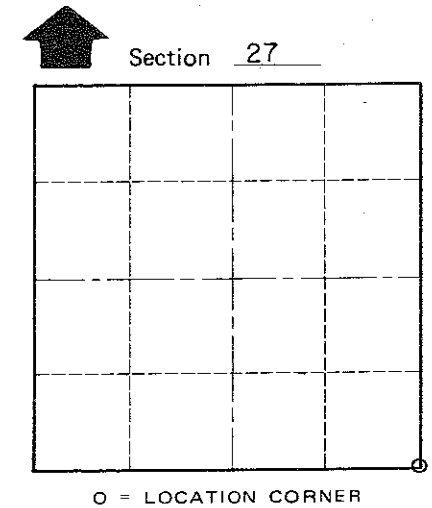
Description of corner and witness monuments, references and accessories used to perpetuate the original or re-established location of this corner:

Witnesses to corner location:

Jung
Pietz



NOTE: ALL TREES BLAZED WITH NAIL & CAP SET



T 18 N R 2 W
WISCONSIN

COUNTY SURVEYOR FORM NO. 1

SURVEY CONTROL ORDER

Horizontal _____
Vertical _____

WISCONSIN COORDINATE SYSTEM

Corner	East (X)	North (Y)	Elevation (Z)	Zone
Control Sta. Name				

Approved: **HARLEY A. SIME**
MONROE CO. SURVEYOR

_____ or Town Greenfield

County of Monroe