

**U.S. PUBLIC LAND CORNER
MAINTENANCE**

74

Corner ID: W1/4 Sec. 19, T18N-R1W

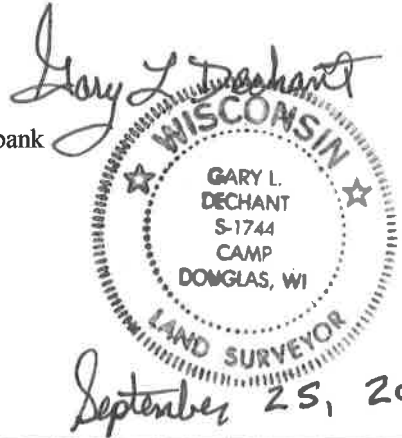
21802242000

<u>DATE</u>	<u>CREW</u>	<u>MONUMENT TYPE</u>
September 25, 2019	Zachariah P. Dechant Gary L. Dechant	Harrison intact, down 12", 40' SW of Elk Road on line with east stretch of Elk Road. All 1975 ties gone.

References:

- 1) Set 3/4"x24" round iron bar, down 4", 23' south of road
- 2) Set 3/4"x24" round iron bar, down 10" edge of field
- 3) Set 3/4"x24" round iron bar, down 4", center of field road
- 4) Set 3/4"x24" round iron bar, down 4", toe of slope of road bank

<u>Bearing</u>	<u>Distance</u>
S77E	39.73'
S34E	43.32'
S10W	27.19'
N1E	27.84'



I, Harley Sime, do hereby certify that on the _____ day of _____ 1974, I found ~~(evidence)~~ (no evidence) of the W 1/4 corner of Section 19, T 18 N, R 1 W, Fourth Principal Meridian, and I re-established said corner according to the Wisconsin Statutes as shown and described hereon.

Dated this 12 day of March 1975.

Harley Sime
 COUNTY SURVEYOR
 Title

History of original corner establishment:

Description of corner evidence found:

Set corner midway between opposite Section corners and on same line. This site hit existing road centerlines pretty good.

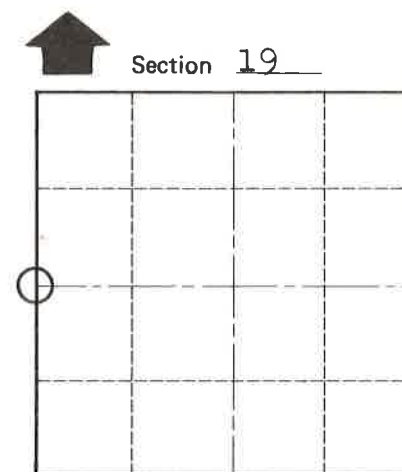
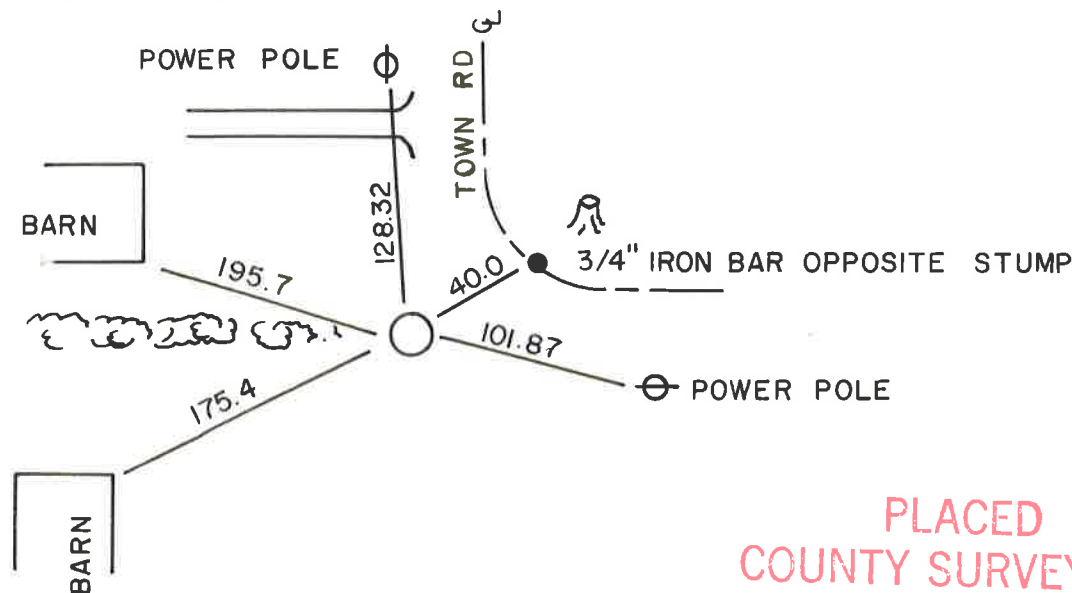
See Reverse Side For Maintenance

Description of corner and witness monuments, references and accessories used to perpetuate the original or re-established location of this corner:

Set standard Harrison monument flush in drainage ditch, with accessories listed below:

Witnesses to corner location:

- SURVEY CREW
K. Pritzlaff - Survey Crew Chief
D. Malliet
B. Jung
A. Lueck



T 18 N R 1 W
 WISCONSIN

PLACED COUNTY SURVEYOR'S SIGN 5-19-87

City, Village or Town La Grange
 County of Monroe

COUNTY SURVEYOR FORM NO. 1

SURVEY CONTROL ORDER

Horizontal	_____
Vertical	_____

WISCONSIN COORDINATE SYSTEM

Corner	East (X)	North (Y)	Elevation (Z)	Zone
Control Sta. Name				