

I, William C. Jung, do hereby certify that on the 13 day of December 1974, I found (evidence) (no evidence) of the N 1/4 corner of Section 26, T 18 N, R 2 W, Fourth Principal Meridian, and I re-established said corner according to the Wisconsin Statutes as shown and described hereon.

Dated this 23rd day of Nov. 1977.

William C. Jung, R.L.S. 1323

Crew Chief, County Surveyor's  
Title Office

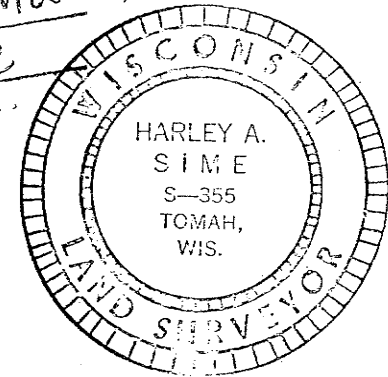
History of original corner establishment:

Replaced \_\_\_\_\_ With \_\_\_\_\_  
On 3/31/82, Crew: Jung + Dechant  
Comments Fd. Harrison Moved;  
Reset the Harrison @  
its correct location.

Description of corner evidence found:

Split distance between the NE and NW corners.

UPDATE: This corner was perpetuated from ties taken prior to road construction. New ties were established as illustrated below.  
Douglas J. Malliet, R.L.S. #1266  
11 September 1997



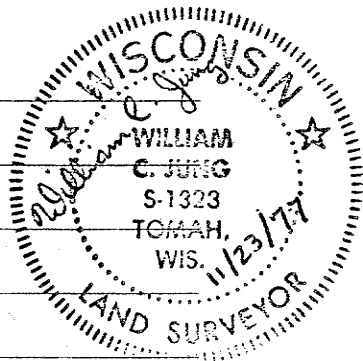
Description of corner and witness monuments, references and accessories used to perpetuate the original or re-established location of this corner:

Witnesses to corner location:

W. Jung

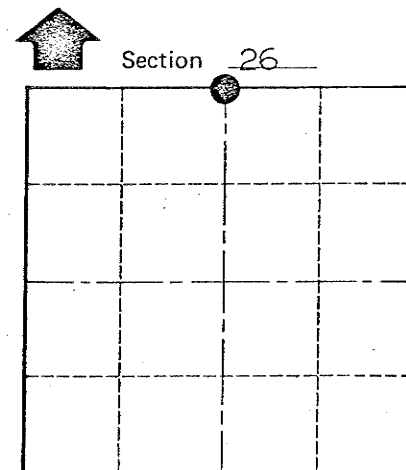
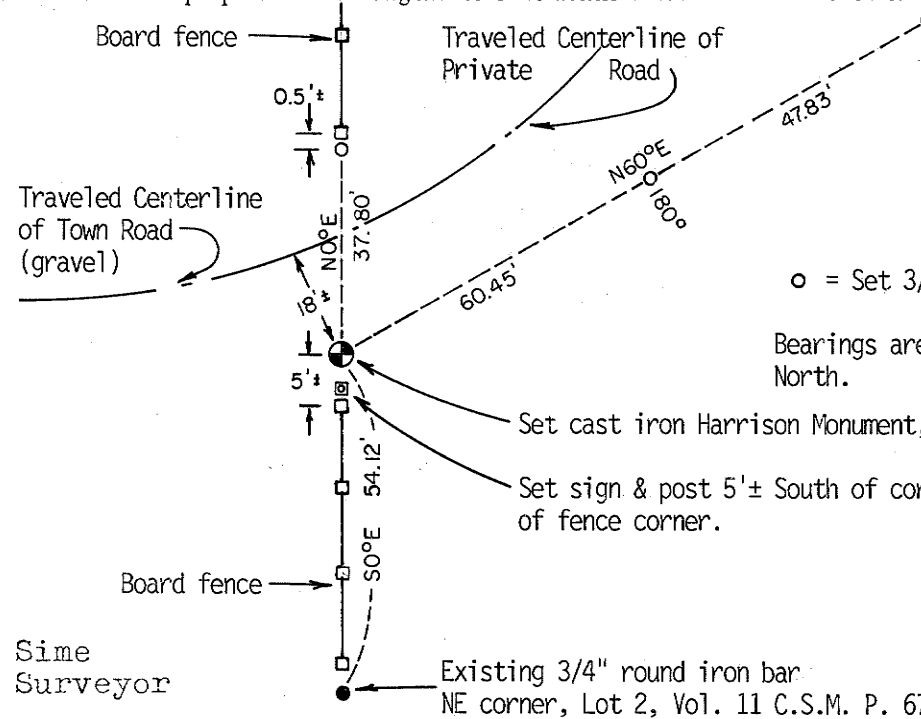
A. Lueck

D. Malliet



CREW: Douglas J. Malliet  
Bryan H. Meyer  
11 September 1997

Approved: Harley Sime  
County Surveyor

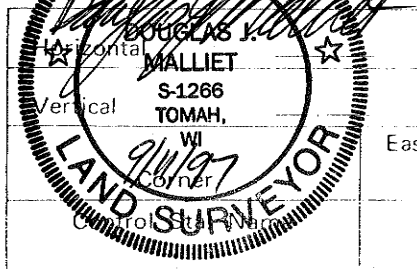


o = LOCATION CORNER

T 18 N R 2 W

WISCONSIN

WISCONSIN COORDINATE SYSTEM



East (X)	North (Y)	Elevation (Z)	Zone

City, Village or Town Greenfield

County of Monroe