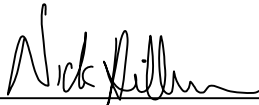


CERTIFICATE

I, Nicholas M. Hillmer, do hereby certify that this document and the data contained herein was prepared by me or under my direct supervision and that I am a duly Licensed Land Surveyor under the laws of the State of Wisconsin.

Dated this 23rd day of May, 2013



Nicholas M. Hillmer, P.L.S. 2909
Anderson Engineering of Minnesota, LLC.

CERTIFIED LAND CORNER

History of corner established since Original Government Survey

The 1940's McCoy boundary notes show a corner at this location.

Description of evidence found

On September 27th, 2012, Anderson Engineering of Minnesota located the McCoy monument, a 4 inch U.S. Army Corps of Engineers survey control mark disk set in concrete 0.3 feet above grade. The monument was not accepted as the corner. On April 16th, 2013, Anderson Engineering of Minnesota set a 30 inch Berntsen aluminum dig monument with 3 1/4 inch cap, stamped "FORT MCCOY BOUNDARY" "2013" "ANDERSON ENG. OF MN." The monument was set midway online between the south quarter corner and the center of Section 34.

No. _____
21802341020

Description of corner and witness monuments, references and accessories used to perpetuate the original or re-established location of this corner:

Witnesses to corner location:

Nick Hillmer
Josh Oslund
Dan Greenwald

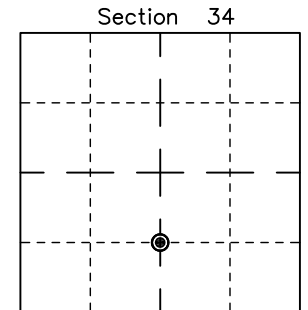
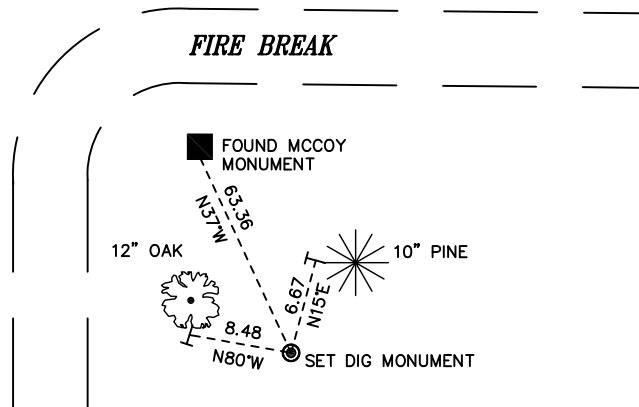
MONROE COUNTY
COORDINATE SYSTEM
NAD 1983 (2007)

MCCOY DIG MONUMENT
Northing (Y) 396132.59
Easting (X) 681250.46

Base Station - 22 182W
Northing (Y) 408053.25
Easting (X) 679287.00



All distances are shown in U.S. Survey Feet.
Ties are to 60D nails set in trees.
Bearings are for tie reference purposes only.
Coordinates were derived from RTK GNSS procedures.



⊙ = LOCATION CORNER
Corner I.D. CS 1/16 34
T 18 N R 2 W
Town of Greenfield
Monroe County, WI.