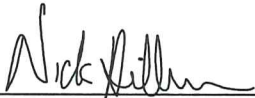


CERTIFICATE

I, Nicholas M. Hillmer, do hereby certify that this document and the data contained herein was prepared by me or under my direct supervision and that I am a duly Licensed Land Surveyor under the laws of the State of Wisconsin.

Dated this 23rd day of May, 2013



Nicholas M. Hillmer, P.L.S. 2909
Anderson Engineering of Minnesota, LLC.

CERTIFIED LAND CORNER

History of corner established since Original Government Survey

No know history of this corner since the government survey.

Description of evidence found

On May 21th, 2013, Anderson Engineering of Minnesota set a Harrison monument midway and online in between the northeast and southeast corners of Section 33.

No. 21802332000



Description of corner and witness monuments, references and accessories used to perpetuate the original or re-established location of this corner:

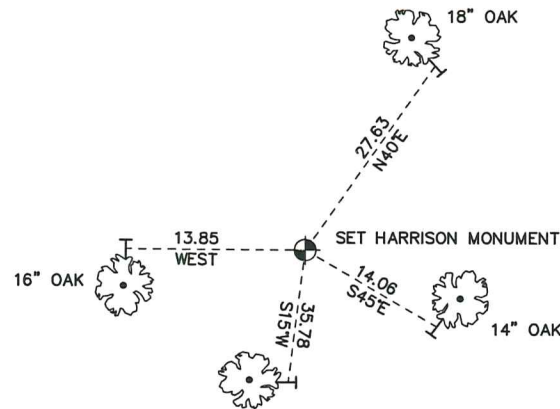
Witnesses to corner location:

Nick Hillmer
Kyle Anderson
Dan Greenwald

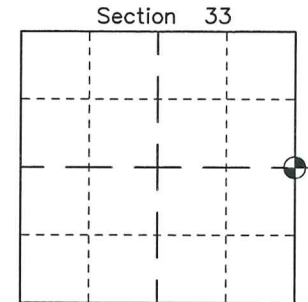
MONROE COUNTY
COORDINATE SYSTEM
NAD 1983 (2007)

HARRISON MONUMENT
Northing (Y) 397474.34
Easting (X) 678656.31

Base Station - 22 182W
Northing (Y) 408053.25
Easting (X) 679287.00



ALL TREES DOUBLE BLAZED.
SIGN AND POST 1.3 FEET SOUTH



● = LOCATION CORNER
Corner I.D. E 1/4 33
T 18 N R 2 W
Town of Greenfield
Monroe County, WI.

All distances are shown in U.S. Survey Feet.
Ties are to 60D nails set in trees.
Bearings are for tie reference purposes only.
Coordinates were derived from RTK GNSS procedures.