

21802292000

I, Garold A. Sime, do hereby certify that on the 15th day of October 1991, I found ~~(evidence)~~ (no evidence) of the W 1/4 corner of Section 28, T 18 N, R 2 W Fourth Principal Meridian, and I re-established said corner according to the Wisconsin Statutes as shown and described hereon.

Dated this 11th day of Nov. 1991.

Garold A. Sime

Monroe County Surveyor
Title

History of corner establishment since Original Government Survey

The surveyor's for Camp McCoy set an iron pipe at this corner 1/18/46.

Description of corner evidence found:

I could not find the McCoy's surveyors iron pipe.
I established this corner on line and equidistant between existing section corners.

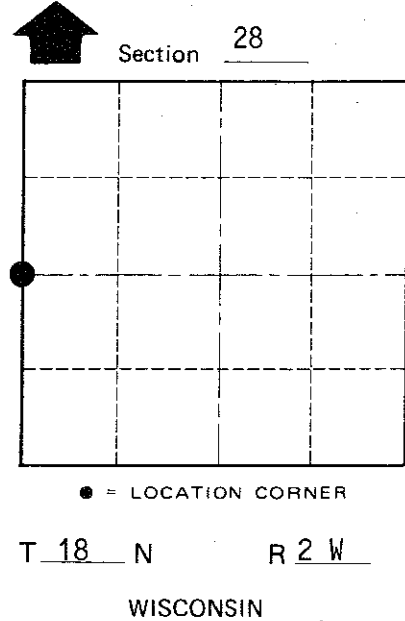
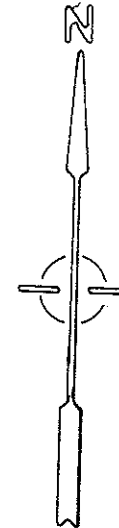
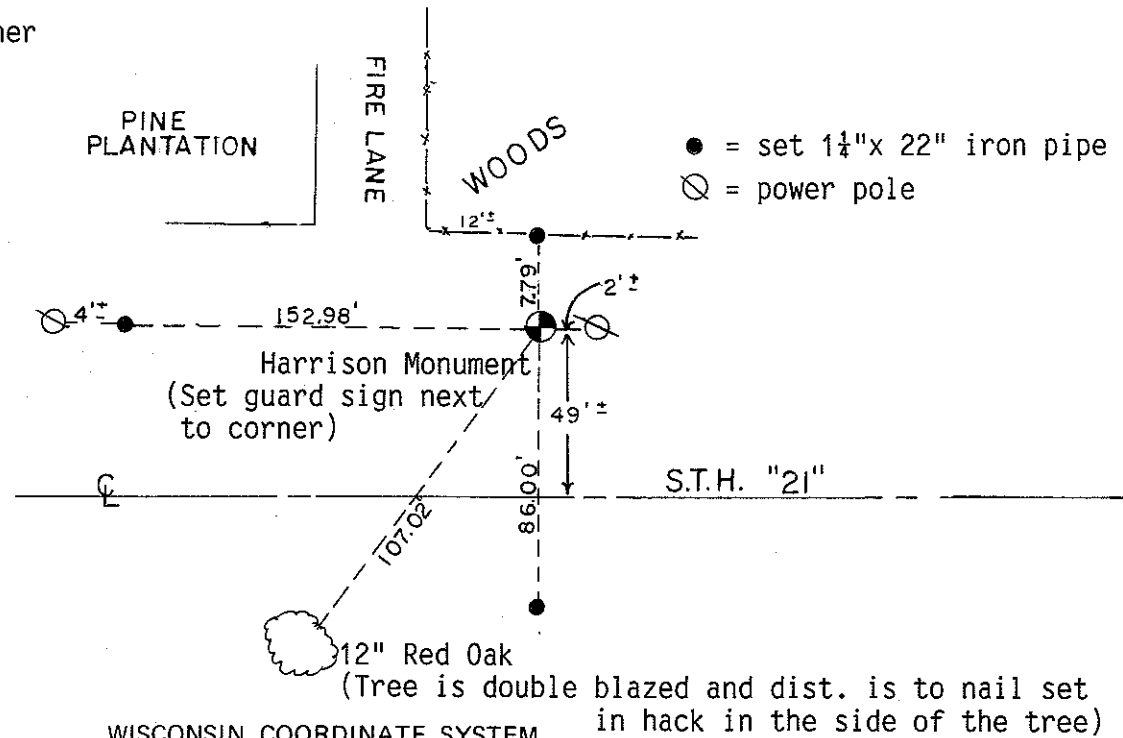
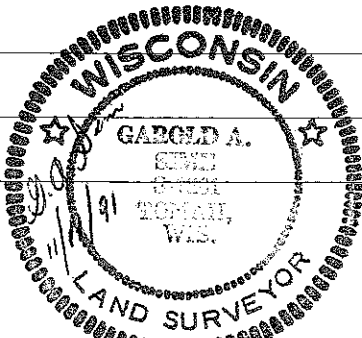
Description of corner and witness monuments, references and accessories used to perpetuate the original or re-established location of this corner:

Set cast iron Harrison Monument at corner

Witnesses to corner location:

Garold A. Sime, R.L.S.

John Kenworthy



SURVEY CONTROL ORDER

Horizontal	_____
Vertical	_____

WISCONSIN COORDINATE SYSTEM

Corner	East (X)	North (Y)	Elevation (Z)	Zone
Control Sta. Name				

~~XXXXXX~~ or Town of Greenfield
County of Monroe

COUNTY SURVEYOR FORM NO. 1