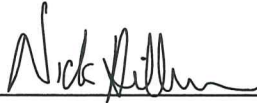


CERTIFICATE

I, Nicholas M. Hillmer, do hereby certify that this document and the data contained herein was prepared by me or under my direct supervision and that I am a duly Licensed Land Surveyor under the laws of the State of Wisconsin.

Dated this 23rd day of May, 2013



Nicholas M. Hillmer, P.L.S. 2909
Anderson Engineering of Minnesota, LLC.

CERTIFIED LAND CORNER

History of corner established since Original Government Survey

Schroeder found this corner in place in June of 1883. In 1946 surveyors from Camp McCoy found an original bearing tree stump and re-established the corner, setting an iron pipe at the true corner. William Jung found this pipe on February 19, 1982, took ties, and recorded a tie sheet in the county surveyors files. In 1982 E.O.D. personnel from Fort McCoy destroyed the section corner when they blew a duck pond hole. In 1983 Jung went back out and found the pipe blown over and buried by the blast. Jung reset the pipe at its former location.

Description of evidence found

On February 22nd, 2013, Anderson Engineering of Minnesota located the 2 3/8 inch pipe flush with the ground and 0.3 foot west of a fence post.

No. 21802290000



Description of corner and witness monuments, references and accessories used to perpetuate the original or re-established location of this corner:

Witnesses to corner location:

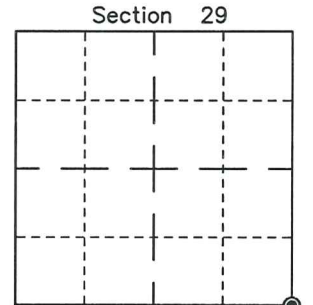
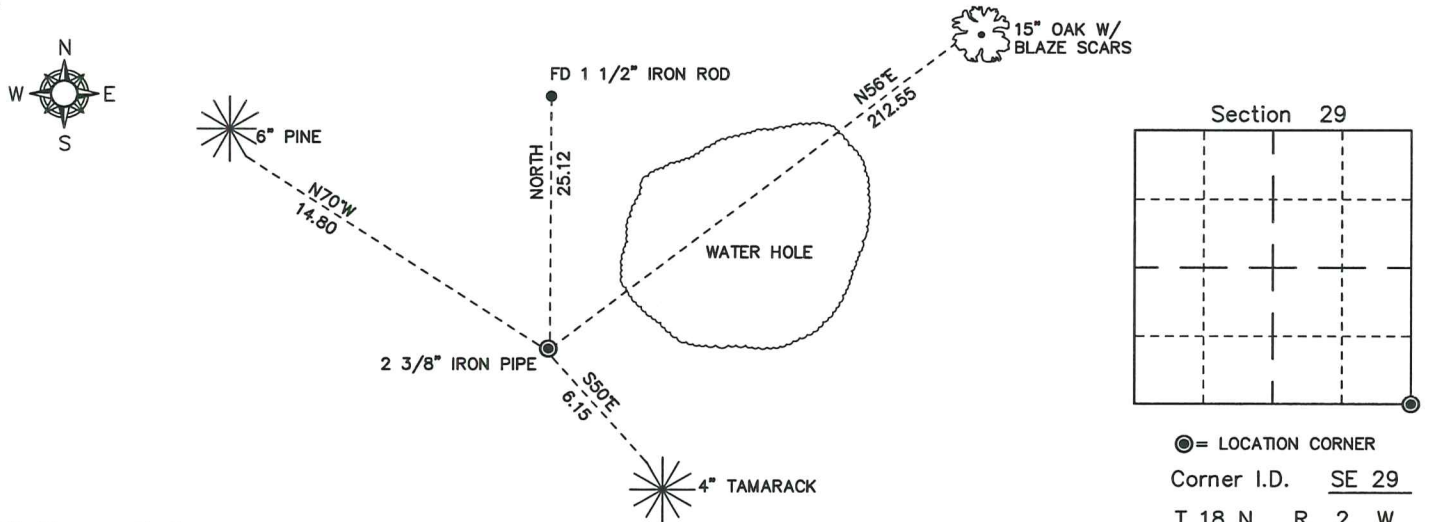
Nick Hillmer
Josh Oslund
Dan Greenwald

MONROE COUNTY
COORDINATE SYSTEM
NAD 1983 (2007)

2 3/8 INCH PIPE
Northing (Y) 400174.89
Easting (X) 673479.11

Base Station - 22 182W
Northing (Y) 408053.25
Easting (X) 679287.00

All distances are shown in U.S. Survey Feet.
Ties are to 60D nails set in trees.
Bearings are for tie reference purposes only.
Coordinates were derived from RTK GNSS procedures.



● = LOCATION CORNER
Corner I.D. SE 29
T 18 N R 2 W
Town of Greenfield
Monroe County, WI.

21802290000

I, William C. Jung, do hereby certify that on the 7th day of December 1983, I found (evidence) ~~(no evidence)~~ of the Southwest corner of Section 28, T 18 N, R 2 W Fourth Principal Meridian, and I re-established said corner according to the Wisconsin Statutes as shown and described hereon.

Dated this 7th day of Dec. 1983.

William C. Jung

Deputy County Surveyor, R.L.S.1323

Title

History of corner establishment since Original Government Survey
 Schroeder (or Kenyon ?) found this corner in place in June of 1883. In 1946 surveyors from Camp McCoy found an original bearing tree stump and re-established the corner, setting an iron pipe at the true corner. I found this pipe on February 19, 1982, took ties, and recorded a tie sheet in the County Surveyor files. I verified the pipe as the Camp McCoy survey corner.

Description of corner evidence found:

In 1982 E.O.D. personnel from Fort McCoy destroyed the section corner when they blew a duck pond hole. I went back out and set the pipe at its former location. I found the pipe blown over and buried by the blast.

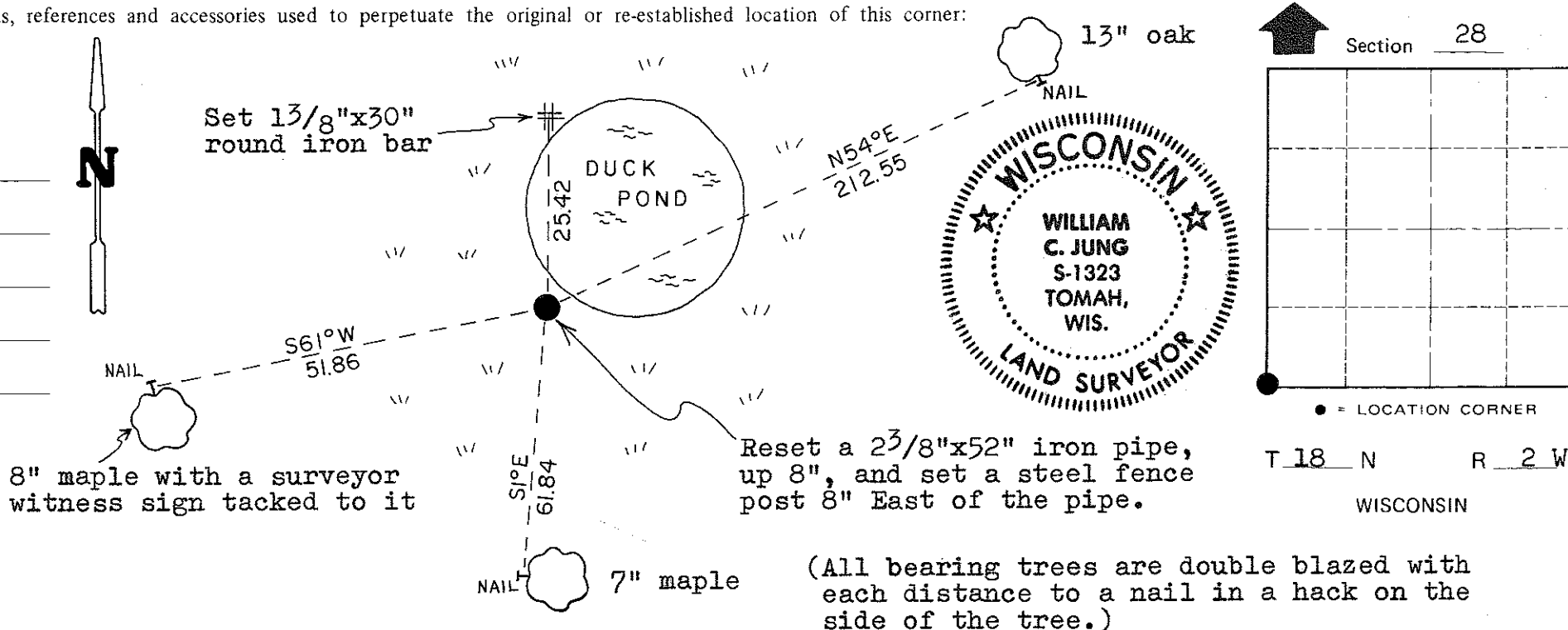
Approved: HARLEY A. SIME
MONROE CO. SURVEYOR

Description of corner and witness monuments, references and accessories used to perpetuate the original or re-established location of this corner:

Witnesses to corner location:

- William C. Jung
- Dennis Perrigo
- 1982 crew:
- William C. Jung
- Bryan Meyer
- Gary Dechant

COUNTY SURVEYOR FORM NO. 1



SURVEY CONTROL ORDER

Horizontal	_____
Vertical	_____

WISCONSIN COORDINATE SYSTEM

Corner	East (X)	North (Y)	Elevation (Z)	Zone
Control Sta. Name				

City, Village or Town Greenfield
 County of Monroe
Wisconsin