

CERTIFICATE

I, Nicholas M. Hillmer, do hereby certify that this document and the data contained herein was prepared by me or under my direct supervision and that I am a duly Licensed Land Surveyor under the laws of the State of Wisconsin.

Dated this 23rd day of May, 2013



Nicholas M. Hillmer, P.L.S. 2909
Anderson Engineering of Minnesota, LLC.

CERTIFIED LAND CORNER

History of corner established since Original Government Survey

The 1945 McCoy boundary notes show a corner at this location. In July of 1979 William Jung set a P.K nail equidistant between the section corners and on line with the fence line to the north. In November of 1997 Douglas Malliet set a small gauge railroad spike using ties taken prior to road construction.

Description of evidence found

On January 24th, 2013, Anderson Engineering of Minnesota located the small gauge railroad spike (shank only, no head) approximately 6.5 feet north of the centerline of State Highway 21.

No. 21802282000



Description of corner and witness monuments, references and accessories used to perpetuate the original or re-established location of this corner:

Witnesses to corner location:

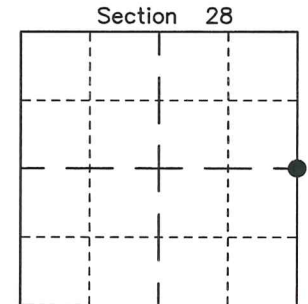
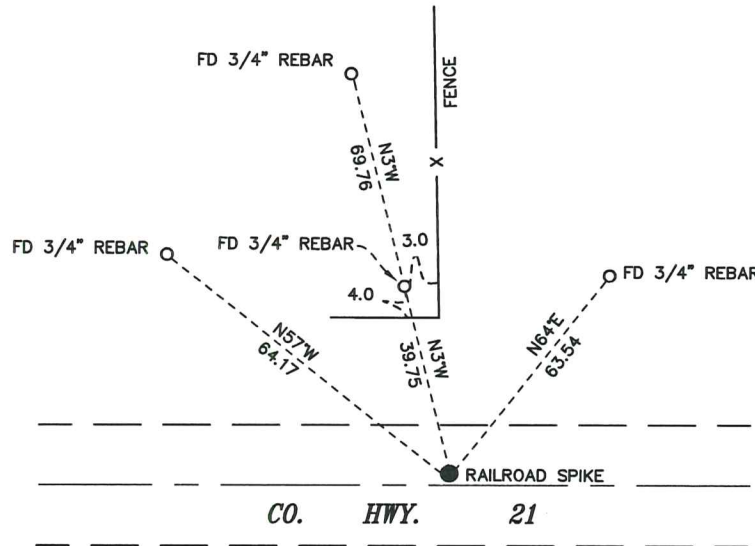
Nick Hillmer
Josh Oslund
Dan Greenwald



MONROE COUNTY
COORDINATE SYSTEM
NAD 1983 (2007)

RAILROAD SPIKE
Northing (Y) 402805.52
Easting (X) 678671.56

Base Station - 22 182W
Northing (Y) 408053.25
Easting (X) 679287.00



● = LOCATION CORNER
Corner I.D. E 1/4 28
T 18 N R 2 W
Town of Greenfield
Monroe County, WI.

All distances are shown in U.S. Survey Feet.
Bearings are for tie reference purposes only.
Coordinates were derived from RTK GNSS procedures.

I, William C. Jung, do hereby certify that on the 12th day of July 19 79, I found (evidence) (no evidence) of the West 1/4 corner of Section 27, T 18 N, R 2 W Fourth Principal Meridian, and I re-established said corner according to the Wisconsin Statutes as shown and described hereon.

Dated this 10th day of Feb. 19 81.

William C. Jung

William C. Jung, R.L.S. 1323
Title

History of corner establishment since Original Government Survey

Government surveyors measured to this corner during the McCoy boundary survey of WWII.

Description of corner evidence found:

Set the corner equidistant between the section corners and on line with the old line fence to the North. Set a P.K. nail.

UPDATE: This corner was perpetuated from ties taken prior to road construction. Set a new monument as indicated below, in bituminous pavement. New ties established as illustrated below.

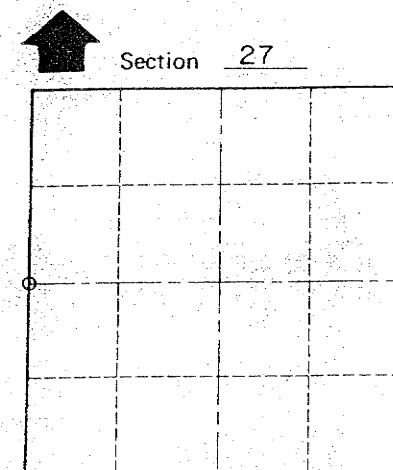
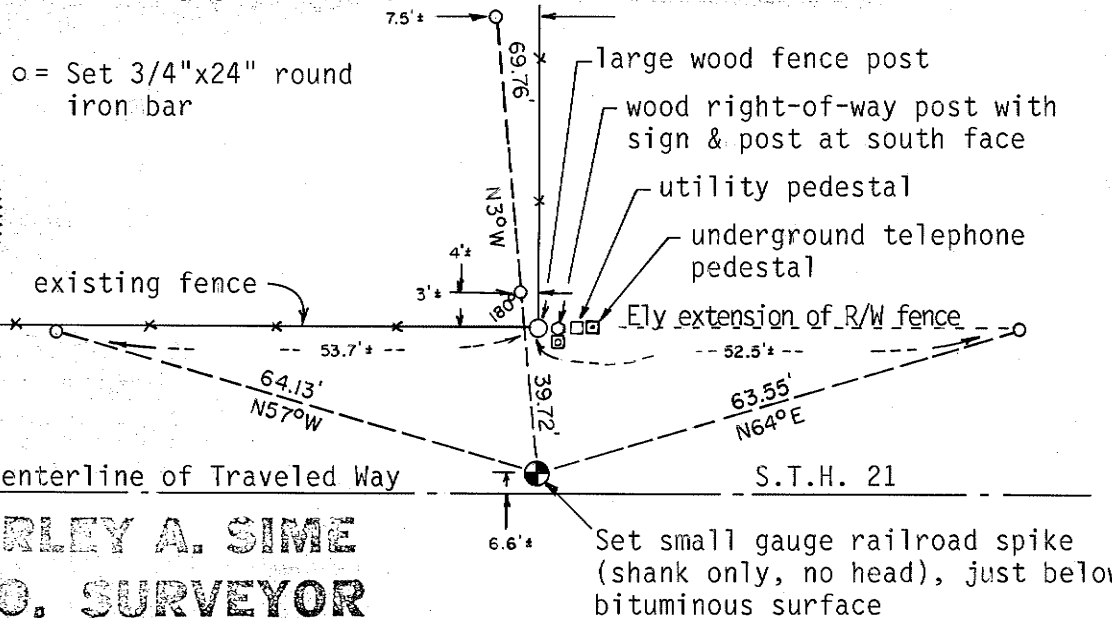
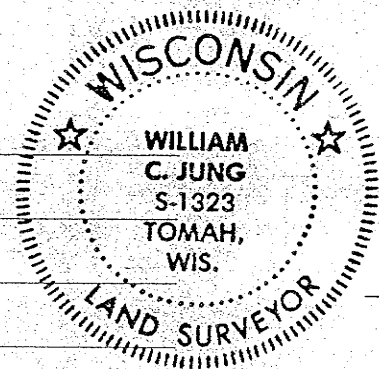
Douglas J. Malliet, R.L.S. #1266 14 November 1997

Description of corner and witness monuments, references and accessories used to perpetuate the original or re-established location of this corner:

Witnesses to corner location:

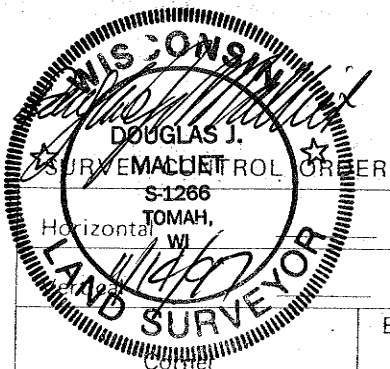
Jung
Webb

CREW: Douglas J. Malliet
Bryan H. Meyer
14 November 1997



O = LOCATION CORNER
T 18 N R 2 W
WISCONSIN

Approved: **HARLEY A. SIME**
MONROE CO. SURVEYOR



WISCONSIN COORDINATE SYSTEM

Control Sta. Name	East (X)	North (Y)	Elevation (Z)	Zone

City or Town Greenfield
County of Monroe

COUNTY SURVEYOR FORM NO. 1