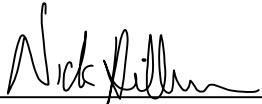


CERTIFICATE

I, Nicholas M. Hillmer, do hereby certify that this document and the data contained herein was prepared by me or under my direct supervision and that I am a duly Licensed Land Surveyor under the laws of the State of Wisconsin.

Dated this 23rd day of May, 2013



Nicholas M. Hillmer, P.L.S. 2909
Anderson Engineering of Minnesota, LLC.

CERTIFIED LAND CORNER

History of corner established since Original Government Survey

The 1940's McCoy boundary notes show a corner at this location.

Description of evidence found

On August 30th, 2012, Anderson Engineering of Minnesota located a rail with a US MIL RES NO 14 sign near the corner's location. The monument was not accepted as the corner. On April 19th, 2013, Anderson Engineering of Minnesota set a 3/4 inch drive monument with a 3 1/4 inch aluminum cap, stamped "FORT MCCOY BOUNDARY" "2013" "ANDERSON ENG. OF MN." The monument was set at the legal position following a completed section breakdown.

No. _____
21802281010

Description of corner and witness monuments, references and accessories used to perpetuate the original or re-established location of this corner:

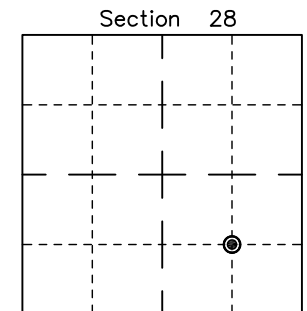
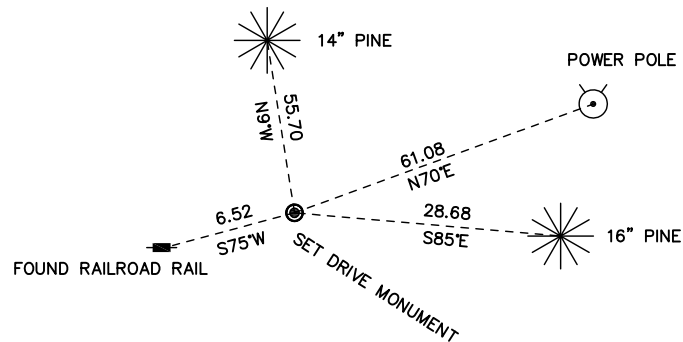
Witnesses to corner location:

Nick Hillmer
Josh Oslund
Dan Greenwald

MONROE COUNTY
COORDINATE SYSTEM
NAD 1983 (2007)

MCCOY DRIVE MONUMENT
Northing (Y) 401487.15
Easting (X) 677387.32

Base Station - 22 182W
Northing (Y) 408053.25
Easting (X) 679287.00



⊙ = LOCATION CORNER
Corner I.D. SE 1/16 28
T 18 N R 2 W
Town of Greenfield
Monroe County, WI.

All distances are shown in U.S. Survey Feet.
Ties are to 60D nails set in trees.
Bearings are for tie reference purposes only.
Coordinates were derived from RTK GNSS procedures.