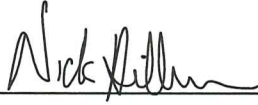


CERTIFICATE

I, Nicholas M. Hillmer, do hereby certify that this document and the data contained herein was prepared by me or under my direct supervision and that I am a duly Licensed Land Surveyor under the laws of the State of Wisconsin.

Dated this 23rd day of May, 2013



Nicholas M. Hillmer, P.L.S. 2909
Anderson Engineering of Minnesota, LLC.

CERTIFIED LAND CORNER

History of corner established since Original Government Survey

Webster Kenyon was at this location in June of 1883. In August of 1991 Bryan Meyer set a Harrison monument by using single proportionate measurements from the southwest corner and southeast corner of Section 28.

Description of evidence found

On January 21st, 2013, Anderson Engineering of Minnesota located the Harrison monument 0.4 foot below the ground surface. A witness post with survey marker sign was also present.

No. 21802280020



Description of corner and witness monuments, references and accessories used to perpetuate the original or re-established location of this corner:

Witnesses to corner location:

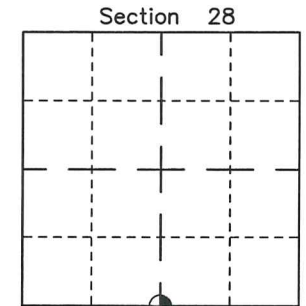
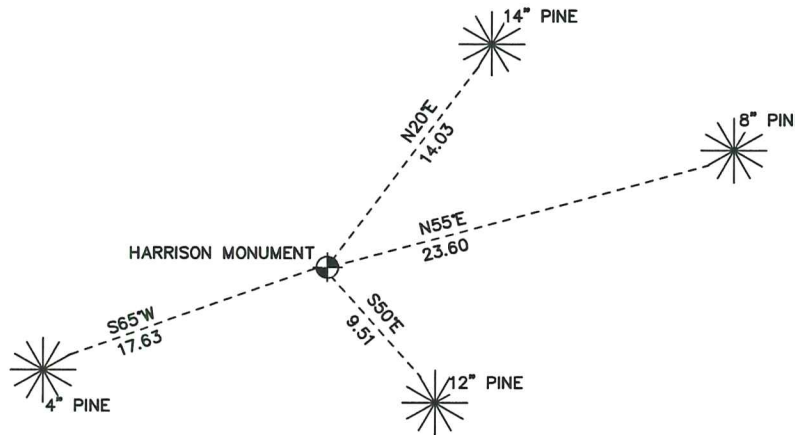
Nick Hillmer
Josh Oslund
Dan Greenwald



MONROE COUNTY
COORDINATE SYSTEM
NAD 1983 (2007)

HARRISON MONUMENT
Northing (Y) 400170.05
Easting (X) 676094.13

Base Station - 22 182W
Northing (Y) 408053.25
Easting (X) 679287.00



⊕ = LOCATION CORNER
Corner I.D. S 1/4 28
T 18 N R 2 W
Town of Greenfield
Monroe County, WI.

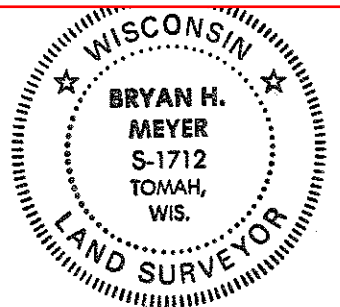
All distances are shown in U.S. Survey Feet.
Ties are to 60D nails set in trees.
Bearings are for tie reference purposes only.
Coordinates were derived from RTK GNSS procedures.

CERTIFICATE

CERTIFIED LAND CORNER

No. 108

21802280020



H. A. Sime and Associates
 P. O. Box 705
 Tomah, Wisconsin 54660
 Phone: (608)-372-5392

I, Bryan H. Meyer, do hereby certify that on the 28th day of August 19 91, I found ~~evidence~~ (no evidence) of the South 1/4 corner of Section 28, T 18 N, R 2 W Fourth Principal Meridian, and I re-established said corner according to the Wisconsin Statutes as shown and described hereon.

Dated this 11th day of Sept. 19 91.

Bryan H. Meyer

Deputy County Surveyor
Title

History of corner establishment since Original Government Survey
 Webster Kenyon was here in June of 1883.

Description of corner evidence found:

I re-established this corner on line and equidistant between the Southwest and Southeast corners of Section 28.

COUNTY SURVEYOR FORM NO. 1

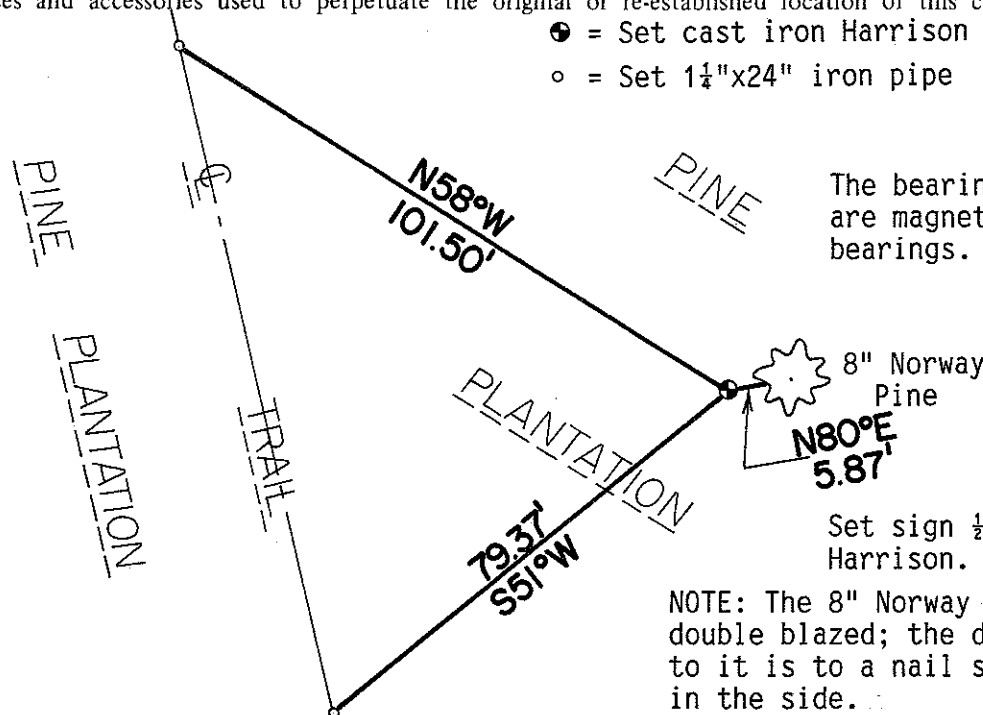
Description of corner and witness monuments, references and accessories used to perpetuate the original or re-established location of this corner:

Crew: Meyer, Kenworthy
 Date: August 28, 1991
 Weather: Sunny, Humid
 Witnesses to corner location:

John Kenworthy

Bryan H. Meyer

- = Set cast iron Harrison marker, flush
- = Set 1 1/2"x24" iron pipe



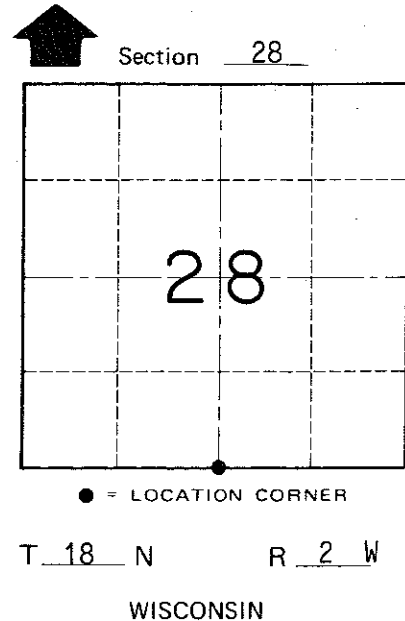
The bearings shown hereon are magnetic hand compass bearings.

8" Norway Pine

N80°E 5.87'

Set sign 1/2' North of Harrison.

NOTE: The 8" Norway Pine shown is double blazed; the distance shown to it is to a nail set in a hack in the side.



SURVEY CONTROL ORDER

Horizontal	_____
Vertical	_____

WISCONSIN COORDINATE SYSTEM

Corner	East (X)	North (Y)	Elevation (Z)	Zone
Control Sta. Name				

~~City, Village or~~ Town of Greenfield

County of Monroe