

CERTIFICATE

CERTIFIED LAND CORNER

No. 98

**21802272000**

I, William C. Jung, do hereby certify that on the 13th day of December 1974, I found (evidence) (~~no evidence~~) of the W 1/4 corner of Section 26, T 18 N, R 2 W, Fourth Principal Meridian, and I re-established said corner according to the Wisconsin Statutes as shown and described hereon.

Dated this 23rd day of Nov. 1977.

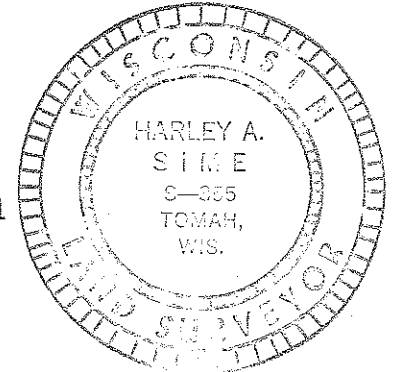
William C. Jung, R.L.S. 1323  
Crew Chief, County Surveyor's  
Title Office

History of original corner establishment:

Fred Zietlow set a 2" iron pipe at this corner in 1968.  
 H.A. Sime used this iron pipe in a December, 1974 survey.

Description of corner evidence found:

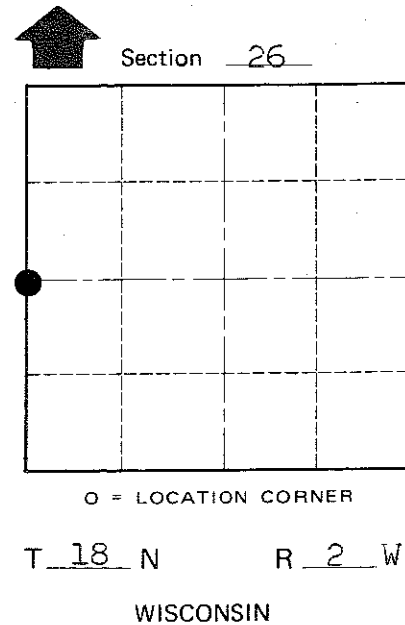
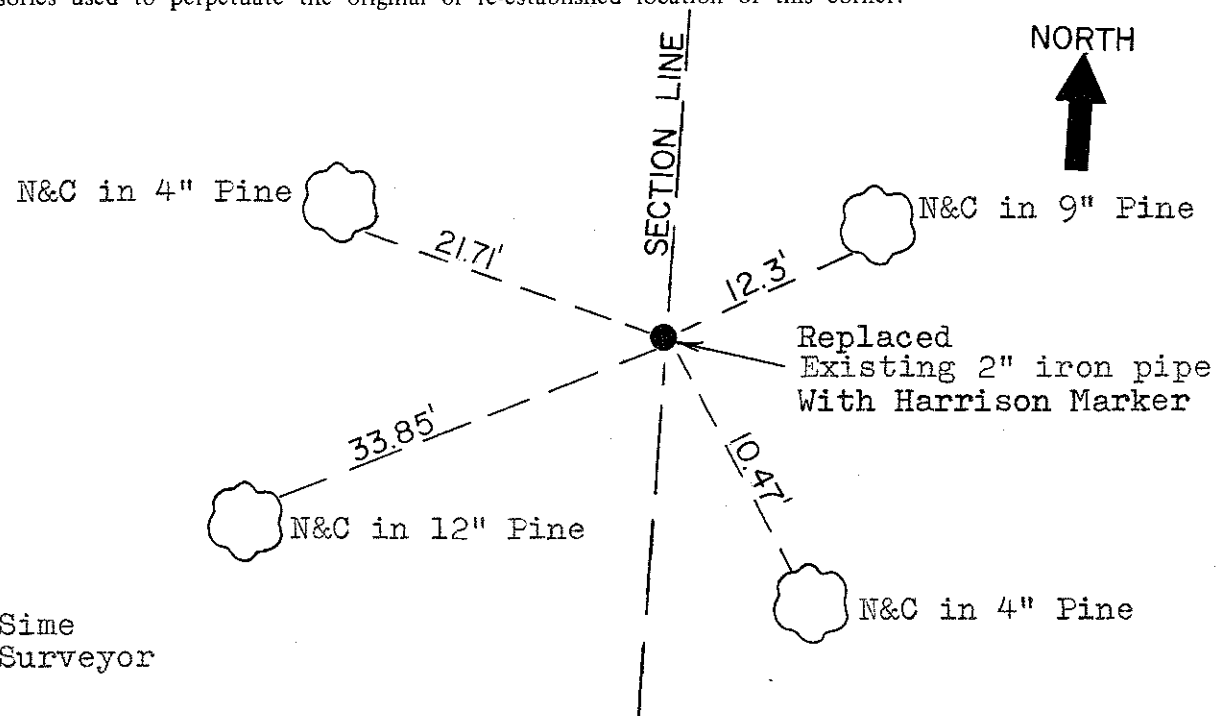
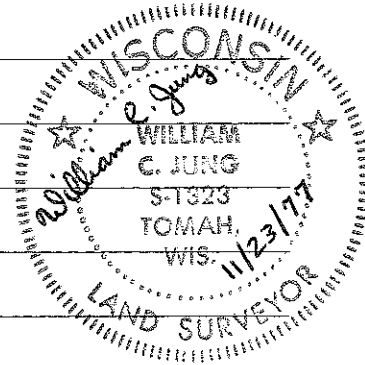
Found 2" iron pipe set by Fred Zietlow in 1968. He intersected the centerline of S.T.H. "21" with the Section line.  
 Removed the iron pipe and replaced it with a Harrison marker in June of 1979.



Description of corner and witness monuments, references and accessories used to perpetuate the original or re-established location of this corner:

Witnesses to corner location:

W. Jung  
D. Malliet  
A. Lueck  
C. Pietz



Approved: Harley Sime  
 County Surveyor

SURVEY CONTROL ORDER

Horizontal	_____
Vertical	_____

WISCONSIN COORDINATE SYSTEM

Corner	East (X)	North (Y)	Elevation (Z)	Zone
Control Sta. Name				

City, Village or Town Greenfield  
 County of Monroe

COUNTY SURVEYOR FORM NO. 1