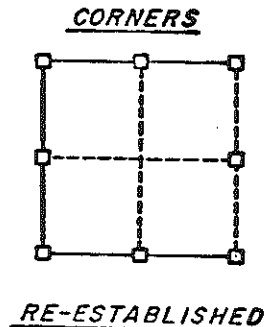
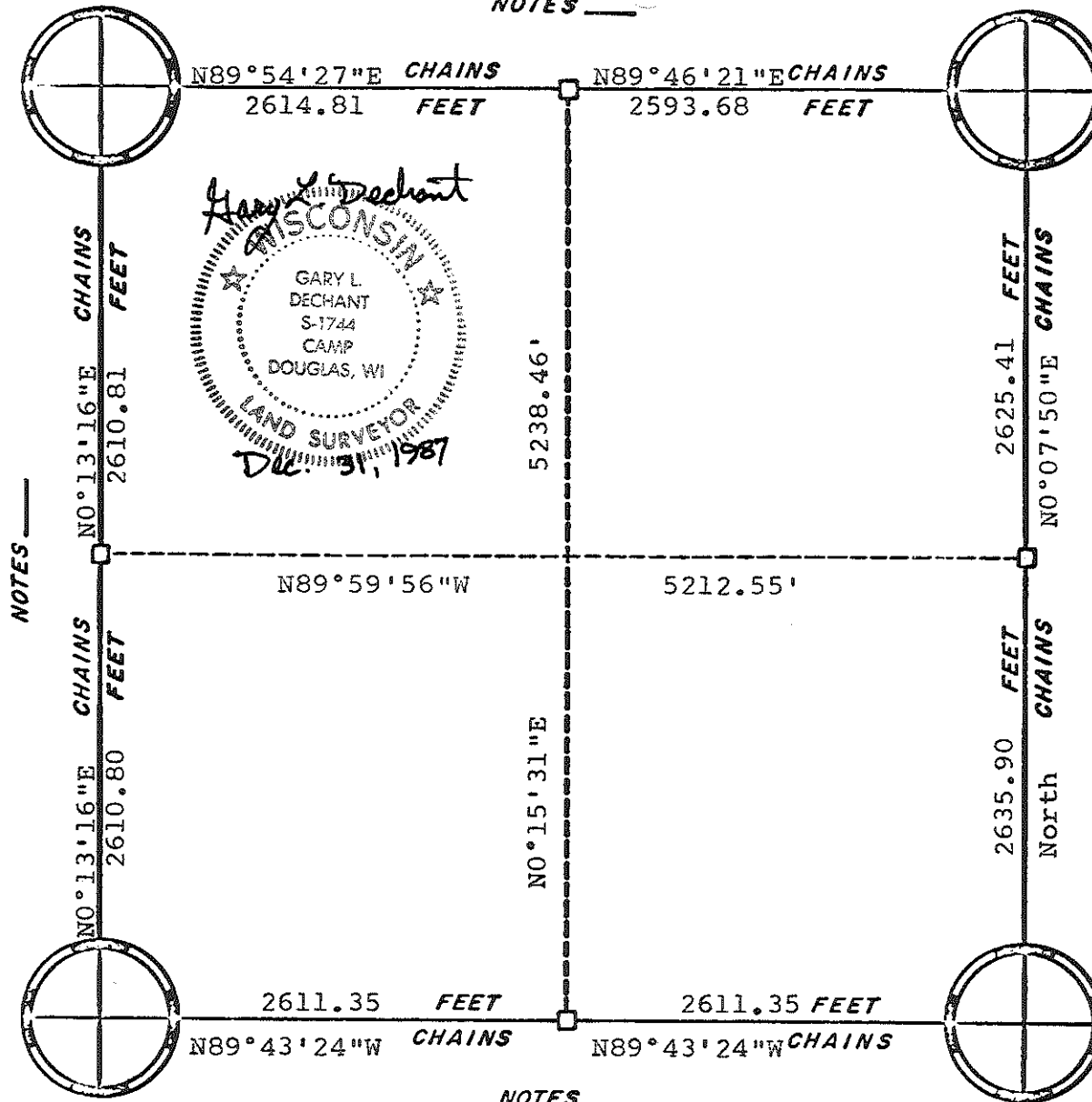


NOTES _____



NOTES _____

NOTES _____

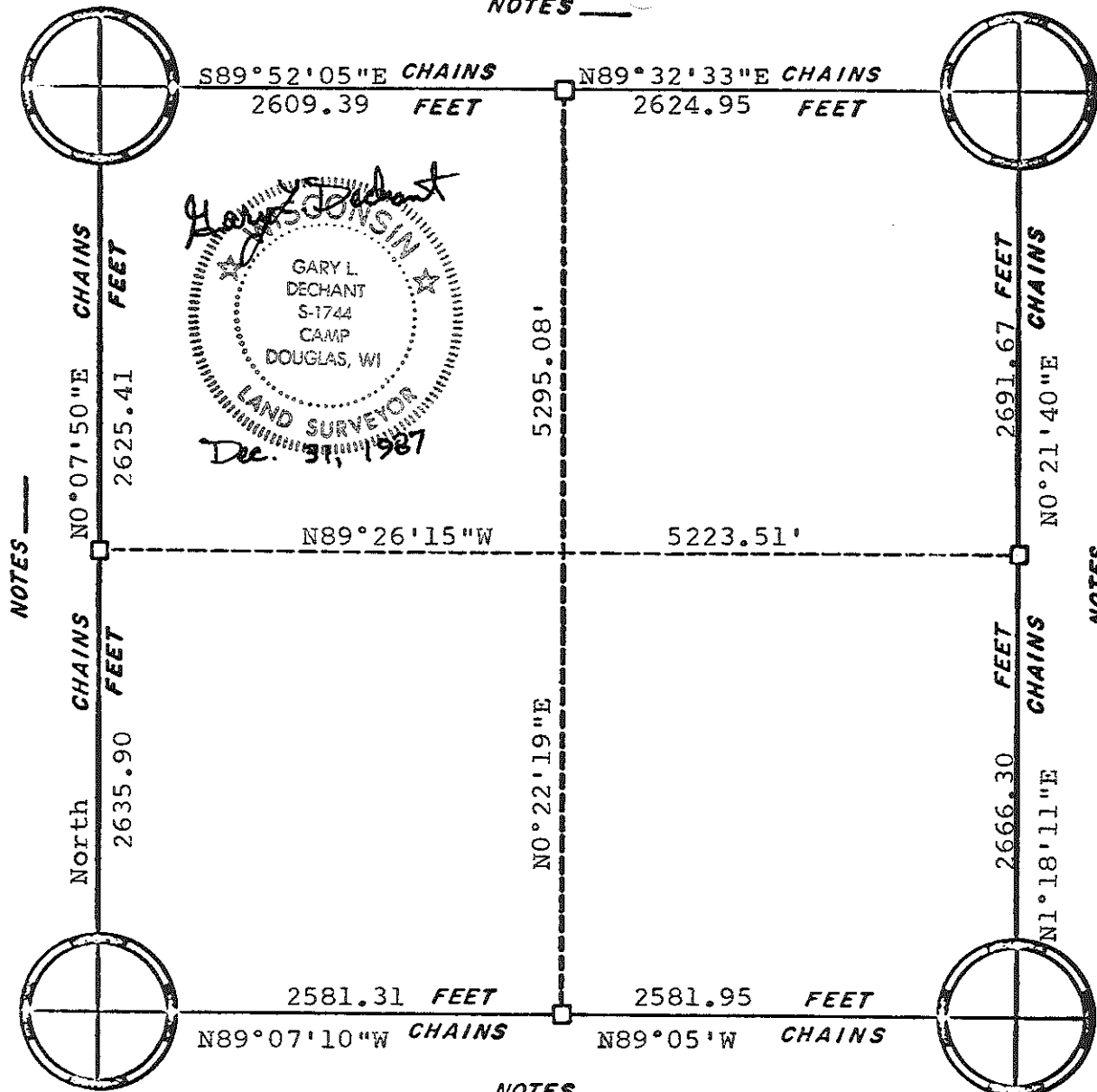
NOTES _____

ORIGINAL SURVEY DATA

BY _____
DATE _____

SURVEYED BY	CONTRACT DATE	COUNTY	MONROE	TOWN-VILLAGE-CITY	SECTION	TOWNSHIP	RANGE
G. L. Dechant	Dec. 1987			Greenfield	21	18N	2W

NOTES _____



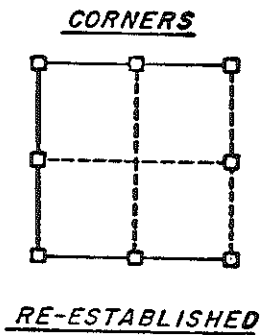
Gary L. Dechant
 GARY L. DECHANT
 S-1744
 CAMP
 DOUGLAS, WI
 LAND SURVEYOR
 Dec. 31, 1987



NOTES _____

NOTES _____

NOTES _____

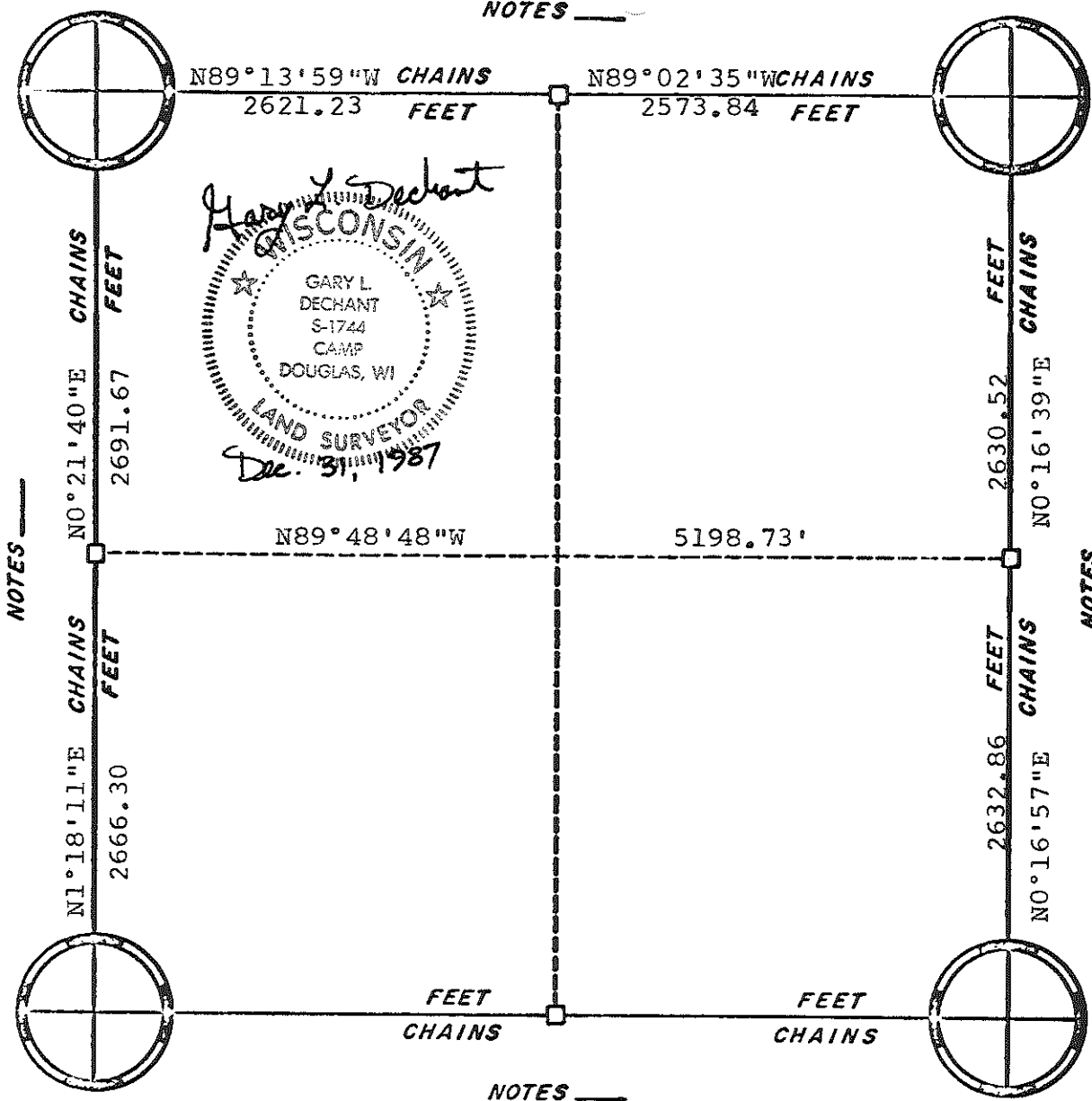


ORIGINAL SURVEY DATA

BY _____
 DATE _____

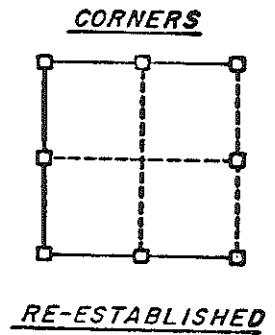
SURVEYED BY	CONTRACT DATE	COUNTY MONROE	TOWN-VILLAGE-CITY	SECTION	TOWNSHIP	RANGE
G.L. Dechant	Dec. 1987	██████████	Greenfield	22	18N	2W

NOTES _____



NOTES _____

NOTES _____



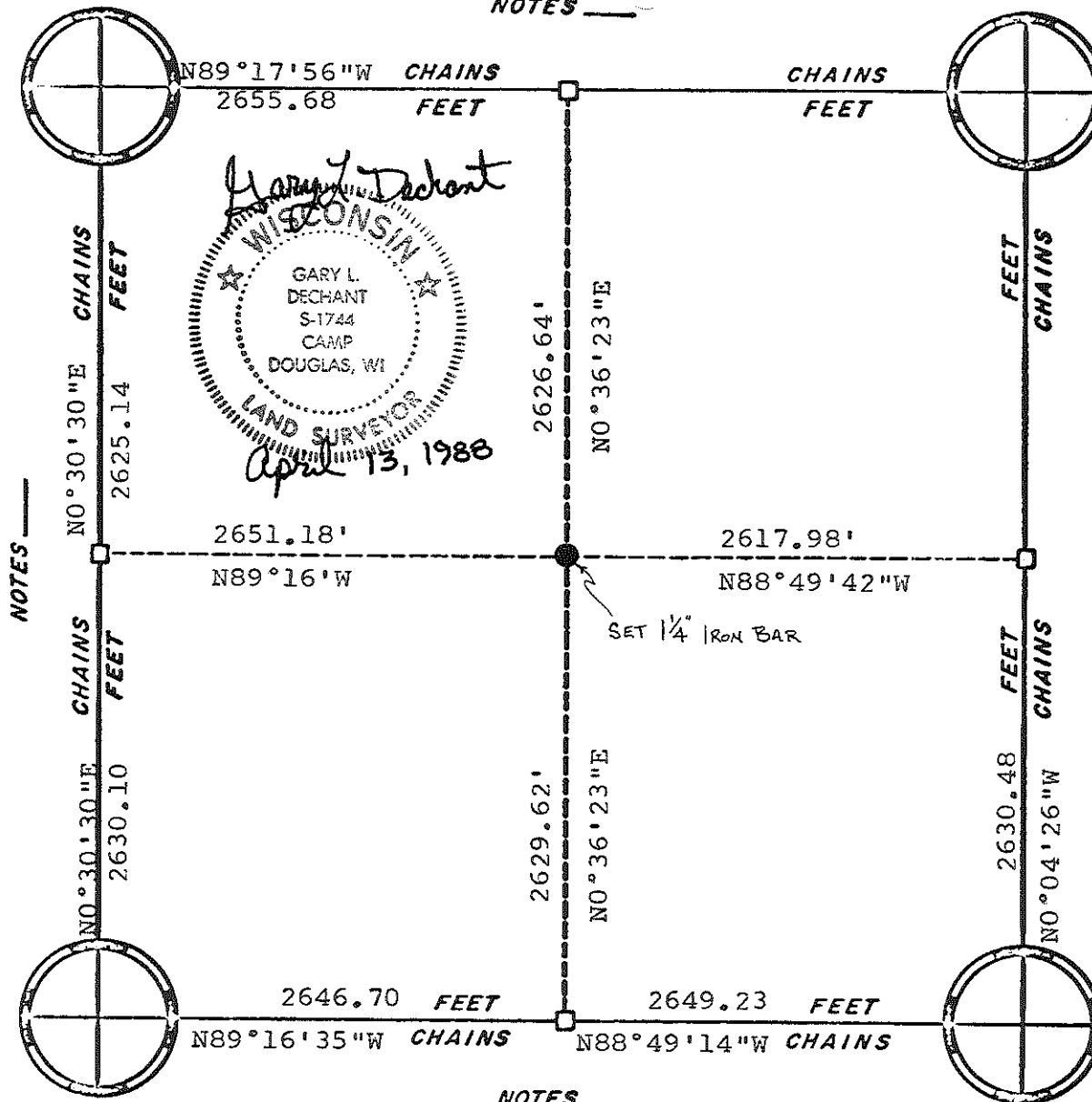
NOTES _____

ORIGINAL SURVEY DATA

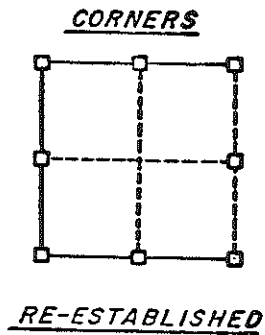
BY _____
DATE _____

SURVEYED BY G.L. Dechant	CONTRACT DATE Dec. 1987	COUNTY MONROE [REDACTED]	TOWN-VILLAGE-CITY Greenfield	SECTION 23	TOWNSHIP 18N	RANGE 2W
-----------------------------	----------------------------	-----------------------------	---------------------------------	---------------	-----------------	-------------

NOTES _____



Harry Dechant
 GARY L. DECHANT
 S-1744
 CAMP DOUGLAS, WI
 LAND SURVEYOR
 April 13, 1988



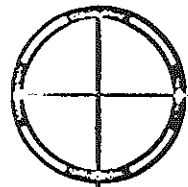
ORIGINAL SURVEY DATA

BY _____
 DATE _____

SURVEYED BY G. L. Dechant	CONTRACT DATE April 13, 1988	COUNTY MONROE ██████████	TOWN-VILLAGE-CITY Greenfield	SECTION 25	TOWNSHIP 18N	RANGE 2W
------------------------------	---------------------------------	-----------------------------	---------------------------------	---------------	-----------------	-------------

NOTES

Harrison Monument

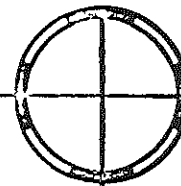


N87°39'41"E
CHAINS
2623.39 FEET

Harrison Monument

5246.78'
CHAINS

2623.39 FEET



Harrison Monument



N1°57'45"W
CHAINS
2615.00 FEET

5259.31'
2619.69'

2624.36 FEET
CHAINS

5253.66'

Iron Pipe

NOTES

N87°45'46"E
2617.14'

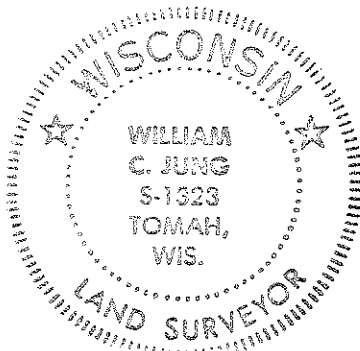
5234.28'
2617.14'

NOTES

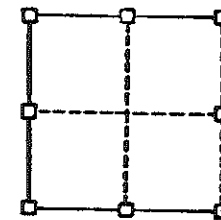
N1°57'18"W
CHAINS
2649.94 FEET

N1°49'23"W
2639.62'

2629.30 FEET
CHAINS
N1°41'16"W



CORNERS



RE-ESTABLISHED

Concrete Post

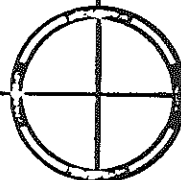


2611.00 FEET
CHAINS

NOTES

2611.01 FEET
CHAINS

5222.01'



Harrison Monument

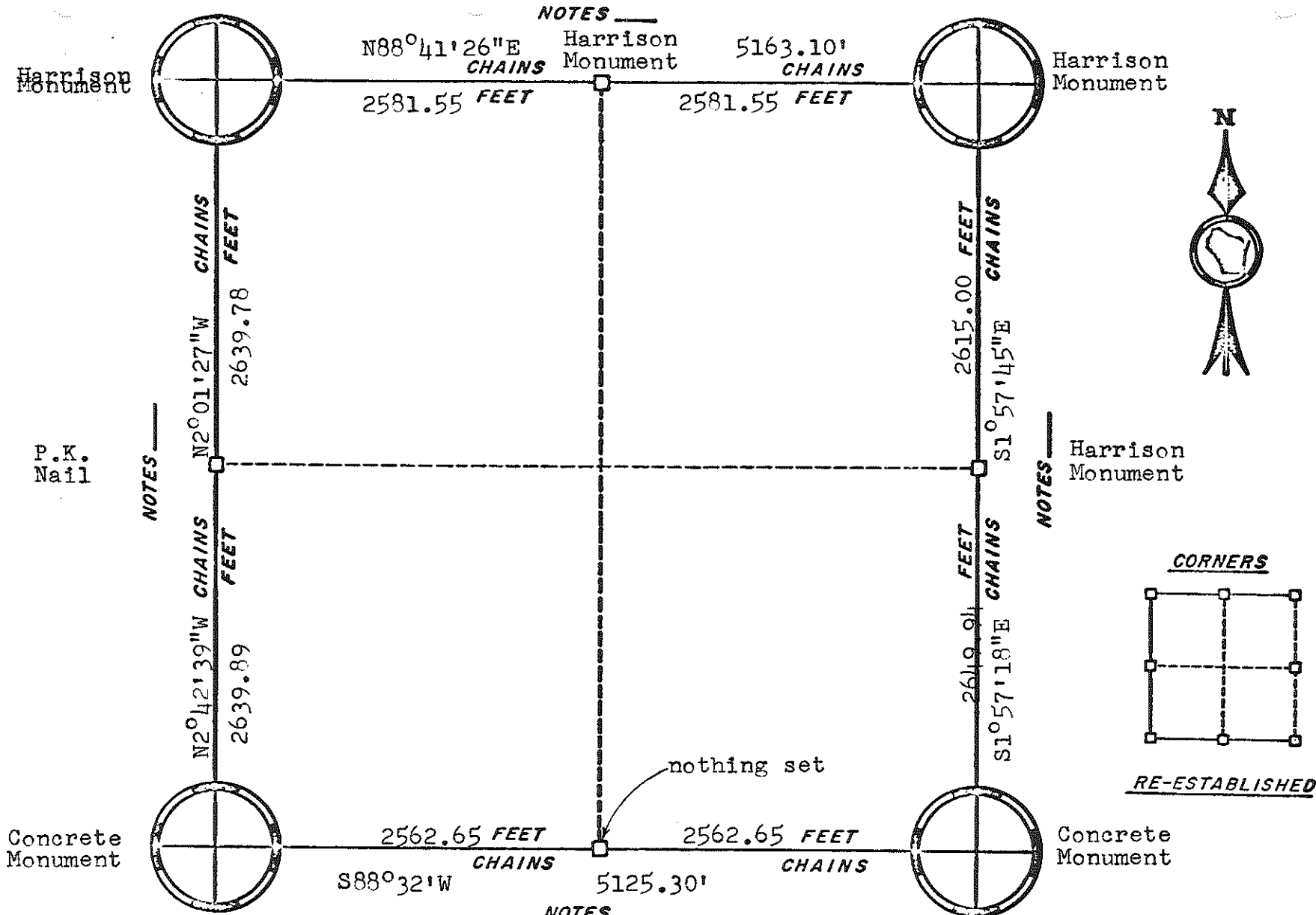
ORIGINAL SURVEY DATA

BY

W.C. Jung

DATE 3/5/79

SURVEYED BY W. C. Jung	CONTRACT DATE Dec. 1974	COUNTY MONROE	TOWN-VILLAGE-CITY Greenfield	SECTION 26	TOWNSHIP 18N	RANGE 2W
---------------------------	----------------------------	---------------	---------------------------------	---------------	-----------------	-------------

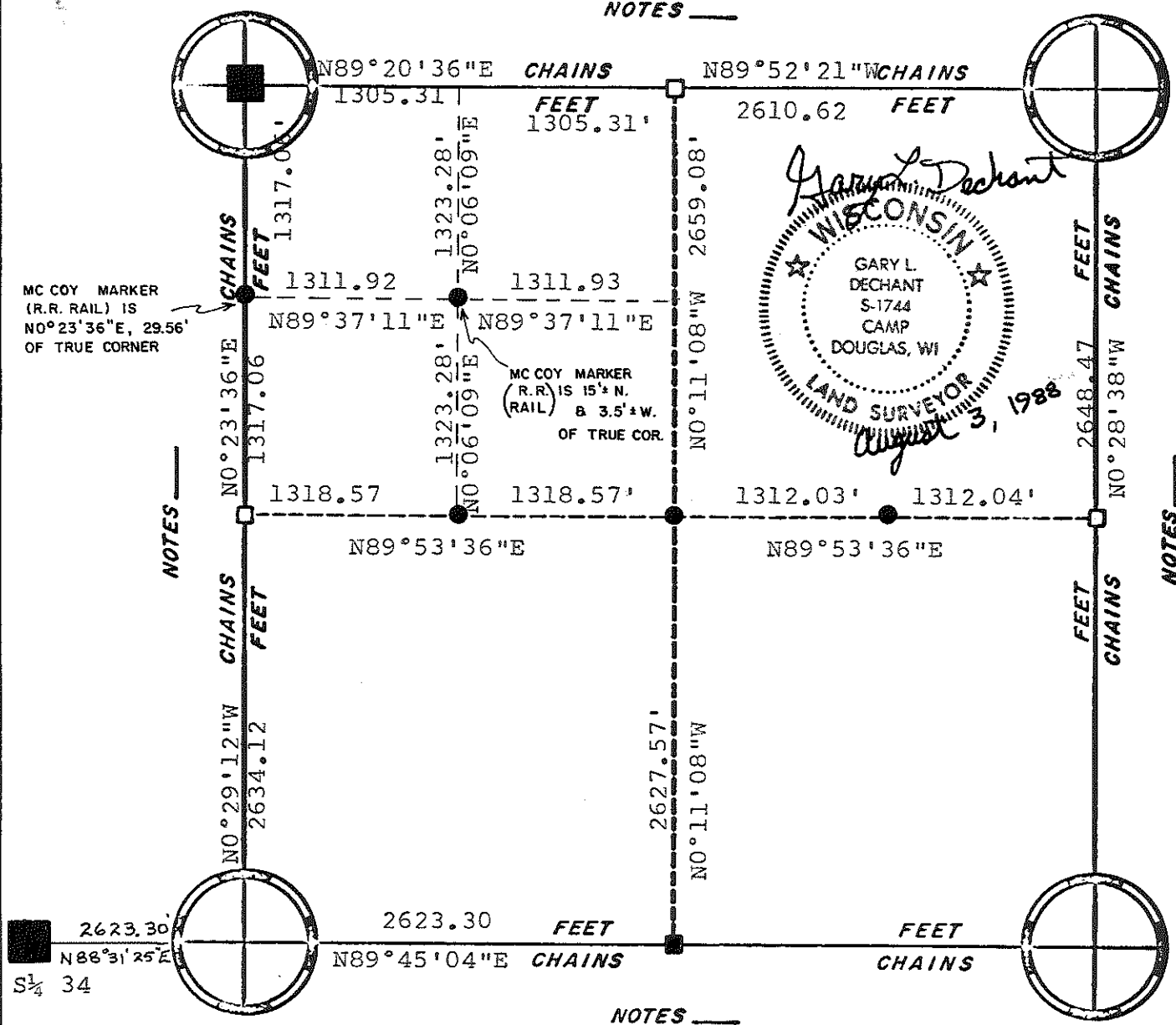


ORIGINAL SURVEY DATA

BY _____
DATE 3/13/81

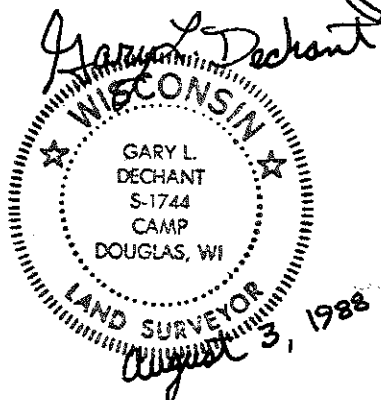
SURVEYED BY W. C. Jung	CONTRACT DATE July, 1979	COUNTY MONROE	TOWN- GREENFIELD Greenfield	SECTION 27	TOWNSHIP T18N	RANGE R2W
---------------------------	-----------------------------	------------------	---	---------------	------------------	--------------

NOTES _____



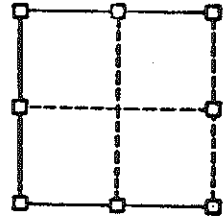
MC COY MARKER
(R.R. RAIL) IS
N0°23'36"E, 29.56'
OF TRUE CORNER

MC COY MARKER
(R.R.) IS 15'± N.
(RAIL) B 3.5'± W.
OF TRUE COR.



- = set 1 1/2" x 30" I.B.
- = Ex. Concrete McCoy marker

CORNERS



RE-ESTABLISHED

NOTES _____

NOTES _____

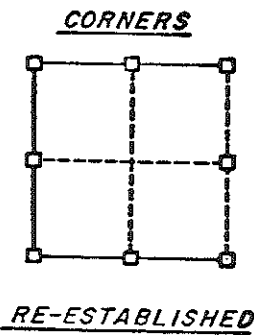
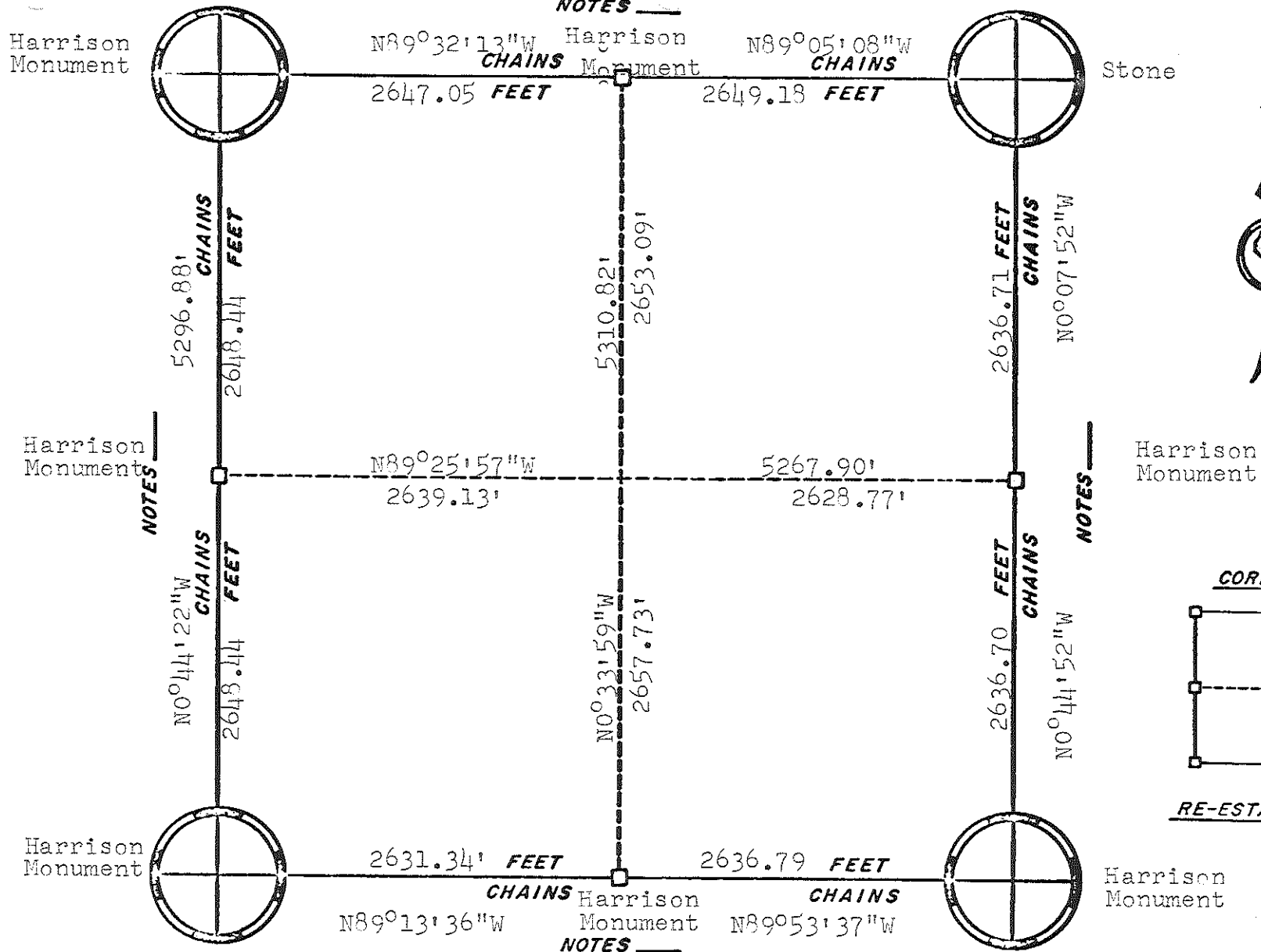
NOTES _____

ORIGINAL SURVEY DATA

BY _____
DATE _____

SURVEYED BY G.L. Dechant	CONTRACT DATE Aug. 3, 1988	COUNTY MONROE [REDACTED]	TOWN-VILLAGE-CITY Greenfield	SECTION 35	TOWNSHIP 18N	RANGE 2W
-----------------------------	-------------------------------	-----------------------------	---------------------------------	---------------	-----------------	-------------

NOTES _____



ORIGINAL SURVEY DATA

BY *H.L.D.*

DATE 3-5-79

SURVEYED BY D. J. Malliet	CONTRACT DATE June 1976	COUNTY MONROE	TOWN-VILLAGE-CITY Greenfield	SECTION 36	TOWNSHIP 18N	RANGE 2W
------------------------------	----------------------------	------------------	---------------------------------	---------------	-----------------	-------------