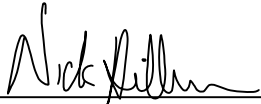


CERTIFICATE

I, Nicholas M. Hillmer, do hereby certify that this document and the data contained herein was prepared by me or under my direct supervision and that I am a duly Licensed Land Surveyor under the laws of the State of Wisconsin.

Dated this 23rd day of May, 2013



Nicholas M. Hillmer, P.L.S. 2909
Anderson Engineering of Minnesota, LLC.

CERTIFIED LAND CORNER

History of corner established since Original Government Survey

Gary Dechant set a 1 1/4 inch iron rod at this location in 1988 while completing a section breakdown.

Description of evidence found

On April 16, 2013, Anderson Engineering located Dechant's iron rod 0.70 feet north and 0.35 feet east of the legal corner. On April 16th, 2013, Anderson Engineering of Minnesota set a 30 inch Berntsen aluminum dig monument with a 3 1/4 inch aluminum cap, stamped "FORT MCCOY BOUNDARY" "2013" "ANDERSON ENG. OF MN." The monument was set midway online between the west quarter corner and the center of Section 35. Dechant's iron rod is now a witness corner.

No. _____
21802352030

Description of corner and witness monuments, references and accessories used to perpetuate the original or re-established location of this corner:

Witnesses to corner location:

Nick Hillmer
Josh Oslund
Dan Greenwald

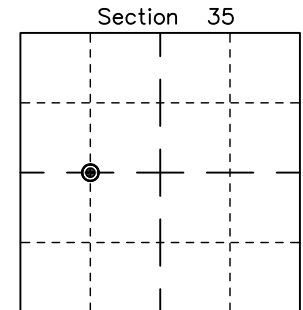
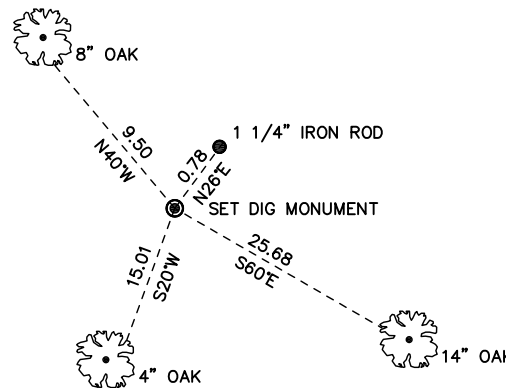
MONROE COUNTY
COORDINATE SYSTEM
NAD 1983 (2007)

MCCOY DIG MONUMENT
Northing (Y) 397503.22
Easting (X) 685148.40

Base Station - 22 182W
Northing (Y) 408053.25
Easting (X) 679287.00



FIRE BREAK



● = LOCATION CORNER
Corner I.D. CW 1/16 35
T 18 N R 2 W
Town of Greenfield
Monroe County, WI.

All distances are shown in U.S. Survey Feet.
Ties are to 60D nails set in trees.
Bearings are for tie reference purposes only.
Coordinates were derived from RTK GNSS procedures.