

CERTIFICATE

I, Nicholas M. Hillmer, do hereby certify that this document and the data contained herein was prepared by me or under my direct supervision and that I am a duly Licensed Land Surveyor under the laws of the State of Wisconsin.

Dated this 23rd day of May, 2013



Nicholas M. Hillmer, P.L.S. 2909
Anderson Engineering of Minnesota, LLC.

CERTIFIED LAND CORNER

History of corner established since Original Government Survey

Kenyon was here in February of 1866. Schroeder was here in May of 1883. Fred Holden was here in January of 1901. Ray Hurlburt was here in November of 1940 and set an auto steering post at the corner. In November of 1981 Harley Sime found and accepted Hurlburt's auto steering post as the corner.

Description of evidence found

On February 21st, 2013, Anderson Engineering of Minnesota located the auto steering post 2.0 feet north of a fence corner in debris of a fallen tree. The monument is halfway up a ridge line between two draws.

No. 21802350020



Description of corner and witness monuments, references and accessories used to perpetuate the original or re-established location of this corner:

Witnesses to corner location:

Nick Hillmer
Josh Oslund
Dan Greenwald

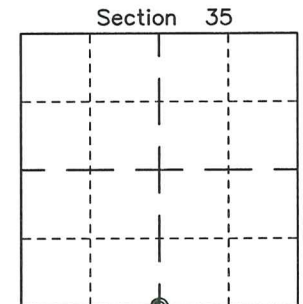
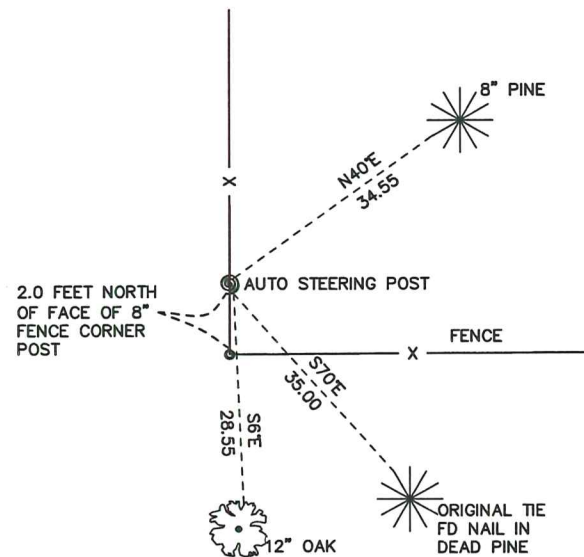


MONROE COUNTY
COORDINATE SYSTEM
NAD 1983 (2007)

AUTO STEERING POST
Northing (Y) 394885.11
Easting (X) 686488.36

Base Station - 22 182W
Northing (Y) 408053.25
Easting (X) 679287.00

All distances are shown in U.S. Survey Feet.
Ties are to 60D nails set in trees.
Bearings are for tie reference purposes only.
Coordinates were derived from RTK GNSS procedures.



= LOCATION CORNER
Corner I.D. S 1/4 35
T 18 N R 2 W
Town of Greenfield
Monroe County, WI.

21802350020

I, Harley A. Sime, do hereby certify that on the second day of November 1981, I found (evidence) () of the N¹/₄ corner of Section 2, T 17 N, R 2W Fourth Principal Meridian, and I re-established said corner according to the Wisconsin Statutes as shown and described hereon.

Dated this 14th day of Jan. 1982.

Harley A. Sime

Monroe County Surveyor

Approved: HARLEY A. SIME

MONROE CO. SURVEYOR

Description of corner and witness monuments, references and accessories used to perpetuate the original or re-established location of this corner:

History of corner establishment since Original Government Survey

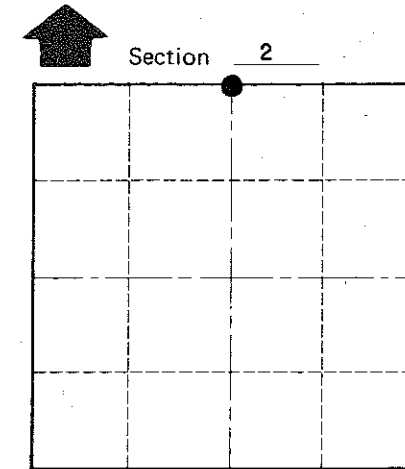
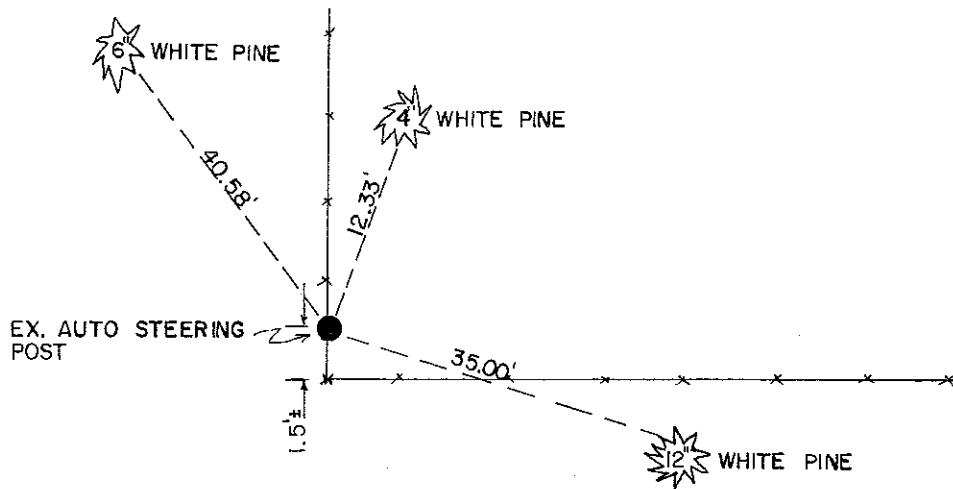
Kenyon was here in Feb. 1866
Schroeder was here in May of 1883
Fred Holden was here in January of 1901.
Ray Hurlburt was here in Nov. of 1940 and set an auto steering post at corner.
Description of corner evidence found:
Found Hurlburts Auto Steering Post in good condition and excepted same as corner.

COUNTY SURVEYOR FORM NO. 1

Witnesses to corner location:

Carlton Pietz

Gary Dechant



● = LOCATION CORNER

T 17 N R 2W

WISCONSIN

SIGN PLACED 5-7-90 *H. Sime*

SURVEY CONTROL ORDER

Horizontal	_____
Vertical	_____

WISCONSIN COORDINATE SYSTEM

Corner	East (X)	North (Y)	Elevation (Z)	Zone
Control Sta. Name				

~~City, Village or~~ Town Adrian

County of Monroe