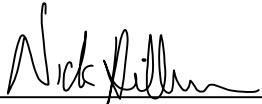


**CERTIFICATE**

I, Nicholas M. Hillmer, do hereby certify that this document and the data contained herein was prepared by me or under my direct supervision and that I am a duly Licensed Land Surveyor under the laws of the State of Wisconsin.

Dated this 23rd day of May, 2013



Nicholas M. Hillmer, P.L.S. 2909  
Anderson Engineering of Minnesota, LLC.

**CERTIFIED LAND CORNER**

History of corner established since Original Government Survey

The 1940's McCoy boundary notes show a corner at this location.

Description of evidence found

On September 26th, 2012, Anderson Engineering of Minnesota located a rail with a US MIL RES NO 14 sign near the corner's location. On April 16th, 2013, Anderson Engineering of Minnesota set a 30 inch Berntsen dig monument with a 3 1/4 inch aluminum cap, stamped "FORT MCCOY BOUNDARY" "2013" "ANDERSON ENG. OF MN." The monument was set midway online between the east quarter corner and the northeast corner of Section 34.

No. \_\_\_\_\_  
**21802343000**

Description of corner and witness monuments, references and accessories used to perpetuate the original or re-established location of this corner:

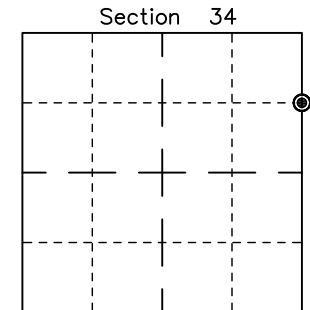
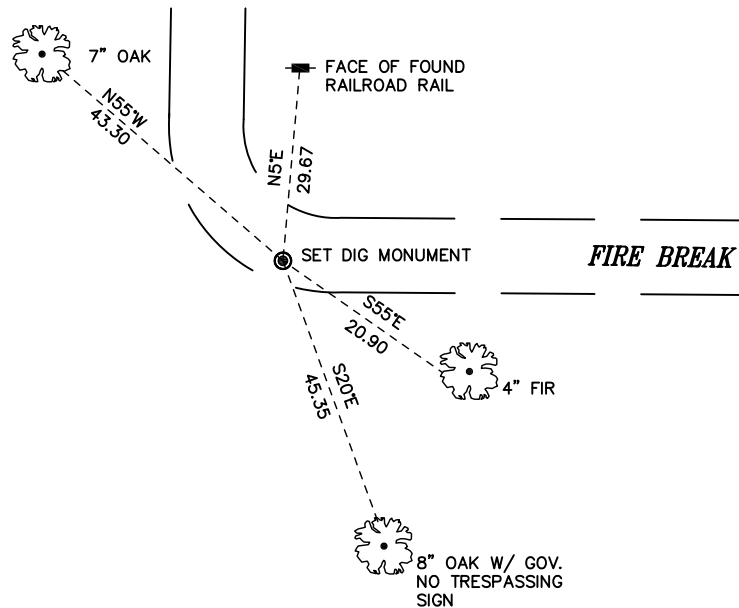
Witnesses to corner location:

Nick Hillmer  
Josh Oslund  
Dan Greenwald

MONROE COUNTY  
COORDINATE SYSTEM  
NAD 1983 (2007)

MCCOY DIG MONUMENT  
Northing (Y) 398811.21  
Easting (X) 683832.20

Base Station - 22 182W  
Northing (Y) 408053.25  
Easting (X) 679287.00



● = LOCATION CORNER  
Corner I.D. N 1/16 34  
T 18 N R 2 W  
Town of Greenfield  
Monroe County, WI.

All distances are shown in U.S. Survey Feet.  
Ties are to 60D nails set in trees.  
Bearings are for tie reference purposes only.  
Coordinates were derived from RTK GNSS procedures.