

# CERTIFICATE

I, Nicholas M. Hillmer, do hereby certify that this document and the data contained herein was prepared by me or under my direct supervision and that I am a duly Licensed Land Surveyor under the laws of the State of Wisconsin.

Dated this 23rd day of May, 2013



Nicholas M. Hillmer, P.L.S. 2909  
Anderson Engineering of Minnesota, LLC.

# CERTIFIED LAND CORNER

History of corner established since Original Government Survey

Fred Holden was here in January of 1901. In August of 1988, Gary Dechant set a Harrison monument half way between section corners and on line with the projected north-south fence from the north.

Description of evidence found

On February 22nd, 2013, Anderson Engineering of Minnesota located the Harrison monument 0.4 feet above grade and 0.8 feet northeast of a sign.

No. 21802342000



Description of corner and witness monuments, references and accessories used to perpetuate the original or re-established location of this corner:

Witnesses to corner location:

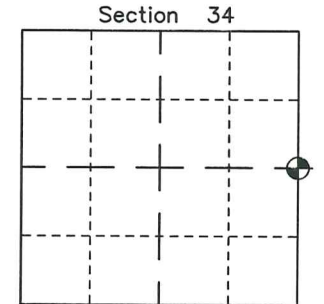
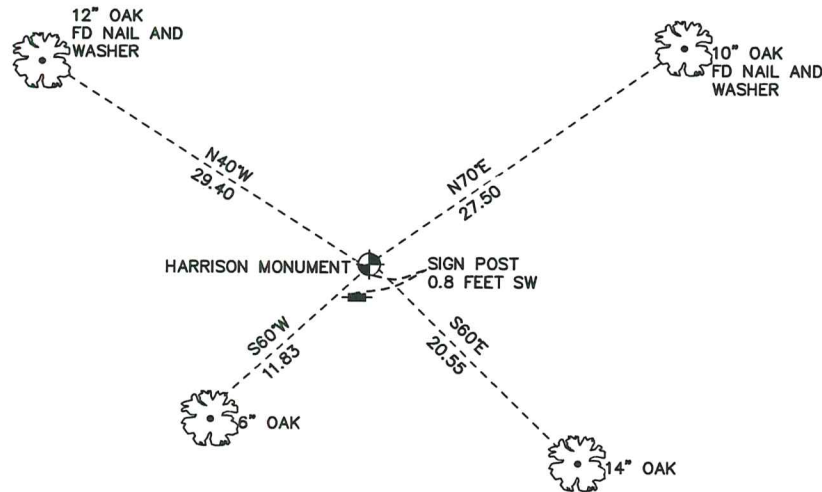
Nick Hillmer  
Josh Oslund  
Dan Greenwald



MONROE COUNTY  
COORDINATE SYSTEM  
NAD 1983 (2007)

HARRISON MONUMENT  
Northing (Y) 397494.09  
Easting (X) 683830.23

Base Station - 22 182W  
Northing (Y) 408053.25  
Easting (X) 679287.00



⊕ = LOCATION CORNER  
Corner I.D. E 1/4 34  
T 18 N R 2 W  
Town of Greenfield  
Monroe County, WI.

All distances are shown in U.S. Survey Feet.  
Ties are to 60D nails set in trees.  
Bearings are for tie reference purposes only.  
Coordinates were derived from RTK GNSS procedures.

21802342000

I, Gary L. Dechant, do hereby certify that on the 1st day of August 1988, I found (evidence) (no evidence) of the NW 1/4 corner of Section 35, T18 N, R2 W Fourth Principal Meridian, and I re-established said corner according to the Wisconsin Statutes as shown and described hereon.

History of corner establishment since Original Government Survey  
Fred Holden was here in Jan. of 1901.

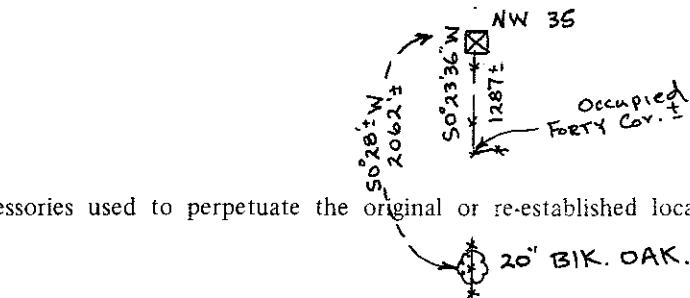
Description of corner evidence found:

Set half way between section corners and on line with projected north-south fence from the north.

Dated this 3rd day of Aug. 1988.

Gary L. Dechant

Reg. Land Surveyor, S-1744  
Title



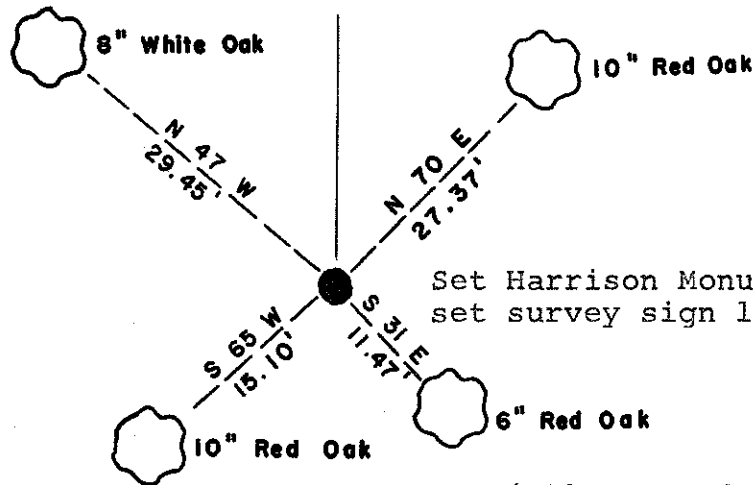
Description of corner and witness monuments, references and accessories used to perpetuate the original or re-established location of this corner:

8:30 A.M. - 90° F.

Witnesses to corner location:

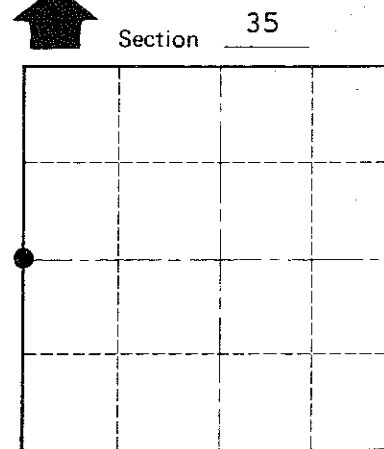
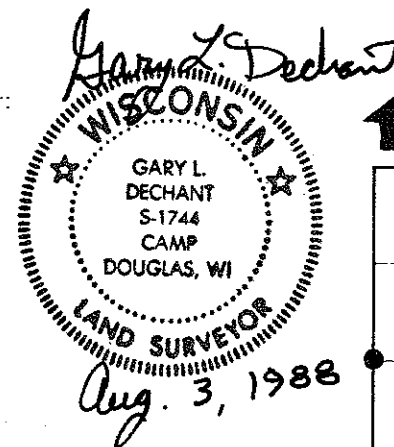
Timothy S. Frederick

Gary L. Dechant



Set Harrison Monument, set survey sign 1' south.

(All trees double blazed with N&C's set)



• = LOCATION CORNER

T 18 N R 2 W

WISCONSIN

SURVEY CONTROL ORDER

Horizontal	_____
Vertical	_____

WISCONSIN COORDINATE SYSTEM

Corner	East (X)	North (Y)	Elevation (Z)	Zone
Control Sta. Name				

City, Village or Town Greenfield

County of Monroe

COUNTY SURVEYOR FORM NO. 1