

CERTIFICATE

I, Nicholas M. Hillmer, do hereby certify that this document and the data contained herein was prepared by me or under my direct supervision and that I am a duly Licensed Land Surveyor under the laws of the State of Wisconsin.

Dated this 23rd day of May, 2013



Nicholas M. Hillmer, P.L.S. 2909
Anderson Engineering of Minnesota, LLC.

CERTIFIED LAND CORNER

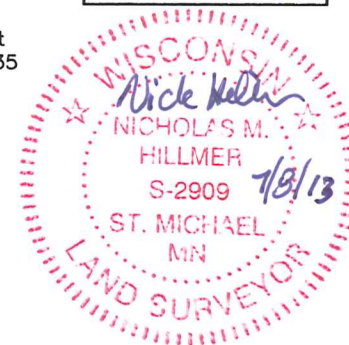
History of corner established since Original Government Survey

Fred Holden was here in January of 1901. In August of 1988, Gary Dechant set a Harrison monument half way between the south quarter of Section 35 and the south quarter of Section 34 and in line with projected east-west fence from the west. Dechant found remains of rusted north-south fence while digging for the monument.

Description of evidence found

On September 26th, 2012, Anderson Engineering of Minnesota did not find the Harrison due to earth work in the area. On May 8th 2013, Anderson Engineering of Minnesota set a new Harrison monument 22 feet west from the only remaining stable tie, a 3/4 inch solid bar. The position agrees with distances per the 1988 section breakdown.

No. 21802340000



Description of corner and witness monuments, references and accessories used to perpetuate the original or re-established location of this corner:

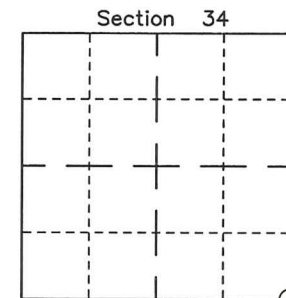
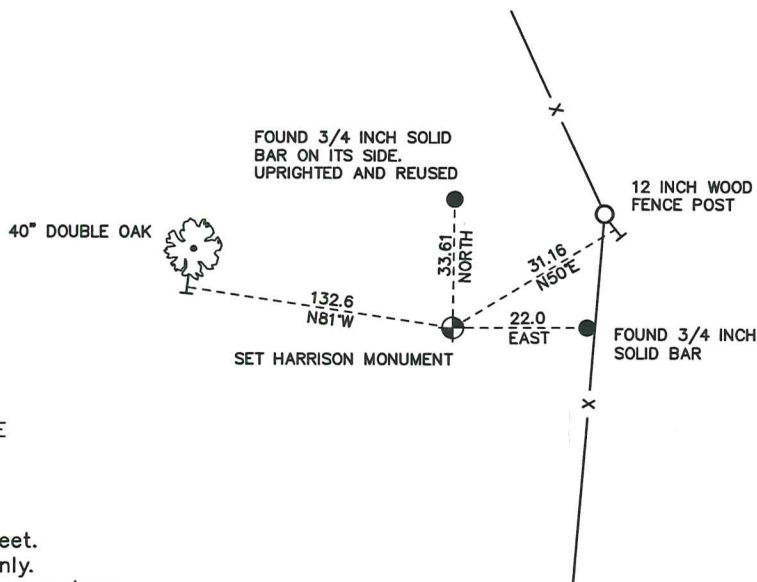
Witnesses to corner location:

Nick Hillmer
Kyle Anderson
Dan Greenwald

MONROE COUNTY
COORDINATE SYSTEM
NAD 1983 (2007)

HARRISON MONUMENT
Northing (Y) 394860.22
Easting (X) 683865.61

Base Station - 22 182W
Northing (Y) 408053.25
Easting (X) 679287.00



⊕ = LOCATION CORNER
Corner I.D. SE 34
T 18 N R 2 W
Town of Greenfield
Monroe County, WI.

All distances are shown in U.S. Survey Feet.
Bearings are for tie reference purposes only.
Coordinates were derived from RTK GNSS procedures.

CERTIFICATE

CERTIFIED LAND CORNER

No. 125

21802340000

I, Gary L. Dechant, do hereby certify that on the 1st day of August 1988, I found (evidence) ~~(no evidence)~~ of the SW corner of Section 35, T 18 N, R 2 W Fourth Principal Meridian, and I re-established said corner according to the Wisconsin Statutes as shown and described hereon.

Dated this 3rd day of Aug. 1988.

Gary L. Dechant

Reg. Land Surveyor, S-1744
Title

History of corner establishment since Original Government Survey

Fred Holden was here in Jan. of 1901.

Description of corner evidence found:

Set half way between the $S\frac{1}{4}$ corner of Section 35 and the $S\frac{1}{4}$ corner of Section 34 and in line with projected east-west fence from the west. Found remains of rusted north-south fence while digging hole for monument.

COUNTY SURVEYOR FORM NO. 1

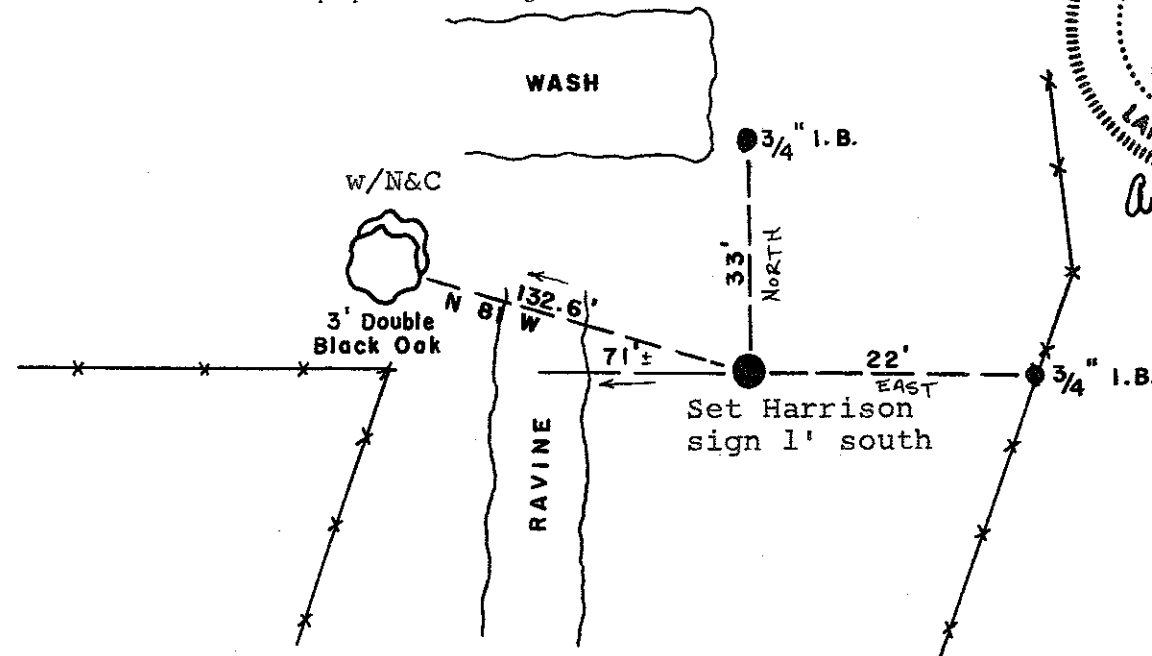
Description of corner and witness monuments, references and accessories used to perpetuate the original or re-established location of this corner:

WORST DROUGHT IN HISTORY.
HOT! 105°

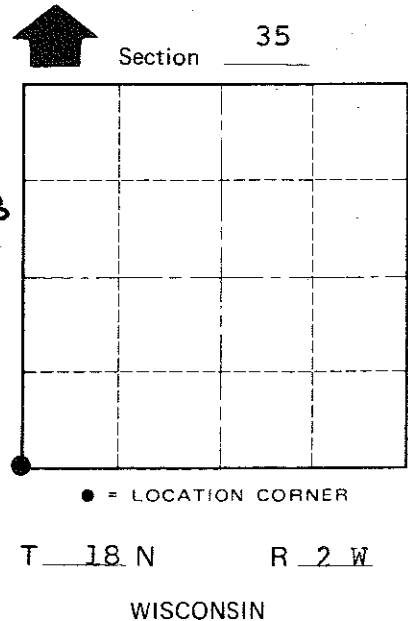
Witnesses to corner location:

Timothy S. Frederick

Gary L. Dechant



Gary L. Dechant
WISCONSIN
GARY L. DECHANT
S-1744
CAMP DOUGLAS, WI
LAND SURVEYOR
August 3, 1988



SURVEY CONTROL ORDER

Horizontal	_____
Vertical	_____

WISCONSIN COORDINATE SYSTEM

Corner	East (X)	North (Y)	Elevation (Z)	Zone
Control Sta. Name				

City, Village or Town Greenfield
County of Monroe