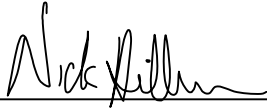


CERTIFICATE

I, Nicholas M. Hillmer, do hereby certify that this document and the data contained herein was prepared by me or under my direct supervision and that I am a duly Licensed Land Surveyor under the laws of the State of Wisconsin.

Dated this 23rd day of May, 2013



Nicholas M. Hillmer, P.L.S. 2909
Anderson Engineering of Minnesota, LLC.

CERTIFIED LAND CORNER

History of corner established since Original Government Survey

There is no known history of this corner.

Description of evidence found

On May 16th, 2013, Anderson Engineering of Minnesota set a 30 inch Berntsen aluminum dig monument with a 3 1/4 inch aluminum cap, stamped "FORT MCCOY BOUNDARY" "2013" "ANDERSON ENG. OF MN." The true corner location is in a stream. A witness corner was set 14.00 feet north of and online between the northeast corner of the Southeast Quarter of the Northeast Quarter and the northeast corner of Section 29.

No. 21802293000

Description of corner and witness monuments, references and accessories used to perpetuate the original or re-established location of this corner:

Witnesses to corner location:

Nick Hillmer
Josh Oslund
Kyle Anderson

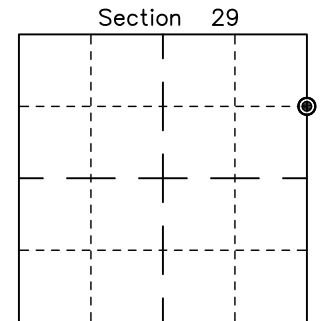
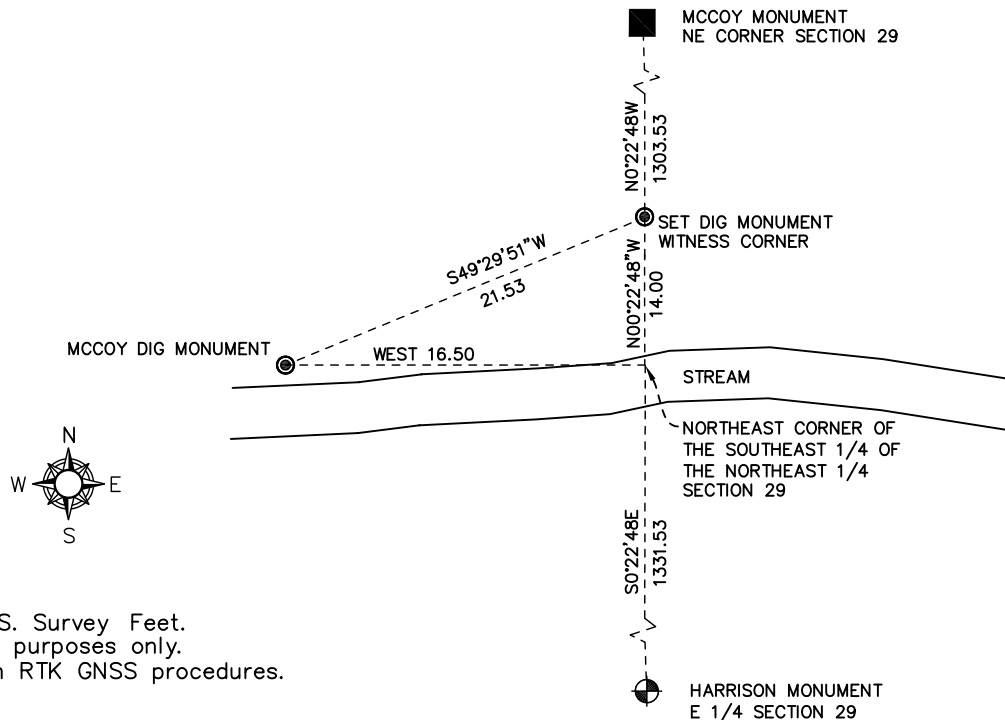
MONROE COUNTY
COORDINATE SYSTEM
NAD 1983 (2007)

TRUE CORNER LOCATION
Northing (Y) 404127.38
Easting (X) 673452.26

MCCOY DIG MONUMENT
WITNESS CORNER
Northing (Y) 404141.36
Easting (X) 673452.20

Base Station - 22 182W
Northing (Y) 408053.25
Easting (X) 679287.00

All distances are shown in U.S. Survey Feet.
Bearings are for tie reference purposes only.
Coordinates were derived from RTK GNSS procedures.



⊙ = LOCATION CORNER
Corner I.D. N 1/16 29

T 18 N R 2 W
Town of Greenfield
Monroe County, WI.