

JUNEAU COUNTY SURVEY MONUMENT RECORD

CORNER NO. 54
SECTION 18
TOWN 18 N.
RANGE 2 E.

TYPE OF MONUMENT: STANDARD HARRISON MONUMENT FOUND

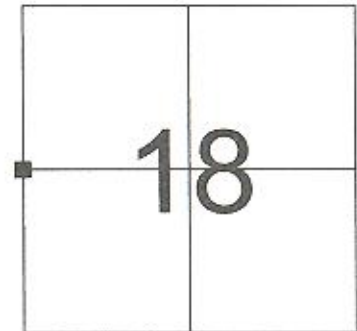
JUNEAU COUNTY COORDINATES NAD 83/91
NORTHING: 242,686.74
EASTING: 400,774.20

■ = CORNER MONUMENT RESTORED

BASIS FOR MONUMENT LOCATION
(USE REVERSE SIDE IF NECESSARY)

SHOW INFO SUCH AS: HISTORY OF CORNER, WITH REFERENCE TO VOLUME AND PAGE DATES, SURVEYOR; EXACT DESCRIPTION OF MONUMENT PLACED OR FOUND, IF LOCATION COMPUTED, BY TAPED OR EDM TRAVERSE; LANDOWNER REMARKS, ETC.

STANDARD HARRISON MONUMENT FOUND AS PER TIE SHEET
DATED 2/22/1983 BY WILLIAM JUNG.

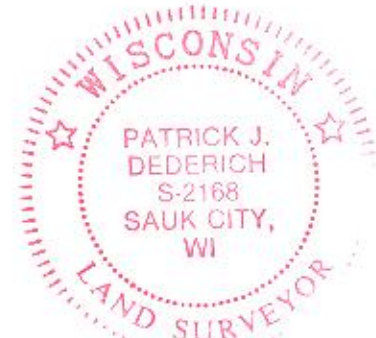
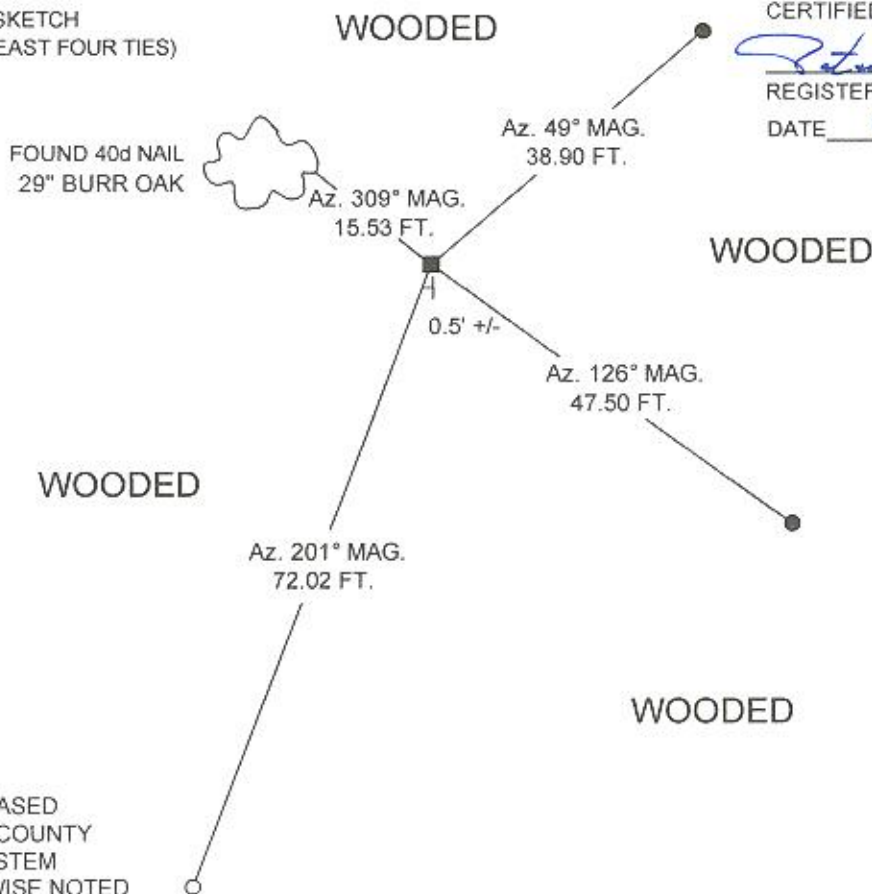


LOCATION

LEGEND

- = STANDARD HARRISON MONUMENT FOUND
- ∧ = GOVERNMENT SIGN SET
- = 3/4" X 24" IRON ROD SET
- = 3/4" DIAMETER IRON ROD FOUND

TIE SKETCH
(SHOW AT LEAST FOUR TIES)



CERTIFIED CORRECT

Patrick J. Dederich
REGISTERED LAND SURVEYOR

DATE 4/18/2010

NOT TO SCALE



AZIMUTHS ARE BASED
ON THE JUNEAU COUNTY
COORDINATE SYSTEM
UNLESS OTHERWISE NOTED

41801132000

I, William C. Jung, do hereby certify that on the 8th day of June 1982 I found ~~(no evidence)~~ of the East 1/4 corner of Section 13, T18 N, R 1 E Fourth Principal Meridian, and I re-established said corner according to the Wisconsin Statutes as shown and described hereon.

Dated this 22nd day of Feb. 1983.

William C. Jung
Deputy County Surveyor

Title

History of corner establishment since Original Government Survey

Years ago a surveyor from Juneau County was at this corner. According to Duane Marten's notes of 1973-1974 (while he was working around Shennington), he may have set an iron at this corner.

Description of corner evidence found:

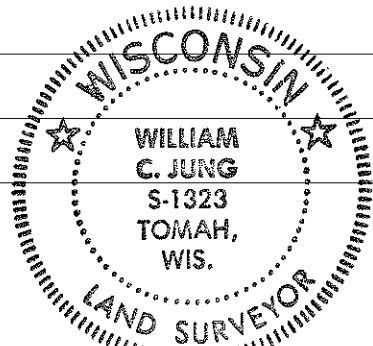
After surveying out Section 13, I set the corner at a location that best fits the existing monuments and occupation in Section 13. This corner also matches Marten's work done in 1973-1974. It also fits the Town/County Line. I measure N0°50'25"E, 2638.51' to the NE of Section 13 and S0°45'56"W, 2634.76' to the SE of Section 13. I could not find any existing monuments at this corner.

Description of corner and witness monuments, references and accessories used to perpetuate the original or re-established location of this corner:

Approved: **HARLEY A. SIME**
MONROE CO. SURVEYOR

Witnesses to corner location:

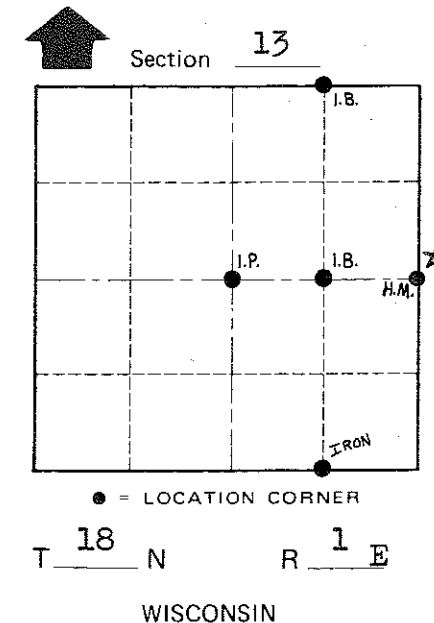
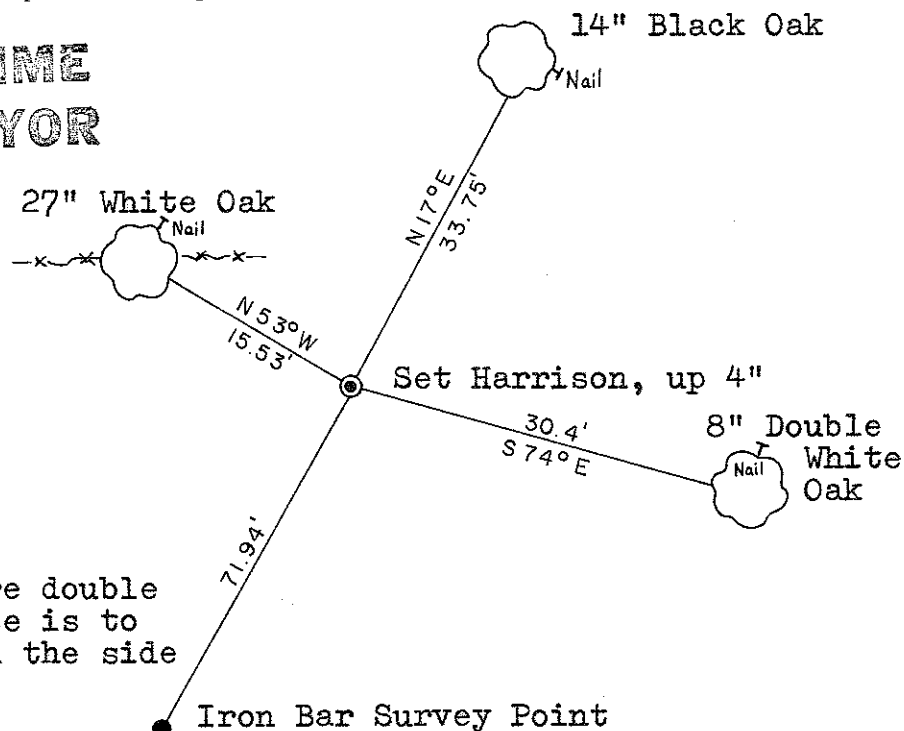
William Jung
Bryan Meyer



SURVEY CONTROL ORDER

Horizontal	_____
Vertical	_____

Note: All bearing trees are double blazed. Each distance is to a nail in a blaze on the side of the tree.



WISCONSIN COORDINATE SYSTEM

Corner	East (X)	North (Y)	Elevation (Z)	Zone
Control Sta. Name				

City, Village or Town Byron
County of Monroe

COUNTY SURVEYOR FORM NO. 1