

JUNEAU COUNTY SURVEY MONUMENT RECORD

CORNER NO. 34
SECTION 7
TOWN 18 N.
RANGE 2 E.

TYPE OF MONUMENT: 2-3/8" DIAMETER IRON PIPE FOUND

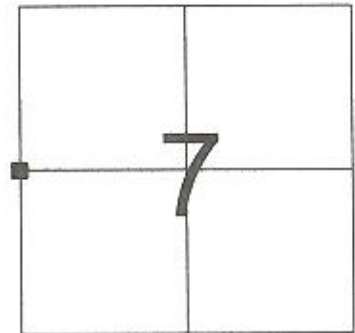
JUNEAU COUNTY COORDINATES NAD 83/91
NORTHING: 247,974.40
EASTING: 400,811.33

■ = CORNER MONUMENT RESTORED

BASIS FOR MONUMENT LOCATION
(USE REVERSE SIDE IF NECESSARY)

SHOW INFO SUCH AS: HISTORY OF CORNER, WITH REFERENCE TO VOLUME AND PAGE DATES, SURVEYOR; EXACT DESCRIPTION OF MONUMENT PLACED OR FOUND, IF LOCATION COMPUTED, BY TAPED OR EDM TRAVERSE; LANDOWNER REMARKS, ETC.

2-3/8" DIAMETER IRON PIPE FOUND AS PER TIE SHEET
DATED 5/4/1982, BY BILL JUNG, UPDATED 11/14/1997.



LOCATION

LEGEND

- = 2-3/8" DIAMETER IRON PIPE FOUND
- λ = GOVERNMENT SIGN SET
- = 3/4" X 24" IRON ROD SET

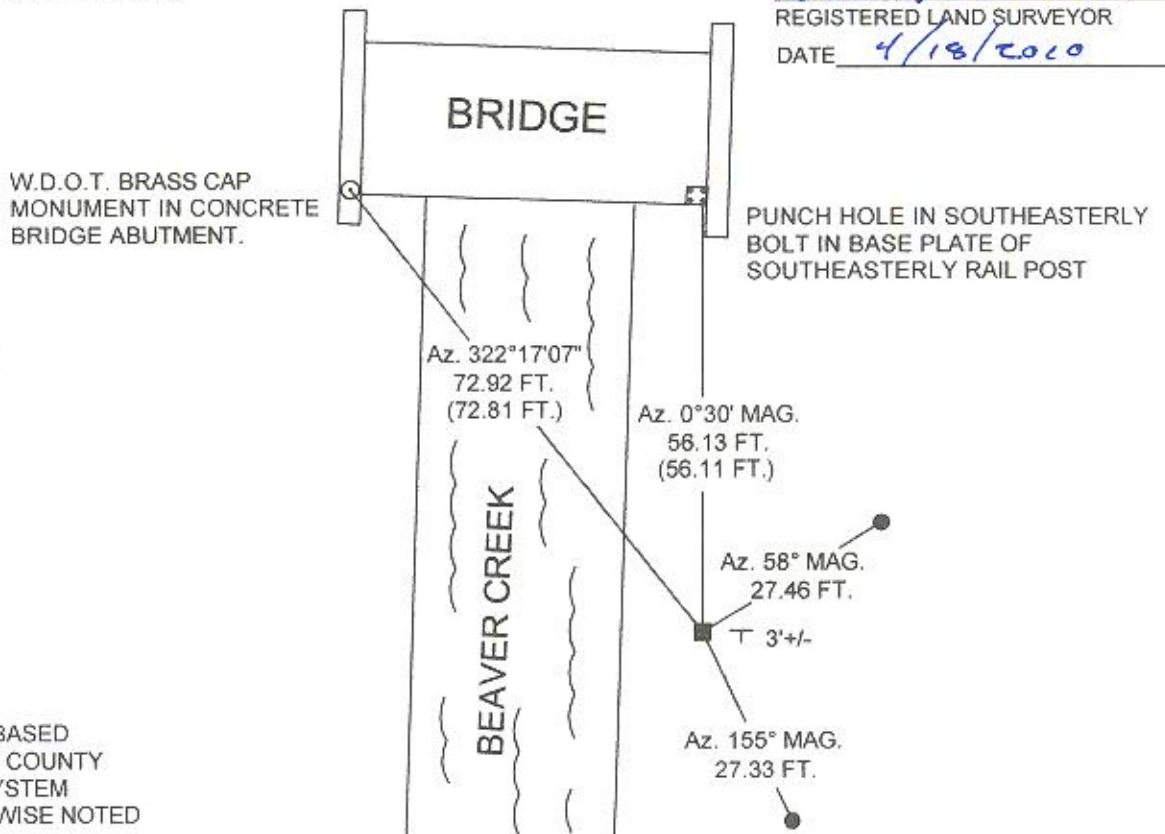


CERTIFIED CORRECT

Patrick J. Dederich
REGISTERED LAND SURVEYOR

DATE 4/18/2010

TIE SKETCH
(SHOW AT LEAST FOUR TIES)



NOT TO SCALE



AZIMUTHS ARE BASED
ON THE JUNEAU COUNTY
COORDINATE SYSTEM
UNLESS OTHERWISE NOTED

JUNEAU COUNTY

Survey Monument Record

TYPE OF MONUMENT: 2" PIPE 12" TALL

STATE PLANE COORDINATES: N _____
F _____

ELEVATION — M.S.L. DATUM: _____

THETA ANGLE: _____

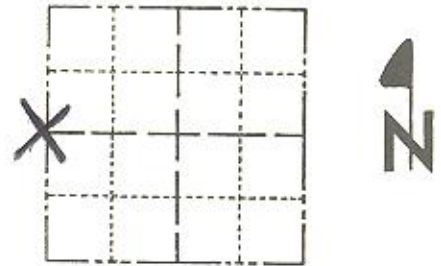
FIELD BOOK: _____ PAGE _____

CORNER NO. 34

SECTION 7

TOWN 18

RANGE 2E



LOCATION
(Indicated by 'X')

SEAL:



BASIS FOR MONUMENT LOCATION

(Use reverse side if necessary)

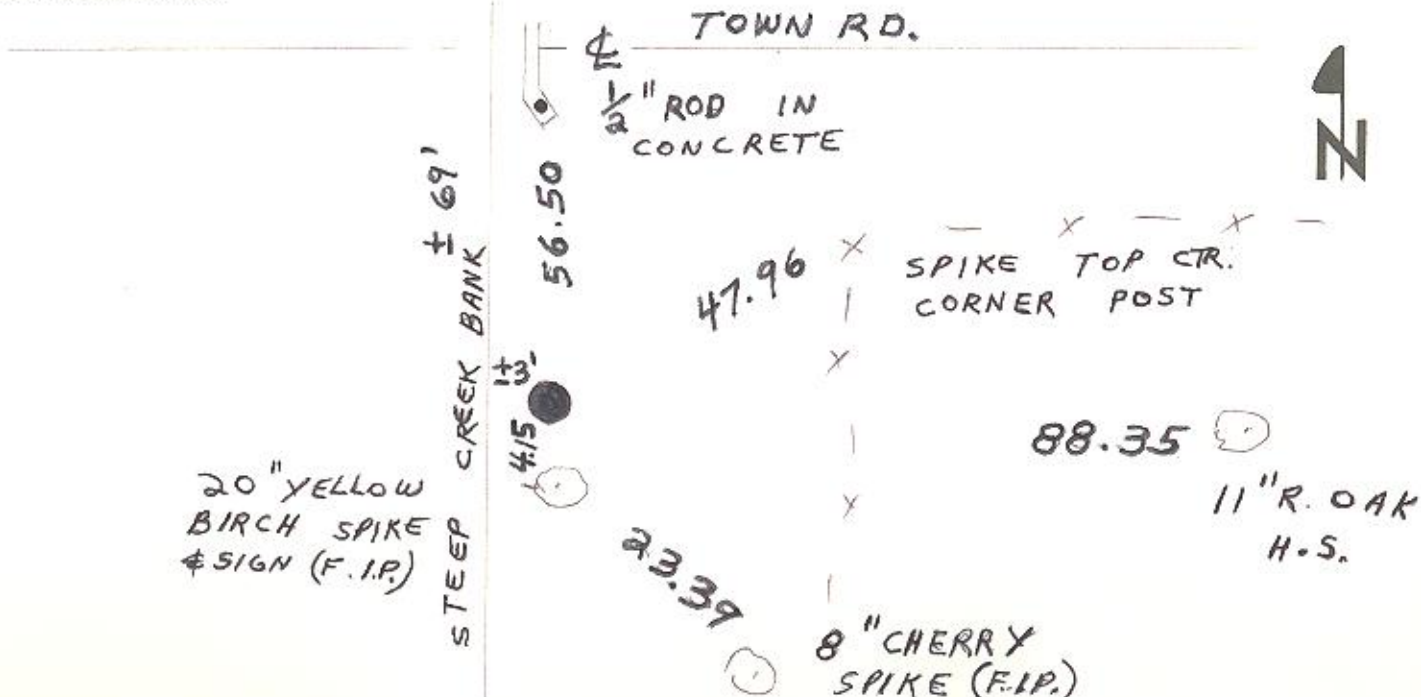
Show info such as: History of corner, with reference to Vol. and pg. dates, surveyor; exact description of monument replaced; if location computed, by taped or EDM traverse; landowner remarks, etc.

Monroe County marker found in place. Accepted as the true corner location

CERTIFIED CORRECT:
James J. Carhole
Registered Land Surveyor
DATE: Feb. 15, 1988

TIE SKETCH

(Show at least four ties)



I, William C. Jung, do hereby certify that on the fourth day of May 19 82, I found evidence of the East corner of Section 12, T 18 N, R 1 E Fourth Principal Meridian, and I re-established said corner according to the Wisconsin Statutes as shown and described hereon.

Dated this seventh day of May 19 82.

William C. Jung
Deputy County Surveyor
Title

History of corner establishment since Original Government Survey

41801122000

Zietlow's map, dated September, 1970, shows that he set an iron bar at this corner. Marten's maps, dated April, 1972, and September, 1974, also show an iron at this corner, as does Harley Sime's map, dated June, 1980.

Description of corner evidence found:

I found Zietlow's iron bar at the corner. I remonumented this corner with a 2 3/8"x74" iron pipe on the East edge of Beaver Creek.

UPDATE: Found the monument of record in good condition. Established ties as illustrated below.

Douglas J. Malliet, R.L.S. #1266 14 November 1997

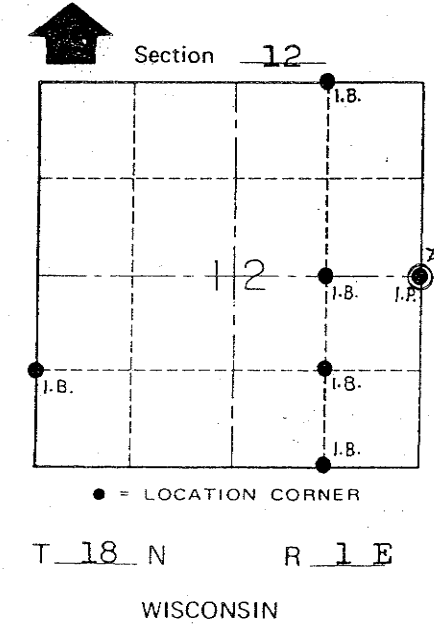
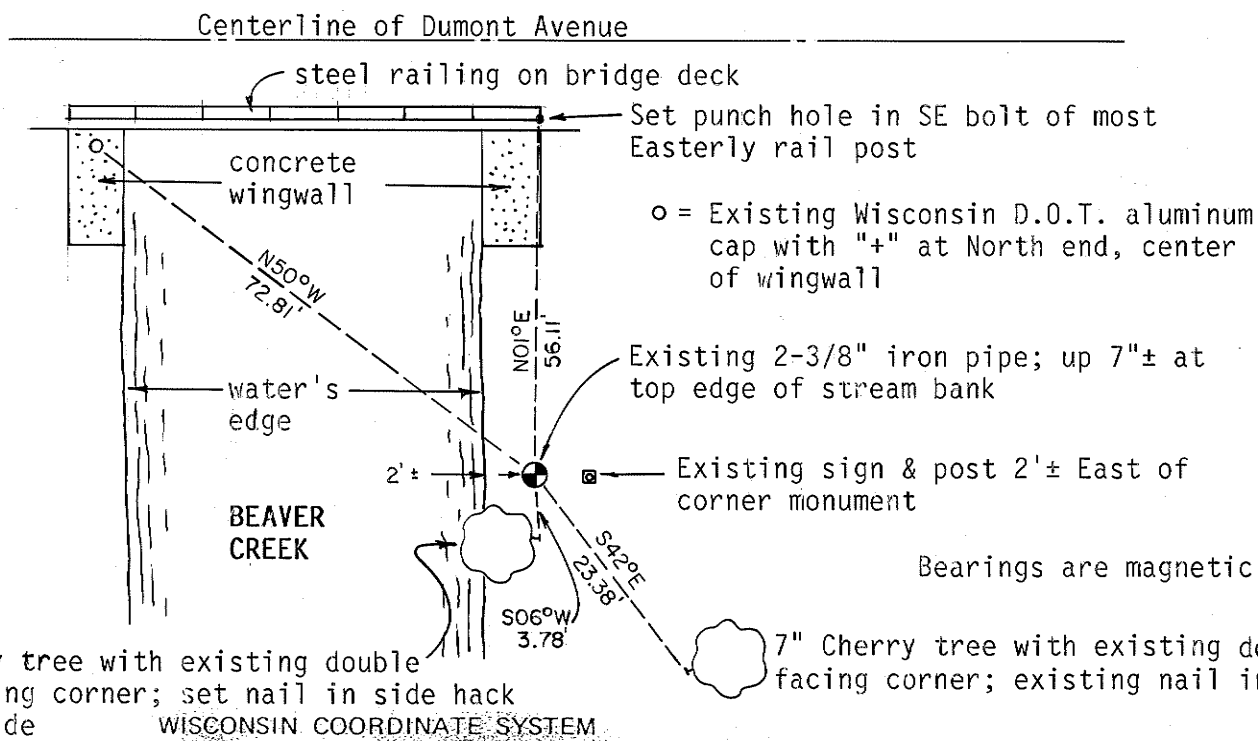
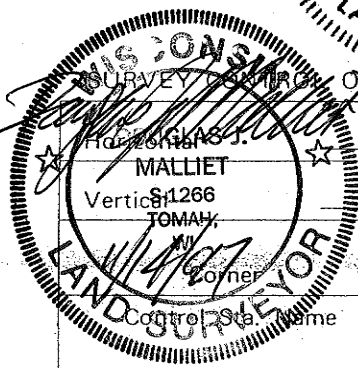
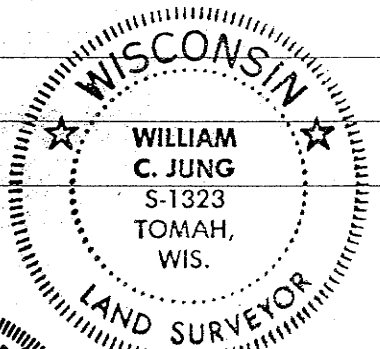
CREW: Douglas J. Malliet, Bryan H. Meyer 14 November 1997

Approved: **HARLEY A. SIME**
MONROE CO. SURVEYOR

Description of corner and witness monuments, references and accessories used to perpetuate the original or re-established location of this corner:

Witnesses to corner location:

William Jung
Bryan Meyer



East (X)	North (Y)	Elevation (Z)	Zone

City, Village or Town of Byron
County of Monroe

COUNTY SURVEYOR FORM NO. 1

I, William C. Jung, do hereby certify that on the fourth day of May 19 82, I found evidence of the East 1/4 corner of Section 12, T 18 N, R 1 E Fourth Principal Meridian, and I re-established said corner according to the Wisconsin Statutes as shown and described hereon.

History of corner establishment since Original Government Survey

Zietlow's map, dated September, 1970, shows that he set an iron bar at this corner. Marten's maps, dated April, 1972, and September, 1974, also show an iron at this corner, as does Harley Sime's map, dated June, 1980.

Description of corner evidence found:

I found Zietlow's iron bar at the corner. I remonumented this corner with a 2 3/8"x74" iron pipe on the East edge of Beaver Creek.

Dated this seventh day of May 19 82.
William C. Jung
 Deputy County Surveyor

Title

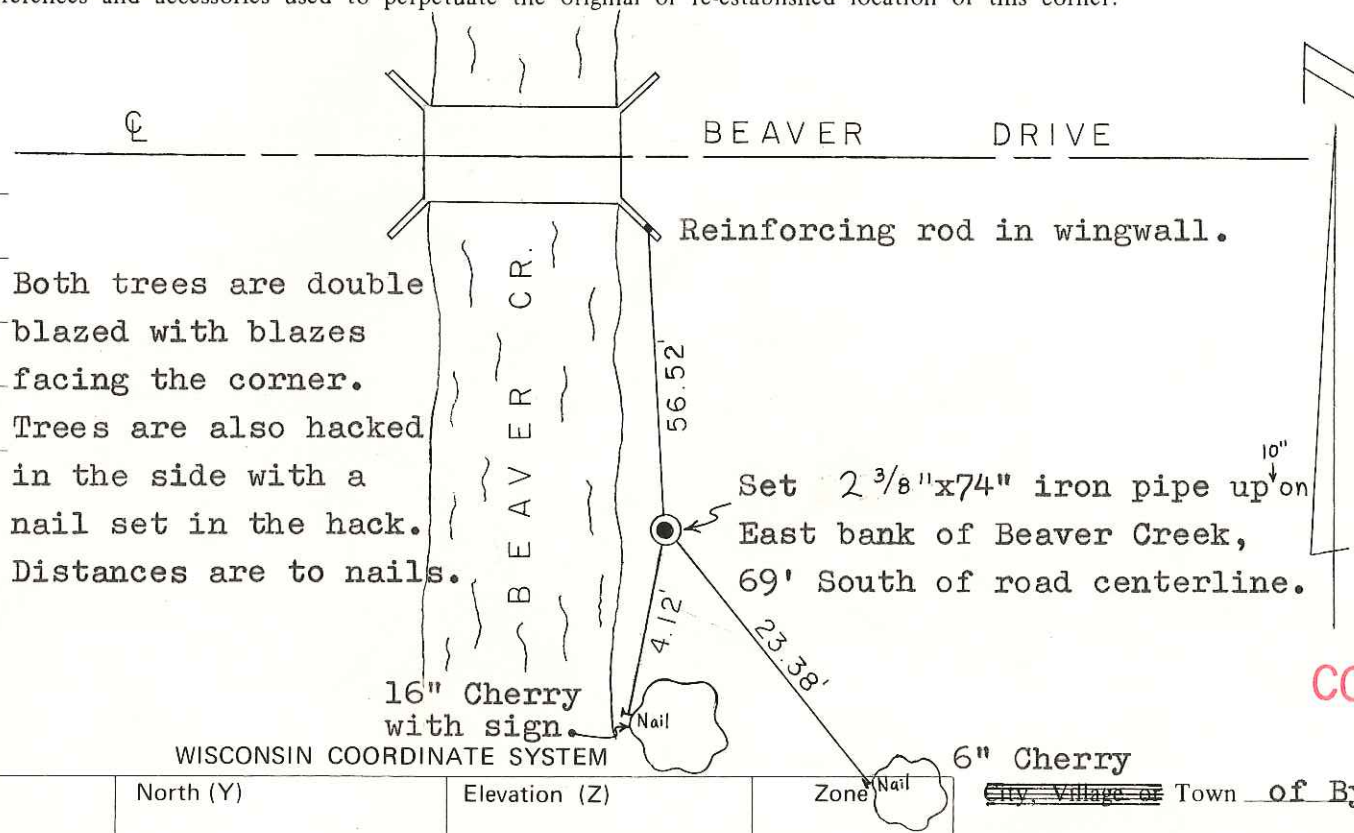
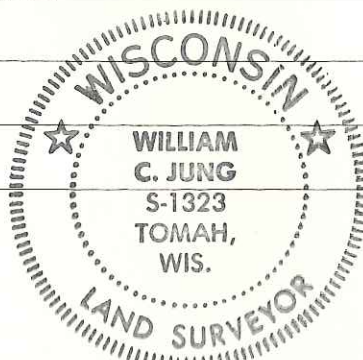
Approved: **HARLEY A. SIME**
MONROE CO. SURVEYOR

Description of corner and witness monuments, references and accessories used to perpetuate the original or re-established location of this corner:

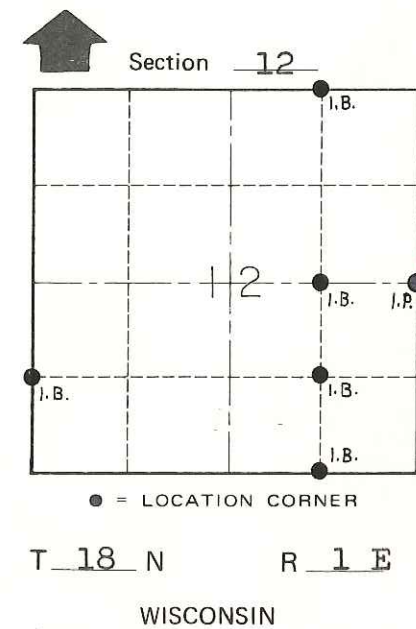
Witnesses to corner location:

William Jung

Bryan Meyer



Both trees are double blazed with blazes facing the corner. Trees are also hacked in the side with a nail set in the hack. Distances are to nails.



PLACED
 COUNTY SURVEYOR'S
 SIGN

SURVEY CONTROL ORDER

Horizontal	_____
Vertical	_____

Corner	East (X)	North (Y)	Elevation (Z)	Zone
Control Sta. Name				

City, Village or Town of Byron
 County of Monroe

COUNTY SURVEYOR FORM NO. 1