

JUNEAU COUNTY SURVEY MONUMENT RECORD

CORNER NO. 41
SECTION 7
TOWN 18 N.
RANGE 2 E.

TYPE OF MONUMENT: STANDARD HARRISON MONUMENT FOUND

JUNEAU COUNTY COORDINATES NAD 83/91
NORTHING: 245,325.28
EASTING: 400,793.20

■ = CORNER MONUMENT RESTORED

BASIS FOR MONUMENT LOCATION
(USE REVERSE SIDE IF NECESSARY)

SHOW INFO SUCH AS: HISTORY OF CORNER, WITH REFERENCE TO VOLUME AND PAGE DATES, SURVEYOR; EXACT DESCRIPTION OF MONUMENT PLACED OR FOUND, IF LOCATION COMPUTED, BY TAPED OR EDM TRAVERSE; LANDOWNER REMARKS, ETC.

STANDARD HARRISON MONUMENT FOUND AS PER TIE SHEET
DATED 5/7/1982, BY BILL JUNG. TOP IS BROKEN OFF.

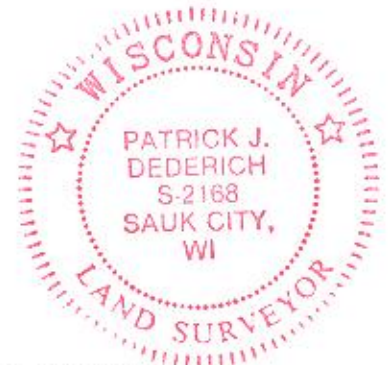


LOCATION

LEGEND

- STANDARD HARRISON MONUMENT FOUND
- λ = GOVERNMENT SIGN SET
- = 3/4" X 24" IRON ROD SET

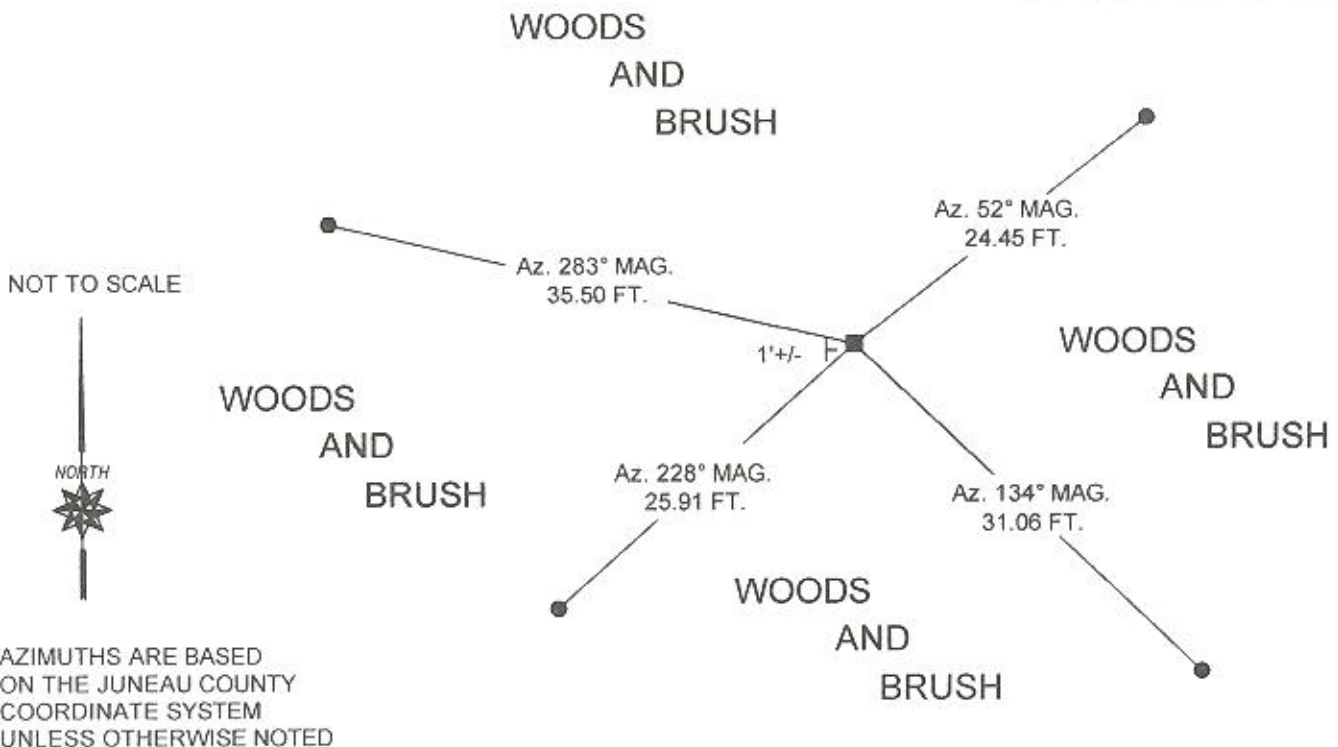
TIE SKETCH
(SHOW AT LEAST FOUR TIES)



CERTIFIED CORRECT

Patrick J. Dederich
REGISTERED LAND SURVEYOR

DATE 4/14/2010



CERTIFICATE

I, William C. Jung, do hereby certify that on the fourth day of May 1982, I found ~~evidence~~ (no evidence) of the Southeast corner of Section 12, T 18 N, R 1 E Fourth Principal Meridian, and I re-established said corner according to the Wisconsin Statutes as shown and described hereon.

Dated this seventh day of May 1982.

William C. Jung
Deputy County Surveyor
Title

CERTIFIED LAND CORNER

No. 41

41801120000

History of corner establishment since Original Government Survey

In September of 1970, Fred Zietlow surveyed out Section 12 and computed the location of this corner.

Description of corner evidence found:

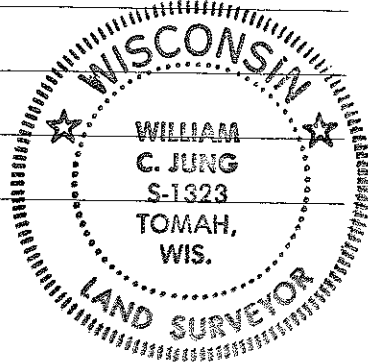
After retracing Zietlow's survey and checking the existing field evidence and monuments in Section 12, I set the corner at Zietlow's computed location. It fits the Town Line and the evidence in Sections 12 and 13 very well.

Approved: **HARLEY A. SIME**
MONROE CO. SURVEYOR

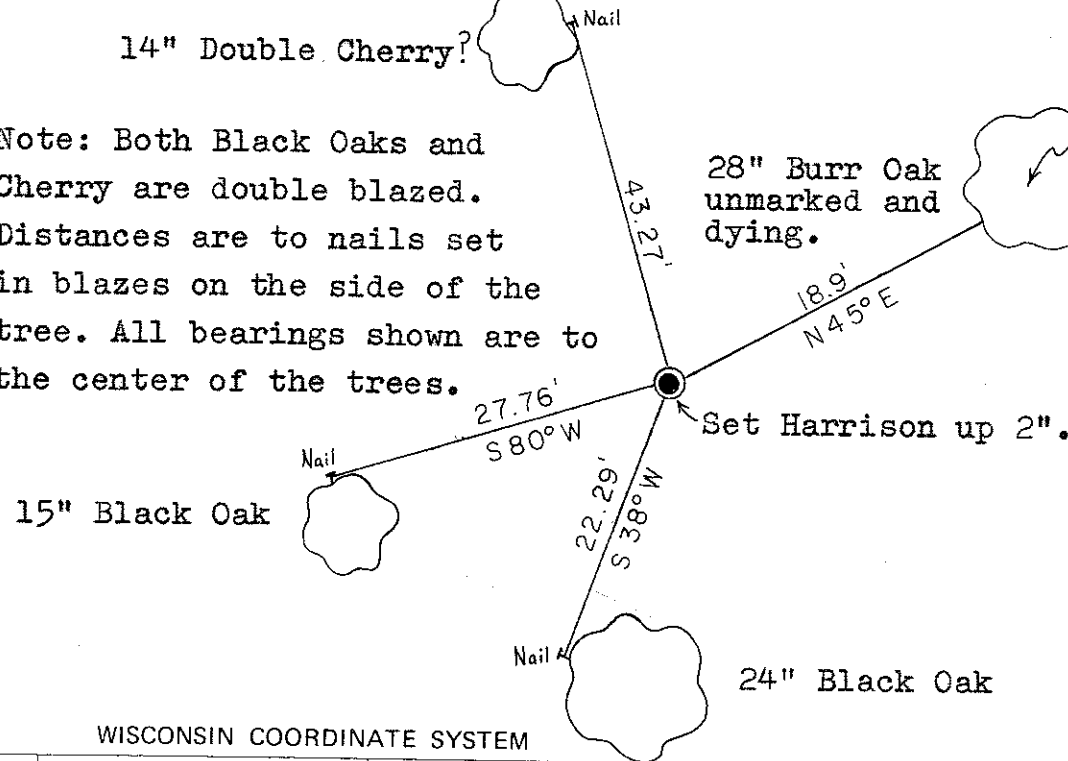
Description of corner and witness monuments, references and accessories used to perpetuate the original or re-established location of this corner:

Witnesses to corner location:

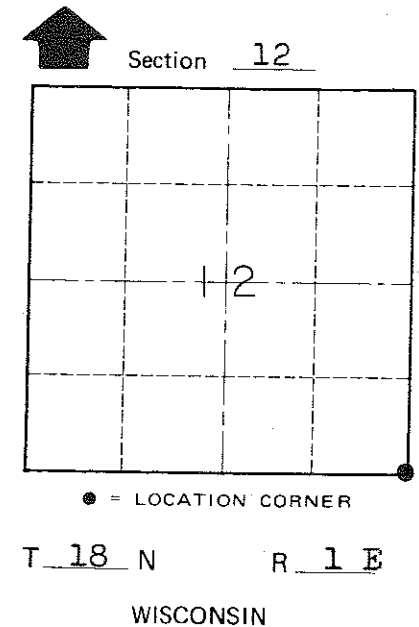
Bill Jung
Bryan Meyer



Note: Both Black Oaks and Cherry are double blazed. Distances are to nails set in blazes on the side of the tree. All bearings shown are to the center of the trees.



DISTANCE TO TREE CENTER



SURVEY CONTROL ORDER

Horizontal	_____
Vertical	_____

WISCONSIN COORDINATE SYSTEM

Corner	East (X)	North (Y)	Elevation (Z)	Zone
Control Sta. Name				

~~City Village or~~ Town of Byron

County of Monroe

COUNTY SURVEYOR FORM NO. 1