

41801110020

I, Gary L. Dechant, do hereby certify that on the 1st day of April 19 88, I found (no evidence) of the S 1/4 corner of Section 11, T18 N, R1 E Fourth Principal Meridian, and I re-established said corner according to the Wisconsin Statutes as shown and described hereon.

Dated this 5th day of April 19 88.

Gary L. Dechant

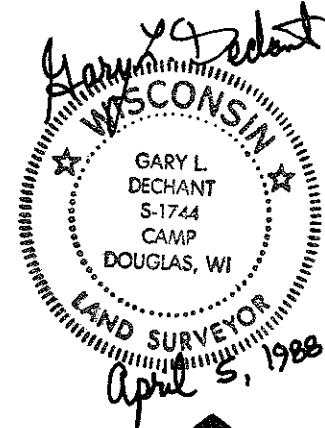
Reg. Land Surveyor, S-1744 Title

History of corner establishment since Original Government Survey

No known recorded history since the original government survey.

Description of corner evidence found:

Set by single proportionate measurement.

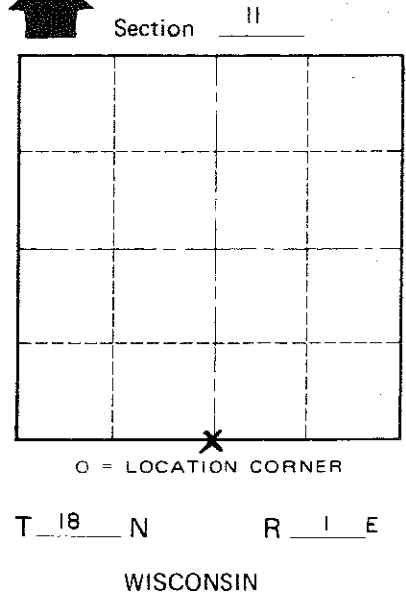
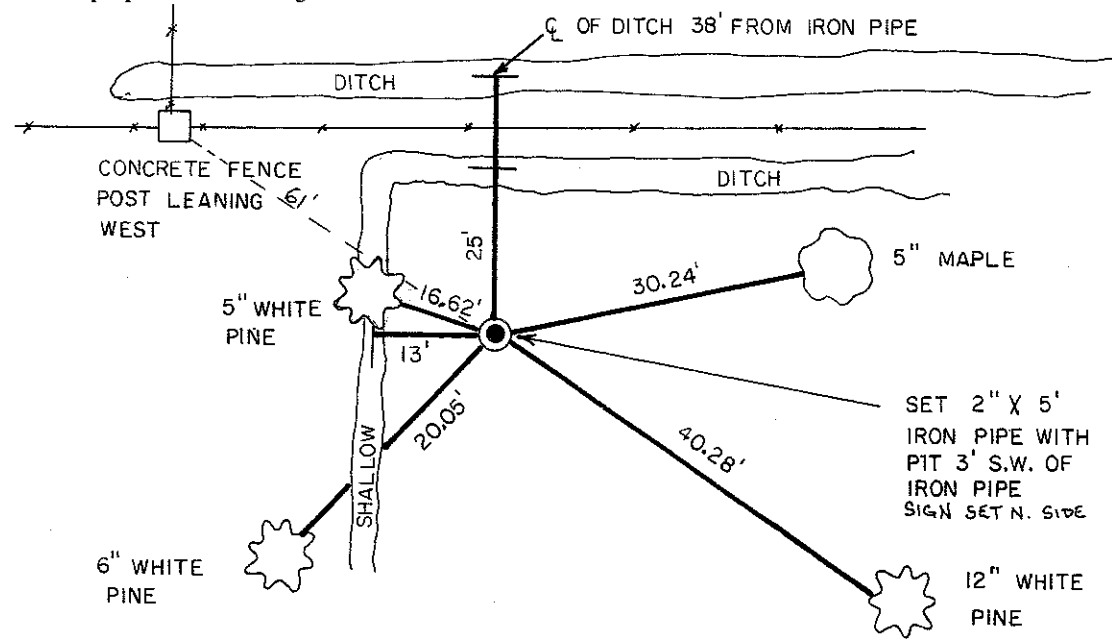


Description of corner and witness monuments, references and accessories used to perpetuate the original or re-established location of this corner:

Witnesses to corner location:

David E. Madison

Gary L. Dechant



COUNTY SURVEYOR FORM NO. 1

SURVEY CONTROL ORDER

Table with 2 rows: Horizontal, Vertical.

WISCONSIN COORDINATE SYSTEM

Table with 5 columns: Corner, East (X), North (Y), Elevation (Z), Zone.

Byron Town, Monroe County, Wisconsin