

# 38

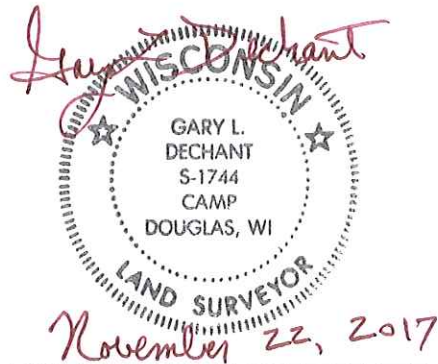
**U.S. PUBLIC LAND CORNER  
MAINTENANCE**

**Corner ID : E1/4 Sec.10, T18N-R1E  
41801102000**

<u>DATE</u>	<u>CREW</u>	<u>MONUMENT TYPE -----</u>
October 12, 2017	Zachariah P.Dechant Gary L. Dechant	Existing Harrison, top broke off, down 6", 2.5' west of center line Dragonfly Road. 24' south of south entrance of driveway fire No. 8506 Dragonfly Road.

<u>References:</u>	<u>Bearing</u>	<u>Distance</u>
1) Set 3/4"x24" round iron bar, down 6" in lawn, 13' south of driveway	N67E	43.56'
2) Set 3/4"x24" round iron bar, down 10" in field	S66E	57.74"
3) Set 3/4"x24" round iron bar, down 6", 4' NE of 14" Jack Pine	S67W	41.95'
4) Set 3/4"x24" round iron bar, down 6", 21' SE of 6" Jack Pine	N66W	44.28'

**Harrison and reference markers set on straight line.**



I, William C. Jung, do hereby certify that on the 8th day of September 19 82, I found (evidence) of the East 1/4 corner of Section 10, T 18 N, R 1 E Fourth Principal Meridian, and I re-established said corner according to the Wisconsin Statutes as shown and described hereon.

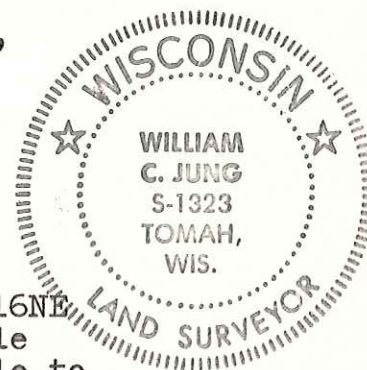
Dated this 18th day of Jan. 19 83.

William C. Jung  
Deputy County Surveyor  
Title

History of corner establishment since Original Government Survey

In the Town Board notes of July 5 and 6, 1900, the records show that according to a road survey performed by Chas Crawford, this corner falls in the road centerline and that the distance North to the section corner was 2640'. In August of 1969, Duane Description of corner evidence found: Marten set an iron bar at this corner. He also found a fence further West that fit his corner location.

I accepted the occupied corner as the best available evidence of the original corner and Crawford's corner. The East-West fences at the E1/16NE corner split the 1/2 mile perfectly if this corner is used. The 1/2 mile to the North measures 2640.93' and Crawford calls for 2640'. The 1/2 mile to the South measures 2642.12', so this location fits the North-South distances very well. However, it is not on line, but is about 35' West of the true computed corner. I reviewed this



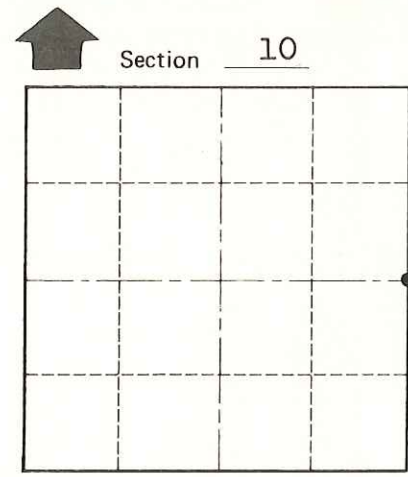
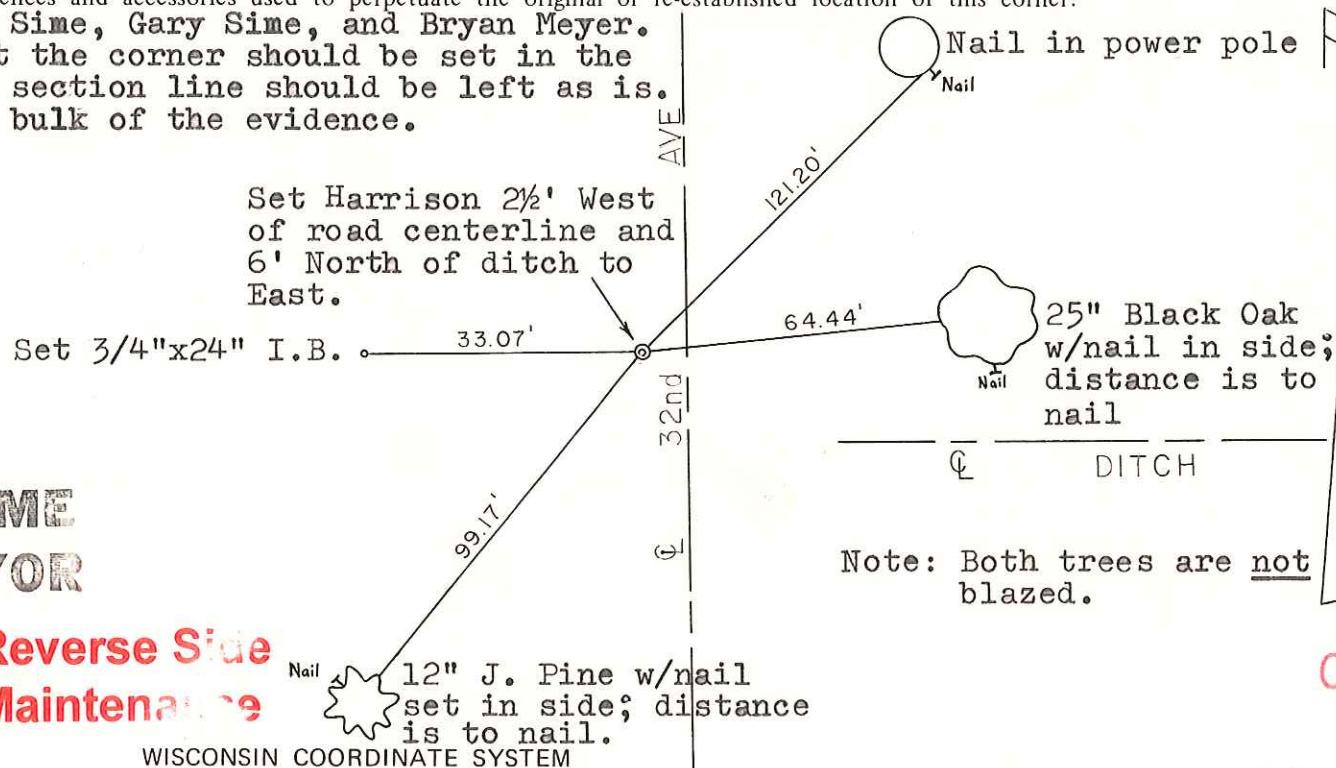
Description of corner and witness monuments, references and accessories used to perpetuate the original or re-established location of this corner:

(continued) corner with Harley Sime, Gary Sime, and Bryan Meyer. The four of us all agreed that the corner should be set in the road and that the bend in the section line should be left as is. Witnesses to corner location: This fits the bulk of the evidence.

William C. Jung

Bryan H. Meyer

John Fox



Note: Both trees are not blazed.

Approved: HARLEY A. SIME  
MONROE CO. SURVEYOR

SURVEY CONTROL ORDER

Horizontal	_____
Vertical	_____

See Reverse Side For Maintenance

WISCONSIN COORDINATE SYSTEM

Corner	East (X)	North (Y)	Elevation (Z)	Zone
Control Sta. Name				

PLACED COUNTY SURVEYOR'S SIGN 6-12-87

~~City, Village or~~ Town of Byron

County of Monroe

COUNTY SURVEYOR FORM NO. 1