

45

**U.S. PUBLIC LAND CORNER
MAINTENANCE**

Corner ID : SE Sec. 10, T18N-R1E

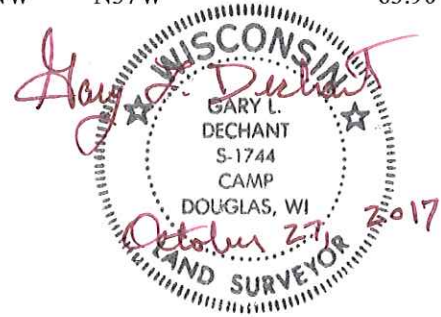
41801100000

<u>FIELD DATE</u>	<u>CREW</u>	<u>MONUMENT TYPE -----</u>
September 20, 2017	Zachariah P. Dechant Gary L. Dechant	Existing Harrison intact, down 10", center line of Dragonfly Road 102' south of driveway 8938 Dragonfly

References:

	<u>Bearing</u>	<u>Distance</u>
1) Set 3/4"x24" round iron bar, down 6", 5' west of 24" Red Pine	N71E	29.38'
2) Set 3/4" x 24" round iron bar in field, down 12"	S37E	55.79
3) Set 3/4"x24" round iron bar, down 8"	S71W	52.24'
4) Set 3/4"x24" round iron bar, down 6", in lawn, in line with shrub to NW	N37W	63.90'

Harrison and reference markers set on straight lines.



I, Harley A. Sime, do hereby certify that on the Fourth day of June 1980, I found (evidence) (~~removed~~) of the North west corner of Section 14, T18 N, R1E Fourth Principal Meridian, and I re-established said corner according to the Wisconsin Statutes as shown and described hereon.

Dated this 25th day of Feb. 1981.

Harley A. Sime - R.L.S. 355

County Surveyor-Monroe County, Wisconsin.
Title

History of corner establishment since Original Government Survey

Schroeder (?) was at this corner in December of 1889. Harley Sime set an iron pipe at the occupied corner in 1960. He again used this corner in 1961. Duane Marten used this iron pipe in his August, 1969 survey.

Description of corner evidence found:

Found an iron monument used in previous survey work, removed it and replaced it with a Harrison.

See Reverse Side For Maintenance

Description of corner and witness monuments, references and accessories used to perpetuate the original or re-established location of this corner:

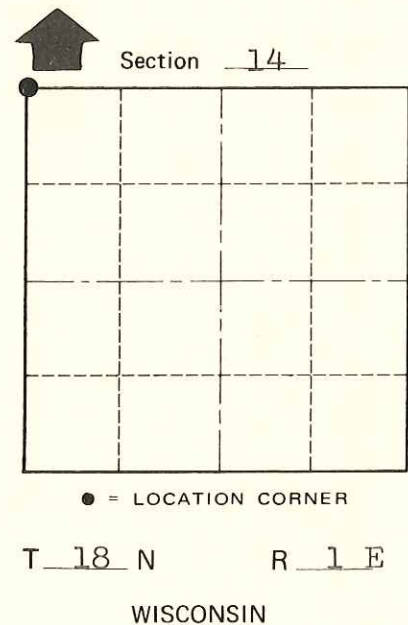
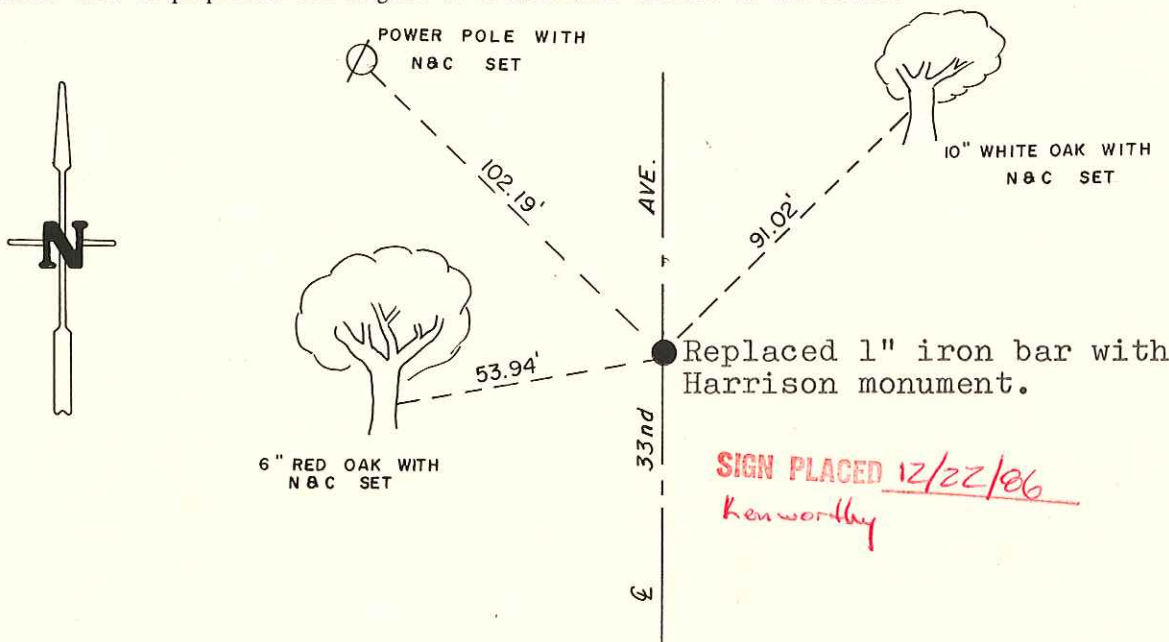
Witnesses to corner location:

Scott Sowers

Todd Tormoen

Charles Dade

**Approved: HARLEY A. SIME
MONROE CO. SURVEYOR**



COUNTY SURVEYOR FORM NO. 1

SURVEY CONTROL ORDER

Horizontal	_____
Vertical	_____

WISCONSIN COORDINATE SYSTEM

Corner	East (X)	North (Y)	Elevation (Z)	Zone
Control Sta. Name				

~~City, Village or~~ Town of Byron
County of Monroe
Wisconsin