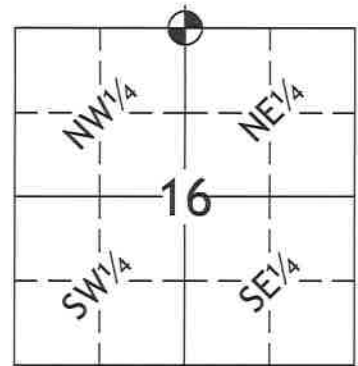


# U.S. Public Land Survey Monument Record Monroe County, Wisconsin

IN ACCORDANCE WITH WISCONSIN ADMINISTRATIVE CODE,  
CHAPTER A-E 7.08 (3) (A)-(I)



CORNER NUMBER 1000



Section 16, T.18N., R.01E.  
Monroe County, Wisconsin.

## Location

(A) THE IDENTITY OF THE CORNER, AS REFERENCED TO THE U.S. PUBLIC LAND SURVEY SYSTEM.

Section 16 Township 18 North Range 01 East

Town of BYRON

Type of Corner NORTH 1/4

Type of Monument 4" O.D. CAST IRON MONUMENT FOUND

Wisconsin County Coordinate System - Monroe County Grid (NAD 83/91)

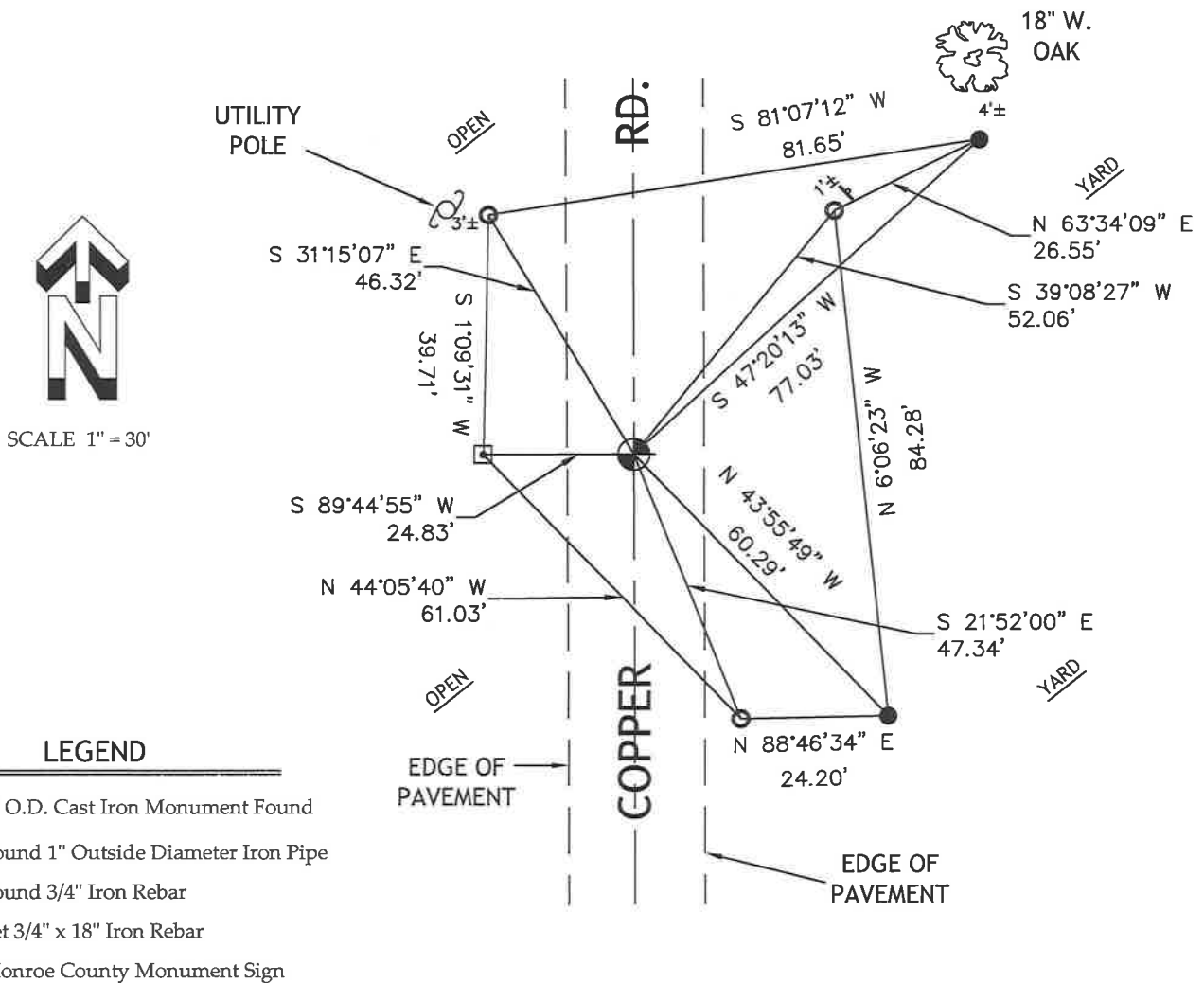
Wisconsin County Coordinate System - Monroe County Grid (NAD 83/91)

N: 415,635.0210

E: 739,063.3930

## Plan View

(C) REFERENCE TO AT LEAST 4 WITNESS MONUMENTS. WITNESS MONUMENTS SHALL BE CONCRETE, NATURAL STONE, IRON, BEARING TREES OR OTHER EQUALLY DURABLE MATERIAL, EXCEPT WOOD OTHER THAN BEARING TREES; (D) A PLAN VIEW DRAWING DEPICTING THE RELEVANT MONUMENTS AND REFERENCE TIES WHICH IS SUFFICIENT IN DETAIL TO ENABLE ACCURATE RELOCATION OF THE CORNER MONUMENT IF THE CORNER MONUMENT IS DISTURBED; (E) A DESCRIPTION OF ANY MATERIAL DISCREPANCY BETWEEN THE LOCATION OF THE CORNER AS RESTORED OR REESTABLISHED AND THE LOCATION OF THAT CORNER AS PREVIOUSLY RESTORED OR RE-ESTABLISHED;



## Surveyor's Certificate

CHAPTER 7.08 (3)(I)

I, Jason R. Hiess, hereby certify that the U.S. Public Land Survey monument record shown was determined by me or under my direction and is correct and complete to the best of my knowledge and belief.

*Jason R. Hiess*

Jason R. Hiess, PLS  
4905 West Park Avenue  
Chippewa Falls, WI 54729  
(715) 720-4000

Date 09-09-19



# Recovery Procedures

(B) A DESCRIPTION OF ANY RECORD EVIDENCE, MONUMENT EVIDENCE, OCCUPATIONAL EVIDENCE, TESTIMONIAL EVIDENCE OR ANY OTHER MATERIAL EVIDENCE CONSIDERED BY THE SURVEYOR, AND WHETHER THE MONUMENT WAS FOUND OR PLACED; (F) WHETHER THE CORNER WAS RESTORED THROUGH ACCEPTANCE OF AN OBLITERATED EVIDENCE LOCATION OR A FOUND PERPETUATED LOCATION; (G) WHETHER THE CORNER WAS REESTABLISHED THROUGH LOST-CORNER-PROPORTIONATE METHODS; (H) THE DIRECTIONS AND DISTANCES TO OTHER PUBLIC LAND SURVEY CORNERS WHICH WERE USED AS EVIDENCE OR USED FOR PROPORTIONING IN DETERMINING THE CORNER LOCATION;

Gary L. Dechant; July, 2016:

Existing Harrison intact, center line Copper Road 29' north driveway fire no. 8995 Copper Rd., down 5".

Jason R. Hiess; July, 2019:

I found a 4" O.D. cast iron monument at this location and accepted it as the N 1/4 corner of Section 16. I found 3 existing iron ties and set 3 new ties as shown.

#  
48

# U.S. PUBLIC LAND CORNER MAINTENANCE

Corner ID : S1/4 Sec. 9, T18N-R1E  
41801090020

DATE	CREW	MONUMENT TYPE
July 6, 2016	Zachariah P. Dechant Gary L. Dechant	Existing Harrison intact, center line Copper Road 29' north driveway fire no. 8995 Copper Rd, down 5".

References:	Bearing	Distance
1) Set 3/4"x24" round iron bar, down 6", 4' south of 18" White Oak in lawn	N46E	77.17'
2) Set 3/4"x24" round iron bar, down 6",	S45E	60.31'
3) Set 3/4"x24" round iron bar, down 6", center driveway 8995 Copper Rd	S46W	59.32'
4) Set 3/4"x24" round iron bar, down 6", south side of ditch of cranberry beds 14' west of concrete culvert in ditch	N45W	123.52'

Harrison and reference monuments set on straight lines.



I, Harley A. Sime, do hereby certify that on the 3rd day of October 1973, I found ~~(evidence)~~ (no evidence) of the S 1/4 corner of Section 9, T 18 N, R 1 E, Fourth Principal Meridian, and I re-established said corner according to the Wisconsin Statutes as shown and described hereon.

History of original corner establishment:

Description of corner evidence found:

See Reverse Side For Maintenance

Dated this 6th day of Feb. 1978.

Traversed Section 9 and set corner. There is also a 3/4" iron bar 78.67 feet North of the corner.

County Surveyor

Approved: HARLEY A. SIME  
MONROE CO. SURVEYOR

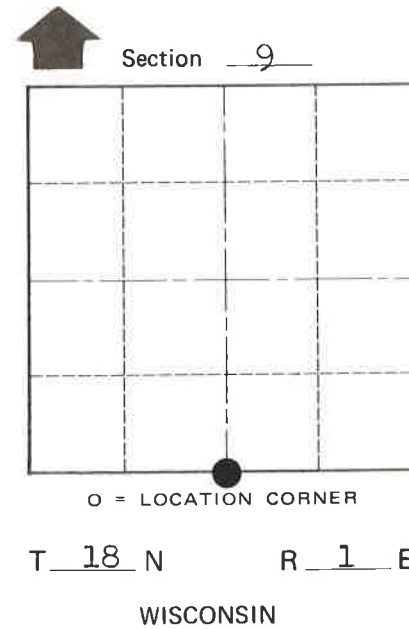
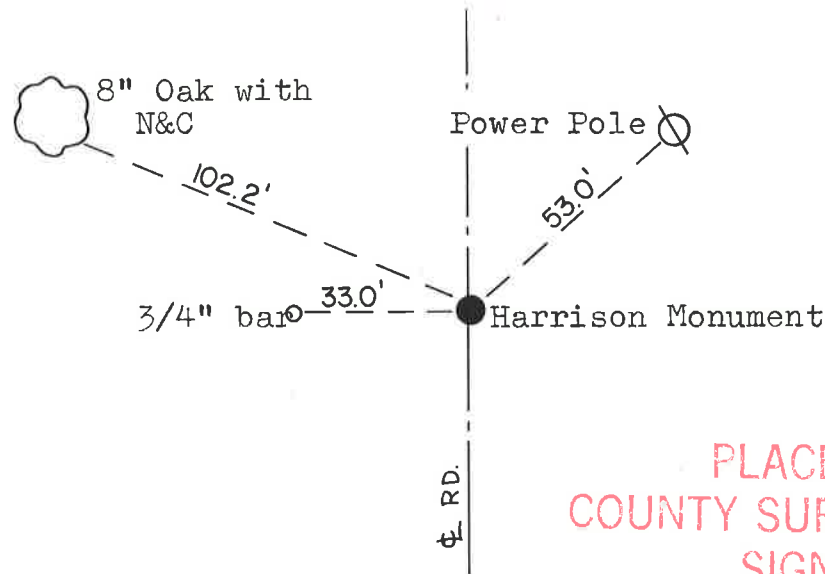
COUNTY SURVEYOR FORM NO. 1

Description of corner and witness monuments, references and accessories used to perpetuate the original or re-established location of this corner:

Set a Harrison marker.

Witnesses to corner location:

D. Marten



PLACED COUNTY SURVEYOR'S SIGN 6-19-87

SURVEY CONTROL ORDER

Horizontal	_____
Vertical	_____

WISCONSIN COORDINATE SYSTEM

Corner	East (X)	North (Y)	Elevation (Z)	Zone
Control Sta. Name				

City, Village or Town Byron

County of Monroe