

I, William C. Jung, do hereby certify that on the seventh day of June 1982, I found (no evidence) ~~of the~~ of the East 1/4 corner of Section 7, T 18 N, R 1 E Fourth Principal Meridian, and I re-established said corner according to the Wisconsin Statutes as shown and described hereon.

Dated this 16th day of June 1982.

William C. Jung - R. L. S. 1323

County Surveyors Office

Approved: **HARLEY A. SIME**
MONROE CO. SURVEYOR

COUNTY SURVEYOR FORM NO. 2

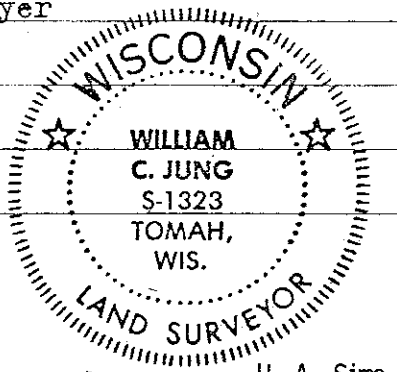
Description of corner and witness monuments, references and accessories used to perpetuate the original or re-established location of this corner:

William C. Jung

Witnesses to corner location:

William C. Jung

Bryan Meyer



H. A. Sime and Associates
P. O. Box 705
Tomah, Wisconsin 54660
Phone: (608)-372-5392

History of corner establishment since Original Government Survey
Henry Schroeder was here in September of 1895 and set a 1" square bar, 2' long.
Ray Hurlburt was here in October of 1940, and found a drift bolt and the point of a decayed wood stake. He then set a 1/2"x36" iron bar on the North side of the bolt.
This corner was apparently destroyed when a new bridge was erected in 1956. In an October, 1969 survey, Fred Zietlow shows a 3/4" iron bar at this corner in the centerline of highway 173, 4' North of a bridge, 2659.14' North of the Section corner to the South.

UPDATE: This corner and two of the previous three ties were destroyed when the bridge just south of the corner was replaced in 1990.

Measured between the Southeast Section corner and the E1/16SE corner. Reset this corner on line with these corners and at the same distance North of the E1/16SE corner. I could not find Zietlow's point.

UPDATE: Reset this corner using previous survey data and got ties as shown below.

1990 Crew: Meyer, Kenworthy
October 31, 1990
Clear, 65°±

(Guard sign next to pipe)

Existing 2" iron pipe near R/W post

Existing brass cap in concrete wingwall (DOT Vertical Control)

"173"

Set 1 1/2"x30" round iron bar

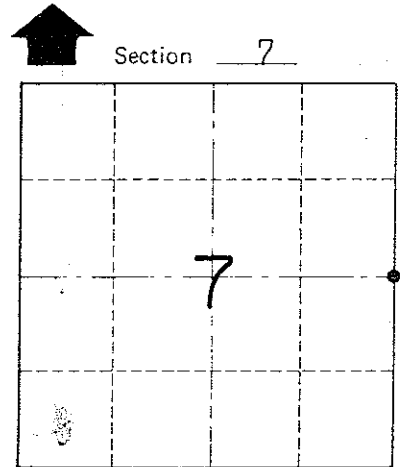
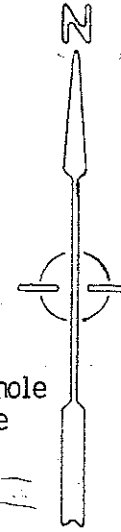
17.18

19.3'

38.07'

Set drill hole in concrete wingwall

Set chiselled "X" in concrete wingwall



Section 7
T 18 N R 1 E
WISCONSIN

SURVEY CONTROL ORDER

Horizontal _____

Vertical _____

WISCONSIN COORDINATE SYSTEM

Corner	East (X)	North (Y)	Elevation (Z)	Zone
Control Sta. Name				

~~City/Village~~ Town of Byron
County of Monroe

I, William C. Jung, do hereby certify that on the seventh day of June 19 82, I found (no evidence) ~~no evidence~~ of the East $\frac{1}{4}$ corner of Section 7, T 18 N, R 1 E Fourth Principal Meridian, and I re-established said corner according to the Wisconsin Statutes as shown and described hereon.

Dated this 16th day of June 19 82.

William C. Jung - R. L. S. 1323

County Surveyors Office

Approved: **HARLEY A. SIME**
MONROE CO. SURVEYOR

History of corner establishment since Original Government Survey
Henry Schroeder was here in September of 1895 and set a 1" square bar, 2' long. Ray Hurlburt was here in October of 1940, and found a drift bolt and the point of a decayed wood stake. He then set a 1/2"x36" iron bar on the North side of the bolt. This corner was apparently destroyed when a new bridge was erected in 1956. In an October, 1969 survey, Fred Zietlow shows a 3/4" iron bar at this corner in the centerline of highway 173, 4' North of a bridge, 2659.14' North of the Section corner to the South.

Measured between the Southeast Section corner and the E1/16SE corner. Reset this corner on line with these corners and at the same distance North of the E1/16SE corner. I could not find Zietlow's point.

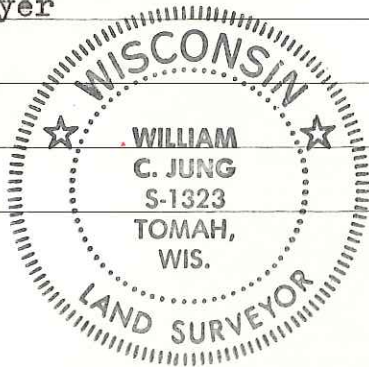
Description of corner and witness monuments, references and accessories used to perpetuate the original or re-established location of this corner:

William C. Jung

Witnesses to corner location:

William C. Jung

Bryan Meyer

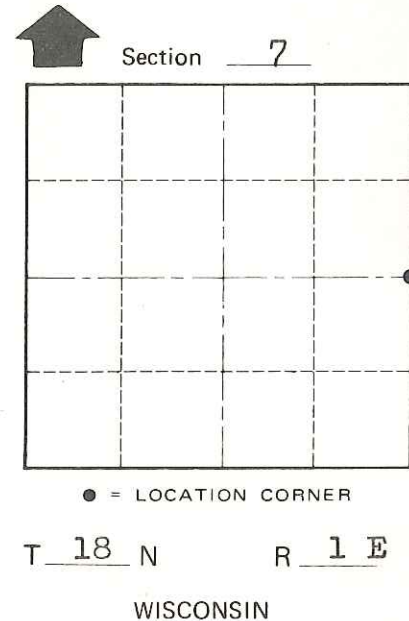
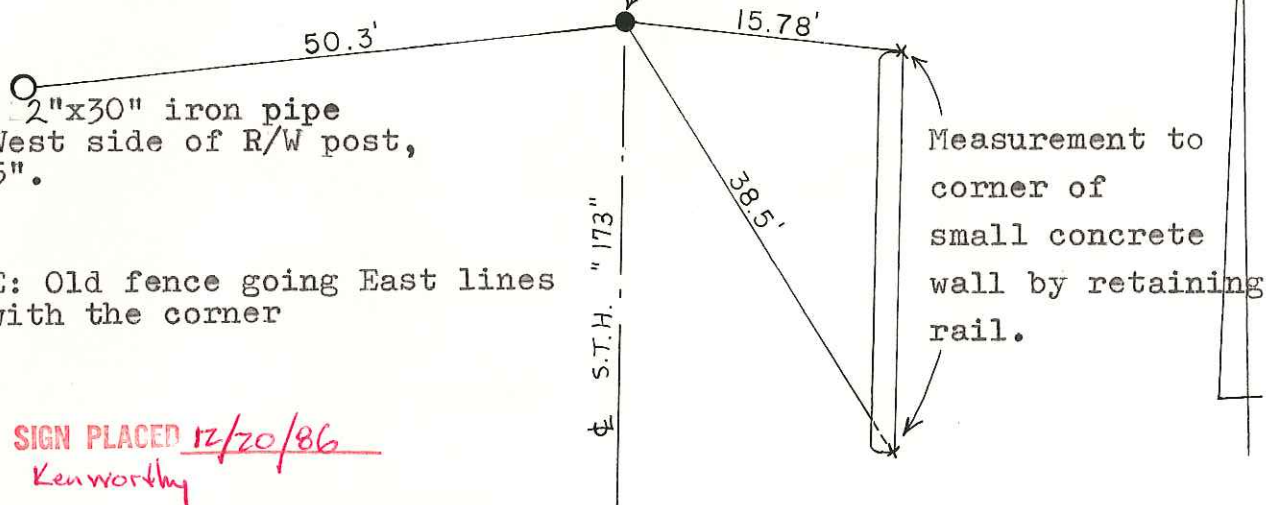


Set 2"x30" iron pipe on West side of R/W post, up 5".

NOTE: Old fence going East lines up with the corner

SIGN PLACED 12/20/86
Kenworthy

Set 1 1/4"x30" iron bar 4.3' North of concrete on bridge. Set N&C's 1' North and 1' West.



COUNTY SURVEYOR FORM NO. _____

SURVEY CONTROL ORDER

Horizontal _____

Vertical _____

WISCONSIN COORDINATE SYSTEM

Corner	East (X)	North (Y)	Elevation (Z)	Zone
Control Sta. Name				

~~City/Village of~~ Town of Byron
County of Monroe