

#52

**U.S. PUBLIC LAND CORNER
MAINTENANCE**

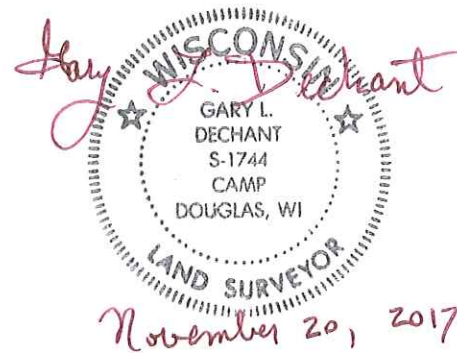
Corner ID : S1/4 Sec. 7, T18N-R1E

41801070020

<u>DATE</u>	<u>CREW</u>	<u>MONUMENT TYPE</u> -----
October 25, 2017	Zachariah P.Dechant Gary L. Dechant	Existing Harrison Monument intact, set new sign 1' south At remnants of down fence corner.

References:

	<u>Bearing</u>	<u>Distance</u>
1) Set 3/4"x24"round iron bar, down 4", 3' west of 5" White Pine	N22E	21.46'
2) Set 3/4"x24" round iron bar, down 4", 4' NW of 12" White Oak	S61E	15.93 '
3) Set 3/4"x24" round iron bar, down 4", 4' NE of 4" White Pine	S37W	16.68'
4) Set 3/4"x24" round iron bar, down 4", 3' SE of 3" Maple	N56W	23.00'



I, William C. Jung, do hereby certify that on the seventh day of June 1982, I found (evidence) ~~no evidence~~ of the North 1/4 corner of Section 18, T 18 N, R 1 E Fourth Principal Meridian, and I re-established said corner according to the Wisconsin Statutes as shown and described hereon.

Dated this 14th day of June 1982.

William C. Jung - R. L. S. 1323

County Surveyor's Office

Approved: **HARLEY A. SIME**
MONROE CO. SURVEYOR

COUNTY SURVEYOR FORM NO. 1

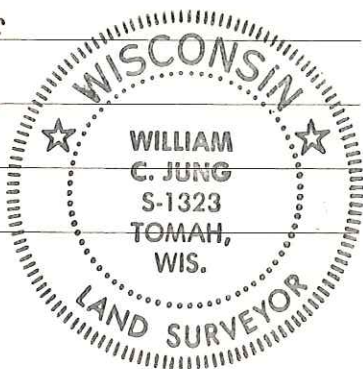
Description of corner and witness monuments, references and accessories used to perpetuate the original or re-established location of this corner:

William C. Jung

Witnesses to corner location:

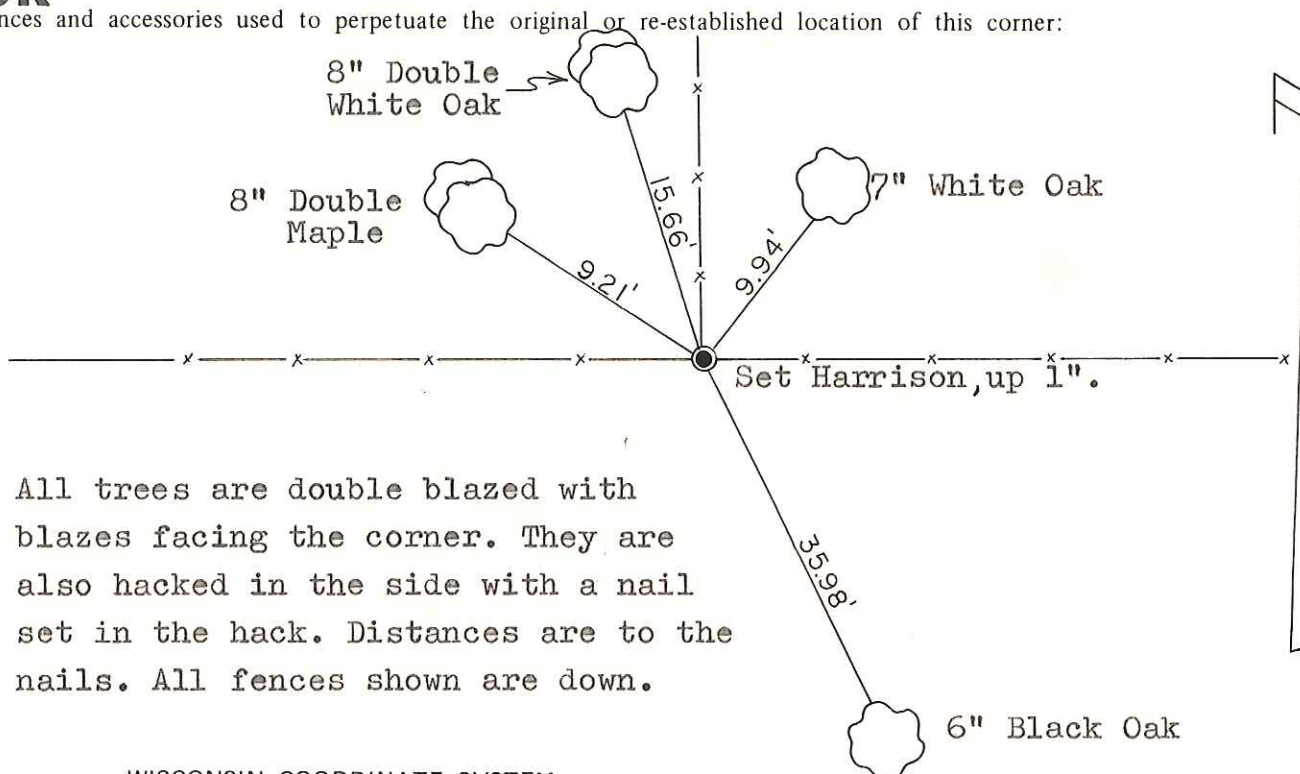
William Jung

Bryan Meyer



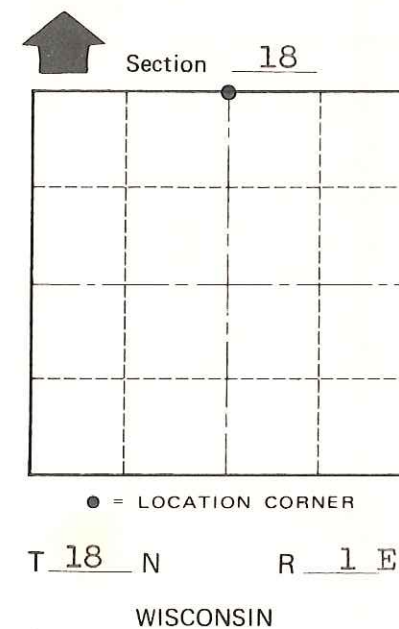
SURVEY CONTROL ORDER

Horizontal	_____
Vertical	_____



All trees are double blazed with blazes facing the corner. They are also hacked in the side with a nail set in the hack. Distances are to the nails. All fences shown are down.

See Reverse Side For Maintenance



WISCONSIN COORDINATE SYSTEM

Corner	East (X)	North (Y)	Elevation (Z)	Zone
Control Sta. Name				

~~City Village of~~ Town of Byron
 County of Monroe