

51

**U.S. PUBLIC LAND CORNER
MAINTENANCE**

Corner ID : SE Sec. 7, T18N-R1E

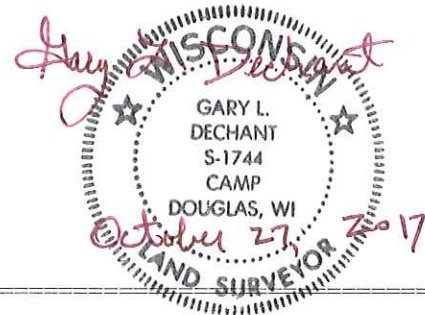
41801070000

<u>FIELD DATE</u>	<u>CREW</u>	<u>MONUMENT TYPE -----</u>
September 7, 2017	Zachariah P. Dechant Gary L. Dechant	Existing nail 2.5' west of center line STH "173"

References:

	<u>Bearing</u>	<u>Distance</u>
1) Set 3/4"x24" round iron bar south side of drive into sand mine	N48E	66.73'
2) Set 3/4"x24" round iron bar 15' south of Field road entrance	S54E	66.97'
3) Set 3/4"x24" round iron bar in center line of roadway	S48W	54.52'
4) Existing torque tube, set new sign 1' south	West	33.11' (33.2')
5) Set 3/4"x24" round iron bar, down 8"	N54W	49.89'

Nail and reference markers 1 & 3 and 2 & 5 set on straight lines.



I, William C. Jung, do hereby certify that on the 7th day of August 1981, I found (evidence) ~~(no evidence)~~ of the Northeast corner of Section 18, T18 N, R 1 E, Fourth Principal Meridian, and I re-established said corner according to the Wisconsin Statutes as shown and described hereon.

Dated this 28th day of August 1981.

William C. Jung

Registered Land Surveyor

Title

William C. Jung

Description of corner and witness monuments, references and accessories used to perpetuate the original or re-established location of this corner:

Witnesses to corner location:

Gary Dechant

Carlton Pietz



COUNTY SURVEYOR FORM NO. 1

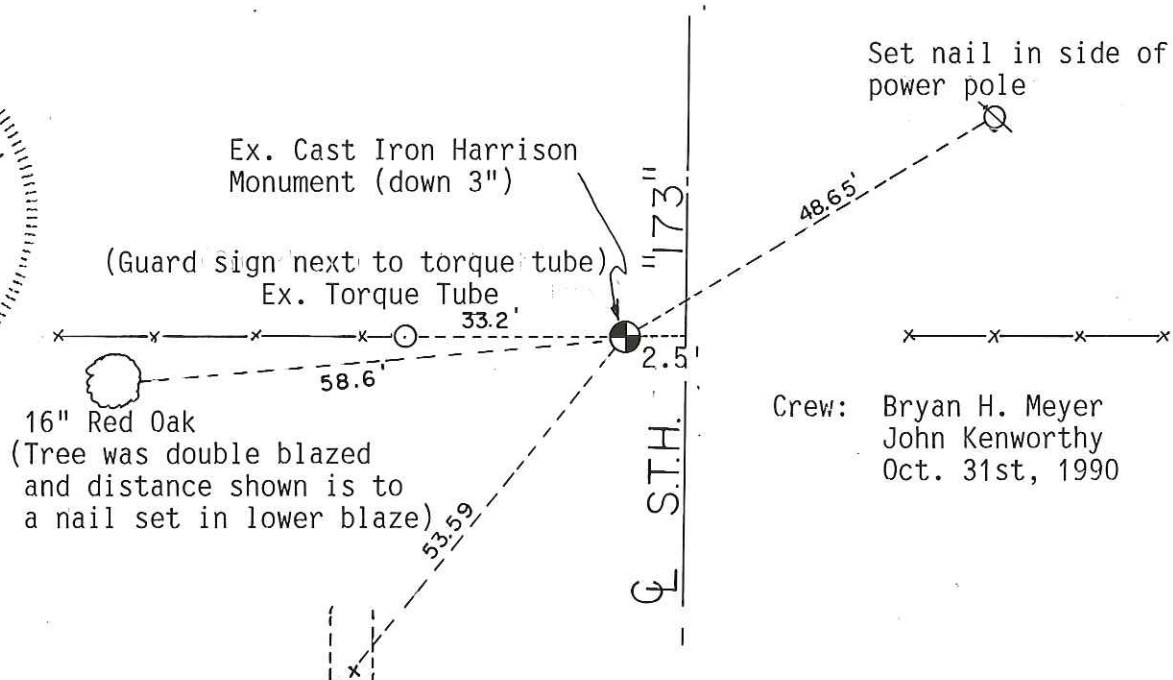
Approved: **HARLEY A. SIME**
MONROE CO. SURVEYOR

History of original corner establishment: In October of 1940, Ray Hurlburt set an Iron Pipe at the corner and set a torque tube 33 feet to the West. He found evidence of a previous corner where he set the iron pipe. The previous corner was probably set or found by a surveyor in September of 1895. Harley Sime found this corner again in about 1966. Fred Zietlow used this corner in October of 1969 and again in July of 1970. Pritzlaff used this corner in April of 1975.

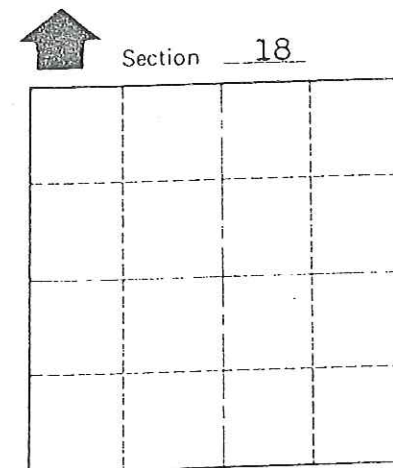
Description of corner evidence found:

Found bolt over iron pipe. Removed both and set a Harrison marker.

UPDATE : Found Cast Iron Harrison Monument (down 3") in pavement, obtained new ties as shown below.



See Reverse Side For Maintenance



O = LOCATION CORNER

T 18 N R 1 E

WISCONSIN

SURVEY CONTROL ORDER

Horizontal				
Vertical				
Corner	East (X)	North (Y)	Elevation (Z)	Zone
Control Sta. Name				

Set chiseled x on 1st full rib on S. end of culvert
WISCONSIN COORDINATE SYSTEM

City, Village or Town Byron
County of Monroe
Wisconsin

Crew: Bryan H. Meyer
John Kenworthy
Oct. 31st, 1990

CERTIFICATE

I, William C. Jung, do hereby certify that on the 7th day of August 19 81, I found (evidence) ~~(no evidence)~~ of the Northeast corner of Section 18, T 18 N, R 1 E, Fourth Principal Meridian, and I re-established said corner according to the Wisconsin Statutes as shown and described hereon.

Dated this 28th day of August 1981.

William C. Jung

Registered Land Surveyor
Title

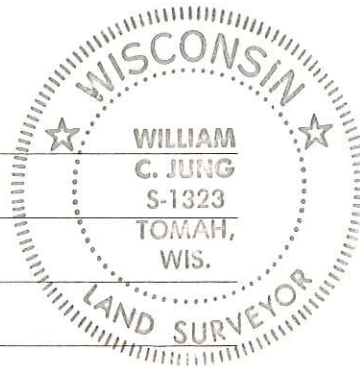
William C. Jung

Description of corner and witness monuments, references and accessories used to perpetuate the original or re-established location of this corner:

Witnesses to corner location:

Gary Dechant

Carlton Pietz



COUNTY SURVEYOR FORM NO. 1

Approved: **HARLEY A. SIME**
MONROE CO. SURVEYOR

SURVEY CONTROL ORDER

Horizontal	_____
Vertical	_____

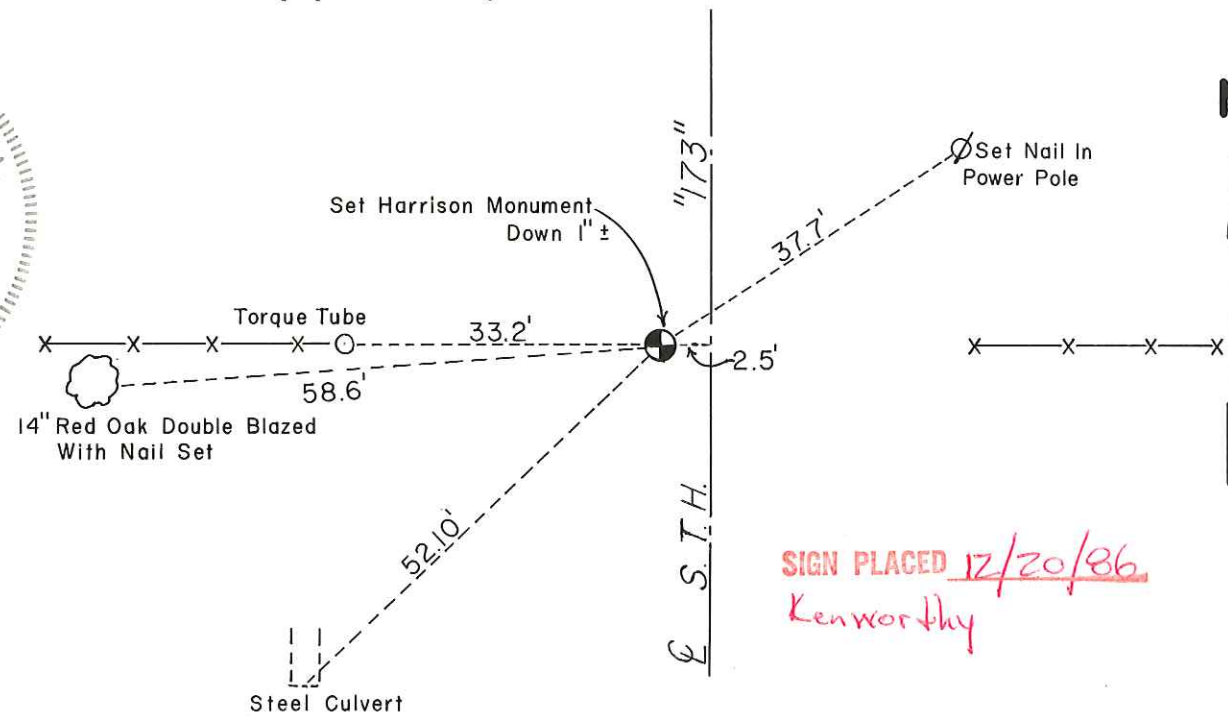
Corner	East (X)	North (Y)	Elevation (Z)	Zone
Control Sta. Name				

CERTIFIED LAND CORNER

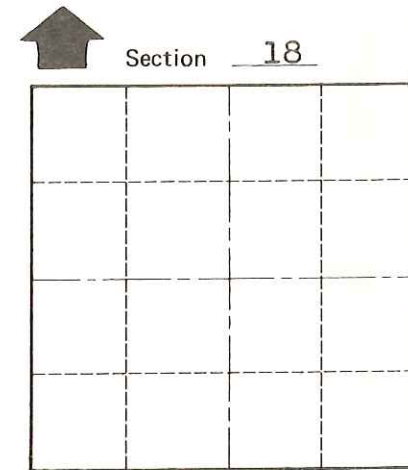
History of original corner establishment: In October of 1940, Ray Hurlburt set an Iron Pipe at the corner and set a torque tube 33 feet to the West. He found evidence of a previous corner where he set the iron pipe. The previous corner was probably set or found by a surveyor in September of 1895. Harley Sime found this corner again in about 1966. Fred Zietlow used this corner in October of 1969 and again in July of 1970. Pritzlaff used this corner in April of 1975.

Description of corner evidence found:

Found bolt over iron pipe. Removed both and set a Harrison marker.



See Reverse Side For Maintenance



O = LOCATION CORNER
T 18 N R 1 E
WISCONSIN

SIGN PLACED 12/20/86
Kenworthy

~~City, Village or~~ Town Byron
County of Monroe
Wisconsin

No. 51

See Pg. 3