

#32

**U.S. PUBLIC LAND CORNER  
MAINTENANCE**

**Corner ID : S1/4 Sec. 6, T18N-R1E**

**41801060020**

<u>DATE</u>	<u>CREW</u>	<u>MONUMENT TYPE</u> -----
July 28, 2017	Zachariah P.Dechant Gary L. Dechant	Corner destroyed, all ties destroyed, Reset from previous surveys 20 CSM 63 & 14CSM 3. Reset with 3/4"x24" hex iron bar down 8". Set Railroad spike over Hex iron bar. Center of "N" 158' east driveway 8054 CTH "N"

References:

	<u>Bearing</u>	<u>Distance</u>
1) Set 3/4"x4' round iron bar, down 6", 3'SW of 12" Black Oak	N36E	45.00'
2) Set 3/4"x4' round iron bar , down 6", 10' north center dike intersection	S23E	54.04'
3) Set 3/4"x24" round iron bar, down 6", 10' north of center of dike	S36W	55.89'
4) Set 3/4"x24" round iron bar, down 6",	N23W	41.58'
5) Existing 1" iron pipe and steel post	South	33.04'

**Harrison & reference markers set on straight lines.**



I, Garold A. Sime, do hereby certify that on the tenth day of July 1980, I found (evidence) ~~\_\_\_\_\_~~ of the North 1/4 corner of Section 7, T 18 N, R 1 E Fourth Principal Meridian, and I re-established said corner according to the Wisconsin Statutes as shown and described hereon.

Dated this 23rd day of Feb. 1981.

Garold A. Sime

Garold A. Sime - R.L.S. 1261  
Title

**History of corner establishment since Original Government Survey**

It would appear that Clark and Bergman were at this corner in July of 1954 when they made their survey for the Valley Corporation. Fred Zietlow set a 3/4" iron bar at this corner as occupied in October of 1969. Duane Marten used this iron bar in his surveys of November, 1972 and the Fall of 1974.

Description of corner evidence found:

Found the corner of record.

**See Reverse Side For Maintenance**

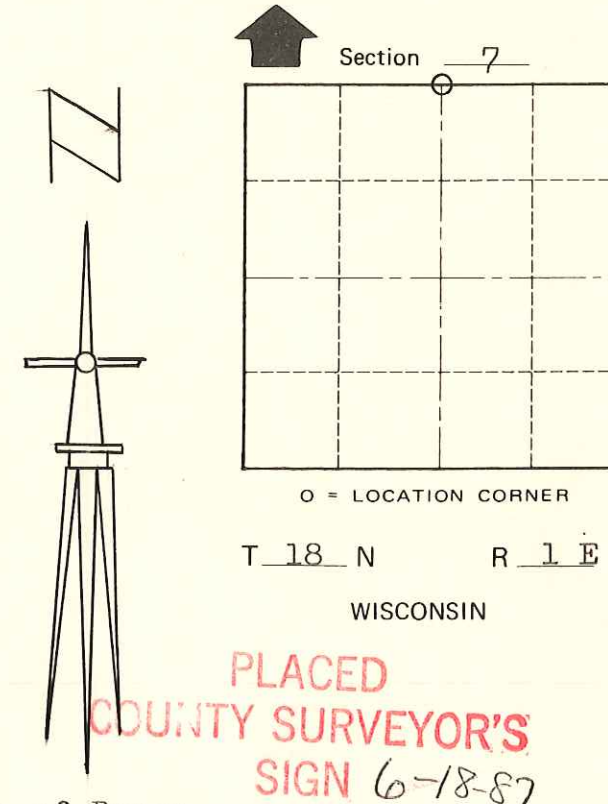
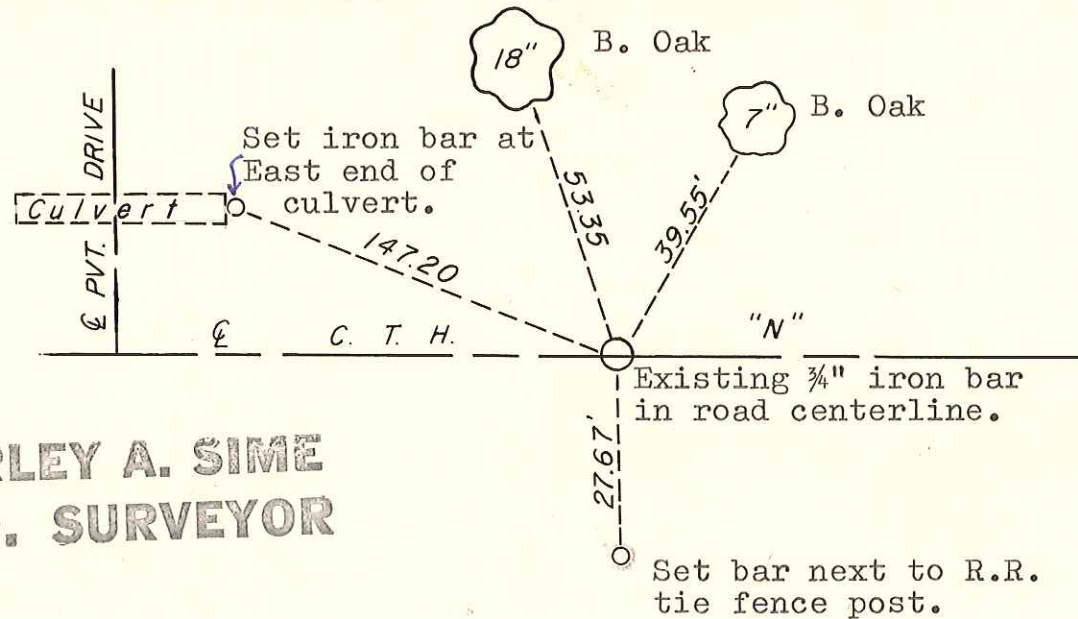
Description of corner and witness monuments, references and accessories used to perpetuate the original or re-established location of this corner:

Witnesses to corner location:

Gary Sime

Bryan Meyer

Scott Sowers



**Approved: HARLEY A. SIME  
MONROE CO. SURVEYOR**

**SURVEY CONTROL ORDER**

Horizontal	_____
Vertical	_____

**WISCONSIN COORDINATE SYSTEM**

Corner	East (X)	North (Y)	Elevation (Z)	Zone
Control Sta. Name				

~~\_\_\_\_\_~~ Town of Byron  
County of Monroe  
Wisconsin

COUNTY SURVEYOR FORM NO. 1