

#31

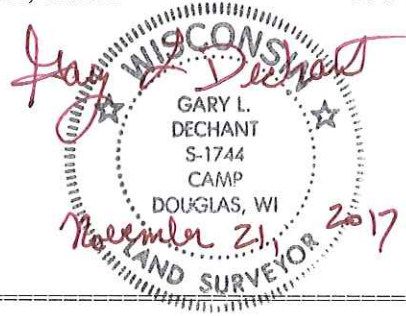
**U.S. PUBLIC LAND CORNER
MAINTENANCE**

**Corner ID : SE Sec. 6, T18N-R1E
41801060000**

<u>DATE</u>	<u>CREW</u>	<u>MONUMENT TYPE</u> -----
October 23, 2017	Zachariah P.Dechant Gary L. Dechant	Existing Torque Tube, down 12". Existing iron bolt reference marker 12.21' south under water. Set survey sign 1' south. Falls South of ditch, south side of dike near P.I.

References:

	<u>Bearing</u>	<u>Distance</u>
1) Set 3/4"x24" hexagon iron bar center of dike, down 8"	East	47.78'
2) Set 3/4"x24" iron pipe, 5' north of 18" Black Oak	S9W	41.58'
3) Set 3/4"x24" iron pipe, 4' NE of 15" Black Oak (BT)	S61W	37.90'
4) Set 3/4"x24" hexagon iron bar in center of dike, down 8"	N23W	39.36'



I, William C. Jung, do hereby certify that on the seventh day of June 1982, I found (evidence) ~~(no evidence)~~ of the Northeast corner of Section 7, T 18 N, R 1 E Fourth Principal Meridian, and I re-established said corner according to the Wisconsin Statutes as shown and described hereon.

Dated this 16th day of June 1982.

William C. Jung - R. L. S. 1323

History of corner establishment since Original Government Survey

Henry Schroeder was here in September of 1895 and set a 3/4" round iron, 2.64' long and a sandstone 1' long and 8" wide. Ray Hurlburt was here in October of 1940 and found Schroeder's stone and the point of a decayed stake. He then set an auto torque tube on the East side of the stone, up 1'. In July of 1954, Bergman shows an existing auto torque tube. In October of 1969, Fred Zietlow found Hurlburt's monument. In April, 1975, Pritzlaff used this torque tube in a survey of Section 8.

Found Hurlburt's torque tube, up 1' and accepted it as the corner.

County Surveyor's Office

Approved: HARLEY A. SIME
MONROE CO. SURVEYOR

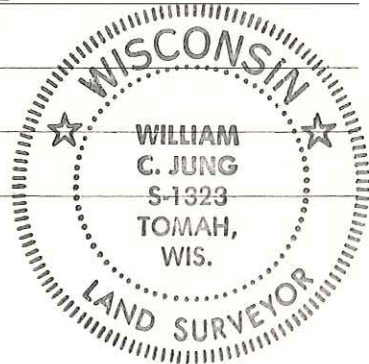
Description of corner and witness monuments, references and accessories used to perpetuate the original or re-established location of this corner:

William C. Jung

Witnesses to corner location:

William C. Jung

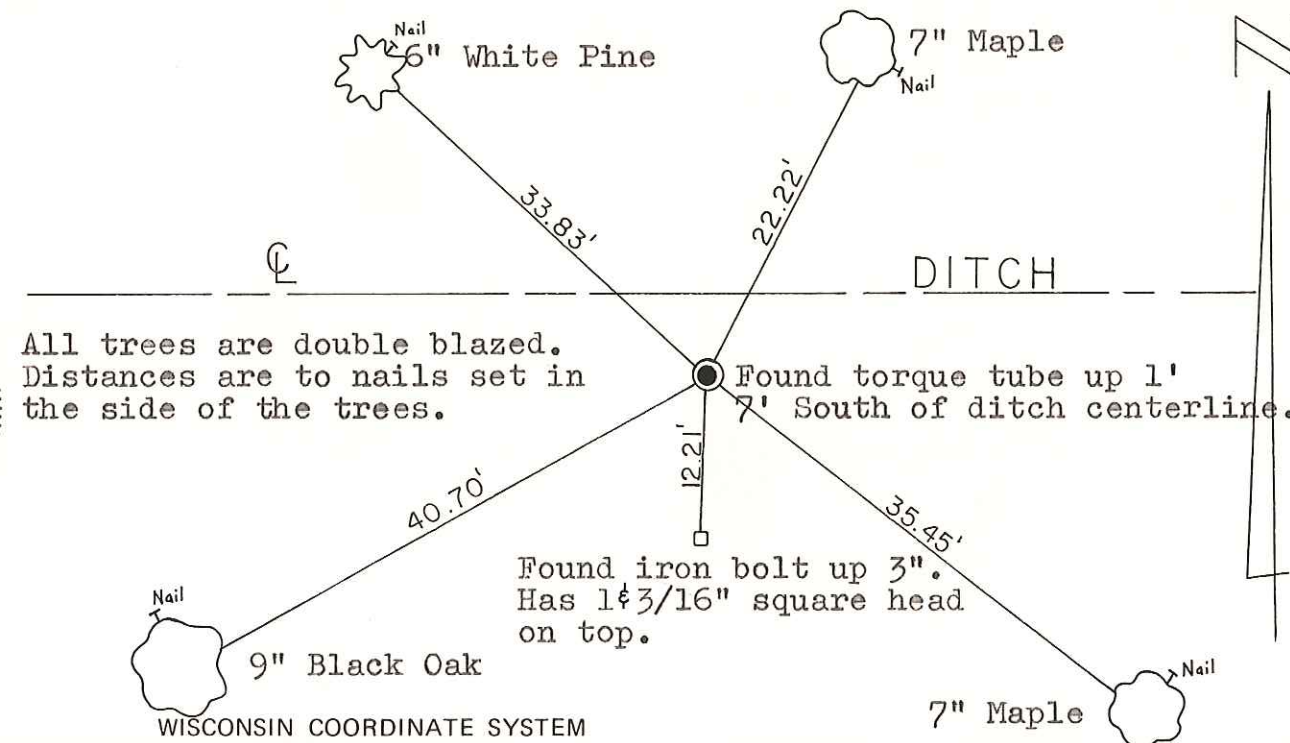
Bryan Meyer



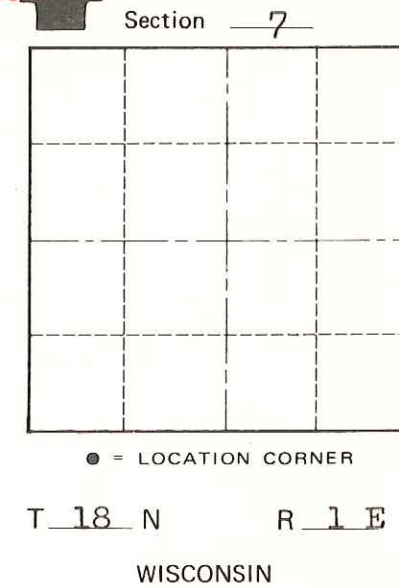
SURVEY CONTROL ORDER

Horizontal	_____
Vertical	_____

Corner	East (X)	North (Y)	Elevation (Z)	Zone
Control Sta. Name				



See Reverse Side For Maintenance



~~City Village of~~ Town of Byron

County of Monroe

COUNTY SURVEYOR FORM NO. 1