

30

**U.S. PUBLIC LAND CORNER
MAINTENANCE**

Corner ID : S1/4 Sec. 5, T18N-R1E

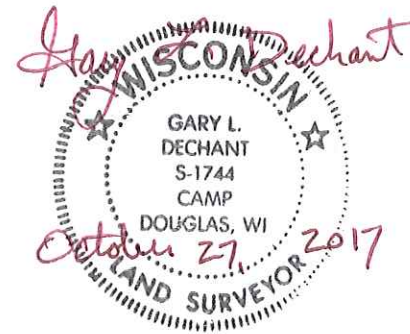
41801050020

<u>FIELD DATE</u>	<u>CREW</u>	<u>MONUMENT TYPE -----</u>
September 7, 2017	Zachariah P.Dechant Gary L. Dechant	Found nail and replaced with railroad spike over 3/4"x24" hexagon iron bar, 2' north of center line Dove Ave

References:

	<u>Bearing</u>	<u>Distance</u>
1) Set 3/4"x24" round iron bar, down 8", SW corner of concrete housing for irrigation	N21E	84.31'
2) Existing 3/4" round iron bar, down 12" on line with ditch to east	N84E	87.53' (87.46')
3) Set 3/4"x24" round iron bar 20' east of drive, down 8"	S42E	62.29'
4) Set 3/4"x24" round iron bar, 3.5' north of woven wire fence, down 6"	S21W	38.00'

**Railroad spike and reference markers 1& 4
set on straight lines.**



I, Harley A. Sime, do hereby certify that on the 4th day of June 1980, I found (evidence) ~~(no evidence)~~ of the N $\frac{1}{4}$ corner of Section 8, T 18 N, R 1 E Fourth Principal Meridian, and I re-established said corner according to the Wisconsin Statutes as shown and described hereon.

Dated this 26th day of Feb. 1981.

Harley A. Sime, R.L.S. 355

County Surveyor
Title

History of corner establishment since Original Government Survey
Schroeder (?) was at this corner in September of 1895. Bergman set an angle iron at this corner in July of 1954. Pritzlaff set a R.R. spike at the occupied corner in April of 1975.

Description of corner evidence found:

Found a R.R. spike used in previous survey work. Removed the R.R. spike and replaced it with a 1 $\frac{1}{4}$ " iron bar. This location fits Bergman's distance back to the N.W. corner of Section 8 and also falls in the road as is shown on Bergman's map.

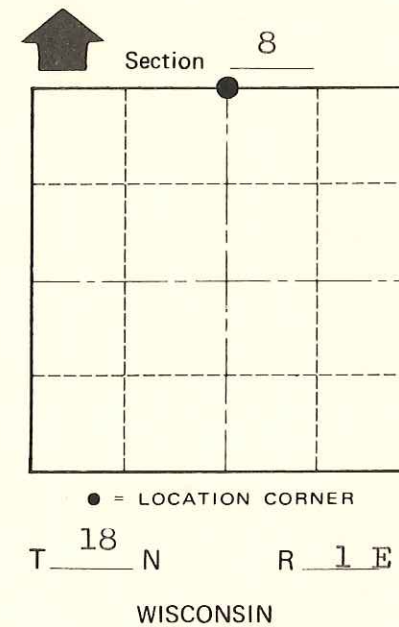
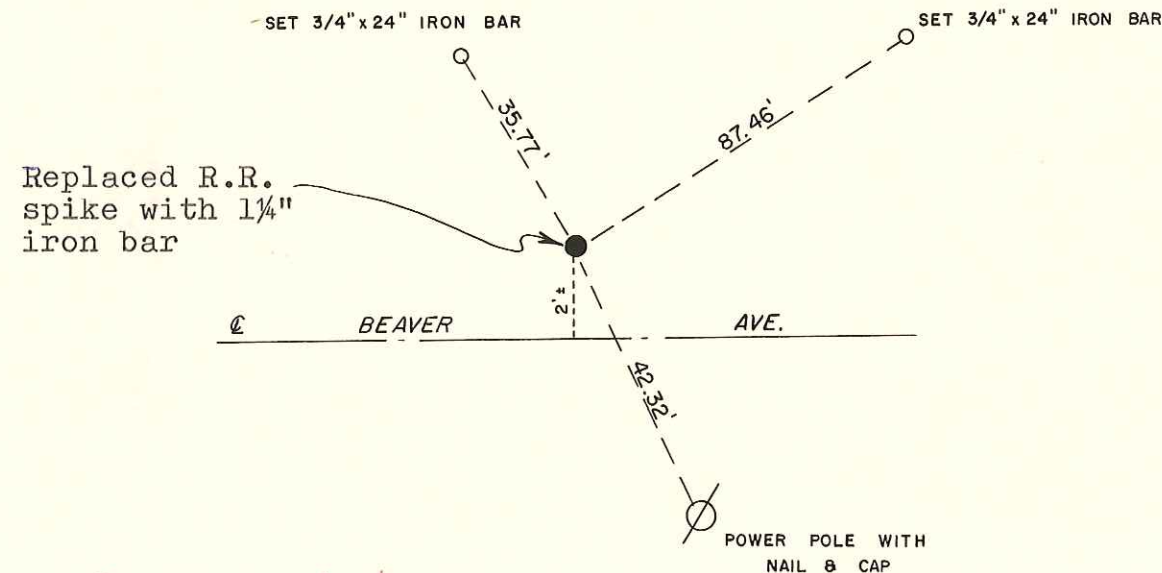
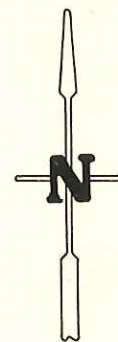
See Reverse Side For Maintenance

COUNTY SURVEYOR FORM NO. 1

Description of corner and witness monuments, references and accessories used to perpetuate the original or re-established location of this corner:

Witnesses to corner location:

M. Scott Sowers
T. Tormoen
C. Dade



**Approved: HARLEY A. SIME
MONROE CO. SURVEYOR**

SURVEY CONTROL ORDER

Horizontal	_____
Vertical	_____

WISCONSIN COORDINATE SYSTEM

Corner	East (X)	North (Y)	Elevation (Z)	Zone
Control Sta. Name				

*SIGN PLACED 12/22/86
Kenworthy*

~~City, Village or~~ Town Byron
County of Monroe